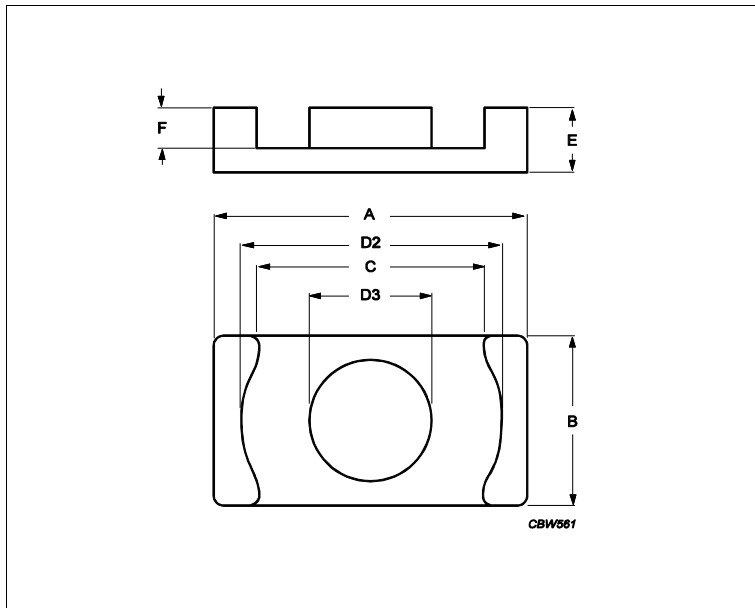
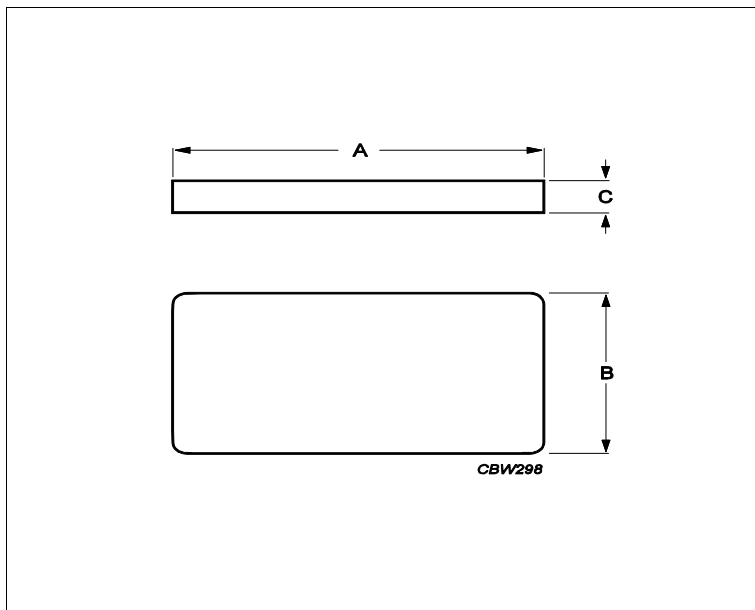


## Core **EQ13 + PLT13/9/1**



| Effective parameters |                  |       |                  |
|----------------------|------------------|-------|------------------|
|                      | Parameter        | Value | Unit             |
| $\Sigma(I/A)$        | core factor (C1) | 0.803 | mm <sup>-1</sup> |
| <b>Ve</b>            | effective volume | 315   | mm <sup>3</sup>  |
| <b>Le</b>            | effective length | 15.9  | mm               |
| <b>Ae</b>            | effective area   | 19.8  | mm <sup>2</sup>  |
| <b>Amin</b>          | minimum area     | 19.2  | mm <sup>2</sup>  |
| <b>m</b>             | EQ13             | ≈ 0.8 | g/pcs            |
| <b>m</b>             | PLT13/9/1        | ≈ 0.6 | g/pcs            |



| Dimensions for product: EQ13      |       |       |       |       |       |      |
|-----------------------------------|-------|-------|-------|-------|-------|------|
|                                   | Nom   | Tol + | Tol - | Max   | Min   | Unit |
| <b>A</b>                          | 12.80 | 0.30  | 0.30  | 13.10 | 12.50 | mm   |
| <b>B</b>                          | 8.70  | 0.25  | 0.25  | 8.95  | 8.45  | mm   |
| <b>C</b>                          | 9.05  | 0.30  | 0.30  | 9.35  | 8.75  | mm   |
| <b>D2</b>                         | 11.20 | 0.30  | 0.30  | 11.50 | 10.90 | mm   |
| <b>D3</b>                         | 5.00  | 0.15  | 0.15  | 5.15  | 4.85  | mm   |
| <b>E</b>                          | 2.85  | 0.08  | 0.08  | 2.93  | 2.78  | mm   |
| <b>F</b>                          | 1.75  | 0.13  | 0.13  | 1.88  | 1.63  | mm   |
| Dimensions for product: PLT13/9/1 |       |       |       |       |       |      |
|                                   | Nom   | Tol + | Tol - | Max   | Min   | Unit |
| <b>A</b>                          | 12.80 | 0.30  | 0.30  | 13.10 | 12.50 | mm   |

## Core **EQ13 + PLT13/9/1**

| Dimensions for product: PLT13/9/1 |      |       |       |      |      |      |
|-----------------------------------|------|-------|-------|------|------|------|
|                                   | Nom  | Tol + | Tol - | Max  | Min  | Unit |
| <b>B</b>                          | 8.70 | 0.25  | 0.25  | 8.95 | 8.45 | mm   |
| <b>C</b>                          | 1.10 | 0.10  | 0.10  | 1.20 | 1.00 | mm   |

| Inductance factor |       |       |       |                       |  |
|-------------------|-------|-------|-------|-----------------------|--|
| Material          | Value | Tol + | Tol - | Unit                  |  |
| 3C95              | 2000  | 25%   | 25%   | nH/turns <sup>2</sup> |  |
| 3C96              | 1600  | 25%   | 25%   | nH/turns <sup>2</sup> |  |
| 3F36              | 1400  | 25%   | 25%   | nH/turns <sup>2</sup> |  |
| 3F46              | 950   | 25%   | 25%   | nH/turns <sup>2</sup> |  |

| Power loss: 3C95     |        |        |       |       |
|----------------------|--------|--------|-------|-------|
| Measuring conditions |        |        | Max   | Unit  |
| 100 kHz              | 200 mT | 100 °C | 0.150 | W/set |
| 100 kHz              | 200 mT | 25 °C  | 0.160 | W/set |

| Power loss: 3C96     |        |        |       |       |
|----------------------|--------|--------|-------|-------|
| Measuring conditions |        |        | Max   | Unit  |
| 100 kHz              | 200 mT | 100 °C | 0.140 | W/set |
| 400 kHz              | 50 mT  | 100 °C | 0.057 | W/set |

| Power loss: 3F36     |        |        |       |       |
|----------------------|--------|--------|-------|-------|
| Measuring conditions |        |        | Max   | Unit  |
| 500 kHz              | 50 mT  | 100 °C | 0.047 | W/set |
| 500 kHz              | 100 mT | 100 °C | 0.360 | W/set |

| Power loss: 3F46     |       |        |       |       |
|----------------------|-------|--------|-------|-------|
| Measuring conditions |       |        | Max   | Unit  |
| 1000 kHz             | 50 mT | 100 °C | 0.130 | W/set |
| 3000 kHz             | 10 mT | 100 °C | 0.031 | W/set |

| Bsat                 |         |        |          |     |      |
|----------------------|---------|--------|----------|-----|------|
| Measuring conditions |         |        | Material | Min | Unit |
| 25 kHz               | 250 A/m | 100 °C | 3C95     | 330 | mT   |
| 25 kHz               | 250 A/m | 100 °C | 3C96     | 340 | mT   |
| 25 kHz               | 250 A/m | 100 °C | 3F36     | 340 | mT   |
| 25 kHz               | 250 A/m | 100 °C | 3F46     | 330 | mT   |

## X-ON Electronics

Largest Supplier of Electrical and Electronic Components

*Click to view similar products for [Ferrite Cores & Accessories](#) category:*

*Click to view products by [Ferrotec](#) manufacturer:*

Other Similar products are found below :

[B65512C0000T001](#) [B65522B0000T001](#) [B65549E4X23](#) [B65615B0001X000](#) [B65659F0001X023](#) [B65659F0003X023](#) [B65659F4X23](#)  
[B65665C0004X000](#) [B65679E3X22](#) [B65705B0003X000](#) [B65804C2005X000](#) [B65812B3003X22](#) [B65814B2005X000](#) [B65840B1006D001](#)  
[B65840B1006D002](#) [B65878E0012D001](#) [B66206A2001X000](#) [B66206J1106T1](#) [B66208K1009T1](#) [B66252BM1](#) [B66288F2204X000](#)  
[B66306C1010T2](#) [B66341G0000X127](#) [B66390A1016T001](#) [B67348A1X27](#) [B65512C2001X000](#) [B65518D2001X000](#) [B65535B0003X000](#)  
[B65539C1003X1](#) [B65542A5000X](#) [B65655B0009X000](#) [B65687A1000T001](#) [B65714K1020T001](#) [B65734B1000T001](#) [B65734B1000T1](#)  
[B65804B6010T1](#) [B65814N1008D002](#) [B65816N1011D1](#) [B65820D2005X](#) [B65822F1008T001](#) [B65844W1010D001](#) [B65848D1010D1](#)  
[B65848S2000X](#) [B65884E0012D001](#) [B65887H4300X041](#) [B66202A2010X000](#) [B66202B1106T001](#) [B66206B1110T001](#) [B66208K1009T001](#)  
[B66208X1010T001](#)