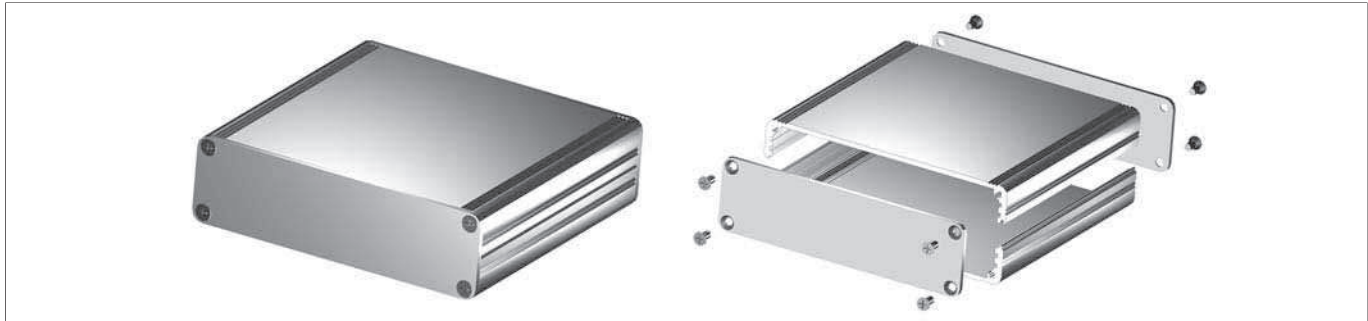


A

Miniature aluminium casing for eurocards

B

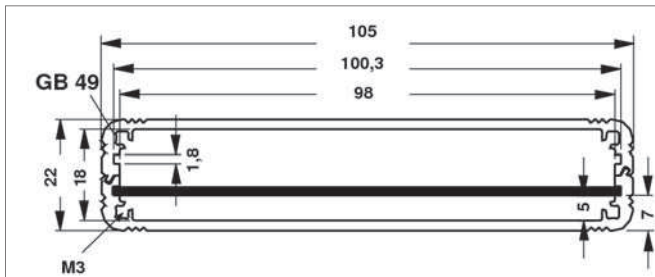
C



D

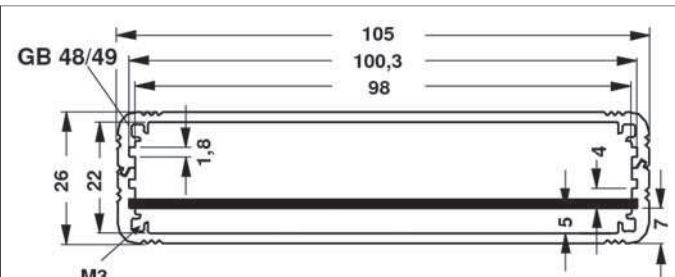
- combination case with internal guide rails for application of 100 mm Eurocards
- casing tube made of aluminium sections which are slotted into each other and screwed together
- mit **M 3** fixing threads for cover panels; further dimensions and surface treatments upon request
- supplied as kit, incl. 2 mm cover panels and mounting material

E



art. no.

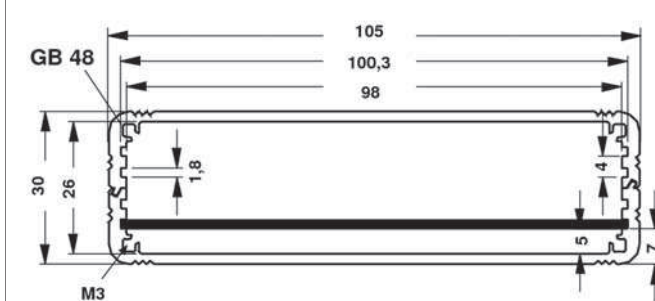
AKG 105 22 ...



art. no.

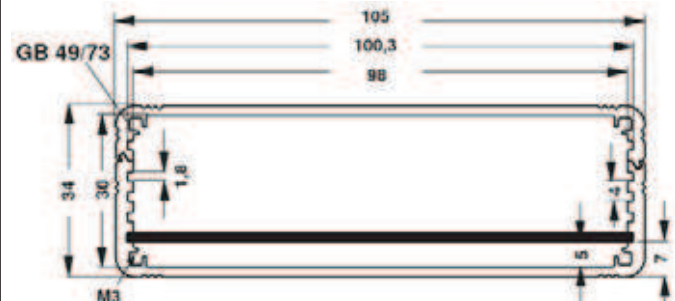
AKG 105 26 ...

G



art. no.

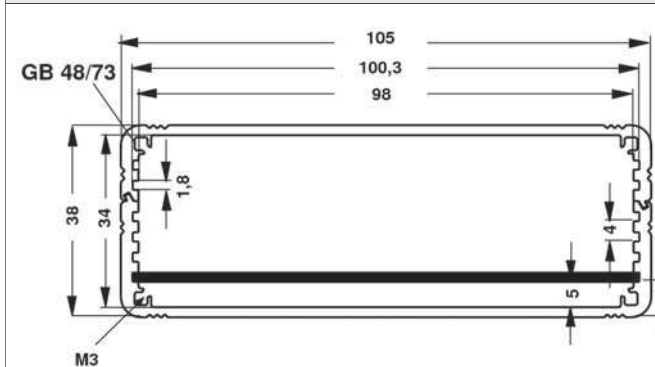
AKG 105 30 ...



art. no.

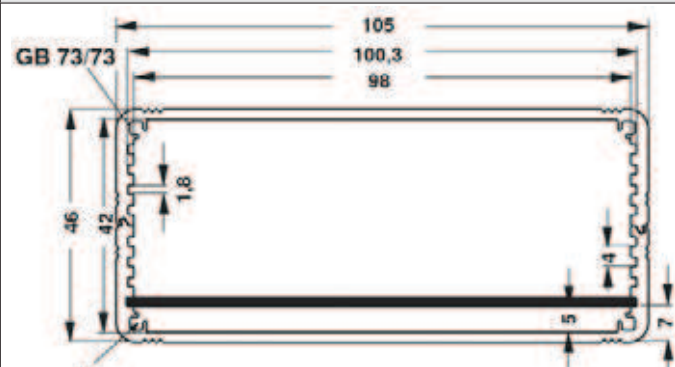
AKG 105 34 ...

I



art. no.

AKG 105 38 ...



art. no.

AKG 105 46 ...

K

M

please indicate:

... lengths

80 100 120 160 200 220 mm

... surface

SA = black anodised

ME = clear anodised

N

M 27

Shell cases
Extruded assembled cases
Desk consoles
Euro case

→ M 3 - 4
→ M 5
→ M 8
→ M 9

Tube cases with Eurocards
Case with cooling fins
Design case Chac
Design case Frame

→ M 23
→ M 34
→ M 38
→ M 39

profiles in meter lengths 1000 mm → M 30

X-ON Electronics

Largest Supplier of Electrical and Electronic Components

Click to view similar products for [Enclosures, Boxes & Cases](#) category:

Click to view products by [Fisher](#) manufacturer:

Other Similar products are found below :

[585-R-WH-PK](#) [M-10-PLATED](#) [60566-01-000](#) [HPL-9VB BATT DOOR](#) [M18-PLTD](#) [M-21-PLATED](#) [63310-01-000](#) [6711GSKT](#)
[71884-29-028](#) [LH45-100 Black](#) [72868-510-000](#) [CNS-0000 Black](#) [72883-510-000](#) [CNS-0101 Black](#) [72906-510-000](#) [CNS-0407 Black](#) [73092-](#)
[510-000](#) [CNM-0101 Black](#) [73105-510-000](#) [CNL-0101 Black](#) [73395-510-039](#) [CNS-0006 Bone](#) [74016-510-000](#) [CNL-0006 Black](#) [74257-510-000](#)
[CNL-0004](#) [MDC-1183-PLAIN-ALUM](#) [MDC-1183-PTD](#) [MDC-13104-PTD](#) [MDC-321-PTD](#) [MDC-973-PTD](#) [76](#) [77153-01-028](#) [FLX6030](#)
[83535-01-508](#) [90026-501-000](#) [PS36-200](#) [116-508](#) [120-407](#) [120-910](#) [127-908](#) [130-008](#) [1301170079](#) [1322GSKTEP](#) [1325GSKT3](#) [138-PLAIN](#)
[1434-1210](#) [EAS-500 \(BLACK ANO\)](#) [1804RP-RB-PK](#) [190-005](#) [2202307](#) [KAB3321 BLACK](#) [KAB3421](#) [2697466](#) [S52213](#) [2901123](#) [2901699](#)
[A0645271](#) [A20P20](#) [2106-IR](#) [PERF-850-PLN](#)