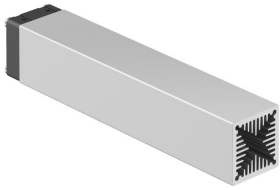


Data sheet Product LAM 3 125 5



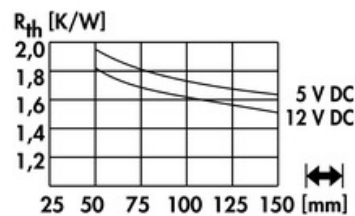
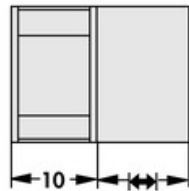
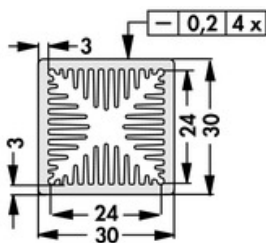
Cooling aggregates > Miniature cooling aggregates
30 x 30 mm, with axial fan

- compact design
- homogeneous heat dissipation
- mounting possible on any side
- powerful axial-fan motor
- other lengths, special designs and processing according to customer's requirements
- other surfaces treatment, fan types and fan voltages on request

Features

width:	30 mm
height:	30 mm
length:	125 mm
thermal resistance:	1.94 - 1.52 K/W
operating voltage of the fan motor:	<ul style="list-style-type: none"> • 5 V DC • 12 V DC
surface:	natural colour anodised

Technical Drawing



Fan**Kugellagert, 5 V DC**

type:	Sepa, ball bearing
dimensions:	30x30x10 mm
tension:	5 V DC
max. air volume:	6.8 m ³ /h
cur. consumpt.:	130 mA
temperature range:	-10°C... +70°C
speed:	8,500 min ⁻¹
noise level:	21 dB(A)
weight:	8 g
failure rate (L ₁₀):	L ₁₀ < 95,000 h (20°C) MTBF < 280,000 h (20°C)

Kugellagert, 12 V DC

type:	Sepa, ball bearing
dimensions:	30x30x10 mm
tension:	12 V DC
max. air volume:	7.7 m ³ /h
cur. consumpt.:	60 mA
temperature range:	-10°C ... +85°C
speed:	9,100 min ⁻¹
noise level:	27 dB(A)
weight:	8 g
failure rate (L ₁₀):	L ₁₀ > 100,000 h (20°C) MTBF > 400,000 h (20°C)

X-ON Electronics

Largest Supplier of Electrical and Electronic Components

Click to view similar products for [Heat Sinks](#) category:

Click to view products by [Fisher](#) manufacturer:

Other Similar products are found below :

[581102B00000G](#) [656-15ABPE](#) [657-20ABPNE](#) [7020B-TC12-MTG](#) [73452PPBA](#) [7G0011A](#) [PF720G](#) [A22-4026](#) [120-1873-007](#) [HAH10L](#)
[1542616-1](#) [218-40CTE3](#) [25-7520](#) [231-75PAB-13V](#) [231-75PAB-15V](#) [253-122ABE-22](#) [PSC22CB](#) [CLP212SG](#) [HAF10L](#) [HAQ10T](#) [D10100-](#)
[28](#) [BDN183CBA01](#) [3-21053-4](#) [32438](#) [TX0506-1B](#) [TX1806B](#) [LAE66A3CB](#) [WA-DT2-101E](#) [511-3U](#) [73381PPBA](#) [73403PPBA](#) [7G0047C](#)
[COMX-440-HSP](#) [510-12M](#) [D10650-40T5](#) [V8511 Y](#) [APF40-40-13CB/A01](#) [780653U04500G](#) [ATS-54310K-C2-R0](#) [FK 216 CB SA](#) [648-51AB](#)
[657-20ABPESC](#) [2341BG](#) [679-25AG](#) [FK 212 CB SA](#) [FK225 SA L1](#) [680-5K](#) [7106DG/TR](#) [7109DG/TR](#) [S14K35G3S5](#)