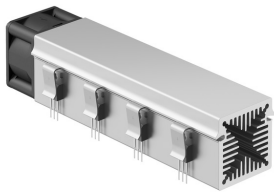


Data sheet Product LAM 4 K 100 12

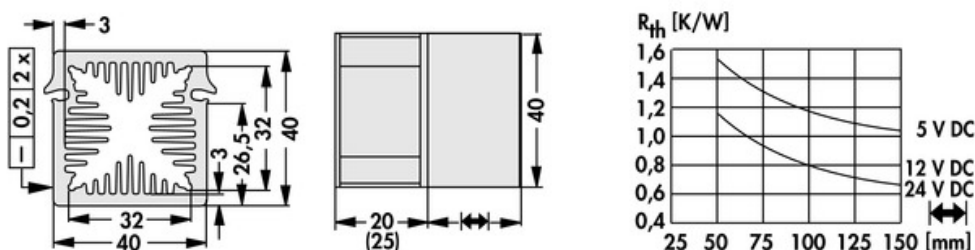
Cooling aggregates>Miniature cooling aggregates
40 x 40 mm, with axial fan, integrated clamp



Features

| | |
|-------------------------------------|--|
| width: | 40 mm |
| height: | 40 mm |
| length: | 100 mm |
| thermal resistance: | 1.15 - 0.65 K/W |
| operating voltage of the fan motor: | <ul style="list-style-type: none"> • 5 V DC • 12 V DC • 24 V DC |
| surface: | natural colour anodised |

Technical Drawing



Fan

ebmpapst 405, 5 V DC

| | |
|----------------------------------|--|
| type: | ebmpapst 405 |
| dimensions: | 40x40x20 mm |
| tension: | 5 V DC |
| power inout: | 0.9 W |
| max. air volume: | 10 m ³ /h |
| temperature range: | -20°C... +70°C |
| speed: | 6,000 min ⁻¹ |
| noise level: | 18 dB(A) |
| weight: | 27 g |
| failure rate (L ₁₀): | L ₁₀ < 50,000 h (40°C) L ₁₀ < 20,000 h (tmax) |

ebmpapst 412 JHH, 12 V DC

| | |
|----------------------------------|--|
| type: | ebmpapst 412 JHH |
| dimensions: | 40x40x25 mm |
| tension: | 12 V DC |
| power inout: | 3.3 W |
| max. air volume: | 24 m ³ /h |
| temperature range: | -20°C... +60°C |
| speed: | 13,000 min ⁻¹ |
| noise level: | 46 dB(A) |
| weight: | 50 g |
| failure rate (L ₁₀): | L ₁₀ < 57,500 h (40°C) L ₁₀ < 35,000 h (tmax) |

ebmpapst 414 JHH, 24 V DC

| | |
|--------------|------------------|
| type: | ebmpapst 414 JHH |
| dimensions: | 40x40x25 mm |
| tension: | 24 V DC |
| power inout: | 3.6 W |

| | |
|----------------------------------|--|
| max. air volume: | 24 m³/h |
| temperature range: | -20°C... +60°C |
| speed: | 13,000 min⁻¹ |
| noise level: | 46 dB(A) |
| weight: | 50 g |
| failure rate (L ₁₀): | L₁₀ < 57,500 h (40°C) L₁₀ < 35,000 h (tmax) |

Fischer Elektronik GmbH & Co. KG
DEUTSCHLAND • GERMANY • ALLEMAGNE

Nottebohmstraße 28
58511 Lüdenscheid

Telefon +49 2351 435-0
Telefax +49 2351 45754

info@fischerelektronik.de
www.fischerelektronik.de

X-ON Electronics

Largest Supplier of Electrical and Electronic Components

Click to view similar products for [Heat Sinks](#) category:

Click to view products by [Fisher](#) manufacturer:

Other Similar products are found below :

[581102B00000G](#) [656-15ABPE](#) [657-20ABPNE](#) [7020B-TC12-MTG](#) [73452PPBA](#) [7G0011A](#) [PF720G](#) [A22-4026](#) [120-1873-007](#) [HAH10L](#)
[1542616-1](#) [218-40CTE3](#) [25-7520](#) [231-75PAB-13V](#) [231-75PAB-15V](#) [253-122ABE-22](#) [PSC22CB](#) [CLP212SG](#) [HAF10L](#) [HAQ10T](#) [D10100-](#)
[28](#) [BDN183CBA01](#) [3-21053-4](#) [32438](#) [TX0506-1B](#) [TX1806B](#) [LAE66A3CB](#) [WA-DT2-101E](#) [511-3U](#) [73381PPBA](#) [73403PPBA](#) [7G0047C](#)
[COMX-440-HSP](#) [510-12M](#) [D10650-40T5](#) [V8511 Y](#) [APF40-40-13CB/A01](#) [780653U04500G](#) [ATS-54310K-C2-R0](#) [FK 216 CB SA](#) [648-51AB](#)
[657-20ABPESC](#) [2341BG](#) [679-25AG](#) [FK 212 CB SA](#) [FK225 SA L1](#) [680-5K](#) [7106DG/TR](#) [7109DG/TR](#) [S14K35G3S5](#)