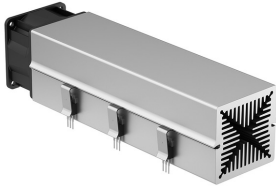


Data sheet Product LAM 6 K 150 12



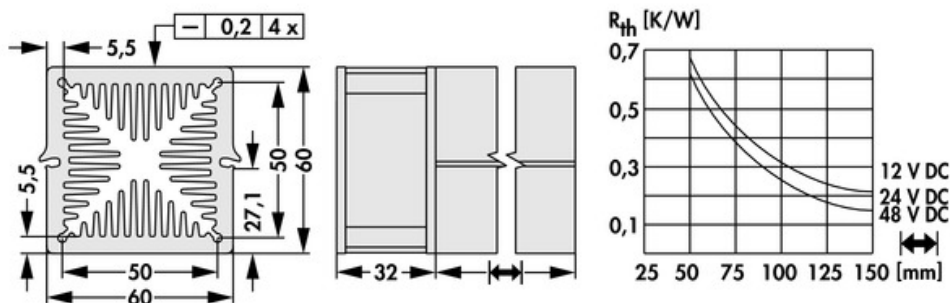
Cooling aggregates > Miniature cooling aggregates
60 x 60 mm, with axial fan, integrated clamp

- compact design
- homogeneous heat distribution
- mounting possible on any side
- powerful axial-fan motor
- other lengths, special designs and machinings according to customer's specifications
- other surfaces, fan types and fan voltages upon request

Features

width:	60 mm
height:	60 mm
length:	150 mm
thermal resistance:	0.67 - 0.15 K/W
surface:	natural colour anodised

Technical Drawing



Fan

ebmpapst 612 JH, 12 V DC

type:	ebmpapst 612 JH
dimensions:	60x60x32 mm
tension:	12 V DC
power inout:	7.7 W
max. air volume:	70 m ³ /h
temperature range:	-20°C... +70°C
speed:	11,700 min ⁻¹
noise level:	53 dB(A)
weight:	100 g
failure rate (L ₁₀):	L ₁₀ < 57,500 h (40°C)

ebmpapst 614 J/2HHP, 24 V DC

type:	ebmpapst 614 J/2HHP
dimensions:	60x60x32 mm
tension:	24 V DC
power inout:	14.6 W
max. air volume:	82 m ³ /h
temperature range:	-20°C... 75°C
speed:	15,000 min ⁻¹
noise level:	62 dB(A)
weight:	100 g
failure rate (L ₁₀):	L ₁₀ > 65,000 h (40°C)

ebmpapst 618 J/2HHP, 48 V DC

type:	ebmpapst 618 J/2HHP
dimensions:	60x60x32 mm
tension:	48 V DC
power inout:	14.6 W
max. air volume:	82 m ³ /h
temperature range:	-20°C... 75°C

speed:	15,000 min⁻¹
noise level:	62 dB(A)
weight:	100 g
failure rate (L ₁₀):	L₁₀ > 65,000 h (40°C)

Fischer Elektronik GmbH & Co. KG
DEUTSCHLAND • GERMANY • ALLEMAGNE

Nottebohmstraße 28
58511 Lüdenscheid

Telefon +49 2351 435-0
Telefax +49 2351 45754

info@fischerelektronik.de
www.fischerelektronik.de

X-ON Electronics

Largest Supplier of Electrical and Electronic Components

Click to view similar products for [Heat Sinks](#) category:

Click to view products by [Fisher](#) manufacturer:

Other Similar products are found below :

[581102B00000G](#) [656-15ABPE](#) [657-20ABPNE](#) [7020B-TC12-MTG](#) [73452PPBA](#) [7G0011A](#) [PF720G](#) [A22-4026](#) [120-1873-007](#) [HAH10L](#)
[1542616-1](#) [218-40CTE3](#) [25-7520](#) [231-75PAB-13V](#) [231-75PAB-15V](#) [253-122ABE-22](#) [PSC22CB](#) [CLP212SG](#) [HAF10L](#) [HAQ10T](#) [D10100-](#)
[28](#) [BDN183CBA01](#) [3-21053-4](#) [32438](#) [TX0506-1B](#) [TX1806B](#) [LAE66A3CB](#) [WA-DT2-101E](#) [511-3U](#) [73381PPBA](#) [73403PPBA](#) [7G0047C](#)
[COMX-440-HSP](#) [510-12M](#) [D10650-40T5](#) [V8511 Y](#) [APF40-40-13CB/A01](#) [780653U04500G](#) [ATS-54310K-C2-R0](#) [FK 216 CB SA](#) [648-51AB](#)
[657-20ABPESC](#) [2341BG](#) [679-25AG](#) [FK 212 CB SA](#) [FK225 SA L1](#) [680-5K](#) [7106DG/TR](#) [7109DG/TR](#) [S14K35G3S5](#)