

## 300mA Low Noise LDO with Output Discharge Function

### Description

The FP6186 is a family of CMOS low dropout (LDO) regulators with a low dropout voltage of 200mV at 300mA designed for noise-sensitive portable device, RF and wireless applications. Quiescent current of FP6186 is as low as 60µA and it works with low-ESR ceramic capacitors, which makes it very suitable for space sensitive handheld applications. The soft-start function will eliminate current surges during start-up and the output discharge function will dissipate the residue output voltage in the capacitor during shut-down.

Other features include current limit, thermal protection, high output accuracy, and low noise output etc..

The FP6186 is available in a SOT-23-5 package.

### Features

- Low VIN and Wide VIN Range: 1.7V to 5.5V
- Guarantee Output Current 300mA
- VOUT Accuracy ±1.25%
- Ripple Rejection 75dB at 1kHz
- Low Output Noise, 50µVrms from 10Hz to 100kHz
- Quiescent Current as Low as 60µA
- Current Limit Protection
- Thermal Shutdown Protection
- 1µF Output Capacitor Required for Stability
- RoHS Compliant

### Applications

- PDAs, Mobile phones, GPS, Smartphones
- Wireless Handsets, Wireless LAN, Bluetooth®, Zigbee®
- Portable Medical Equipment
- Other Battery Powered Applications

### Pin Assignments

S5 Package (SOT-23-5)

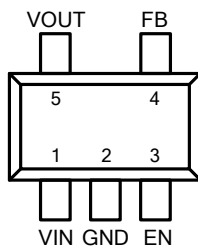
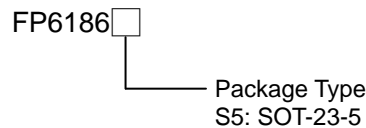


Figure 1. FP6186 Pin Assignments

### Ordering Information



### Marking Information

Part Number	Product Code
FP6186S5	FX1

## Typical Application Circuit

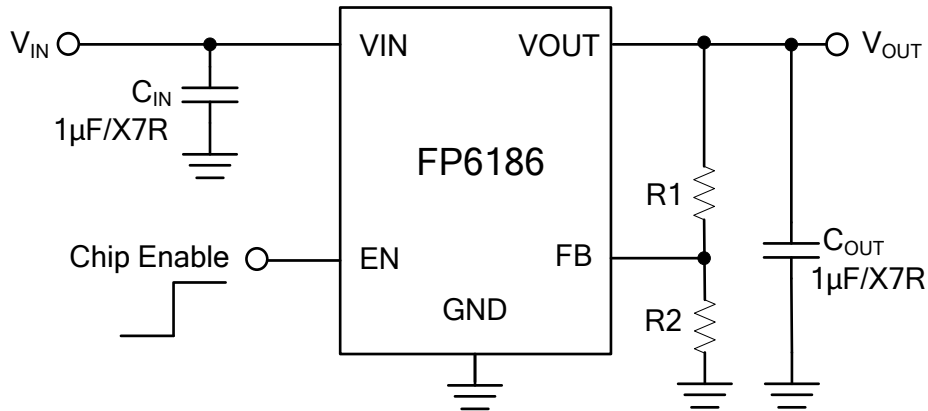


Figure 2. Typical Application Circuit for FP6186 adjustable voltage

Note 1: To prevent oscillation, it is recommended to use minimum 1µF X7R or X5R dielectric capacitors if ceramics are used as input/output capacitors.

## Functional Pin Description

Pin Name	Pin No.	Pin Function
VIN	1	Supply voltage.
GND	2	Ground.
EN	3	Chip enable control input. Pull the pin high to enable IC, and pull low or keep it floating to disable the device.
FB	4	Feedback voltage pin.
VOUT	5	LDO output.

## Block Diagram

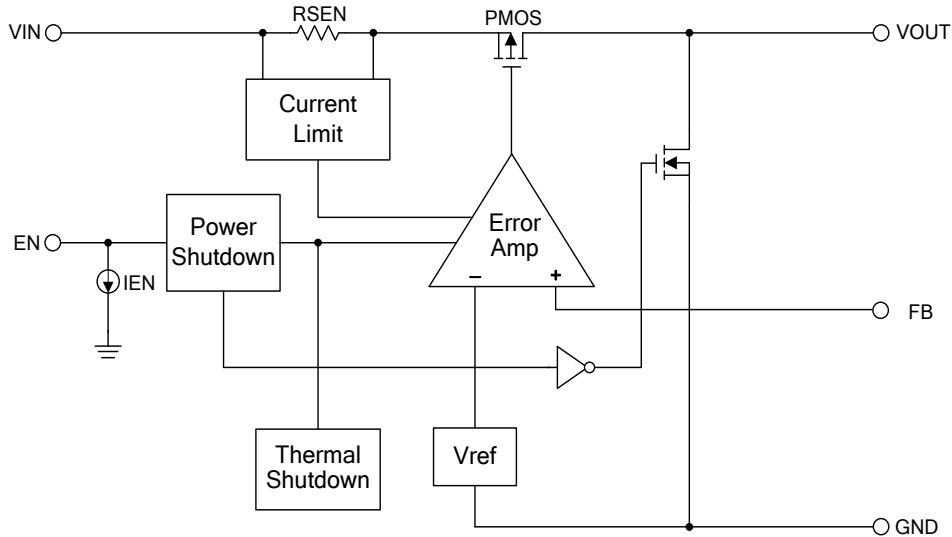


Figure 3. Block Diagram of FP6186

## Absolute Maximum Ratings <sup>(Note 2)</sup>

- VIN, EN to GND ----- -0.3V to +6V
- Power Dissipation @25°C, (P<sub>D</sub>)----- 0.4W
- Package Thermal Resistance, (θ<sub>JA</sub>)----- 250°C/W
- Package Thermal Resistance, (θ<sub>JC</sub>)----- 130°C/W
- Junction Temperature ----- -40°C to +150°C
- Storage Temperature Range (T<sub>STG</sub>) ----- -65°C to +150°C
- Lead Temperature (Soldering, 10sec) ----- +260°C

Note 2: Stresses beyond those listed under "Absolute Maximum Ratings" may cause permanent damage to the device.

## Recommended Operating Conditions

- Supply Voltage (V<sub>IN</sub>) ----- +1.7V to +5.5V
- Output Current (I<sub>OUT</sub>) ----- 300mA
- Operating Temperature Range ----- -40°C to +85°C

## Electrical Characteristics

( $V_{IN} = V_{OUT} + 1V$ ,  $V_{EN} = V_{IN}$ ,  $C_{IN} = 1\mu F$ ,  $C_{OUT} = 1\mu F$ ,  $T_A = 25^\circ C$ , unless otherwise specified.)

Parameter	Symbol	Conditions	Min	Typ.	Max	Unit	
Input Voltage Range	$V_{IN}$		1.7		5.5	V	
Output Voltage Accuracy	$\Delta V_{OUT}$	$I_{OUT} = 10mA$	-1.25		+1.25	%	
Quiescent Current	$I_Q$	$V_{EN}=5V, I_{OUT}=0A$		60		$\mu A$	
Standby Current	$I_{STBY}$	$V_{EN}=0V$		0.1	1	$\mu A$	
Feedback Reference	$V_{FB}$	$I_{OUT} = 10mA$	0.79	0.8	0.81	V	
Current Limit	$I_{LIM}$	$R_{LOAD}=0\Omega, 2.2V \leq V_{IN} \leq 5.5V$	0.45			A	
Dropout Voltage (Note 3)	$V_{DROP}$	$I_{OUT}=300mA$	$V_{OUT} = 1.2V$		700	910	mV
			$V_{OUT} = 1.5V$		400	520	
			$V_{OUT} = 1.8V$		290	380	
			$V_{OUT} = 2.5V$		260	340	
			$V_{OUT} = 2.7V$		240	310	
			$V_{OUT} = 3.0V$		220	290	
			$V_{OUT} = 3.3V$		200	260	
Line Regulation	$\Delta V_{LINE}$	$I_{OUT}=1mA, V_{IN}=V_{OUT} + 1V$ to 5V		1	8	mV	
Load Regulation (Note 4)	$\Delta V_{LOAD}$	$I_{OUT} = 0 \sim 300mA$		6	30	mV	
EN Threshold	$V_{EN(ON)}$	Start-up	1			V	
	$V_{EN(OFF)}$	Shutdown			0.4		
Enable Pin Current	$I_{EN}$			0.3		$\mu A$	
Output Noise Voltage (Note 5)	$V_{ON}$	$C_{OUT}=1\mu F, I_{OUT}=0A$		50		$\mu V_{RMS}$	
Output Discharge Resistance	$R_{DIS}$	$V_{EN}=0V$		60		$\Omega$	
Ripple Rejection (Note 5)	PSRR	$V_{IN}=V_{OUT}+1V_{DC}+0.2V_{P-P(AC)}$ , $f_{RIPPLE}=1KHz, V_{OUT} \geq 1.8V$ , $I_{OUT}=10mA$		75		dB	
Thermal Shutdown Threshold (Note 5)	$T_{SD}$			145		$^\circ C$	
	$\Delta T_{SD}$	Hysteresis		25			

Note 3 : The dropout voltage is defined as  $V_{IN}-V_{OUT}$ , which is measured when  $V_{OUT}$  drops 2% of its normal value with the specified output current.

Note 4 : Load regulation and dropout voltage are measured at a constant junction temperature by using a 40ms low duty cycle current pulse.

Note 5 : Guarantee by design.

## Applications Information

The FP6186 is a low-noise, low-dropout, low-quiescent current linear regulator designed for space-restricted applications. These devices can supply loads up to 300mA. As shown in the block diagram, the FP6186 consists of a highly accurate band gap core, noise bypass circuit, error amplifier, P-channel pass transistor, soft start, fast discharge and an internal feedback voltage divider. The band gap reference is connected to the error amplifier's inverting input. The error amplifier compares this reference with the feedback voltage and amplifies the difference. If the feedback voltage is lower than the reference voltage, the pass transistor gate will be pulled low. This allows more current to pass to the output and increases the output voltage. If the feedback voltage is too high, the pass transistor gate will be pulled high, allowing less current to pass to the output. The output voltage is feedback through an internal resistor voltage divider connected to the VOUT pin. Additional blocks include a current limit, over temperature protection and shutdown logic. Besides, current limit and on chip thermal shutdown features provide protection against any combination of over-load or ambient temperature that could cause junction temperature exceeding maximum rating.

### Output and Input Capacitor

The FP6186 regulator is designed to be stable with a wide range of output capacitors. The ESR of the output capacitor affects stability. Larger value of the output capacitor decreases the peak deviations and improves transition response for larger current changes.

The capacitor types (aluminum, ceramic and tantalum) have different characterizations, such as temperature and voltage coefficients. All ceramic capacitors were manufactured with a variety of dielectrics, each with different behavior across temperature and applications. Common dielectrics used are X5R, X7R and Y5V. It is recommended to use 1.0 $\mu$ F to 4.7 $\mu$ F X5R or X7R dielectric ceramic capacitors with 10m $\Omega$  to 30m $\Omega$  ESR range between device outputs to ground for transient stability. The FP6186 is designed to be stable with low ESR ceramic capacitors and higher values of capacitors, and ESR could improve output stability. The ESR of output capacitor is very important because it generates a zero to provide phase lead for loop stability.

There is no requirement for the ESR on the input capacitor, but its voltage and temperature coefficient have to be considered for device application environment.

### Current Limit

The FP6186 includes a current limit. It monitors the output current and controls the pass transistor's gate voltage to limit the output current under 450mA. The output can be shorted to ground for an indefinite amount of time without damaging the part.

### Quick Discharge

The FP6186 has built-in a quick discharge circuitry to protect system function correct operation. This discharge block discharges output capacitor quickly to avoid low output voltage level to affect system's MCU abnormal work when IC is power off or enable pin pulls down.

### Dropout Voltage

The minimum dropout voltage of LDO determines the lowest usable supply voltage. In battery-powered systems, this determines the useful end-of-life battery voltage. Because the FP6186 uses a P-channel MOSFET pass transistor, its dropout voltage is a function of drain-to-source on resistance ( $R_{DS-ON}$ ) multiplied by the load current

### Over Temperature Protection

Over temperature protection limits total power dissipation in the FP6186. When the junction temperature exceeds 145°C, the thermal sensor will signal the shutdown logic and turn off the pass transistor. The thermal sensor will turn the pass transistor on again after the IC's junction temperature drops 25°C, resulting in a pulsed output during continuous thermal-overload conditions.

### Thermal Consideration

The power handling capability of the device will be limited by maximum 125°C operation junction temperature. The power dissipated by the device will be estimated by  $P_D = I_{OUT} \times (V_{IN} - V_{OUT})$ . The power dissipation should be lower than the maximum power dissipation listed in "Absolute Maximum Ratings" section.

## Applications Information (Continued)

### Output Voltage Setting

The output voltage of regulator is determined by connecting external resistor dividers. The external resistor divider connects with FB pin. The output voltage is determined by the following equation:

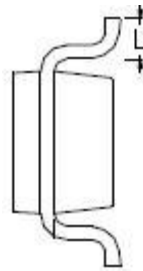
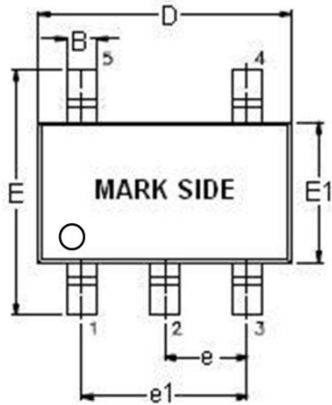
$$V_{OUT} = \frac{R1+R2}{R2} \times V_{FB} = \left(1 + \frac{R1}{R2}\right) \times 0.8$$

### Active/Shutdown Input Operation

The FP6186 is turned off by pulling the EN pin low and turned on by pulling it high. The enable input is TTL/CMOS compatible threshold for simple logic interfacing. If this feature is not used, the EN pin should be connected to VIN to keep the regulator output operating normally. It will become shutdown with this pin floating because EN pin has built-in a pull down resistor (refer to Block Diagram).

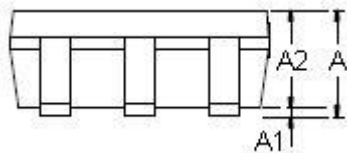
Outline Information

SOT-23-5 Package (Unit: mm)

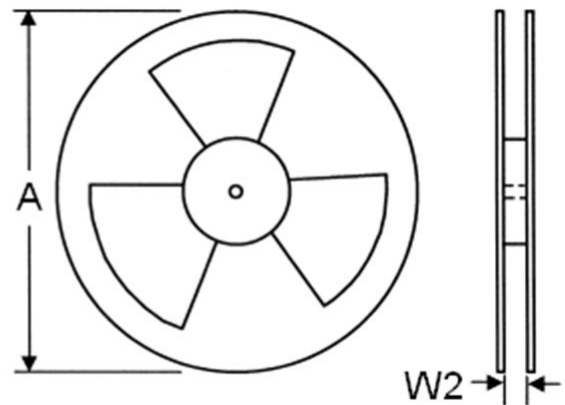
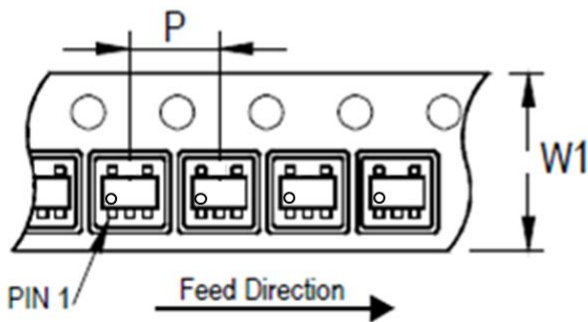


SYMBOLS UNIT	DIMENSION IN MILLIMETER	
	MIN	MAX
A	0.90	1.45
A1	0.00	0.15
A2	0.90	1.30
B	0.30	0.50
D	2.80	3.00
E	2.60	3.00
E1	1.50	1.70
e	0.90	1.00
e1	1.80	2.00
L	0.30	0.60

Note: Followed From JEDEC MO-178-C.



Carrier Dimensions



Tape Size (W1) mm	Pocket Pitch (P) mm	Reel Size (A)		Reel Width (W2) mm	Empty Cavity Length mm	Units per Reel
		in	mm			
8	4	7	180	8.4	300~1000	3,000

Life Support Policy

Fitipower's products are not authorized for use as critical components in life support devices or other medical systems.

## X-ON Electronics

Largest Supplier of Electrical and Electronic Components

*Click to view similar products for [Linear Voltage Regulators](#) category:*

*Click to view products by [Fitipower](#) manufacturer:*

Other Similar products are found below :

[LV5684PVD-XH](#) [MCDTSA6-2R](#) [L7815ACV-DG](#) [LV56801P-E](#) [UA7805CKC](#) [714954EB](#) [ZMR500QFTA](#) [BA033LBSG2-TR](#)  
[NCV78M05ABDTRKG](#) [LV5680P-E](#) [L79M05T-E](#) [L78LR05D-MA-E](#) [NCV317MBTG](#) [NTE7227](#) [MP2018GZD-33-P](#) [MP2018GZD-5-P](#)  
[LV5680NPVC-XH](#) [ZTS6538SE](#) [UA78L09CLP](#) [UA78L09CLPR](#) [CAT6221-PPTD-GT3](#) [MC78M09CDTRK](#) [NCV51190MNTAG](#)  
[BL1118CS8TR1833](#) [BL8563CKETR18](#) [BL8077CKETR33](#) [BL9153-33CC3TR](#) [BL9161G-15BADRN](#) [BL9161G-28BADRN](#)  
[BRCO7530MMC](#) [CJ7815B-TFN-ARG](#) [LM317C](#) [GM7333K](#) [GM7350K](#) [XC6206P332MR](#) [HT7533](#) [LM7912S/TR](#) [LT1764S/TR](#) [LM7805T](#)  
[LM338T](#) [LM1117IMP-3.3/TR](#) [HT1117AM-3.3](#) [HT7550S](#) [AMS1117-3.3](#) [HT7150S](#) [78L12](#) [HT7550](#) [HT7533-1](#) [HXY6206I-2.5](#) [HT7133](#)