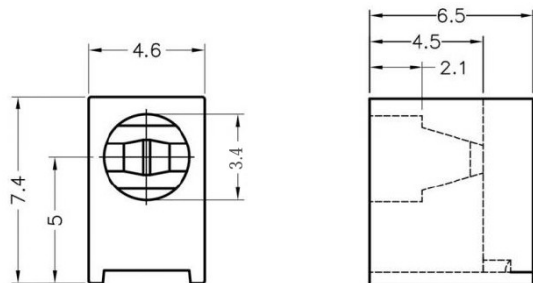
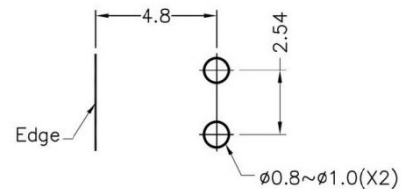


## LED-301



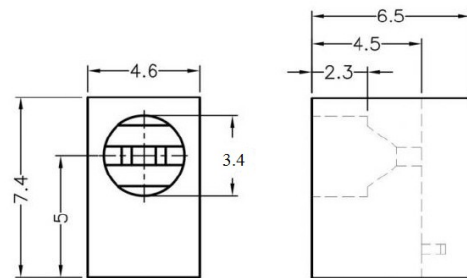
MATERIAL: NYLON 66(UL)  
 FLAME CLASS: 94V-2  
 COLOR:BLACK  
 UNIT:mm  
 RECOMMEND ASSEMBLING LED SIZE : 3  
 NUMBER OF ASSEMBLING LED : 1



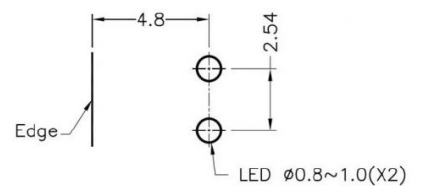
MOUNTING HOLE

To weld  $\phi 3$  LED on board with 90 degrees, and same height, but avoid pins broken.

## FIX-LED-301A



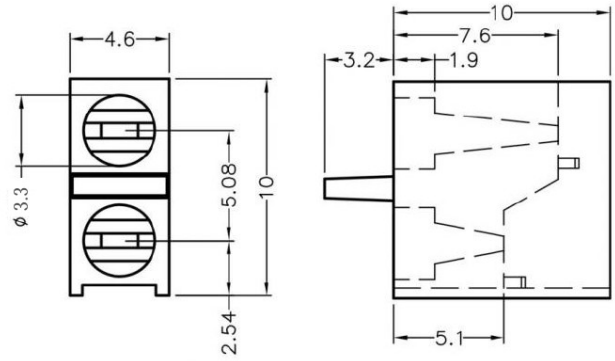
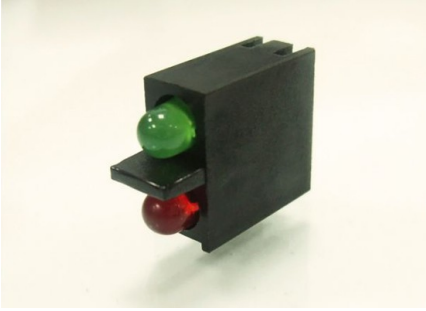
MATERIAL: NYLON 66(UL)  
 FLAME CLASS: 94V-2  
 COLOR:BLACK  
 UNIT:mm  
 RECOMMEND ASSEMBLING LED SIZE : 3  
 NUMBER OF ASSEMBLING LED : 1



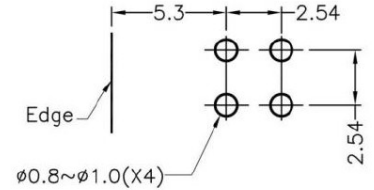
MOUNTING HOLE

To weld  $\phi 3$  LED on board with 90 degrees, and same height, but avoid pins broken.

## FIX-LED-305



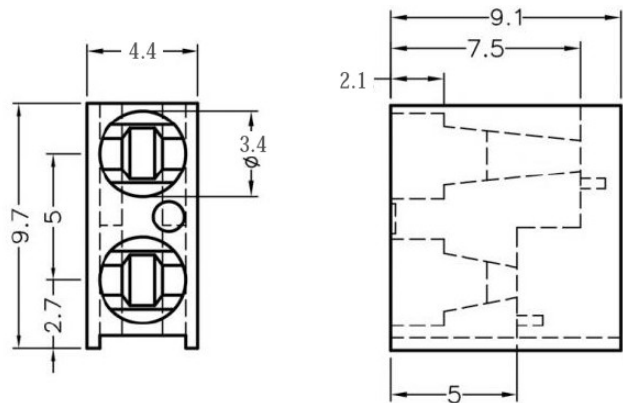
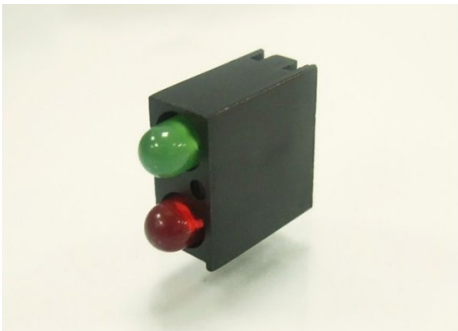
MATERIAL: NYLON 66(UL)  
 FLAME CLASS: 94V-2  
 COLOR:BLACK  
 UNIT:mm  
 RECOMMEND ASSEMBLING LED SIZE : 3  
 NUMBER OF ASSEMBLING LED : 2



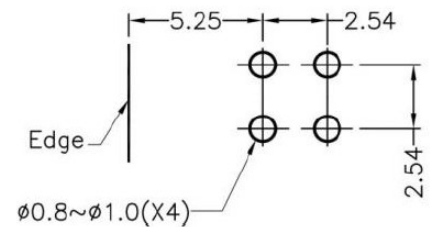
MOUNTING HOLE

To weld  $\phi 3$  LED on board with 90 degrees, and same height, but avoid pins broken.

## FIX-LED-306



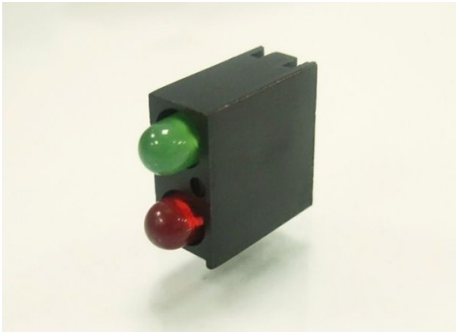
MATERIAL: NYLON 66(UL)  
 FLAME CLASS: 94V-2  
 COLOR:BLACK  
 UNIT:mm  
 RECOMMEND ASSEMBLING LED SIZE : 3  
 NUMBER OF ASSEMBLING LED : 2



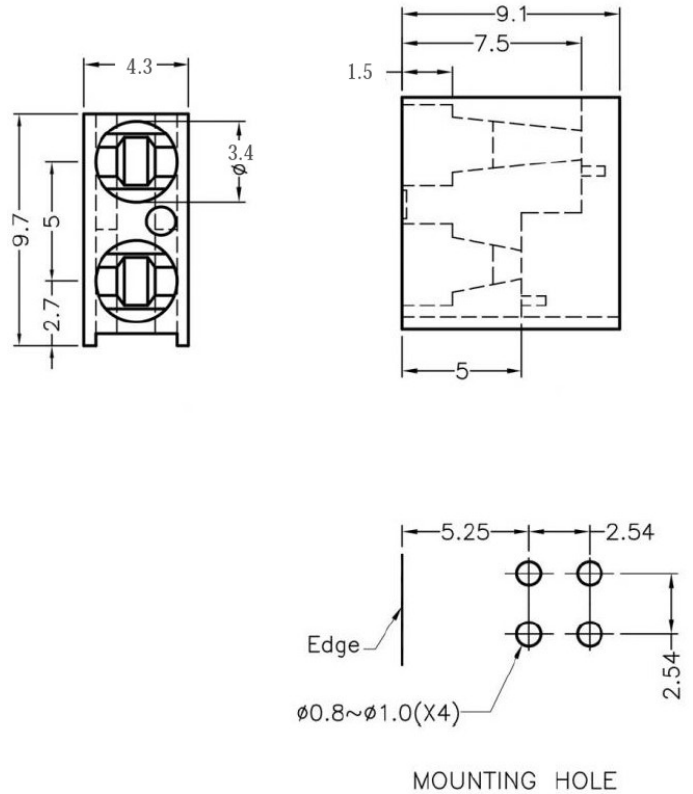
MOUNTING HOLE

To weld  $\phi 3$  LED on board with 90 degrees, and same height, but avoid pins broken.

## FIX-LED-306A

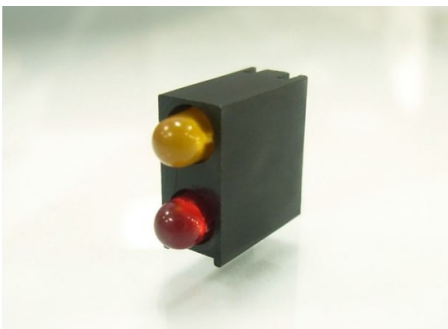


MATERIAL: NYLON 66(UL)  
 FLAME CLASS: 94V-2  
 COLOR:BLACK  
 UNIT:mm  
 RECOMMEND ASSEMBLING LED SIZE : 3  
 NUMBER OF ASSEMBLING LED : 2

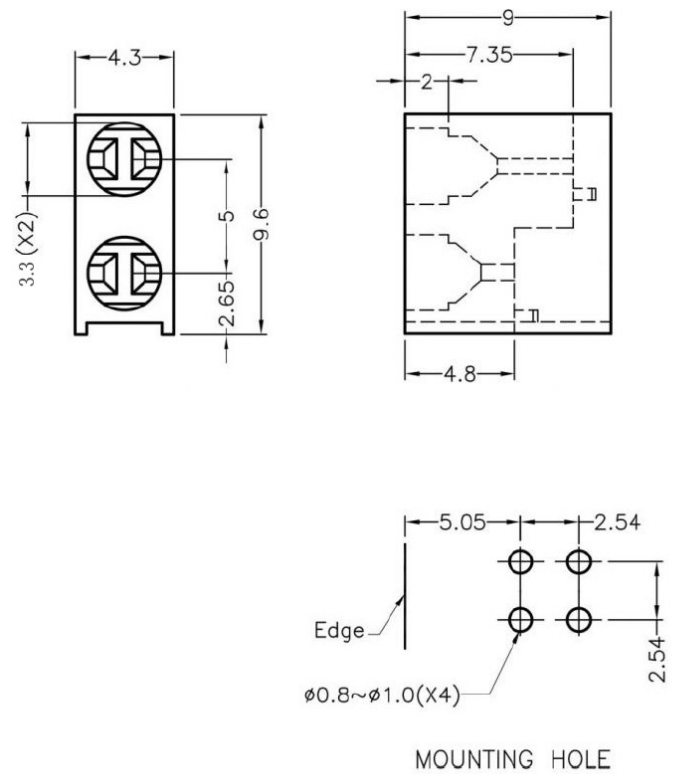


To weld  $\phi 3$  LED on board with 90 degrees, and same height, but avoid pins broken.

## FIX-LED-306B

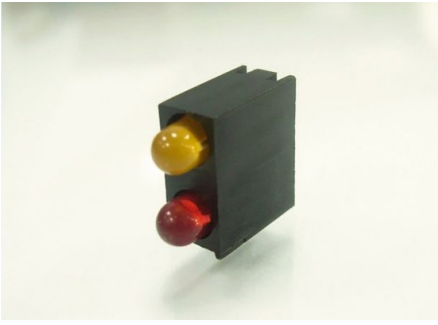


MATERIAL: NYLON 66(UL)  
 FLAME CLASS: 94V-2  
 COLOR:BLACK  
 UNIT:mm  
 RECOMMEND ASSEMBLING LED SIZE : 3  
 NUMBER OF ASSEMBLING LED : 2

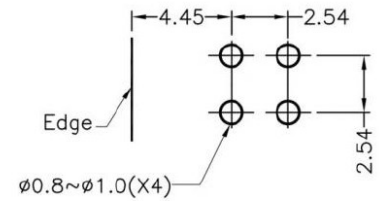
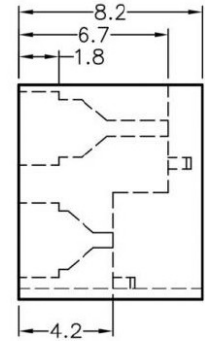
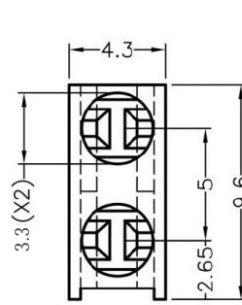


To weld  $\phi 3$  LED on board with 90 degrees, and same height, but avoid pins broken.

## FIX-LED-307



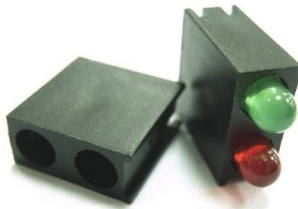
MATERIAL: NYLON 66(UL)  
 FLAME CLASS: 94V-2  
 COLOR:BLACK  
 UNIT:mm  
 RECOMMEND ASSEMBLING LED SIZE : 3  
 NUMBER OF ASSEMBLING LED : 2



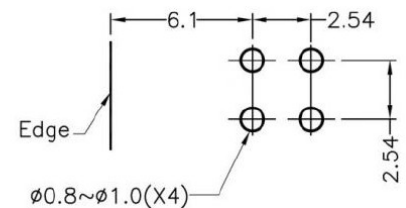
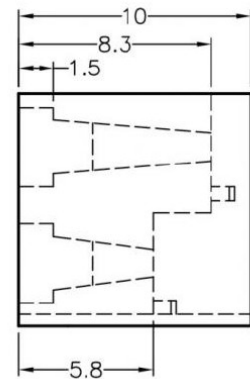
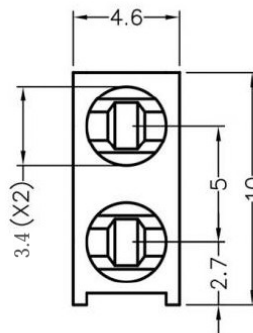
MOUNTING HOLE

To weld  $\phi 3$  LED on board with 90 degrees, and same height, but avoid pins broken.

## FIX-LED-308



MATERIAL: NYLON 66(UL)  
 FLAME CLASS: 94V-2  
 COLOR:BLACK  
 UNIT:mm  
 RECOMMEND ASSEMBLING LED SIZE : 3  
 NUMBER OF ASSEMBLING LED : 2



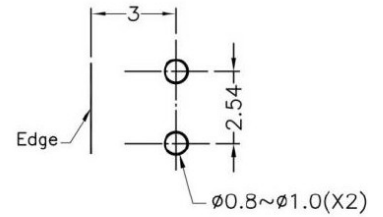
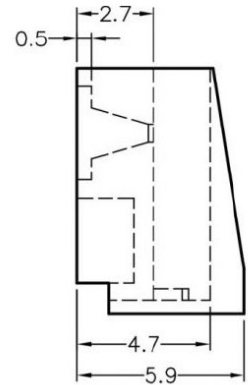
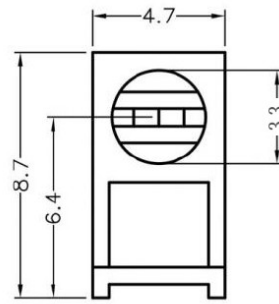
MOUNTING HOLE

To weld  $\phi 3$  LED on board with 90 degrees, and same height, but avoid pins broken.

## FIX-LED-312



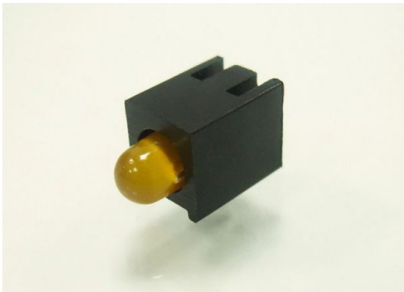
MATERIAL: NYLON 66(UL)  
 FLAME CLASS: 94V-2  
 COLOR:BLACK  
 UNIT:mm  
 RECOMMEND ASSEMBLING LED SIZE : 3  
 NUMBER OF ASSEMBLING LED : 1



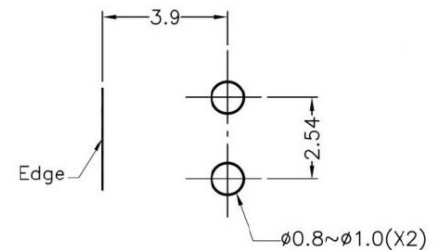
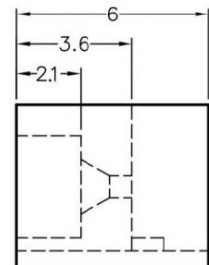
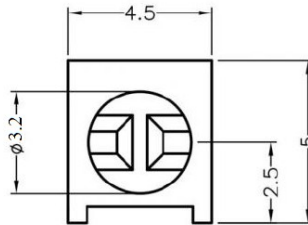
MOUNTING HOLE

To weld  $\phi 3$  LED on board with 90 degrees, and same height, but avoid pins broken.

## FIX-LED-313



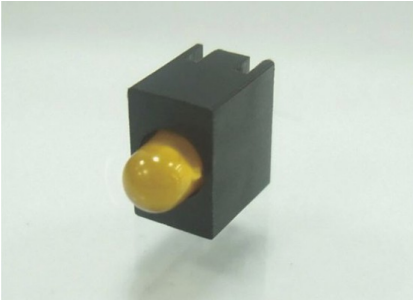
MATERIAL: NYLON 66(UL)  
 FLAME CLASS: 94V-2  
 COLOR:BLACK  
 UNIT:mm  
 RECOMMEND ASSEMBLING LED SIZE : 3  
 NUMBER OF ASSEMBLING LED : 1



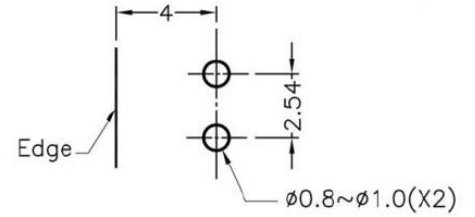
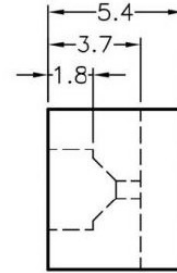
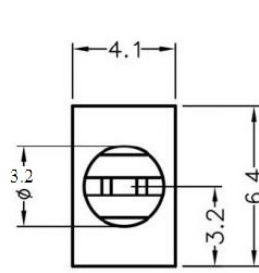
MOUNTING HOLE

To weld  $\phi 3$  LED on board with 90 degrees, and same height, but avoid pins broken.

## FIX-LED-314



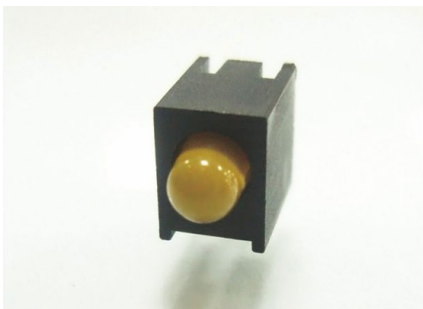
MATERIAL: NYLON 66(UL)  
 FLAME CLASS: 94V-2  
 COLOR:BLACK  
 UNIT:mm  
 RECOMMEND ASSEMBLING LED SIZE : 3  
 NUMBER OF ASSEMBLING LED : 1



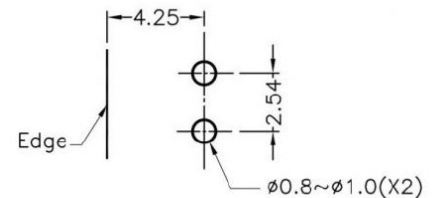
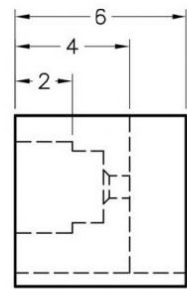
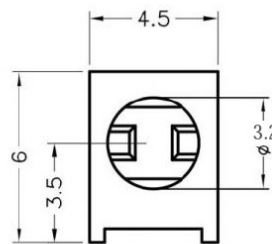
MOUNTING HOLES

To weld  $\phi 3$  LED on board with 90 degrees, and same height, but avoid pins broken.

## FIX-LED-316



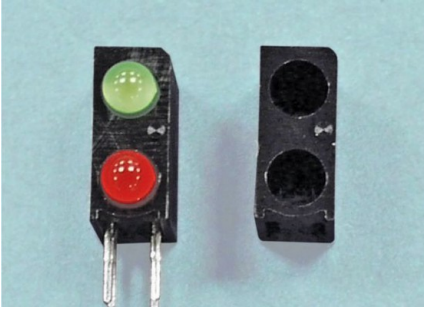
MATERIAL: NYLON 66(UL)  
 FLAME CLASS: 94V-2  
 COLOR:BLACK  
 UNIT:mm  
 RECOMMEND ASSEMBLING LED SIZE : 3  
 NUMBER OF ASSEMBLING LED : 1



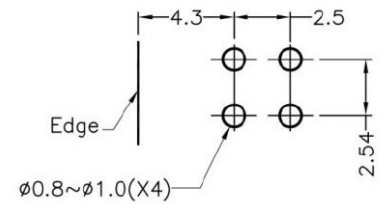
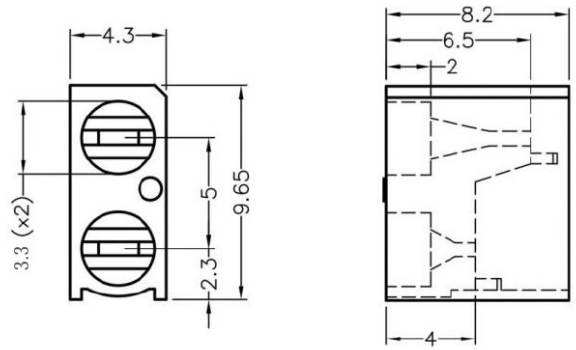
MOUNTING HOLES

To weld  $\phi 3$  LED on board with 90 degrees, and same height, but avoid pins broken.

## FIX-LED-322



MATERIAL: NYLON 66(UL)  
 FLAME CLASS: 94V-2  
 COLOR:BLACK  
 UNIT:mm  
 RECOMMEND ASSEMBLING LED SIZE : 3  
 NUMBER OF ASSEMBLING LED : 2



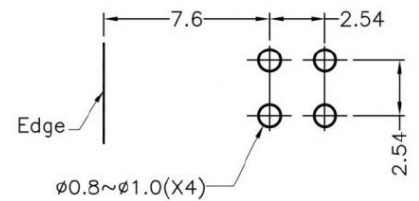
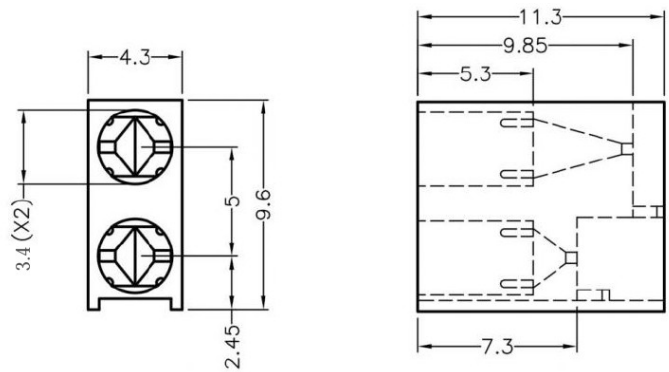
MOUNTING HOLE

To weld  $\phi 3$  LED on board with 90 degrees, and same height, but avoid pins broken.

## FIX-LED-323



MATERIAL: NYLON 66(UL)  
 FLAME CLASS: 94V-2  
 COLOR:BLACK  
 UNIT:mm  
 RECOMMEND ASSEMBLING LED SIZE : 3  
 NUMBER OF ASSEMBLING LED : 2

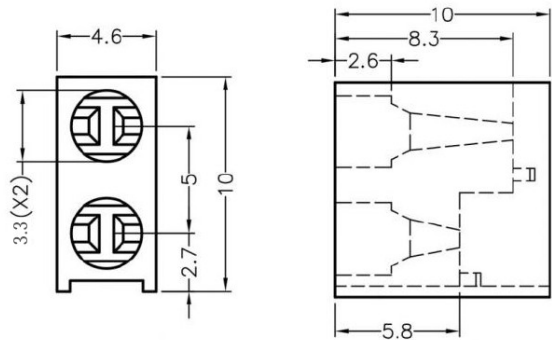


MOUNTING HOLE

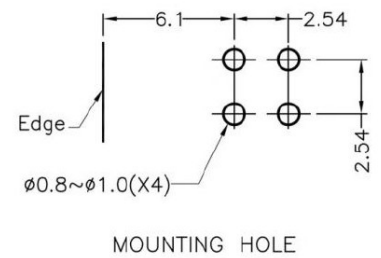
To weld  $\phi 3$  LED on board with 90 degrees, and same height, but avoid pins broken.



## FIX-LED-324

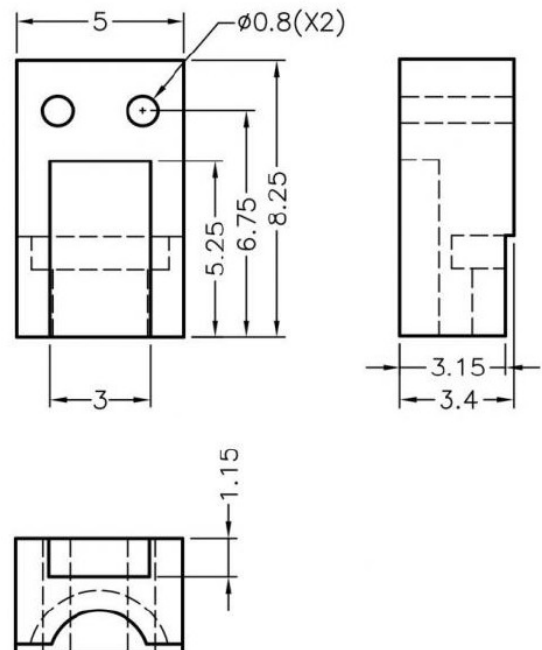


MATERIAL: NYLON 66(UL)  
 FLAME CLASS: 94V-2  
 COLOR:BLACK  
 UNIT:mm  
 RECOMMEND ASSEMBLING LED SIZE : 3  
 NUMBER OF ASSEMBLING LED : 2



To weld  $\phi 3$  LED on board with 90 degrees, and same height, but avoid pins broken.

## FIX-LED-325



MATERIAL: NYLON 66(UL)  
 FLAME CLASS: 94V-2  
 COLOR:BLACK  
 UNIT:mm  
 RECOMMEND ASSEMBLING LED SIZE : 3  
 NUMBER OF ASSEMBLING LED : 1

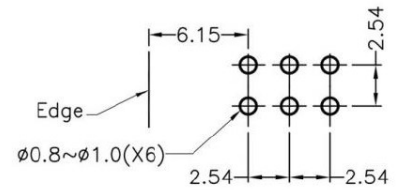
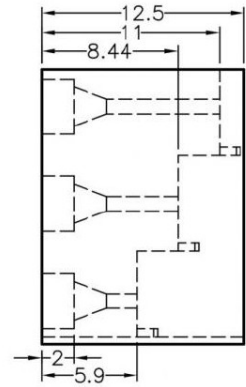
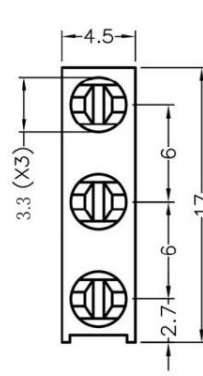
To weld  $\phi 3$  LED on board with 90 degrees, and same height, but avoid pins broken.



## FIX-LED-330



MATERIAL: NYLON 66(UL)  
 FLAME CLASS: 94V-2  
 COLOR:BLACK  
 UNIT:mm  
 RECOMMEND ASSEMBLING LED SIZE : 3  
 NUMBER OF ASSEMBLING LED : 3



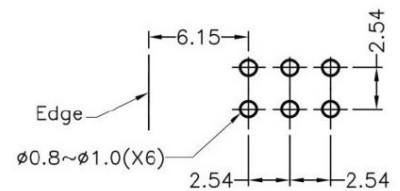
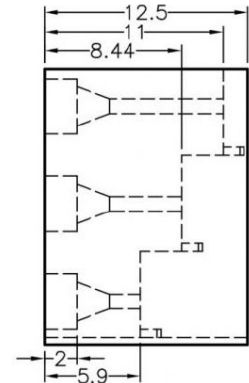
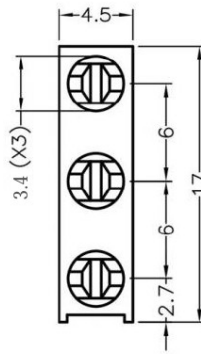
MOUNTING HOLE

To weld  $\phi 3$  LED on board with 90 degrees, and same height, but avoid pins broken.

## FIX-LED-331



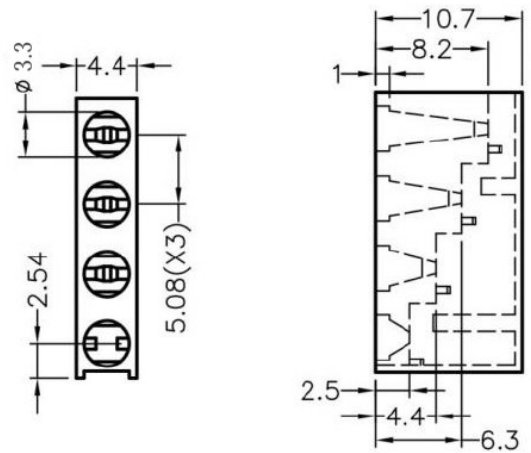
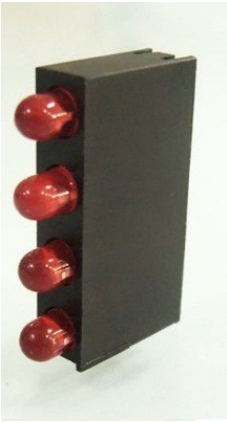
MATERIAL: NYLON 66(UL)  
 FLAME CLASS: 94V-2  
 COLOR:BLACK  
 UNIT:mm  
 RECOMMEND ASSEMBLING LED SIZE : 3  
 NUMBER OF ASSEMBLING LED : 3



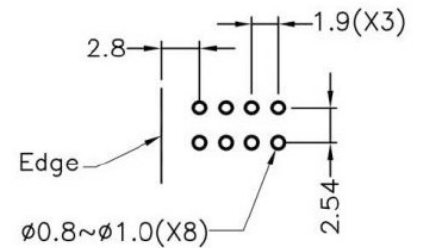
MOUNTING HOLE

To weld  $\phi 3$  LED on board with 90 degrees, and same height, but avoid pins broken.

## FIX-LED-340



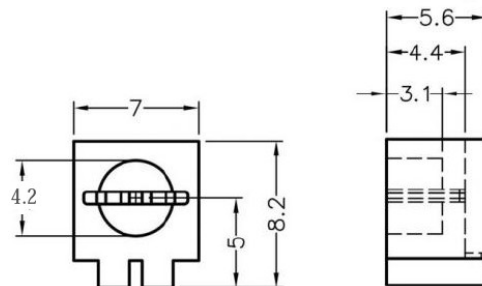
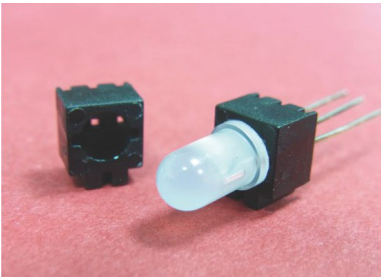
MATERIAL: NYLON 66(UL)  
 FLAME CLASS: 94V-2  
 COLOR:BLACK  
 UNIT:mm  
 RECOMMEND ASSEMBLING LED SIZE : 3  
 NUMBER OF ASSEMBLING LED : 4



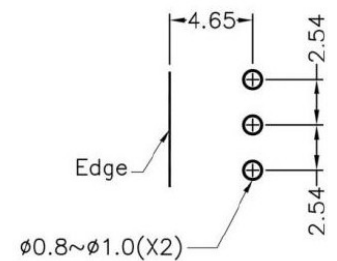
MOUNTING HOLE

To weld  $\phi 3$  LED on board with 90 degrees, and same height, but avoid pins broken.

## FIX-LED-319



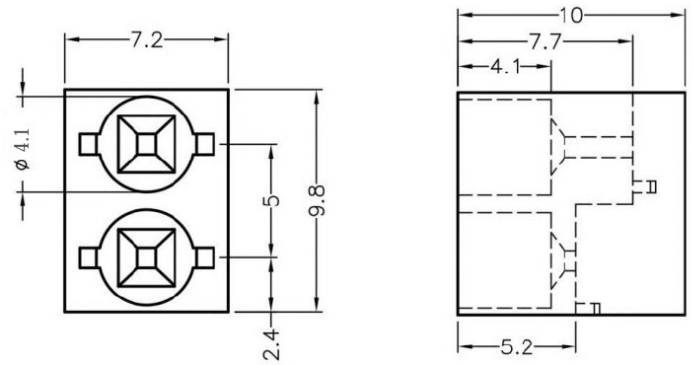
MATERIAL: NYLON 66(UL)  
 FLAME CLASS: 94V-2  
 COLOR:BLACK  
 UNIT:mm  
 RECOMMEND ASSEMBLING LED SIZE : 3  
 NUMBER OF ASSEMBLING LED : 1



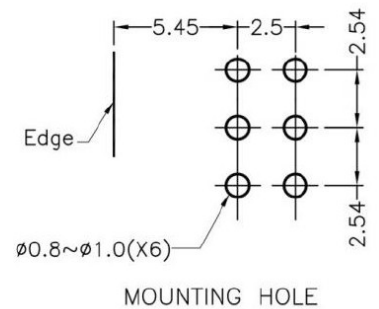
MOUNTING HOLE

To weld  $\phi 3$  3PIN LED on board with 90 degrees, and same height, but avoid pins broken.

## FIX-LED-310

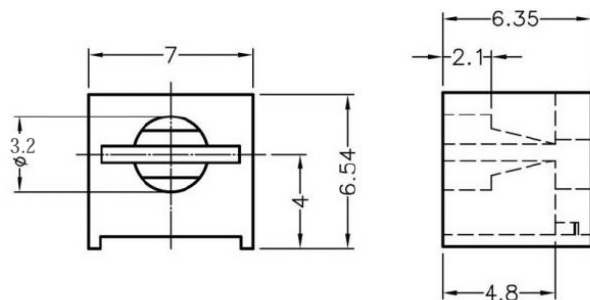
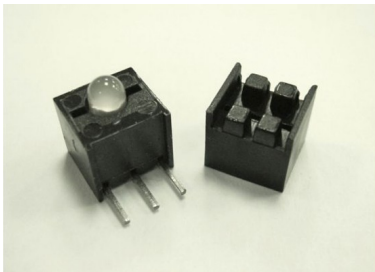


MATERIAL: NYLON 66(UL)  
 FLAME CLASS: 94V-2  
 COLOR:BLACK  
 UNIT:mm  
 RECOMMEND ASSEMBLING LED SIZE : 3  
 NUMBER OF ASSEMBLING LED : 2

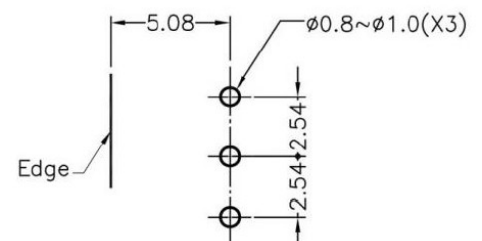


To weld  $\phi 3$  3PIN LED on board with 90 degrees, and same height, but avoid pins broken.

## FIX-LED-343



MATERIAL: NYLON 66(UL)  
 FLAME CLASS: 94V-2  
 COLOR:BLACK  
 UNIT:mm  
 RECOMMEND ASSEMBLING LED SIZE : 3  
 NUMBER OF ASSEMBLING LED : 1



To weld  $\phi 3$  3PIN LED on board with 90 degrees, and same height, but avoid pins broken.

## X-ON Electronics

Largest Supplier of Electrical and Electronic Components

*Click to view similar products for [Lamps category](#):*

*Click to view products by [Fix & Fasten manufacturer](#):*

Other Similar products are found below :

[5911-086-13](#) [5AB](#) [6180](#) [7009](#) [8623](#) [909](#) [912](#) [1224](#) [1230](#) [DE603](#) [DNW21-DW10/BLA](#) [BF20100-11B](#) [1892](#) [NL177WL2A](#) [NL276C2A](#)  
[IFL-LX2162-16T](#) [C2A-T](#) [C9A](#) [301](#) [303](#) [SM2440L](#) [A1C](#) [A2B](#) [19](#) [268](#) [GT-NE6H1225T](#) [CM1820](#) [CM5004WW](#) [303](#) [32-2211T](#) [36EN-2113](#)  
[407](#) [4916S1](#) [521-7332](#) [5314N1](#) [5314N2](#) [311](#) [WWT1-EW10/GRN](#) [4925H1](#) [DW07](#) [MS25231-313](#) [5603437](#) [5603851](#) [CM2](#) [7683EBP](#) [8553](#)  
[XE135B](#) [WWT2-EW34BLA](#) [5705H7](#) [NL2951WL2G](#)