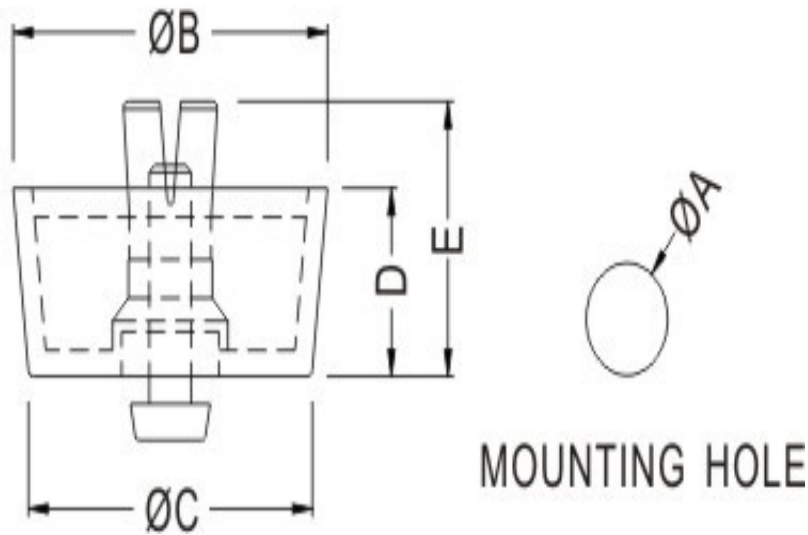




# FIX & Fasten

- ◆ MATERIAL:PE/TPR
- ◆ PIN MATERIAL:PP
- ◆ COLOR:BLACK/GRAY/COMPUTER
- ◆ UNIT:mm



PART NO	A	B	C	D	E	CHASSIS THICKNESS	PACKAGE
FF-1	8.0	20.8	19.8	6.4	11.8	1.0~2.5	500
FF-2	8.0	20.0	18.0	10.0	15.4	1.0~2.5	500
FF-3	8.0	23.7	19.5	13.7	19.2	1.0~2.5	250
FF-4	8.0	25.0	23.5	6.5	12.5	1.0~2.5	500
FF-5	8.0	30.0	27.7	12.8	18.8	1.0~2.5	200
FF-6	10.0	28.5	26.5	8.2	14.0	1.0~3.5	250
FF-7	5.0	12.7	12.0	4.4	8.5	1.0~2.0	1000
FF-8	5.0	15.7	15.0	4.4	8.5	1.0~2.0	1000
FF-9	8.0	20.0	18.6	4.0	7.0	1.0~2.0	500

FF-10	8.0	23.8	22.0	5.0	10.0	1.0~2.5	500
FF-11	10.0	31.5	28.5	7.8	13.6	1.0~2.5	250
FF-12	8.0	20.0	18.0	15.0	20.8	1.0~3.0	250
FF-13	8.0	20.0	18.0	18.0	24.3	0.8~1.0	250
FF-14	8.0	19.5	18.7	5.0	10.5	0.8~2.0	500
FF-16	10.0	29.4	26.5	15.0	23.0	1.0~3.5	100
FF-21	8.0	20.0	19.3	20.5	25.6	0.8~2.0	250
FF-22	8.0	19.2	17.2	7.9	12.1	0.8~1.2	500
FF-24	8.0	23.0	21.0	8.0	13.3	0.8~2.0	250
FF-25	8.0	24.0	20.0	10.5	15.8	0.8~2.0	250
FF-26	8.0	22.0	21.0	3.5	10.5	1.0~3.0	500
FF-27	8.0	26.7	24.8	16.0	21.0	1.0~3.0	250
FF-28	8.0	20.0	18.0	10.0	13.5	0.8~2.0	250
FF-31	10.0	27.0	26.0	6.9	12.0	0.8~2.0	250
FF-35	6.0	14.0	12.7	5.8	10.6	1.0~2.5	1000
FF-36	8.0	22.0	20.0	3.5	10.5	1.0~3.0	1000
FF-43	5.0	12.0	10.5	5.8	10.0	1.0~2.5	1000
FF-44	8.0	20.8	19.8	6.9	11.8	1.0~3.4	500

## **X-ON Electronics**

Largest Supplier of Electrical and Electronic Components

*Click to view similar products for [Control Switches](#) category:*

*Click to view products by [Fix & Fasten](#) manufacturer:*

Other Similar products are found below :

[80887-99](#) [80932-99](#) [86855-00](#) [88814-30](#) [1424293-1](#) [HW4S-2TC10](#) [89721-12](#) [89804-08](#) [SSN](#) [RL01801](#) [ASD2L20N-LVO](#) [50051857-17](#)  
[50099156-001-05](#) [51.155R-15200](#) [50058920-26](#) [CP-FA51](#) [CP-FA49](#) [ACCU-SC/L-3000](#) [PP9M](#) [PP87G](#) [PP86GA](#) [PP71G](#) [PP70G](#) [PP6G](#)  
[PP62G](#) [PP58BL](#) [PP56G](#) [PP86GB](#) [PP77GA](#) [PP76G](#) [PP4M](#) [PP47G](#) [PP46G](#) [PP41M](#) [PP40G](#) [PP32G](#) [RD-20](#) [PP23M](#) [PP12G](#) [PORTAPRO](#)  
[POM-2708](#) [PNB-2005](#) [3057.0012](#) [CV-075](#) [CV-140SB](#) [CV-150](#) [CV-150S](#) [214X20XK](#) [CV-180](#) [CV-200MB](#)