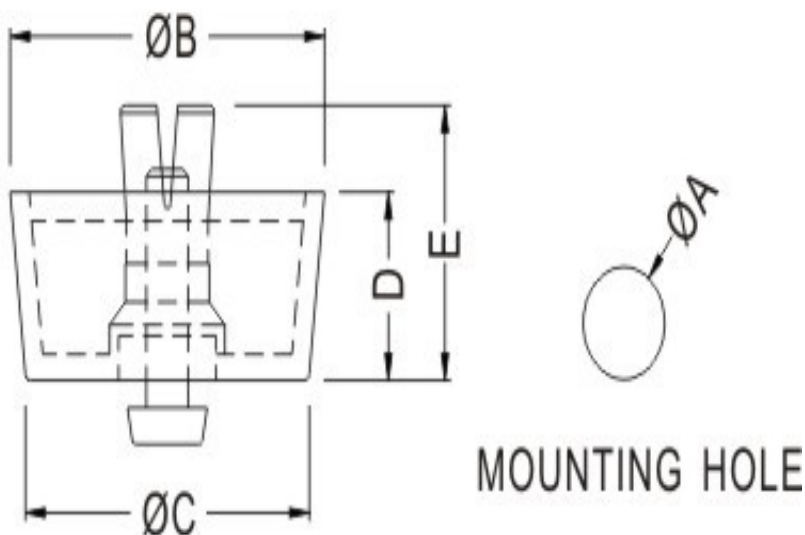




FIX & Fasten

- ◆ MATERIAL:PE/TPR
- ◆ PIN MATERIAL:PP
- ◆ COLOR:BLACK/GRAY/COMPUTER
- ◆ UNIT:mm



| PART NO | A | B | C | D | E | CHASSIS THICKNESS | PACKAGE |
|---------|------|------|------|------|------|-------------------|---------|
| FF-1 | 8.0 | 20.8 | 19.8 | 6.4 | 11.8 | 1.0~2.5 | 500 |
| FF-2 | 8.0 | 20.0 | 18.0 | 10.0 | 15.4 | 1.0~2.5 | 500 |
| FF-3 | 8.0 | 23.7 | 19.5 | 13.7 | 19.2 | 1.0~2.5 | 250 |
| FF-4 | 8.0 | 25.0 | 23.5 | 6.5 | 12.5 | 1.0~2.5 | 500 |
| FF-5 | 8.0 | 30.0 | 27.7 | 12.8 | 18.8 | 1.0~2.5 | 200 |
| FF-6 | 10.0 | 28.5 | 26.5 | 8.2 | 14.0 | 1.0~3.5 | 250 |
| FF-7 | 5.0 | 12.7 | 12.0 | 4.4 | 8.5 | 1.0~2.0 | 1000 |
| FF-8 | 5.0 | 15.7 | 15.0 | 4.4 | 8.5 | 1.0~2.0 | 1000 |
| FF-9 | 8.0 | 20.0 | 18.6 | 4.0 | 7.0 | 1.0~2.0 | 500 |

| | | | | | | | |
|-------|------|------|------|------|------|---------|------|
| FF-10 | 8.0 | 23.8 | 22.0 | 5.0 | 10.0 | 1.0~2.5 | 500 |
| FF-11 | 10.0 | 31.5 | 28.5 | 7.8 | 13.6 | 1.0~2.5 | 250 |
| FF-12 | 8.0 | 20.0 | 18.0 | 15.0 | 20.8 | 1.0~3.0 | 250 |
| FF-13 | 8.0 | 20.0 | 18.0 | 18.0 | 24.3 | 0.8~1.0 | 250 |
| FF-14 | 8.0 | 19.5 | 18.7 | 5.0 | 10.5 | 0.8~2.0 | 500 |
| FF-16 | 10.0 | 29.4 | 26.5 | 15.0 | 23.0 | 1.0~3.5 | 100 |
| FF-21 | 8.0 | 20.0 | 19.3 | 20.5 | 25.6 | 0.8~2.0 | 250 |
| FF-22 | 8.0 | 19.2 | 17.2 | 7.9 | 12.1 | 0.8~1.2 | 500 |
| FF-24 | 8.0 | 23.0 | 21.0 | 8.0 | 13.3 | 0.8~2.0 | 250 |
| FF-25 | 8.0 | 24.0 | 20.0 | 10.5 | 15.8 | 0.8~2.0 | 250 |
| FF-26 | 8.0 | 22.0 | 21.0 | 3.5 | 10.5 | 1.0~3.0 | 500 |
| FF-27 | 8.0 | 26.7 | 24.8 | 16.0 | 21.0 | 1.0~3.0 | 250 |
| FF-28 | 8.0 | 20.0 | 18.0 | 10.0 | 13.5 | 0.8~2.0 | 250 |
| FF-31 | 10.0 | 27.0 | 26.0 | 6.9 | 12.0 | 0.8~2.0 | 250 |
| FF-35 | 6.0 | 14.0 | 12.7 | 5.8 | 10.6 | 1.0~2.5 | 1000 |
| FF-36 | 8.0 | 22.0 | 20.0 | 3.5 | 10.5 | 1.0~3.0 | 1000 |
| FF-43 | 5.0 | 12.0 | 10.5 | 5.8 | 10.0 | 1.0~2.5 | 1000 |
| FF-44 | 8.0 | 20.8 | 19.8 | 6.9 | 11.8 | 1.0~3.4 | 500 |

X-ON Electronics

Largest Supplier of Electrical and Electronic Components

Click to view similar products for [Control Switches](#) category:

Click to view products by [Fix & Fasten](#) manufacturer:

Other Similar products are found below :

[76156-00](#) [80932-99](#) [86855-00](#) [HW4S-2TC10](#) [89804-08](#) [RL01801](#) [ASD2L20N-LVO](#) [50051857-17](#) [50099156-001-05](#) [V16-21D-12R-S](#) [FF3-21-AC-03](#) [ELSEC5](#) [ELSEC20](#) [SPE-8](#) [AX-380](#) [ELSEC20/10](#) [BAT-SG4](#) [14.7456M-HC49-S](#) [D/R75](#) [74611-24](#) [TMT-HA600-2](#) [79981-99](#) [81866-26](#) [86303-26](#) [CP-37-2G](#) [JBC-T05D](#) [V19-11R-12Y-S](#) [V19B-11R-12G-S](#) [V22-21R-12B-S](#) [WEL.CT5A7](#) [PL303QMD-P](#) [BCP2L](#) [81908-00](#) [87770-00](#) [601.8119.045](#) [ASD322NU](#) [ASD340NU](#) [AS6Q-2Y2P](#) [KEM425UL Y/R](#) [LB6MS-33T2V](#) [LS/VS N160](#) [LS/VS 160 3P](#) [XB4FVB3](#) [XB4FVB5](#) [XB5FVB3](#) [XB4FA61](#) [XB5FW31B5](#) [XB5FW36B5](#) [XB4FG21](#) [XB4FG41](#)