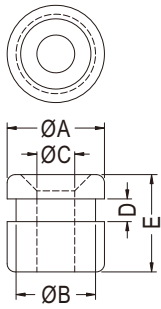
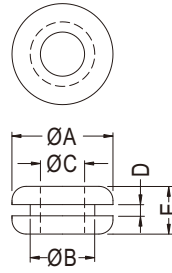


橡膠線環 GROMMET

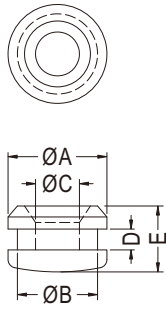
用途：用於機殼的電線出線口，保護電線不受機殼刮傷，裝配容易。



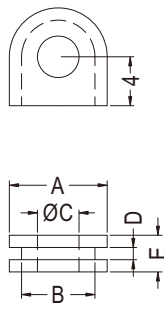
- Material: Rubber/Silicon Rubber
- Color: Black
- Unit: mm



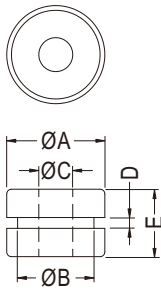
【 GM-16 】



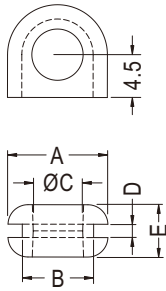
【 GM-17 】



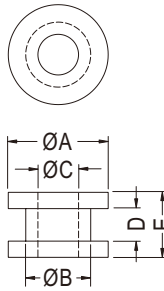
【 GM-35 】



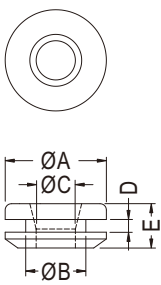
【 GM-38, GM-46 】



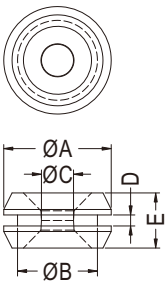
【 GM-39 】



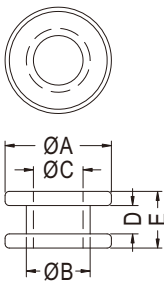
【 GM-40, GM-44, GM-55, GM-60, GM-65 】



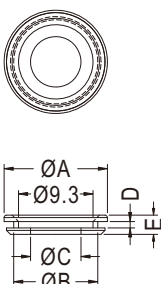
【 GM-45 】



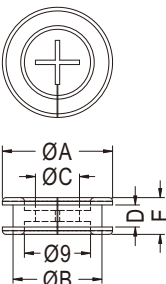
【 GM-49 】



【 GM-53 】



【 GM-64 】



【 GM-68 】

| Part No. | A | B | C | D | E | Package |
|----------|-------|-------|------|------|------|---------|
| GM-1 | 8.0 | 4.8 | 3.2 | 1.6 | 6.4 | 2000 |
| GM-1A | 9.5 | 6.4 | 4.0 | 1.6 | 6.4 | |
| GM-2 | 10.8 | 8.0 | 4.5 | 1.6 | 4.5 | |
| GM-3 | 14.4 | 9.5 | 6.3 | 1.6 | 7.0 | 1000 |
| GM-3A | 14.2 | 11.0 | 8.0 | 1.6 | 4.8 | |
| GM-4 | 17.5 | 12.7 | 9.5 | 1.6 | 6.8 | |
| GM-5 | 22.0 | 17.5 | 14.2 | 1.6 | 4.8 | 500 |
| GM-6 | 22.0 | 19.0 | 16.0 | 1.6 | 5.5 | |
| GM-6A | 25.0 | 19.5 | 18.0 | 1.6 | 6.0 | |
| GM-7 | 31.4 | 25.2 | 18.5 | 1.6 | 8.0 | 250 |
| GM-8 | 19.5 | 14.0 | 6.0 | 1.0 | 7.0 | 1000 |
| GM-9 | 15.9 | 12.7 | 9.5 | 1.6 | 6.4 | |
| GM-11 | 7.9 | 4.8 | 3.2 | 1.6 | 4.8 | |
| GM-14 | 17.46 | 11.11 | 7.94 | 2.38 | 8.73 | 500 |
| GM-15 | 10.8 | 8.0 | 5.0 | 1.6 | 4.5 | 2000 |
| GM-16 | 18.0 | 14.7 | 7.0 | 4.2 | 18.0 | 250 |
| GM-17 | 18.0 | 14.6 | 8.0 | 3.8 | 12.0 | 500 |
| GM-18 | 13.0 | 8.4 | 5.5 | 3.3 | 6.3 | 1000 |
| GM-30 | 13.3 | 9.0 | 5.8 | 2.0 | 6.2 | |
| GM-35 | 8.0 | 6.0 | 3.4 | 1.0 | 3.0 | |
| GM-38 | 10.4 | 8.1 | 3.6 | 1.15 | 7.15 | 500 |
| GM-39 | 10.5 | 7.5 | 5.2 | 1.4 | 5.5 | |
| GM-40 | 24.0 | 17.5 | 14.0 | 3.0 | 7.0 | |
| GM-42 | 27.0 | 20.8 | 12.7 | 1.6 | 7.8 | 250 |
| GM-43 | 11.0 | 7.9 | 4.7 | 1.6 | 6.0 | 1000 |
| GM-44 | 12.3 | 8.0 | 5.0 | 4.0 | 8.0 | |
| GM-45 | 16.0 | 9.5 | 6.2 | 2.0 | 7.0 | |
| GM-46 | 7.5 | 6.0 | 3.5 | 1.0 | 5.0 | |
| GM-47 | 17.5 | 13.5 | 10.0 | 2.0 | 7.0 | |
| GM-48 | 10.8 | 8.0 | 4.5 | 1.2 | 4.5 | |
| GM-49 | 7.8 | 5.8 | 2.33 | 0.8 | 4.0 | |
| GM-50 | 17.5 | 12.0 | 10.0 | 2.0 | 6.8 | |
| GM-51 | 12.0 | 9.0 | 6.5 | 1.5 | 5.5 | |
| GM-53 | 7.5 | 4.5 | 3.5 | 2.0 | 4.0 | |
| GM-55 | 7.0 | 6.0 | 3.5 | 1.0 | 5.0 | |
| GM-56 | 7.7 | 5.0 | 3.1 | 1.3 | 2.8 | |
| GM-57 | 8.8 | 6.0 | 4.1 | 2.5 | 7.0 | |
| GM-58 | 11.0 | 9.0 | 6.0 | 2.5 | 6.6 | |
| GM-60 | 7.0 | 6.0 | 3.5 | 1.0 | 3.0 | |
| GM-61 | 17.5 | 12.7 | 9.0 | 1.6 | 6.8 | 1000 |
| GM-62 | 17.5 | 12.7 | 8.6 | 1.6 | 6.8 | |
| GM-64 | 12.9 | 10.5 | 6.3 | 0.8 | 2.4 | 2000 |
| GM-65 | 24.0 | 18.0 | 14.0 | 3.0 | 7.0 | 1000 |
| GM-68 | 15.0 | 12.1 | 6.0 | 3.0 | 5.0 | |
| GM-163 | 13.5 | 9.5 | 6.3 | 1.6 | 7.0 | |

X-ON Electronics

Largest Supplier of Electrical and Electronic Components

Click to view similar products for [Control Switches](#) category:

Click to view products by [Fix & Fasten](#) manufacturer:

Other Similar products are found below :

[76156-00](#) [80932-99](#) [86855-00](#) [HW4S-2TC10](#) [89804-08](#) [RL01801](#) [ASD2L20N-LVO](#) [50051857-17](#) [50099156-001-05](#) [V16-21D-12R-S](#) [FF3-21-AC-03](#) [ELSEC5](#) [ELSEC20](#) [SPE-8](#) [AX-380](#) [ELSEC20/10](#) [BAT-SG4](#) [14.7456M-HC49-S](#) [D/R75](#) [74611-24](#) [TMT-HA600-2](#) [79981-99](#) [81866-26](#) [86303-26](#) [CP-37-2G](#) [JBC-T05D](#) [V19-11R-12Y-S](#) [V19B-11R-12G-S](#) [V22-21R-12B-S](#) [WEL.CT5A7](#) [PL303QMD-P](#) [BCP2L](#) [81908-00](#) [87770-00](#) [601.8119.045](#) [ASD322NU](#) [ASD340NU](#) [AS6Q-2Y2P](#) [KEM425UL Y/R](#) [LB6MS-33T2V](#) [LS/VS N160](#) [LS/VS 160 3P](#) [XB4FVB3](#) [XB4FVB5](#) [XB5FVB3](#) [XB4FA61](#) [XB5FW31B5](#) [XB5FW36B5](#) [XB4FG21](#) [XB4FG41](#)