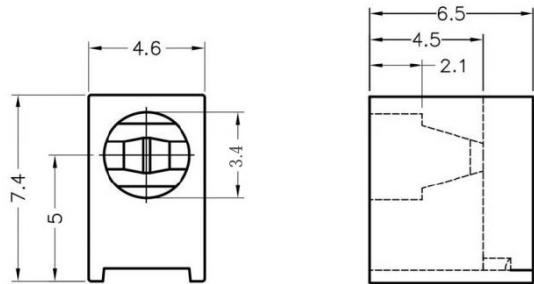
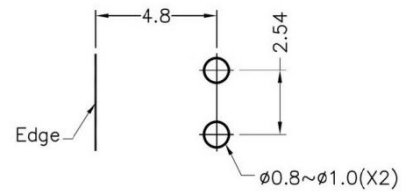


LED-301



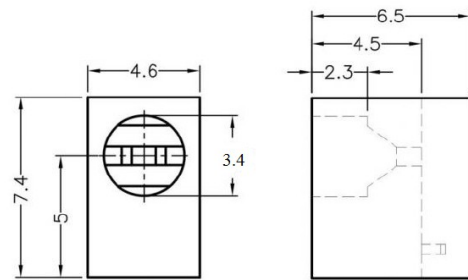
MATERIAL: NYLON 66(UL)
 FLAME CLASS: 94V-2
 COLOR:BLACK
 UNIT:mm
 RECOMMEND ASSEMBLING LED SIZE : 3
 NUMBER OF ASSEMBLING LED : 1



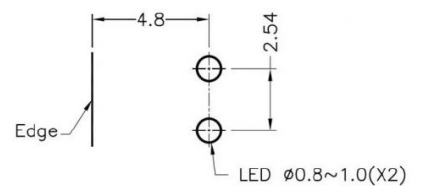
MOUNTING HOLE

To weld $\phi 3$ LED on board with 90 degrees, and same height, but avoid pins broken.

FIX-LED-301A



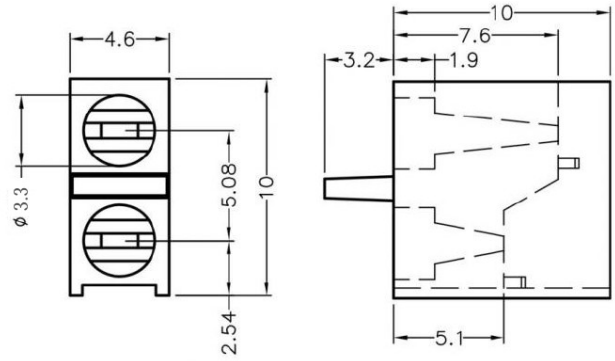
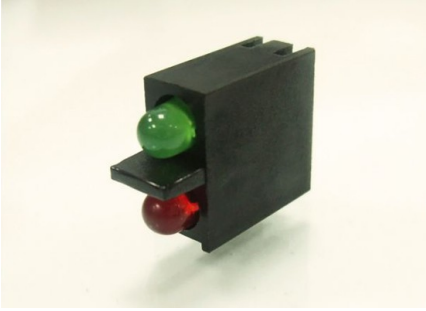
MATERIAL: NYLON 66(UL)
 FLAME CLASS: 94V-2
 COLOR:BLACK
 UNIT:mm
 RECOMMEND ASSEMBLING LED SIZE : 3
 NUMBER OF ASSEMBLING LED : 1



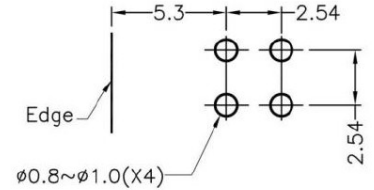
MOUNTING HOLE

To weld $\phi 3$ LED on board with 90 degrees, and same height, but avoid pins broken.

FIX-LED-305



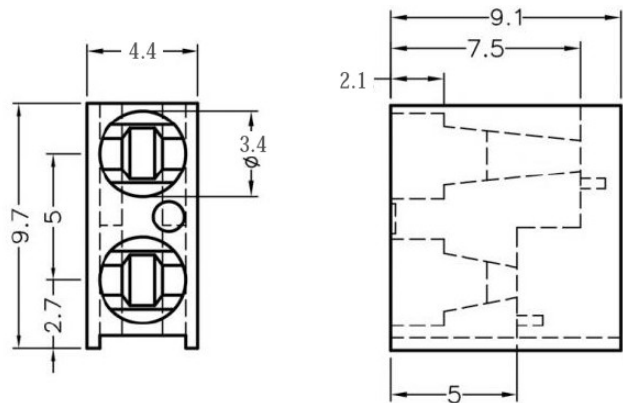
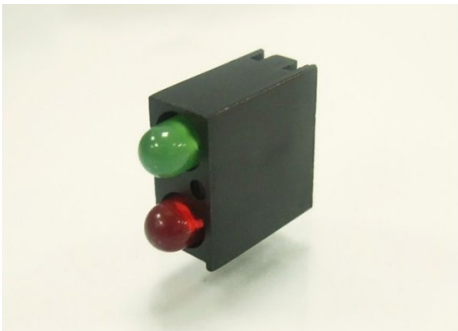
MATERIAL: NYLON 66(UL)
 FLAME CLASS: 94V-2
 COLOR:BLACK
 UNIT:mm
 RECOMMEND ASSEMBLING LED SIZE : 3
 NUMBER OF ASSEMBLING LED : 2



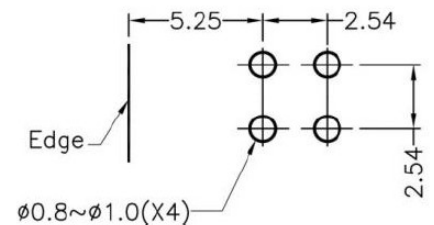
MOUNTING HOLE

To weld $\phi 3$ LED on board with 90 degrees, and same height, but avoid pins broken.

FIX-LED-306



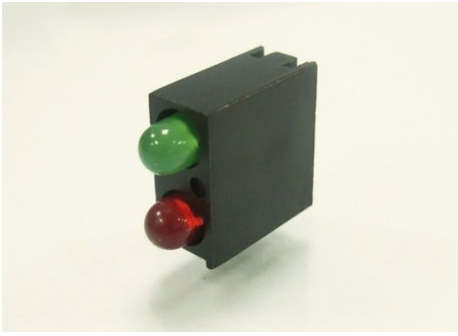
MATERIAL: NYLON 66(UL)
 FLAME CLASS: 94V-2
 COLOR:BLACK
 UNIT:mm
 RECOMMEND ASSEMBLING LED SIZE : 3
 NUMBER OF ASSEMBLING LED : 2



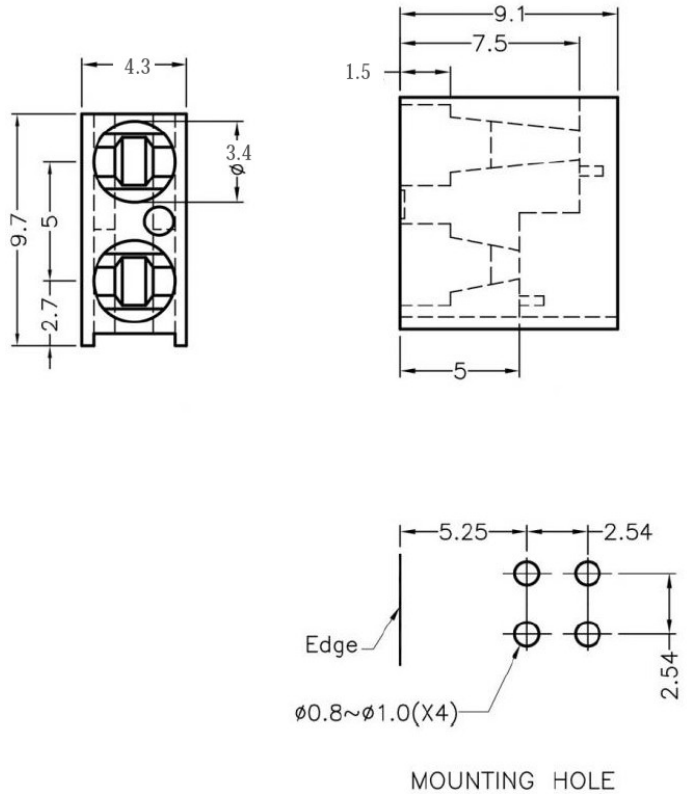
MOUNTING HOLE

To weld $\phi 3$ LED on board with 90 degrees, and same height, but avoid pins broken.

FIX-LED-306A

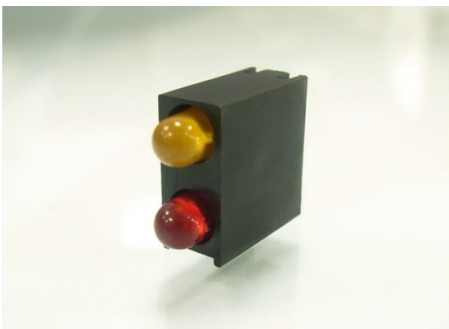


MATERIAL: NYLON 66(UL)
 FLAME CLASS: 94V-2
 COLOR:BLACK
 UNIT:mm
 RECOMMEND ASSEMBLING LED SIZE : 3
 NUMBER OF ASSEMBLING LED : 2

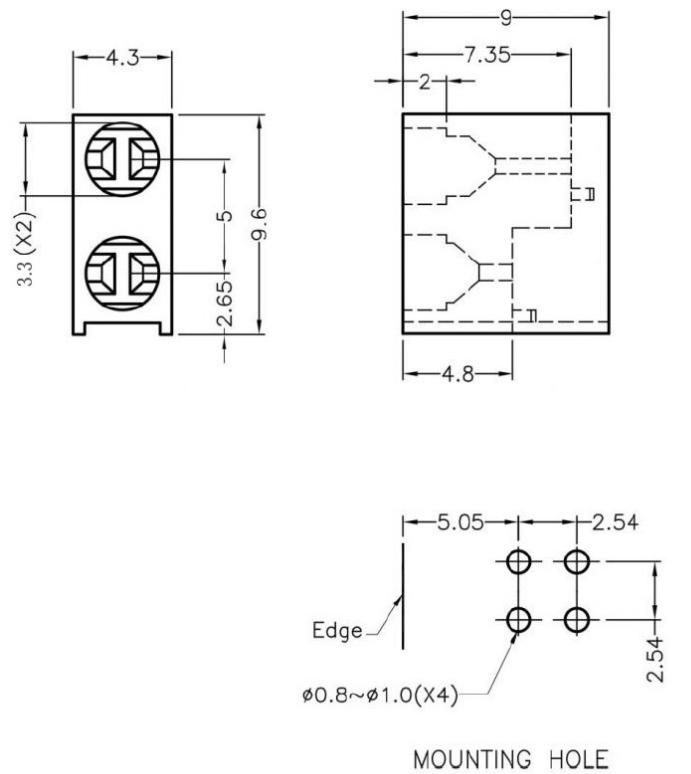


To weld $\phi 3$ LED on board with 90 degrees, and same height, but avoid pins broken.

FIX-LED-306B

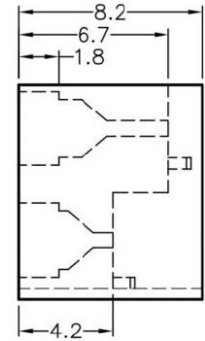
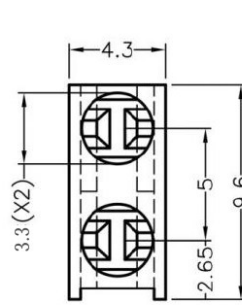
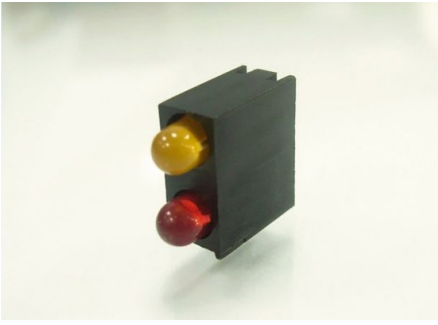


MATERIAL: NYLON 66(UL)
 FLAME CLASS: 94V-2
 COLOR:BLACK
 UNIT:mm
 RECOMMEND ASSEMBLING LED SIZE : 3
 NUMBER OF ASSEMBLING LED : 2

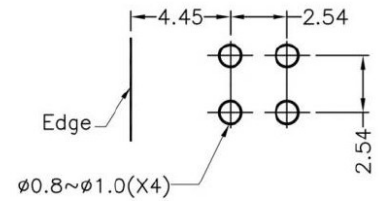


To weld $\phi 3$ LED on board with 90 degrees, and same height, but avoid pins broken.

FIX-LED-307



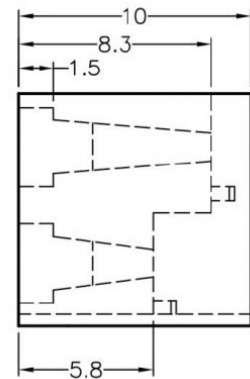
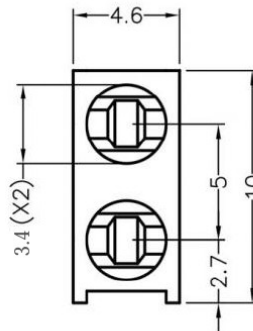
MATERIAL: NYLON 66(UL)
 FLAME CLASS: 94V-2
 COLOR:BLACK
 UNIT:mm
 RECOMMEND ASSEMBLING LED SIZE : 3
 NUMBER OF ASSEMBLING LED : 2



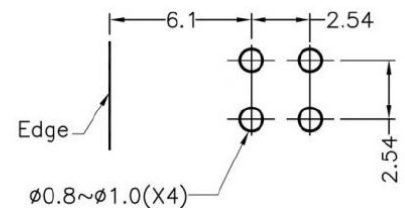
MOUNTING HOLE

To weld $\phi 3$ LED on board with 90 degrees, and same height, but avoid pins broken.

FIX-LED-308



MATERIAL: NYLON 66(UL)
 FLAME CLASS: 94V-2
 COLOR:BLACK
 UNIT:mm
 RECOMMEND ASSEMBLING LED SIZE : 3
 NUMBER OF ASSEMBLING LED : 2



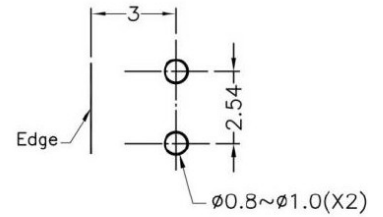
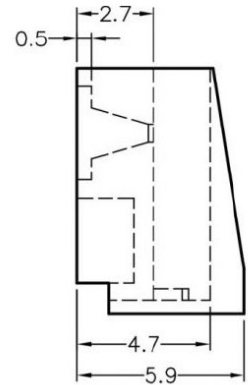
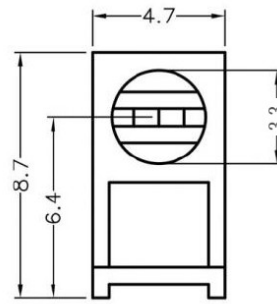
MOUNTING HOLE

To weld $\phi 3$ LED on board with 90 degrees, and same height, but avoid pins broken.

FIX-LED-312



MATERIAL: NYLON 66(UL)
 FLAME CLASS: 94V-2
 COLOR:BLACK
 UNIT:mm
 RECOMMEND ASSEMBLING LED SIZE : 3
 NUMBER OF ASSEMBLING LED : 1



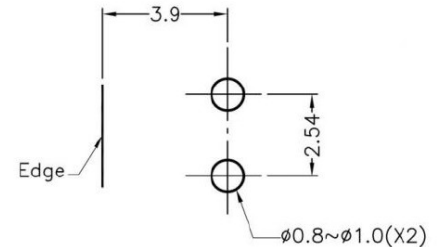
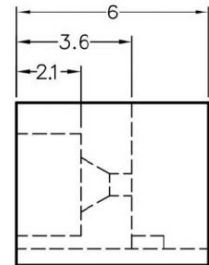
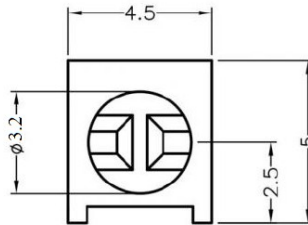
MOUNTING HOLE

To weld $\phi 3$ LED on board with 90 degrees, and same height, but avoid pins broken.

FIX-LED-313



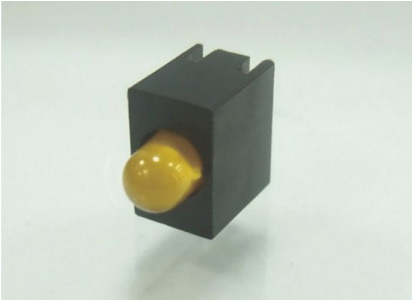
MATERIAL: NYLON 66(UL)
 FLAME CLASS: 94V-2
 COLOR:BLACK
 UNIT:mm
 RECOMMEND ASSEMBLING LED SIZE : 3
 NUMBER OF ASSEMBLING LED : 1



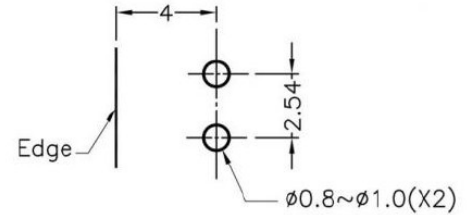
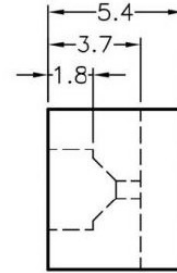
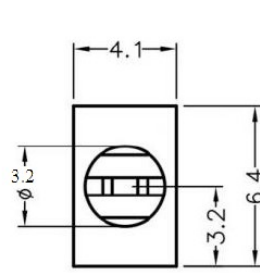
MOUNTING HOLE

To weld $\phi 3$ LED on board with 90 degrees, and same height, but avoid pins broken.

FIX-LED-314



MATERIAL: NYLON 66(UL)
 FLAME CLASS: 94V-2
 COLOR:BLACK
 UNIT:mm
 RECOMMEND ASSEMBLING LED SIZE : 3
 NUMBER OF ASSEMBLING LED : 1



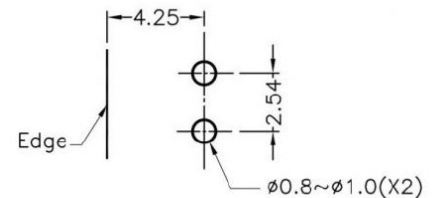
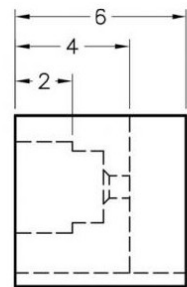
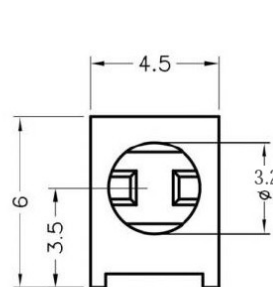
MOUNTING HOLES

To weld $\phi 3$ LED on board with 90 degrees, and same height, but avoid pins broken.

FIX-LED-316



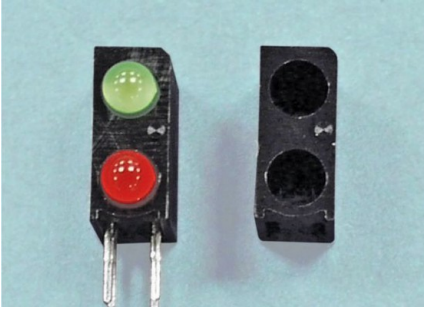
MATERIAL: NYLON 66(UL)
 FLAME CLASS: 94V-2
 COLOR:BLACK
 UNIT:mm
 RECOMMEND ASSEMBLING LED SIZE : 3
 NUMBER OF ASSEMBLING LED : 1



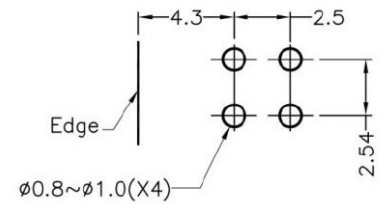
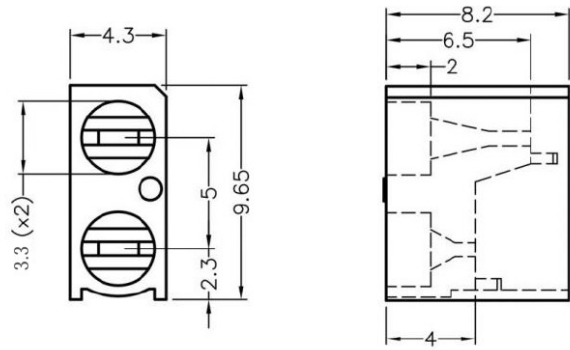
MOUNTING HOLES

To weld $\phi 3$ LED on board with 90 degrees, and same height, but avoid pins broken.

FIX-LED-322



MATERIAL: NYLON 66(UL)
 FLAME CLASS: 94V-2
 COLOR:BLACK
 UNIT:mm
 RECOMMEND ASSEMBLING LED SIZE : 3
 NUMBER OF ASSEMBLING LED : 2



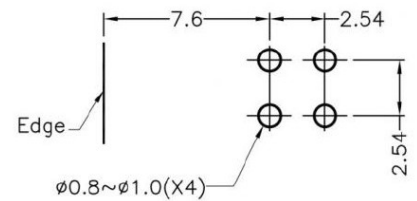
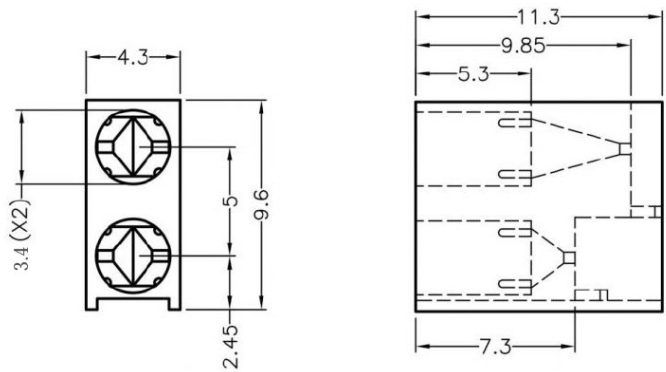
MOUNTING HOLE

To weld $\phi 3$ LED on board with 90 degrees, and same height, but avoid pins broken.

FIX-LED-323



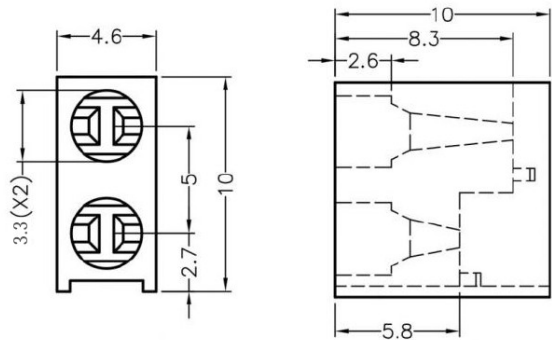
MATERIAL: NYLON 66(UL)
 FLAME CLASS: 94V-2
 COLOR:BLACK
 UNIT:mm
 RECOMMEND ASSEMBLING LED SIZE : 3
 NUMBER OF ASSEMBLING LED : 2



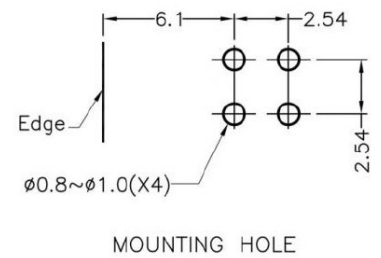
MOUNTING HOLE

To weld $\phi 3$ LED on board with 90 degrees, and same height, but avoid pins broken.

FIX-LED-324

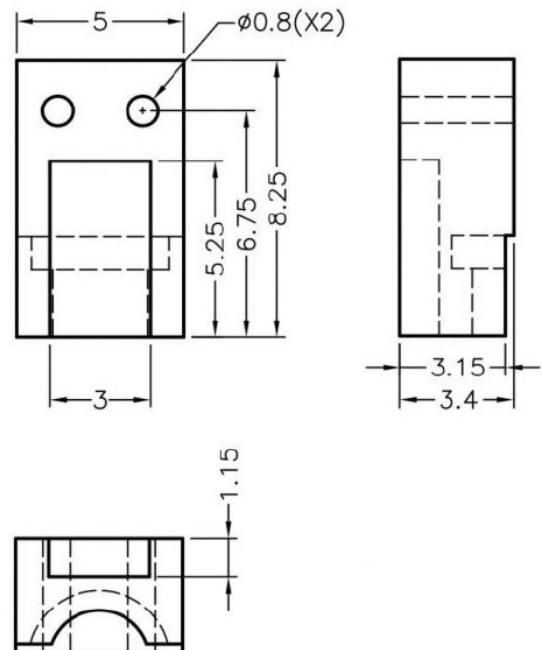


MATERIAL: NYLON 66(UL)
 FLAME CLASS: 94V-2
 COLOR:BLACK
 UNIT:mm
 RECOMMEND ASSEMBLING LED SIZE : 3
 NUMBER OF ASSEMBLING LED : 2



To weld $\phi 3$ LED on board with 90 degrees, and same height, but avoid pins broken.

FIX-LED-325



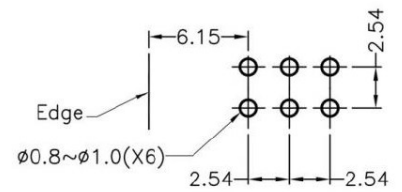
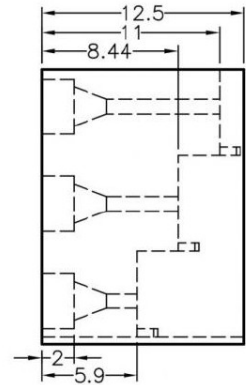
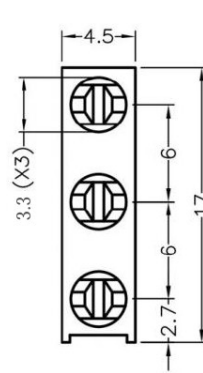
MATERIAL: NYLON 66(UL)
 FLAME CLASS: 94V-2
 COLOR:BLACK
 UNIT:mm
 RECOMMEND ASSEMBLING LED SIZE : 3
 NUMBER OF ASSEMBLING LED : 1

To weld $\phi 3$ LED on board with 90 degrees, and same height, but avoid pins broken.

FIX-LED-330



MATERIAL: NYLON 66(UL)
 FLAME CLASS: 94V-2
 COLOR:BLACK
 UNIT:mm
 RECOMMEND ASSEMBLING LED SIZE : 3
 NUMBER OF ASSEMBLING LED : 3



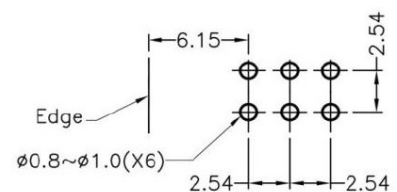
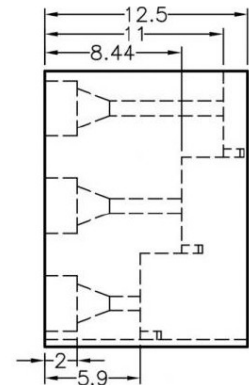
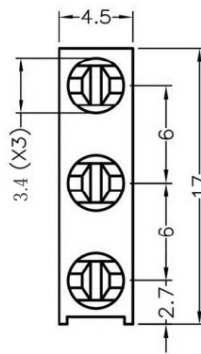
MOUNTING HOLE

To weld $\phi 3$ LED on board with 90 degrees, and same height, but avoid pins broken.

FIX-LED-331



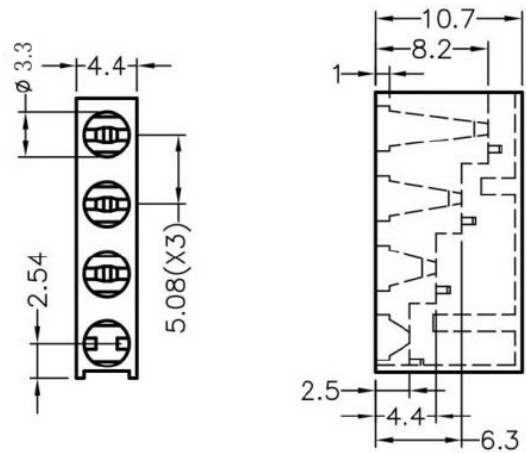
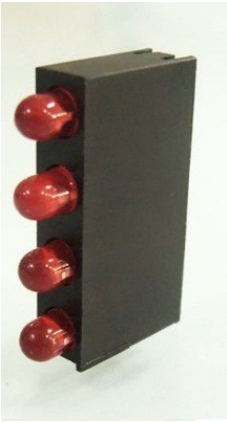
MATERIAL: NYLON 66(UL)
 FLAME CLASS: 94V-2
 COLOR:BLACK
 UNIT:mm
 RECOMMEND ASSEMBLING LED SIZE : 3
 NUMBER OF ASSEMBLING LED : 3



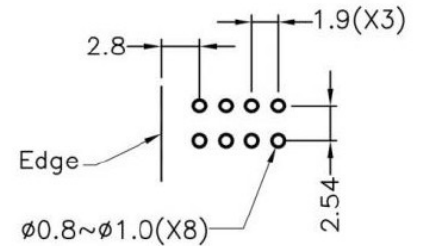
MOUNTING HOLE

To weld $\phi 3$ LED on board with 90 degrees, and same height, but avoid pins broken.

FIX-LED-340



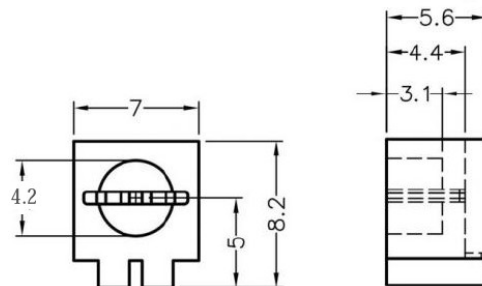
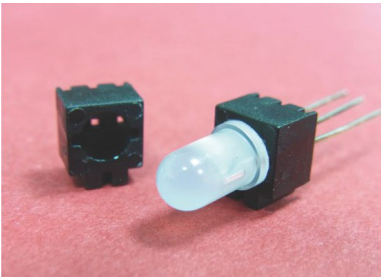
MATERIAL: NYLON 66(UL)
 FLAME CLASS: 94V-2
 COLOR:BLACK
 UNIT:mm
 RECOMMEND ASSEMBLING LED SIZE : 3
 NUMBER OF ASSEMBLING LED : 4



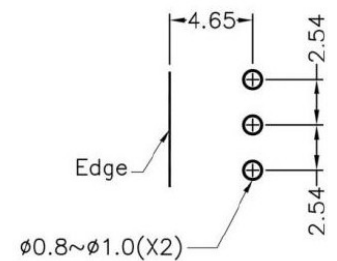
MOUNTING HOLE

To weld $\phi 3$ LED on board with 90 degrees, and same height, but avoid pins broken.

FIX-LED-319



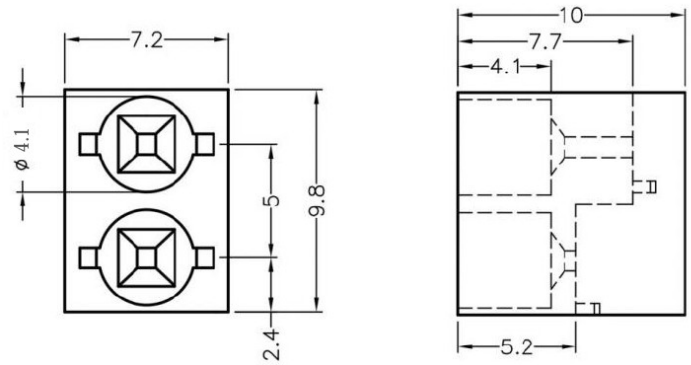
MATERIAL: NYLON 66(UL)
 FLAME CLASS: 94V-2
 COLOR:BLACK
 UNIT:mm
 RECOMMEND ASSEMBLING LED SIZE : 3
 NUMBER OF ASSEMBLING LED : 1



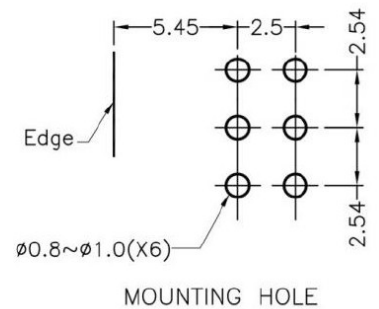
MOUNTING HOLE

To weld $\phi 3$ 3PIN LED on board with 90 degrees, and same height, but avoid pins broken.

FIX-LED-310

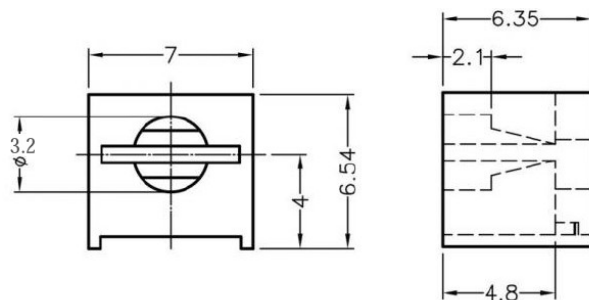
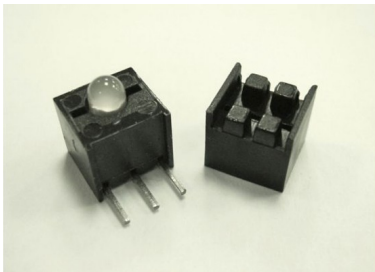


MATERIAL: NYLON 66(UL)
 FLAME CLASS: 94V-2
 COLOR:BLACK
 UNIT:mm
 RECOMMEND ASSEMBLING LED SIZE : 3
 NUMBER OF ASSEMBLING LED : 2

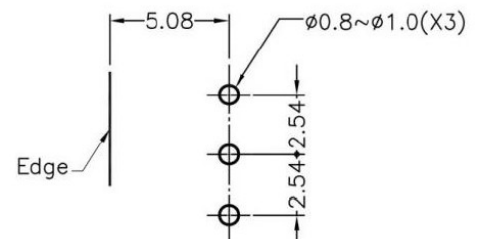


To weld $\phi 3$ 3PIN LED on board with 90 degrees, and same height, but avoid pins broken.

FIX-LED-343



MATERIAL: NYLON 66(UL)
 FLAME CLASS: 94V-2
 COLOR:BLACK
 UNIT:mm
 RECOMMEND ASSEMBLING LED SIZE : 3
 NUMBER OF ASSEMBLING LED : 1



To weld $\phi 3$ 3PIN LED on board with 90 degrees, and same height, but avoid pins broken.

X-ON Electronics

Largest Supplier of Electrical and Electronic Components

Click to view similar products for [Fix & Fasten](#) manufacturer:

Other Similar products are found below :

[4-5](#) [4-6](#) [8G820V40895](#) [BCG-250](#) [BUB-72H](#) [CC-1S](#) [CC-2](#) [CC-4](#) [CC-5](#) [CC-6](#) [CC-7S](#) [CGLA-4](#) [CGLA-4S](#) [CGLA-6](#) [CGLA-8](#) [CM-19S](#) [CM-28](#) [CRS-7045-M5-20](#) [F8040](#) [F8040UL](#) [FCA-1](#) [FCA-2](#) [FCA-5](#) [FF-1](#) [FF-11](#) [FF-12](#) [FF-14](#) [FF-2](#) [FF-3](#) [FF-35](#) [FF-6](#) [FF-8](#) [FIX-2-2](#) [FIX-2-3](#) [FIX-2-5](#) [FIX-3.0X23-PRO](#) [FIX-3.0X23-WH](#) [FIX-3-12](#) [FIX-3-14](#) [FIX-3-15](#) [FIX-3-18](#) [FIX-3-2](#) [FIX-3-20](#) [FIX-3-2.5](#) [FIX-3-25](#) [FIX-3-3](#) [FIX-3-30](#) [FIX-3-3.5](#) [FIX-3-4](#) [FIX-3-5](#)