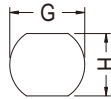
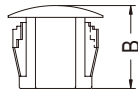
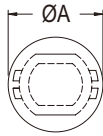


扣式塞頭 HOLE PLUG

用途：可將多餘的電源線扣機殼出線口遮蓋，裝配容易。

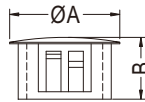
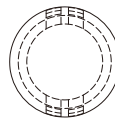


- Material: Nylon 66 (UL)
- Flame Class: 94V-2/94V-0
- Color: Natural/Black
- Unit: mm

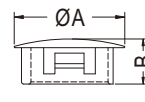
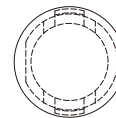


MOUNTING HOLE THICKNESS: T

Part No.	A	B	G	H	T	Package	UL
M9.5U	12.0	10.5	9.5	7.9	0.8~3.5	1000	UL
M11U	14.5	10.6	11.0	9.9	3.3		UL
M12U	16.2	10.6	12.7	11.5	0.8~3.0	500	UL
M14U	17.8	10.6	14.3	13.4	3.3		UL
M16U	18.6	10.6	15.9	14.0	0.8~3.5		UL
M19U	22.7	10.6	19.0	16.5	0.8~3.0		UL
M22U	25.6	10.6	22.1	20.5	0.8~3.3		UL



MOUNTING HOLE: ØG
THICKNESS: T



MOUNTING HOLE: ØG
THICKNESS: T

【 M13.5 】



Part No.	A	B	G	T	Package	UL
M04	6.35	5.5	4.8	1.6	2000	UL
M05	6.4	6.0	5.0	0.6~2.0		UL
M06	7.6	5.6	6.4	1.6		UL
M07	10.9	7.0	7.0	0.8~1.8		UL
M07S	8.7	6.4	7.0	1.8	1000	UL
M08	9.5	7.6	8.0	1.6		UL
M09A	11.5	10.1	9.0	3.3		UL
M09S	13.0	5.5	9.5	1.4		UL
M09	11.9	10.1	9.5	3.3	500	UL
M10	11.9	6.4	10.3	1.6		UL
M11	14.0	10.1	11.0	3.3		UL
M12	14.3	10.1	12.0	3.3		UL
M13	14.6	10.1	12.7	3.3		UL
M13.5	15.2	6.2	13.5	2.2		UL
M14	16.3	10.1	14.0	3.3		UL
M15	17.3	10.1	15.0	3.3		UL
M16	18.7	10.6	16.0	3.3	UL	

Part No.	A	B	G	T	Package	UL
M16S	20.0	7.7	15.9	2.0	1000	UL
M17	19.3	10.1	17.0	3.3	500	UL
M19	23.2	10.3	19.0	3.3		UL
M20	24.0	10.6	20.0	3.3	200	UL
M22	25.4	11.0	22.2	3.3		UL
M25	28.4	11.0	25.4	3.3		UL
M28	32.0	13.5	28.0	3.3		UL
M30	34.2	11.3	30.0	3.3		UL
M30L	34.0	11.8	30.1	0.8~3.2		UL
M32	36.0	12.0	32.0	3.3		UL
M35	38.1	11.5	35.0	3.2		UL
M38	42.4	11.8	38.1	3.2		UL
M44	48.4	11.8	44.5	3.2		UL
M50	56.4	17.0	50.8	6.4	UL	
M53	57.5	19.0	53.0	0.8~6.5	100	UL
M63	71.2	19.1	63.5	0.8~6.4	200	UL

X-ON Electronics

Largest Supplier of Electrical and Electronic Components

Click to view similar products for [Control Switches](#) category:

Click to view products by [Fix & Fasten](#) manufacturer:

Other Similar products are found below :

[76156-00](#) [80932-99](#) [86855-00](#) [HW4S-2TC10](#) [89804-08](#) [RL01801](#) [ASD2L20N-LVO](#) [50051857-17](#) [50099156-001-05](#) [V16-21D-12R-S](#) [FF3-21-AC-03](#) [ELSEC5](#) [ELSEC20](#) [SPE-8](#) [AX-380](#) [ELSEC20/10](#) [BAT-SG4](#) [14.7456M-HC49-S](#) [D/R75](#) [74611-24](#) [TMT-HA600-2](#) [79981-99](#) [81866-26](#) [86303-26](#) [CP-37-2G](#) [JBC-T05D](#) [V19-11R-12Y-S](#) [V19B-11R-12G-S](#) [V22-21R-12B-S](#) [WEL.CT5A7](#) [PL303QMD-P](#) [BCP2L](#) [81908-00](#) [87770-00](#) [601.8119.045](#) [ASD322NU](#) [ASD340NU](#) [AS6Q-2Y2P](#) [KEM425UL Y/R](#) [LB6MS-33T2V](#) [LS/VS N160](#) [LS/VS 160 3P](#) [XB4FVB3](#) [XB4FVB5](#) [XB5FVB3](#) [XB4FA61](#) [XB5FW31B5](#) [XB5FW36B5](#) [XB4FG21](#) [XB4FG41](#)