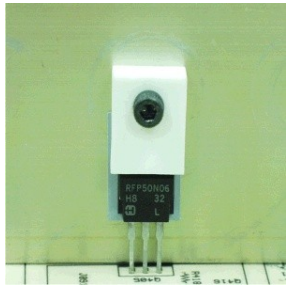
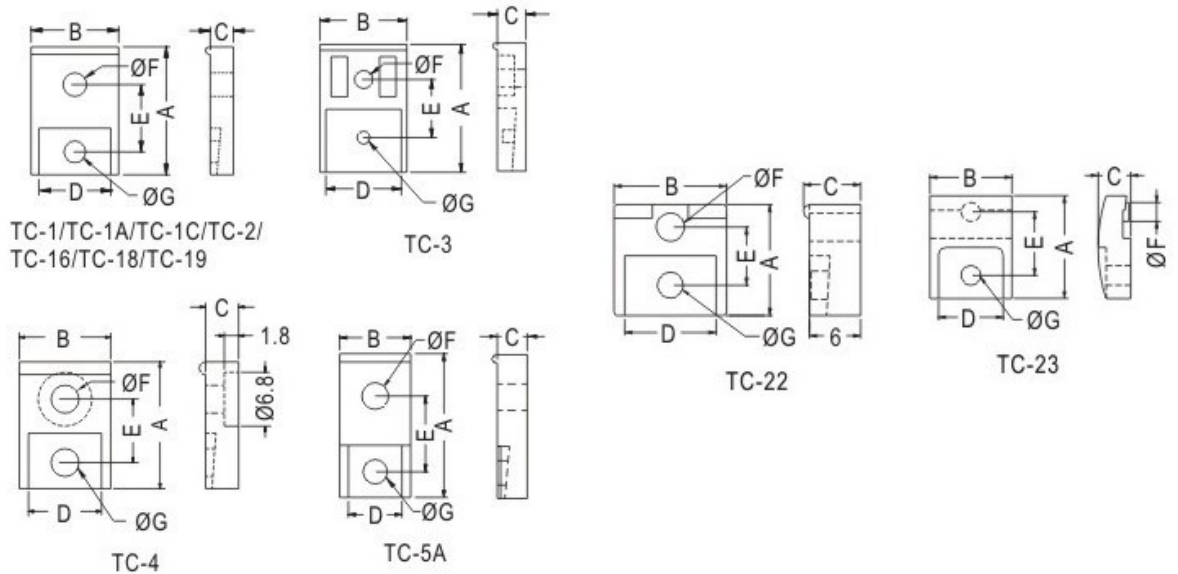


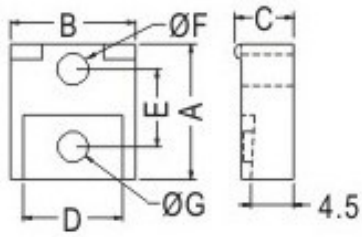
# FIX-TC



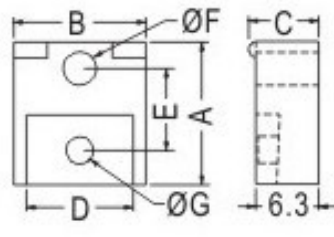
- ◆ MATERIAL: NYLON 66(UL)
- ◆ FLAME CLASS: 94V-2
- ◆ COLOR: NATURAL
- ◆ UNIT: mm



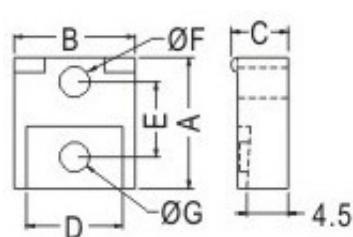
PART NO	A	B	C	D	E	F	G	APPLICATION
FIX-TC-1	16.0	13.0	5.4	10.7	8.0	3.5	3.4	TO220
FIX-TC-1A	19.3	13.0	5.4	10.7	10.0	3.6	3.4	TO220
FIX-TC-1C	17.8	13.0	5.5	10.7	9.3	3.5	3.3	TO220
FIX-TC-2	19.0	18.0	6.0	16.0	10.5	3.5	3.5	TO218
FIX-TC-3	28.0	19.0	8.0	16.5	12.8	3.9	2.8	TO3P
FIX-TC-4	16.0	13.0	5.4	10.7	8.0	3.5	3.5	TO220
FIX-TC-5A	16.0	13.0	5.5	10.5	8.0	3.5	3.5	TO220
FIX-TC-6	13.0	13.2	6.2	10.7	6.8	3.3	3.3	TO220
FIX-TC-7	13.0	13.2	7.0	10.7	6.8	3.3	3.0	TO220
FIX-TC-8	20.0	25.4	7.0	10.7	6.8	3.3	-	-
FIX-TC-9	23.0	12.9	8.3	10.8	9.3	3.5	2.8	TO220
FIX-TC-10	14.3	13.2	6.2	10.5	8.2	3.3	3.2	TO220
FIX-TC-11	14.3	13.2	7.0	10.7	8.2	3.3	2.7	TO220
FIX-TC-13	14.3	13.2	4.2	-	8.1	3.3	3.5	-
FIX-TC-16	22.5	13.0	5.5	10.5	15.0	3.5	3.5	-
FIX-TC-18	16.0	13.0	5.4	10.7	8.0	3.5	3.5	TO220
FIX-TC-19	30.0	18.0	6.0	15.7	17.0	3.6	2.8	-
FIX-TC-20	17.7	12.1	5.6	-	10.0	3.8	3.5	-
FIX-TC-22	13.0	13.2	6.7	10.7	7.1	3.3	2.8	TO220
FIX-TC-23	19.1	15.2	6.1	12.0	11.8	3.5	3.6	-



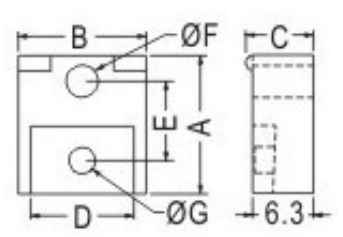
TC-10



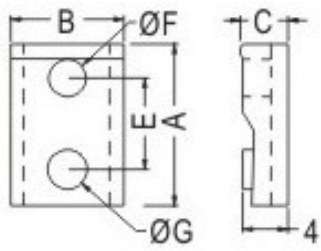
TC-11



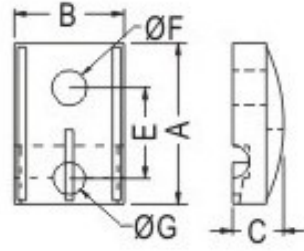
TC-10



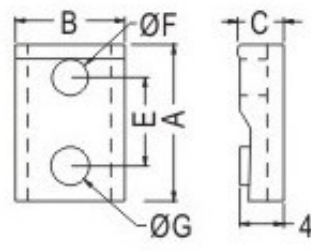
TC-11



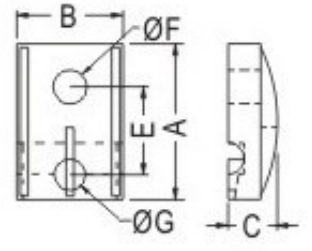
TC-13



TC-20



TC-13



TC-20

## X-ON Electronics

Largest Supplier of Electrical and Electronic Components

*Click to view similar products for [Control Switches](#) category:*

*Click to view products by [Fix & Fasten](#) manufacturer:*

Other Similar products are found below :

[80887-99](#) [80932-99](#) [86855-00](#) [88814-30](#) [1424293-1](#) [HW4S-2TC10](#) [89721-12](#) [89804-08](#) [SSN](#) [RL01801](#) [ASD2L20N-LVO](#) [50051857-17](#)  
[50099156-001-05](#) [51.155R-15200](#) [50058920-26](#) [CP-FA51](#) [CP-FA49](#) [ACCU-SC/L-3000](#) [PP9M](#) [PP87G](#) [PP86GA](#) [PP71G](#) [PP70G](#) [PP6G](#)  
[PP62G](#) [PP58BL](#) [PP56G](#) [PP86GB](#) [PP77GA](#) [PP76G](#) [PP4M](#) [PP47G](#) [PP46G](#) [PP41M](#) [PP40G](#) [PP32G](#) [RD-20](#) [PP23M](#) [PP12G](#) [PORTAPRO](#)  
[POM-2708](#) [PNB-2005](#) [3057.0012](#) [CV-075](#) [CV-140SB](#) [CV-150](#) [CV-150S](#) [214X20XK](#) [CV-180](#) [CV-200MB](#)