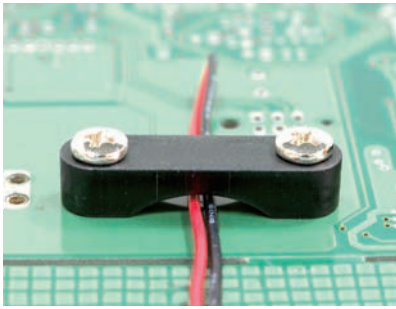
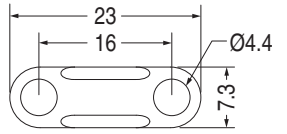


電線固定扣 CABLE CLAMP

用途：使用螺絲將電線固定於機器中，固定電線不易鬆動。

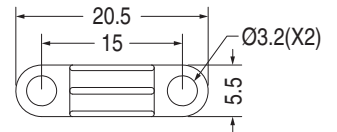


- Material: Nylon 66 (UL)
- Flame Class: 94V-2/94V-0
- Color: Natural/Black
- Unit: mm



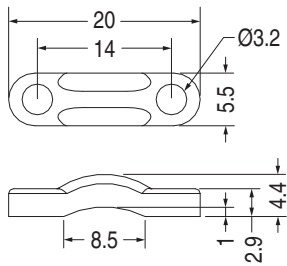
- Flame Class: 94HB
- Color: Black

Part No.	Package
CLT-4	1000

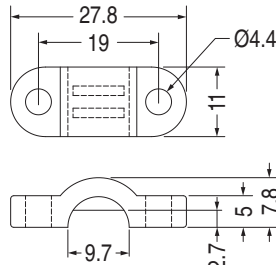


- Material: Nylon 6 (UL)
- Flame Class: 94V-2
- Color: Natural

Part No.	Package
CLT-19	1000

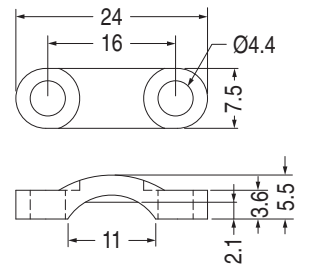


Part No.	Package
CLT-2	500



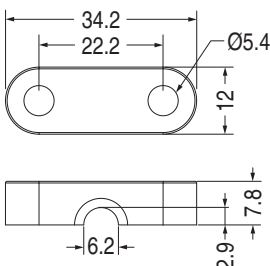
- Material: Nylon 66 (UL)/ABS (UL)/PC+ABS (UL)
- Flame Class: 94HB/94V-2/94V-0

Part No.	Package
CLT-1	500



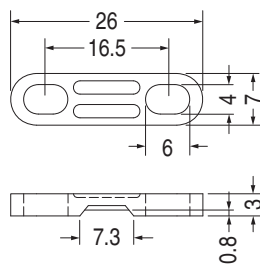
- Flame Class: 94HB
- Color: Black

Part No.	Package
CLT-5	1000



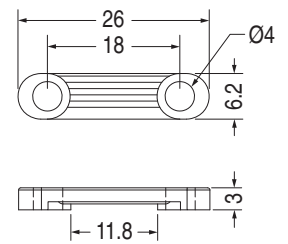
- Material: ABS (UL)
- Flame Class: 94HB
- Color: Black

Part No.	Package
CLT-8	1000



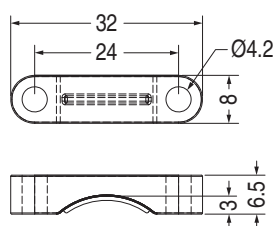
- Flame Class: 94HB
- Color: Black

Part No.	Package
CLT-6	1000

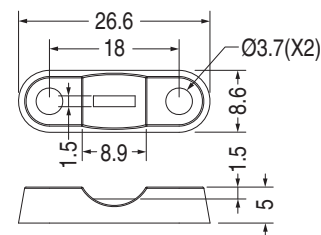


- Material: PBT (UL)
- Flame Class: 94V-0
- Color: Natural

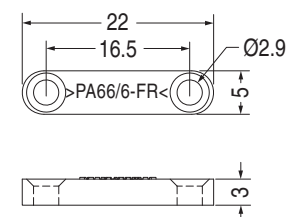
Part No.	Package
CLT-18	500



Part No.	Package
CLT-14	1000



Part No.	Package
CLT-20	1000



Part No.	Package
CLT-10	1000

X-ON Electronics

Largest Supplier of Electrical and Electronic Components

Click to view similar products for [Fix & Fasten](#) manufacturer:

Other Similar products are found below :

[4-5](#) [4-6](#) [8G820V40895](#) [BCG-250](#) [BUB-72H](#) [CC-1S](#) [CC-2](#) [CC-4](#) [CC-5](#) [CC-6](#) [CC-7S](#) [CGLA-4](#) [CGLA-4S](#) [CGLA-6](#) [CGLA-8](#) [CM-19S](#) [CM-28](#) [CRS-7045-M5-20](#) [F8040](#) [F8040UL](#) [FCA-1](#) [FCA-2](#) [FCA-5](#) [FF-1](#) [FF-11](#) [FF-12](#) [FF-14](#) [FF-2](#) [FF-3](#) [FF-35](#) [FF-6](#) [FF-8](#) [FIX-2-2](#) [FIX-2-3](#) [FIX-2-5](#) [FIX-3.0X23-PRO](#) [FIX-3.0X23-WH](#) [FIX-3-12](#) [FIX-3-14](#) [FIX-3-15](#) [FIX-3-18](#) [FIX-3-2](#) [FIX-3-20](#) [FIX-3-2.5](#) [FIX-3-25](#) [FIX-3-3](#) [FIX-3-30](#) [FIX-3-3.5](#) [FIX-3-4](#) [FIX-3-5](#)