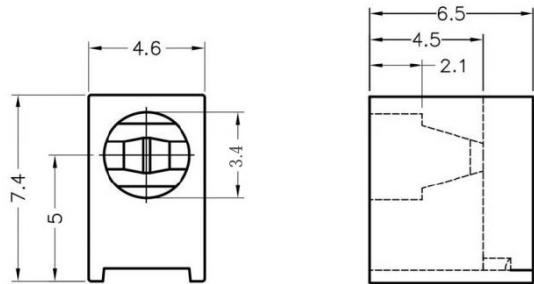
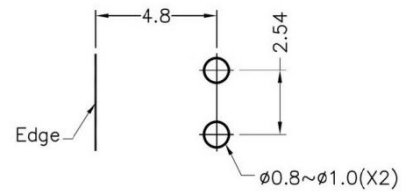


## LED-301



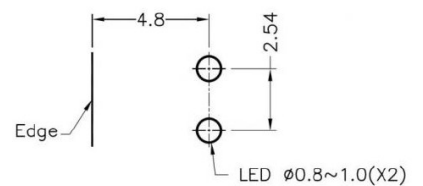
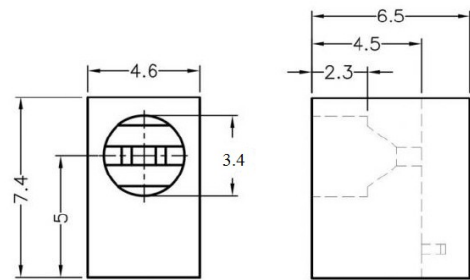
MATERIAL: NYLON 66(UL)  
 FLAME CLASS: 94V-2  
 COLOR:BLACK  
 UNIT:mm  
 RECOMMEND ASSEMBLING LED SIZE : 3  
 NUMBER OF ASSEMBLING LED : 1



MOUNTING HOLE

To weld  $\phi 3$  LED on board with 90 degrees, and same height, but avoid pins broken.

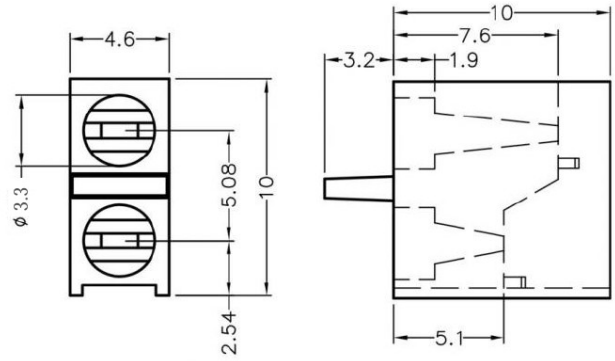
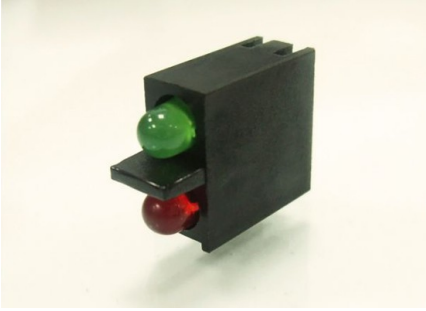
## FIX-LED-301A



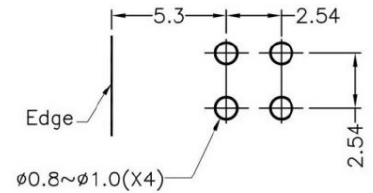
MOUNTING HOLE

To weld  $\phi 3$  LED on board with 90 degrees, and same height, but avoid pins broken.

## FIX-LED-305



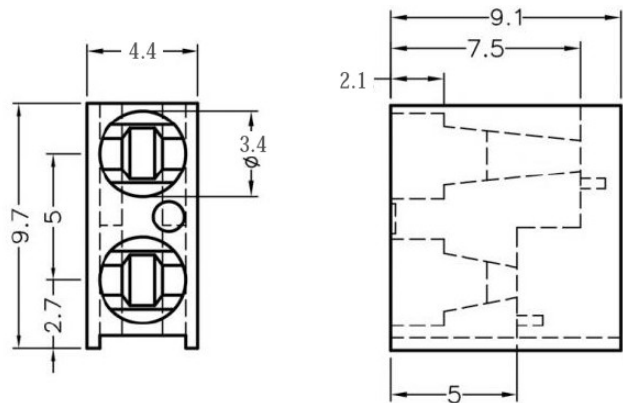
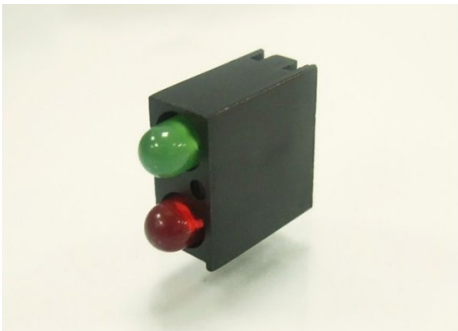
MATERIAL: NYLON 66(UL)  
 FLAME CLASS: 94V-2  
 COLOR:BLACK  
 UNIT:mm  
 RECOMMEND ASSEMBLING LED SIZE : 3  
 NUMBER OF ASSEMBLING LED : 2



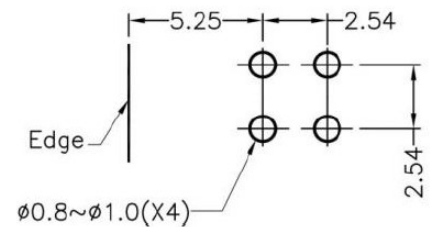
MOUNTING HOLE

To weld  $\phi 3$  LED on board with 90 degrees, and same height, but avoid pins broken.

## FIX-LED-306



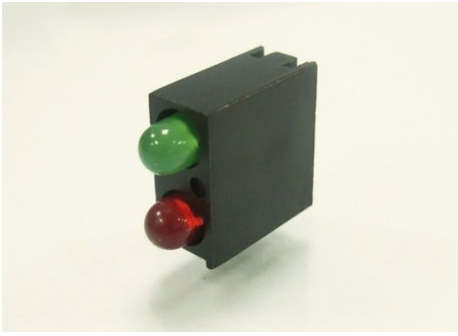
MATERIAL: NYLON 66(UL)  
 FLAME CLASS: 94V-2  
 COLOR:BLACK  
 UNIT:mm  
 RECOMMEND ASSEMBLING LED SIZE : 3  
 NUMBER OF ASSEMBLING LED : 2



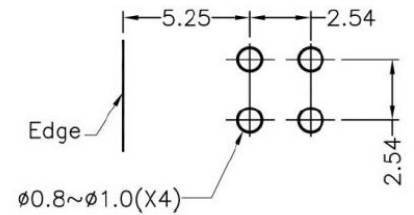
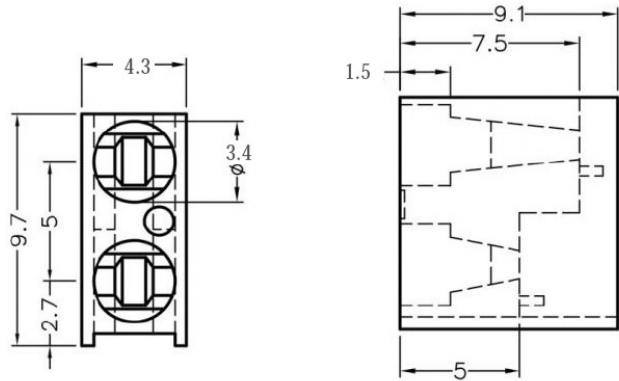
MOUNTING HOLE

To weld  $\phi 3$  LED on board with 90 degrees, and same height, but avoid pins broken.

## FIX-LED-306A



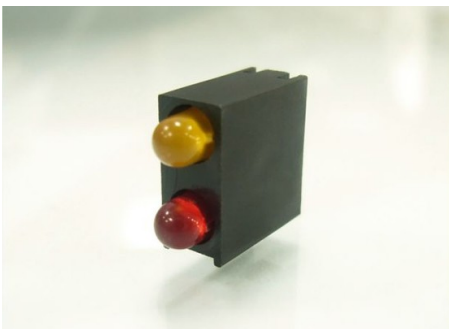
MATERIAL: NYLON 66(UL)  
 FLAME CLASS: 94V-2  
 COLOR:BLACK  
 UNIT:mm  
 RECOMMEND ASSEMBLING LED SIZE : 3  
 NUMBER OF ASSEMBLING LED : 2



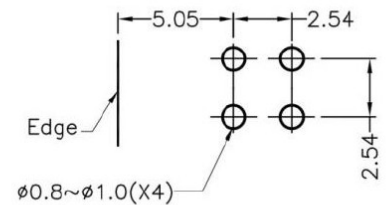
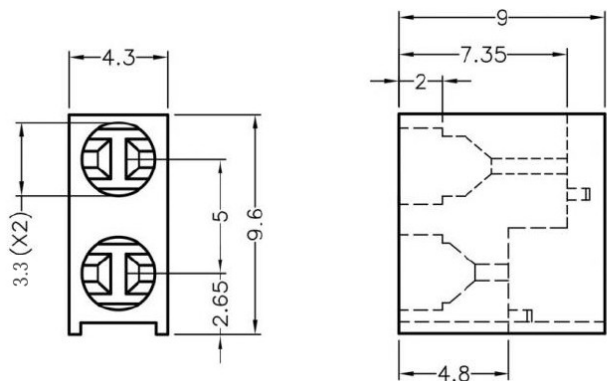
MOUNTING HOLE

To weld  $\phi 3$  LED on board with 90 degrees, and same height, but avoid pins broken.

## FIX-LED-306B



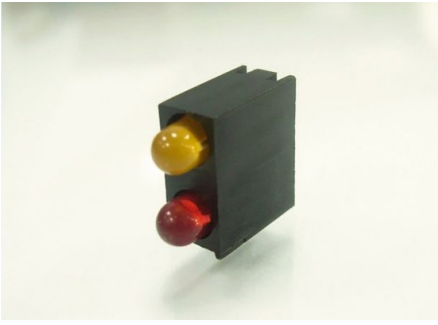
MATERIAL: NYLON 66(UL)  
 FLAME CLASS: 94V-2  
 COLOR:BLACK  
 UNIT:mm  
 RECOMMEND ASSEMBLING LED SIZE : 3  
 NUMBER OF ASSEMBLING LED : 2



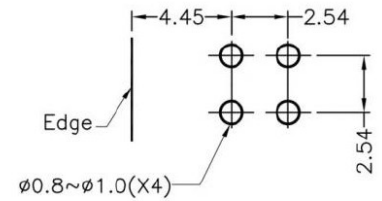
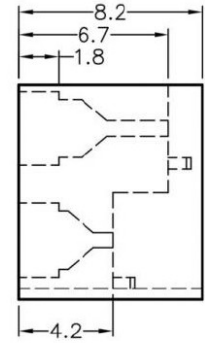
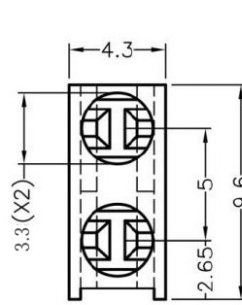
MOUNTING HOLE

To weld  $\phi 3$  LED on board with 90 degrees, and same height, but avoid pins broken.

## FIX-LED-307



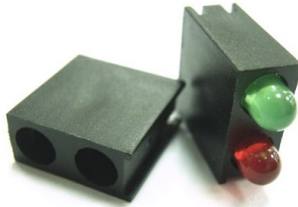
MATERIAL: NYLON 66(UL)  
 FLAME CLASS: 94V-2  
 COLOR:BLACK  
 UNIT:mm  
 RECOMMEND ASSEMBLING LED SIZE : 3  
 NUMBER OF ASSEMBLING LED : 2



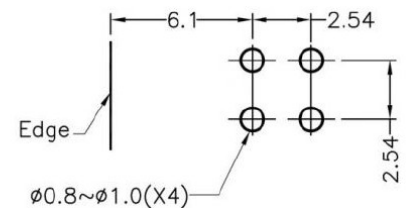
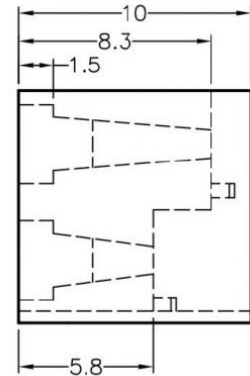
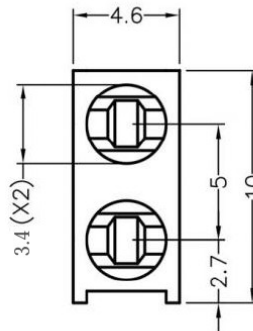
MOUNTING HOLE

To weld  $\phi 3$  LED on board with 90 degrees, and same height, but avoid pins broken.

## FIX-LED-308



MATERIAL: NYLON 66(UL)  
 FLAME CLASS: 94V-2  
 COLOR:BLACK  
 UNIT:mm  
 RECOMMEND ASSEMBLING LED SIZE : 3  
 NUMBER OF ASSEMBLING LED : 2



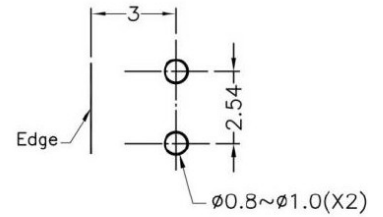
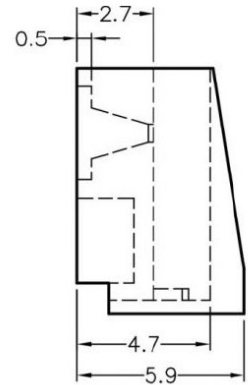
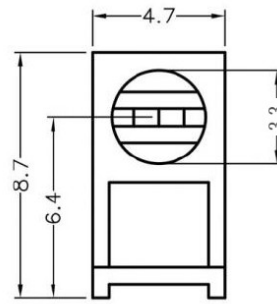
MOUNTING HOLE

To weld  $\phi 3$  LED on board with 90 degrees, and same height, but avoid pins broken.

## FIX-LED-312



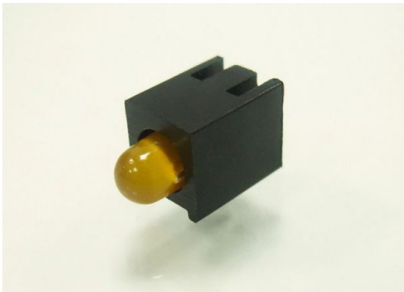
MATERIAL: NYLON 66(UL)  
 FLAME CLASS: 94V-2  
 COLOR:BLACK  
 UNIT:mm  
 RECOMMEND ASSEMBLING LED SIZE : 3  
 NUMBER OF ASSEMBLING LED : 1



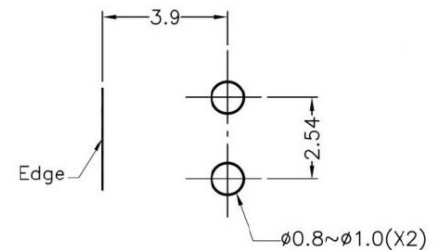
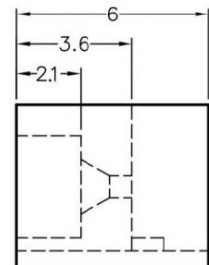
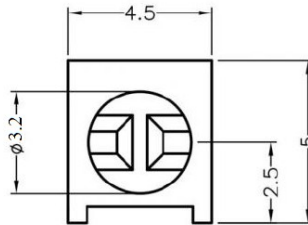
MOUNTING HOLE

To weld  $\phi 3$  LED on board with 90 degrees, and same height, but avoid pins broken.

## FIX-LED-313



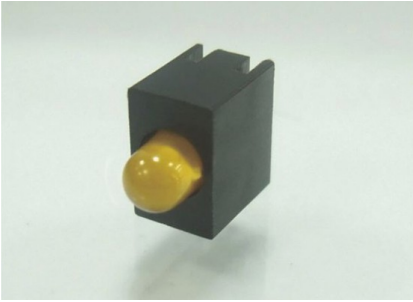
MATERIAL: NYLON 66(UL)  
 FLAME CLASS: 94V-2  
 COLOR:BLACK  
 UNIT:mm  
 RECOMMEND ASSEMBLING LED SIZE : 3  
 NUMBER OF ASSEMBLING LED : 1



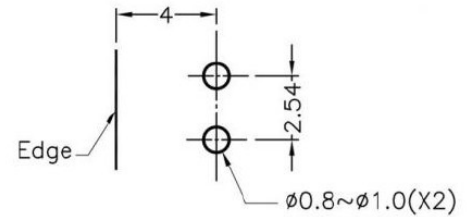
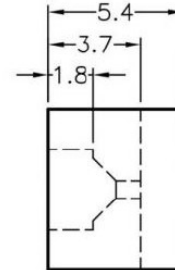
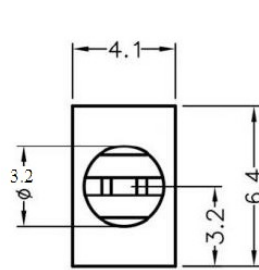
MOUNTING HOLE

To weld  $\phi 3$  LED on board with 90 degrees, and same height, but avoid pins broken.

## FIX-LED-314



MATERIAL: NYLON 66(UL)  
 FLAME CLASS: 94V-2  
 COLOR:BLACK  
 UNIT:mm  
 RECOMMEND ASSEMBLING LED SIZE : 3  
 NUMBER OF ASSEMBLING LED : 1



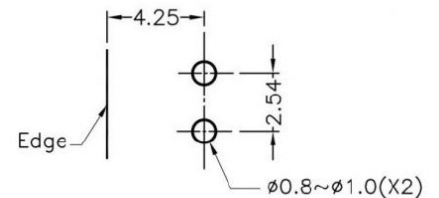
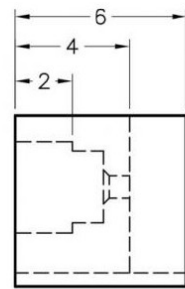
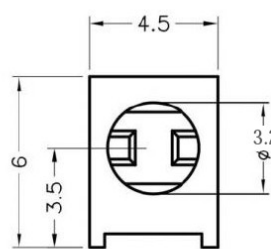
MOUNTING HOLES

To weld  $\phi 3$  LED on board with 90 degrees, and same height, but avoid pins broken.

## FIX-LED-316



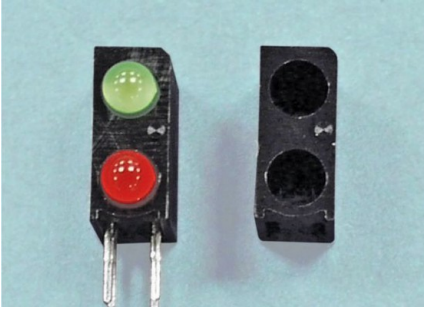
MATERIAL: NYLON 66(UL)  
 FLAME CLASS: 94V-2  
 COLOR:BLACK  
 UNIT:mm  
 RECOMMEND ASSEMBLING LED SIZE : 3  
 NUMBER OF ASSEMBLING LED : 1



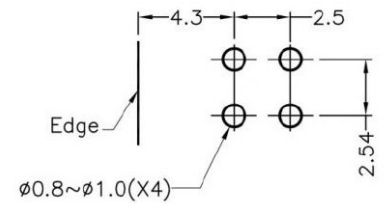
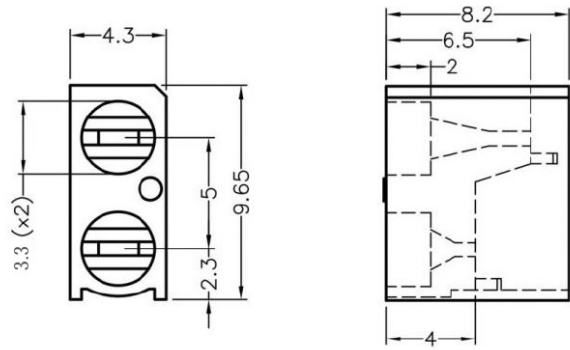
MOUNTING HOLES

To weld  $\phi 3$  LED on board with 90 degrees, and same height, but avoid pins broken.

## FIX-LED-322



MATERIAL: NYLON 66(UL)  
 FLAME CLASS: 94V-2  
 COLOR:BLACK  
 UNIT:mm  
 RECOMMEND ASSEMBLING LED SIZE : 3  
 NUMBER OF ASSEMBLING LED : 2



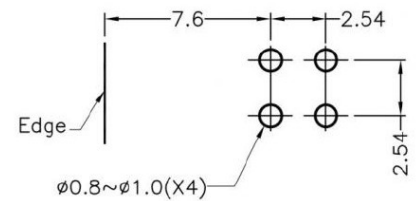
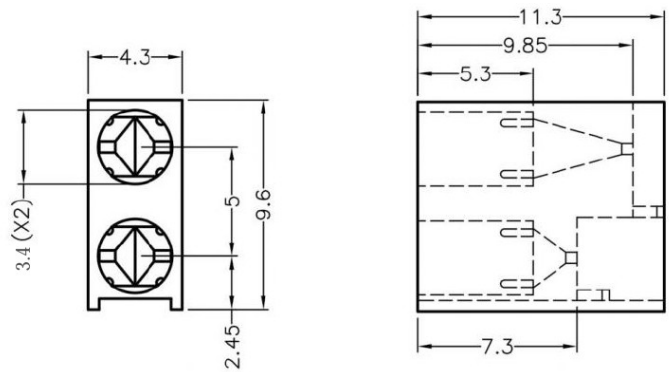
MOUNTING HOLE

To weld  $\phi 3$  LED on board with 90 degrees, and same height, but avoid pins broken.

## FIX-LED-323



MATERIAL: NYLON 66(UL)  
 FLAME CLASS: 94V-2  
 COLOR:BLACK  
 UNIT:mm  
 RECOMMEND ASSEMBLING LED SIZE : 3  
 NUMBER OF ASSEMBLING LED : 2

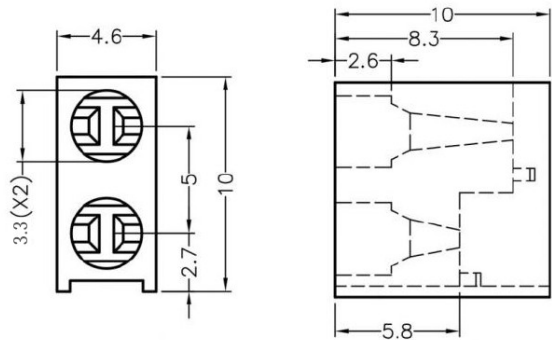


MOUNTING HOLE

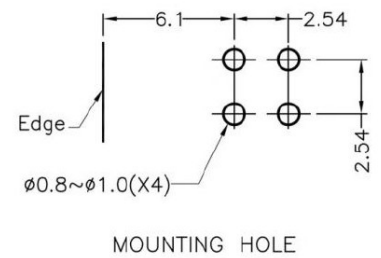
To weld  $\phi 3$  LED on board with 90 degrees, and same height, but avoid pins broken.



## FIX-LED-324

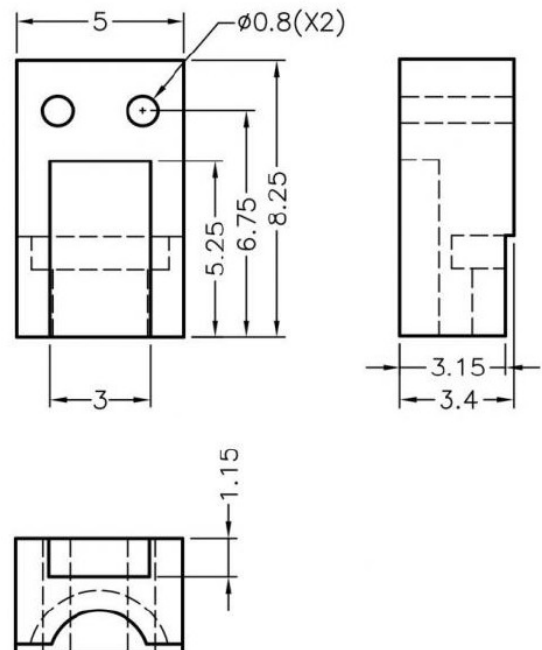


MATERIAL: NYLON 66(UL)  
 FLAME CLASS: 94V-2  
 COLOR:BLACK  
 UNIT:mm  
 RECOMMEND ASSEMBLING LED SIZE : 3  
 NUMBER OF ASSEMBLING LED : 2



To weld  $\phi 3$  LED on board with 90 degrees, and same height, but avoid pins broken.

## FIX-LED-325



MATERIAL: NYLON 66(UL)  
 FLAME CLASS: 94V-2  
 COLOR:BLACK  
 UNIT:mm  
 RECOMMEND ASSEMBLING LED SIZE : 3  
 NUMBER OF ASSEMBLING LED : 1

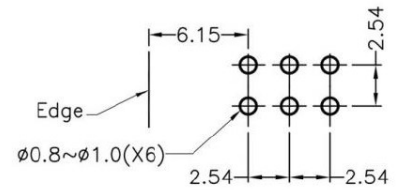
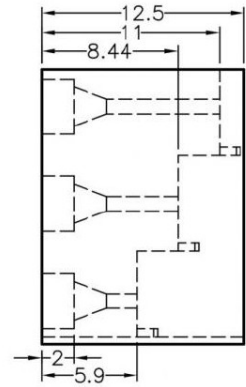
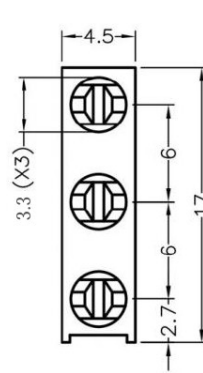
To weld  $\phi 3$  LED on board with 90 degrees, and same height, but avoid pins broken.



## FIX-LED-330



MATERIAL: NYLON 66(UL)  
 FLAME CLASS: 94V-2  
 COLOR:BLACK  
 UNIT:mm  
 RECOMMEND ASSEMBLING LED SIZE : 3  
 NUMBER OF ASSEMBLING LED : 3



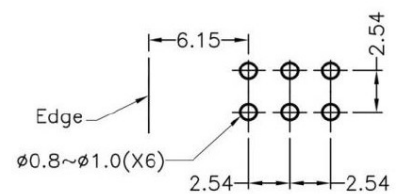
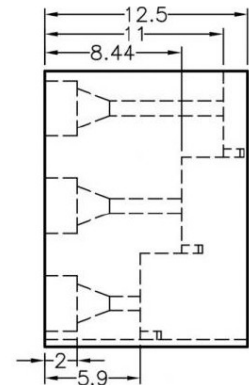
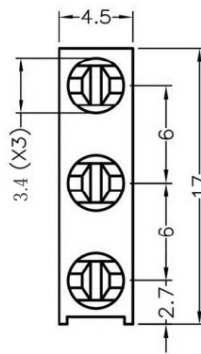
MOUNTING HOLE

To weld  $\phi 3$  LED on board with 90 degrees, and same height, but avoid pins broken.

## FIX-LED-331



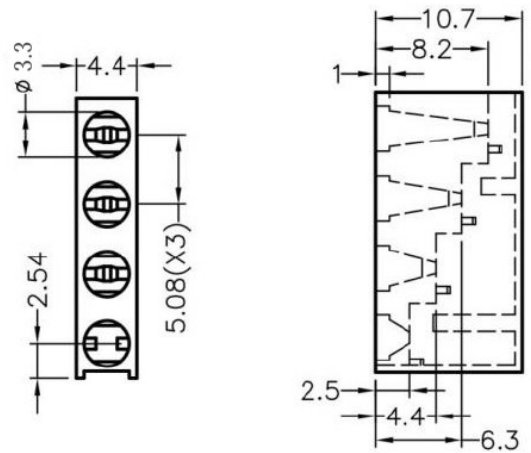
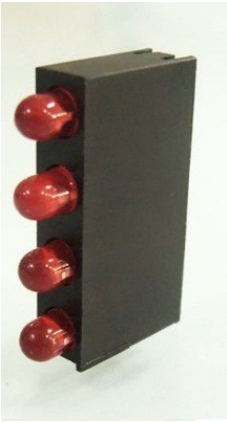
MATERIAL: NYLON 66(UL)  
 FLAME CLASS: 94V-2  
 COLOR:BLACK  
 UNIT:mm  
 RECOMMEND ASSEMBLING LED SIZE : 3  
 NUMBER OF ASSEMBLING LED : 3



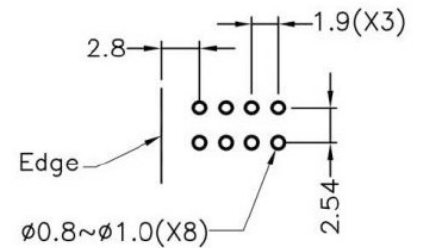
MOUNTING HOLE

To weld  $\phi 3$  LED on board with 90 degrees, and same height, but avoid pins broken.

## FIX-LED-340



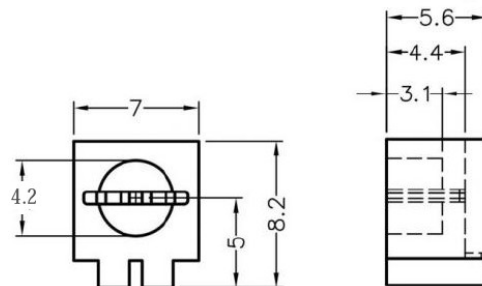
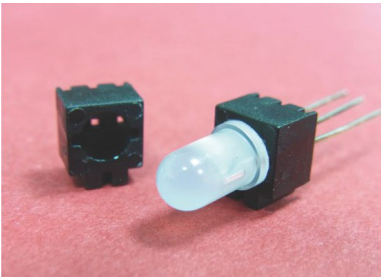
MATERIAL: NYLON 66(UL)  
 FLAME CLASS: 94V-2  
 COLOR:BLACK  
 UNIT:mm  
 RECOMMEND ASSEMBLING LED SIZE : 3  
 NUMBER OF ASSEMBLING LED : 4



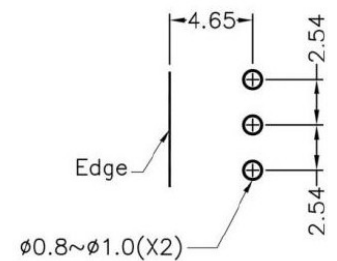
MOUNTING HOLE

To weld  $\phi 3$  LED on board with 90 degrees, and same height, but avoid pins broken.

## FIX-LED-319



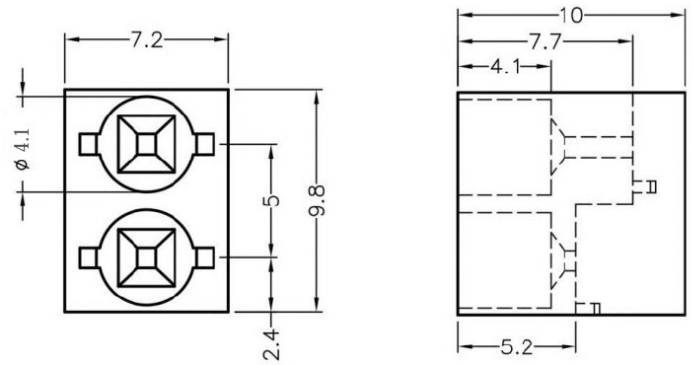
MATERIAL: NYLON 66(UL)  
 FLAME CLASS: 94V-2  
 COLOR:BLACK  
 UNIT:mm  
 RECOMMEND ASSEMBLING LED SIZE : 3  
 NUMBER OF ASSEMBLING LED : 1



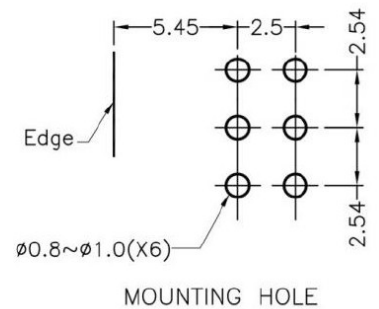
MOUNTING HOLE

To weld  $\phi 3$  3PIN LED on board with 90 degrees, and same height, but avoid pins broken.

## FIX-LED-310

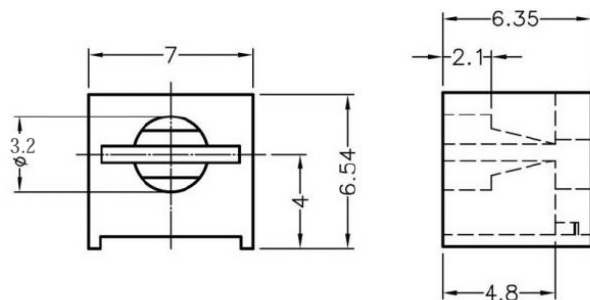
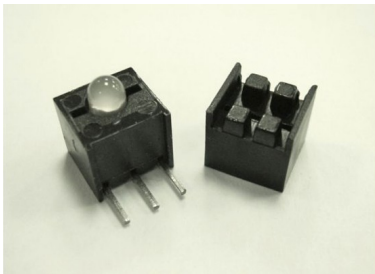


MATERIAL: NYLON 66(UL)  
 FLAME CLASS: 94V-2  
 COLOR:BLACK  
 UNIT:mm  
 RECOMMEND ASSEMBLING LED SIZE : 3  
 NUMBER OF ASSEMBLING LED : 2

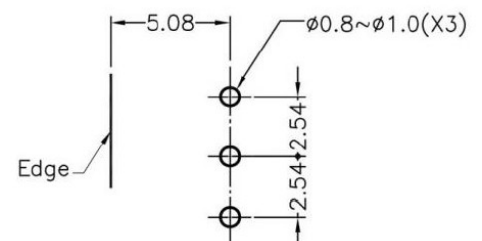


To weld  $\phi 3$  3PIN LED on board with 90 degrees, and same height, but avoid pins broken.

## FIX-LED-343



MATERIAL: NYLON 66(UL)  
 FLAME CLASS: 94V-2  
 COLOR:BLACK  
 UNIT:mm  
 RECOMMEND ASSEMBLING LED SIZE : 3  
 NUMBER OF ASSEMBLING LED : 1



To weld  $\phi 3$  3PIN LED on board with 90 degrees, and same height, but avoid pins broken.

## X-ON Electronics

Largest Supplier of Electrical and Electronic Components

*Click to view similar products for [Control Switches](#) category:*

*Click to view products by [Fix & Fasten](#) manufacturer:*

Other Similar products are found below :

[80887-99](#) [80932-99](#) [86855-00](#) [88814-30](#) [1424293-1](#) [HW4S-2TC10](#) [89721-12](#) [89804-08](#) [SSN](#) [RL01801](#) [ASD2L20N-LVO](#) [50051857-17](#)  
[50099156-001-05](#) [51.155R-15200](#) [50058920-26](#) [CP-FA51](#) [CP-FA49](#) [ACCU-SC/L-3000](#) [PP9M](#) [PP87G](#) [PP86GA](#) [PP71G](#) [PP70G](#) [PP6G](#)  
[PP62G](#) [PP58BL](#) [PP56G](#) [PP86GB](#) [PP77GA](#) [PP76G](#) [PP4M](#) [PP47G](#) [PP46G](#) [PP41M](#) [PP40G](#) [PP32G](#) [RD-20](#) [PP23M](#) [PP12G](#) [PORTAPRO](#)  
[POM-2708](#) [PNB-2005](#) [3057.0012](#) [CV-075](#) [CV-140SB](#) [CV-150](#) [CV-150S](#) [214X20XK](#) [CV-180](#) [CV-200MB](#)