

FLUKE®

NEW! 6.5 Digit Precision
Multimeter from Fluke



FLUKE®

Fluke 8845A & 8846A 6.5 Digit Precision Multimeter

- World renowned leader in precision DMM's



World renowned leader in precision

Analog Performance

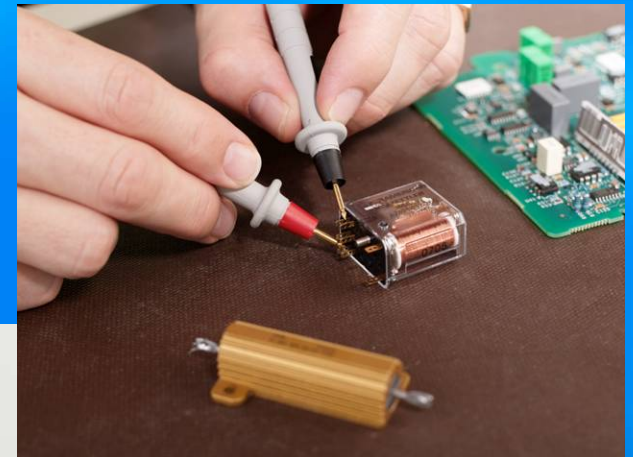
- For Precision Measurement Applications
 - 6.5 Digit Resolution
 - Primary & Secondary Readings
 - 0.0024% Basic Vdc Accuracy
 - With Wider Ranges
 - 100 mV to 1000 V with 100 nV Resolution
 - 10 Ω to 1 G Ω with 10 $\mu\Omega$ Resolution
 - 100 μ A to 10 A with 100 pA Resolution

Full Suite of Measurements

- A variety of measurements for every application
 - Volts, Ohms and Amps Plus:-
 - Capacitance: 1 nf to 50 mF, 1 pF Resolution
 - Temp: RTD, -200 °C to 600 °C, 0.001 °C Resolution (RTD 4 Wire & 385 with Ro & Alpha parameters)
 - Freq & Period: 3 Hz to 1 MHz @ ± 0.01 % Rdg
 - Math Functions: Zero, dBm, dB, Min/Max/Ave & Standard Deviation

Innovative Functions

- Unique innovative functions that extend meter utility
 - Patented 2x4 Wire Ohms Measurement Technique.
 - USB Memory Port
 - TrendPlot™
 - Histogram
 - Statistics



System Connectivity

FLUKE®

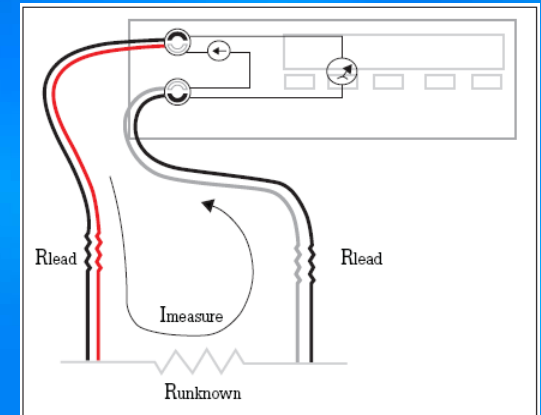
- Remote interfaces to PC's and ATE systems
 - IEEE-488.2
 - LAN
 - RS-232
 - Optional - RS-232 to USB Adapter
 - Trigger I/O
 - Rear Panel Inputs
 - Fluke 45 & Agilent 34401A Command Emulation



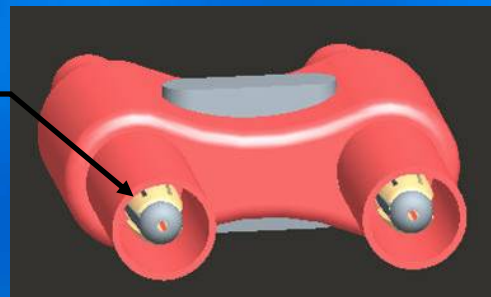
2x4 Wire Ohms Technique

FLUKE®

- 4 Wire measurement method is used for precision lo-ohms measurements, typically < 100 Ohms
- **Why:** Eliminates including the test lead resistance in measurement, typical 0.5 Ohm without 4 wire
- **What does 2x4 Wire Ohms do:**
 - 1) Combines 4 wire Source & Sense leads into two test leads,
 - 2) Simplifies connecting to the device under test, eliminating setup errors.
 - 3) Allows probing into tight or small components



Patented Split Contacts provide 4 wire measurements in a single pair of test leads



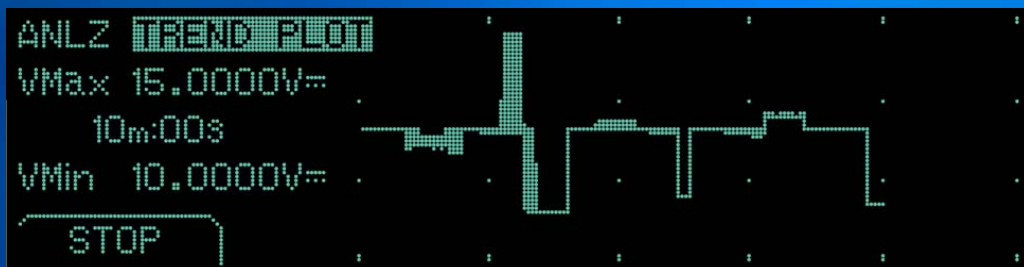
Applications

- Relay contact resistance
- Coil resistance
- Terminators (Lo-Ohms)
- Connector contacts
- Reference Dividers

TrendPlot™

FLUKE®

- Trendplot is used to understand signal dynamics like drift, glitches etc.
- **Why:** A numeric based DMM cannot display signal historic trends.
- **What does the 8845A and 8846A offer:**
 - 1) Graphical display that plots measurements over time.
 - 2) Quickly display signal issues like drift, glitches, surges and drop-outs.
 - 3) Real time analysis, no need to transfer data to a PC.
 - 4) Vertical resolution up to 1 ppm, unheralded for graphical trend plotting

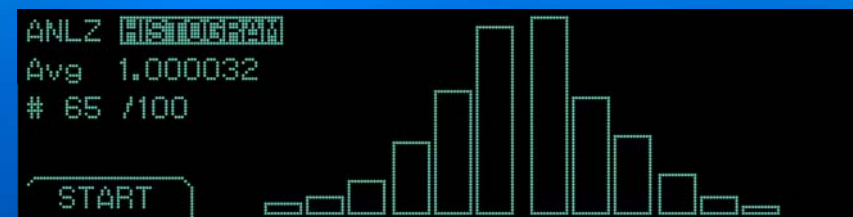
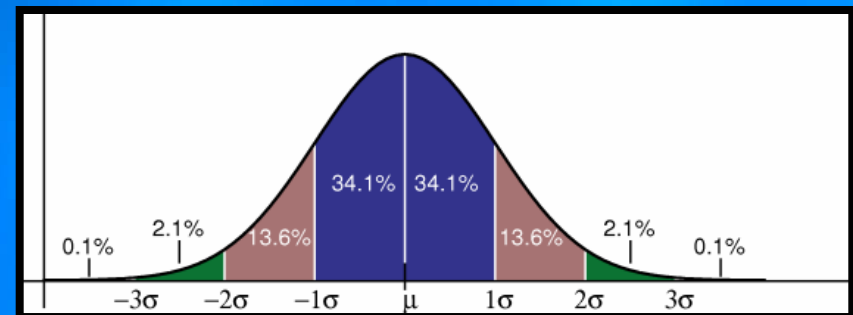


Applications

- Temperature Monitoring
- Monitoring reference test points through temperature cycle
- Verify circuit designs.
- Temp Controlled Crystal Oscillator circuit tests
- Capture Intermittent Events
- Power Supply Stability Tests

Statistical Analysis

- Easily determine standard deviation (noise) of a set of measurements
- **Why:** Quantify measurements with real data. Determine statistical distribution of measurements relative to DUT specifications
- **What does the 8845A and 8846A offer:**
 - 1) Automatic calculation of Min, Max, Ave and Standard Deviation
 - 2) For convenience, present results in one screen. Eliminate having to switch functions and re-take measurements
 - 3) Graphically plot Histogram, providing an easy to use visual analysis tool.



And... It's easy to use!

- Dot Matrix display with context sensitive menus and soft keys
- Direct access to measurement parameters and instrument settings



Current Input Fuses

- The 100 mA and 10 A inputs are protected by user-replaceable fuses.
 - 100 mA input, fuse rated at 440 mA, 1000 V (fast blow)
 - 10 A input, fuse rated at 11 A, 1000 V (fast blow),



- Gain easy access without breaking cal seal
- Safety Rated CAT I 1000V, CAT II 600V
- **Warning:** For protection against fire or arc flash, replace a blown fuse only with one of the identical rating.

Summary Specifications

- Internal Memory
 - 5000 Readings
- Power
 - 100V, 120V, 220V, 240V
 - 47 Hz to 440 Hz
 - 28VA peak
 - 12 W Avg
- Display
 - Vacuum Fluorescent, Dot Matrix Display

	8845A	8846A
Resolution	6.5 Digits	
Measurement Function		
Basic VDC Accuracy	0.0035%	0.0024%
VDC	1000 V	
VAC	750 V	1000 V
Resistance (2x4 Wire Ohms)	100 Mohm	1 Gohm
ADC	100 uAmp to 10 Amp	
AAC	10 mAmp to 10 Amp	100 uAmp to 10 Amp
Freq/Period	3 Hz to 300 kHz	3 Hz to 1 MHz
Continuity / Diode Test	Yes	
Capacitance	—	1 nF to 0.1 F
Temperature RTD	—	-200° to + 600°
Advanced Functions		
Analytical Functions	Statistics, Histogram, TrendPlot™, Limit Compare	
Math Functions	NULL, Min/Max	NULL, Min/Max, dB/dBm
Input Output		
USB Memory Port	—	USB Memory Drive port
Real Time Clock	—	Yes
Interfaces	RS232, IEEE-488.2, Ethernet, USB Adapter	
Programming/ Emulation	SCPI (IEEE-488.2), Agilent 34401A, Fluke 45	
General		
Weight	3.6 kg (8.0lbs)	
Size	8.46" (215mm)W, 3.46" (88 mm) H, 11.53" (293 mm) D	
Safety	Designed to comply with IEC 61010-12000-1, ANSI / ISA-S82.01-1994, CAN / CSA-C22.2 No.1010.1-92 1000V CATI / 600V CATII	
Warranty	1year	

Models

FLUKE®

Mainframes		
8845A	6.5 Digit Precision Multimeter, 35ppm	\$995
8845A/SU	6.5 Digit Precision Multimeter, SW & Cable	\$1195
8846A	6.5 Digit Precision DMM, 24ppm USB Mem	\$1395
8846A/SU	6.5 Digit Precision Multimeter, SW & Cable	\$1595
Whats Included:	Standard Units	
TL71 LCI Line Cord Fuse CARD Warranty CD-ROM FVF-SC5	TL71, TEST LEAD SET,PREMIUM DMM Line Power Cord Spare Line Power fuse Statement of Calibration Practices (8 1/2 x 11 Sheet paper) WEEE Information Sheet Registration Card, Generic, Web Access Accessories Brochure Warranty Information Document CD-Rom, Programmer And Users Manual, 8845A/8846a FlukeView Forms -Basic For 8845/8846	
884xA SU (Software plus Cable bundle)		
FVF-UG 884X-USB	FlukeView Forms Software Upgrade - NO cable USB to RS232 cable adapter	

Accessories

Accessories		Test Leads & Probes	
TL71	TL71, Test Lead Set, Premium DMM		\$16
TL910	Precision Electronic Probe Set		\$40
TL80A	Basic Electronic DMM Test Set		\$45
8845A-TPIT	Test Probe IC Tip (Set Red & Black)		WIP
8845A-EFPT	Extended Fine PT Tip Adap Set (Red/Black)		WIP
TL2X4W-PT	2x4 Wire Ohms Test lead		\$75
TL2X4W-KC	2x4 Wire Ohms Kelvin Clip		WIP
TL2X4W-TWZ	2x4 Wire Ohms SMD Test Tweezer		WIP
884X-RTD	100 Ohm RTD Temperature Probe		WIP
884X-SHORT	4-Wire short		\$30
Interface Cables			
884X-USB	USB to RS232 cable adapter		\$150
884X-ETH	Ethernet Interface Cable		\$18
RS43	RS232 Cable (2m)		\$50
Y8021	IEEE488 cable (1m)		\$210
Y8022	IEEE488 cable (2m)		\$260

Memory		
884X-512M	USB Memory 512M	\$75
884X-1G	USB Memory 1 GB	\$125
Software		
FVF-UG	FlukeView Forms Software Upgrade - NO cable	\$75
FVF-SC4	FlukeView Forms W/Cable For 8845/8846	\$225
Other		
Y8846	Rack Mount Kit	WIP
FUSE	FUSE, 11A, 1000V, FAST, .406INX1.5IN, BULK	\$7.75
FUSE	FUSE, .440 mA, 1000V, FAST, .406X1.375, BULK	\$7.9

Summary

- The Fluke 8845A & 8846A provide the best in class analog performance
- Have a complete suite of measurement functions for every application
- Include new innovative techniques and functions to improve testing and troubleshooting

**The Best Performance, Utility and Value in 6.5 Digit
Multimeter Category**

X-ON Electronics

Largest Supplier of Electrical and Electronic Components

Click to view similar products for [Digital Multimeters](#) category:

Click to view products by [Fluke](#) manufacturer:

Other Similar products are found below :

[6111-517](#) [FS881](#) [C.A 6133 LAUNCH KIT](#) [FLUKE-179-2/IMSK](#) [P 1020 A](#) [P 1070](#) [P 3315](#) [P 3340](#) [KEWMATE 2000A](#) [P 3725](#)
[SEFRAM7202](#) [SEFRAM7220](#) [SEFRAM7221](#) [SEFRAM7303](#) [SEFRAM7223](#) [AMP-220-EUR KIT2](#) [BM785](#) [BM789](#) [BS K-CLIP](#)
[KEW2012RA](#) [FLUKE-110/ERTA](#) [FLUKE 87-V MAX](#) [FLUKE-87V-MAX/E2 KIT](#) [P 2005 A](#) [P 3349](#) [UT161D](#) [DVM821](#) [19290](#) [IBT6K](#)
[AX-573](#) [C.A 5293-BT](#) [1000-219](#) [1001-613](#) [1006-969](#) [30XR](#) [34XR](#) [35XP](#) [TESTO 745](#) [0590 7450](#) [TESTO 760-3](#) [0590 7603](#) [440012](#) [AX-](#)
[155](#) [AX-174](#) [AX-178](#) [AX-18B](#) [AX-190A](#) [AX-503](#) [AX-507B](#) [AX-594](#) [AX-LCR42A](#) [AX-MS811](#)