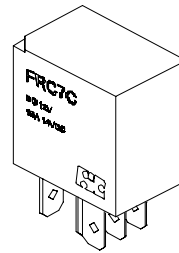


# FRC7 RELAY



## FEATURES

- 20A contact rating
- High temperature design
- 1 Form A & 1 Form C arrangements
- Ideal use for control car
- Quick connect or PCB terminals



## SPECIFICATION

### COIL RATING

RATED VOLTAGE V DC	COIL RESISTANCE $\Omega$ + / - 10%		RATED CURRENT (mA)		MUST OPERATE VOLTAGE	MUST DROPOUT VOLTAGE	MAXIMUM VOLTAGE	POWER CONSUMPTION (W)
	1 Form A	1 Form C	1 Form A	1 Form C	% OF RATED VOLTAGE (AT 20°C)			
6	30	25	200	250	UNSEALED MODEL : 60 Max.  SEALED MODEL : 65 Max.	10 Min.	130 Max.	1 FORM A : 1.2W
12	120	96	100	124				1 FORM C : 1.5W
24	480	384	50	62.5				

### CHARACTERISTICS

Contact Arrangement	SPST (1 Form A); SPDT (1 FORM C)
Contact Material	Silver Alloy
Contact Resistance	50m $\Omega$ Max.
Contact Rating (Resistive Load)	<b>FRC7</b> NO : 25A 14VDC NC : 20A 14VDC <b>FRC7N</b> NO : 20A 14VDC NC : 15A 14VDC
Switching Voltage	DC 75V Max
Operate Time (Initial)	10ms Max.
Release Time (Initial)	7ms Max.
Insulation Resistance	100M $\Omega$ Min. ( 500V DC)
Dielectric Strength	500Vrms, 1 minute between coil and contacts
Shock Resistance	10g Approx.
Vibration Resistance	1.27mm Double Amplitude, 10-40Hz
Ambient Temperature	Storage : -40°C to +155°C Operate : -40°C to +85°C
Humidity	20 - 85% RH
Operation Life	Mechanical : 10 <sup>7</sup> Electrical : 10 <sup>5</sup> (At Rated Load)
Weight	18.5g Approx.

[Specifications are subject to change without notices.]

## FORWARD INDUSTRIAL COMPANY. (O/B COMMERCIAL UNION LTD)

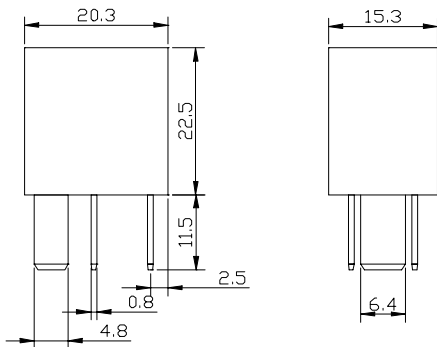
RM. 1405, Wu Sang House, 655 Nathan Road, Mongkok, Kowloon, Hong Kong.

TEL : (852) 27892365 FAX : (852) 27893102 E-MAIL : sales@ficrelay.com.hk

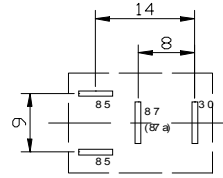
WEBSITE : <http://www.ficrelay.com.hk>



## FRC7N - Plug in type

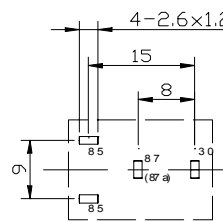
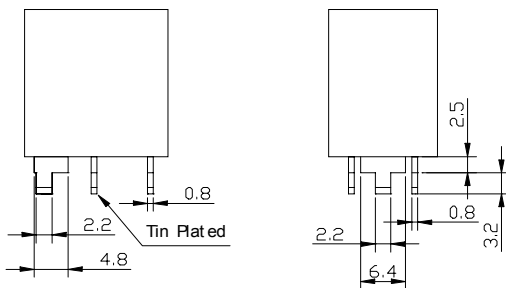


## MOUNTING (BOTTOM VIEW)



Plug in type

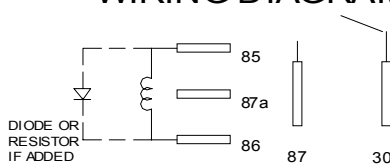
## FRC7N - PCB type



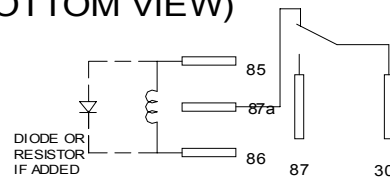
PCB type

## FRC7

### WIRING DIAGRAM (BOTTOM VIEW)



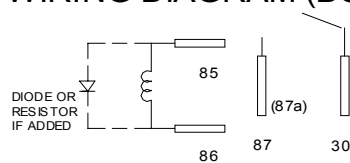
1 FORM A



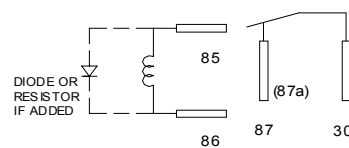
1 FORM C

## FRC7N

### WIRING DIAGRAM (BOTTOM VIEW)



1 FORM A



1 FORM B

## X-ON Electronics

Largest Supplier of Electrical and Electronic Components

*Click to view similar products for [Automotive Relays](#) category:*

*Click to view products by [Forward](#) manufacturer:*

Other Similar products are found below :

[896H-1AH-D1SW-001-24VDC](#) [896H-1AH-D1SW-R1-12VDC](#) [896H-1CH-C1-001-12VDC](#) [896H-1CH-S-24VDC](#) [896HP-1AH-C-12VDC](#)  
[G5CE1ASIDC12](#) [AEV31024](#) [1393204-2](#) [1393302-3](#) [13Z99A115-0074](#) [1432872-1](#) [1617057-2](#) [2-1617057-2](#) [CB1F-M-12V-H15](#) [CB1-T-R-M-](#)  
[12V](#) [896H-1CH-D1SF-R1-12VDC](#) [896H-1CH-D1SF-R1-T-12VDC](#) [898H-1AH-D-001-12VDC](#) [24198-1](#) [5-1616920-2](#) [5-1617052-9](#) [5407-](#)  
[0011-HS](#) [CB1AF-M-12V-H59](#) [5-1617346-8](#) [103-1AH-C-12VDC](#) [CF2Q-12V](#) [V23134A1052X299](#) [CP112J](#) [896H-1AH-S1-001-12VDC](#)  
[897H-1AH-D-R1-U01-12VDC](#) [896H-1CH-D-U39-24VDC](#) [896HP-1AH-C-U2120VDC](#) [896E-1CH-D1SW-U57-12VDC](#) [896H-1CH-D1SW-](#)  
[R1-U30-12VDC](#) [896H-1AH-C1S-R1-24VDC](#) [102-1CH-C-12VDC](#) [V23076A3001D142T](#) [1-19042-6](#) [3-1393305-1](#) [J7TKNA9](#)  
[V23234A1001X043-EV-144](#) [V23086-R1851-A502](#) [898H-1AH-D1SW-R1-12VDC](#) [RH4C1P2607](#) [RE031005](#) [V23134M0052G242](#) [1393204-1](#)  
[G8N-1L-AS DC12](#) [V23076A3022D142](#) [V23074A2001A402](#)