



# 安徽富信半导体科技有限公司

ANHUI FOSAN SEMICONDUCTOR TECHNOLOGY CO., LTD.

BZT52C2V4S-BZT52C43S

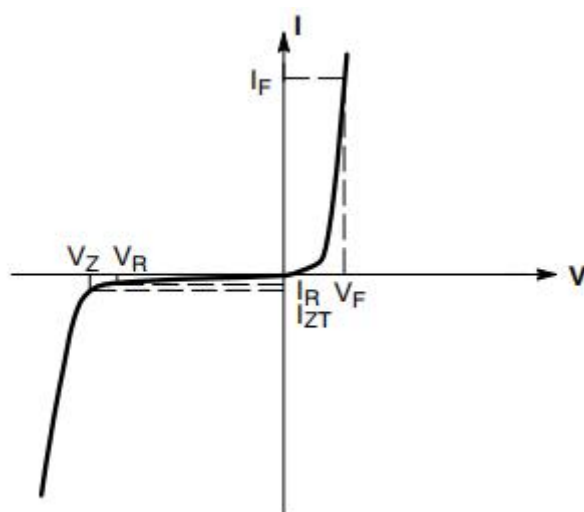
SOD-323 Surface Mounted Zener Diode 表面贴装稳压二极管



SOD-323

## ■ Absolute Maximum Ratings 最大额定值

| Characteristic<br>特性参数                      | Symbol<br>符号                        | Rat<br>额定值  | Unit<br>单位                |
|---|-------------------------------------|---|---------------------------|
| Power dissipation<br>耗散功率                   | $P_D$<br>( $T_a=25^\circ\text{C}$ ) | 200   | mW                        |
| Thermal Resistance Junction-Ambient<br>热阻   | $R_{\theta JA}$                     | 625   | $^\circ\text{C}/\text{W}$ |
| Forward Voltage<br>正向电压                     | $V_F$<br>(@ $I_F=10\text{mA}$ )     | 0.9   | V                         |
| Reverse Voltage<br>反向电压                     | $V_Z$                               | 2.4-43  | V                         |
| Junction and Storage Temperature<br>结温和储藏温度 | $T_J, T_{stg}$                      | 150 $^\circ\text{C}$ , -65to+150 $^\circ\text{C}$ |                           |





# 安徽富信半导体科技有限公司

ANHUI FOSAN SEMICONDUCTOR TECHNOLOGY CO., LTD.

BZT52C2V4S-BZT52C43S

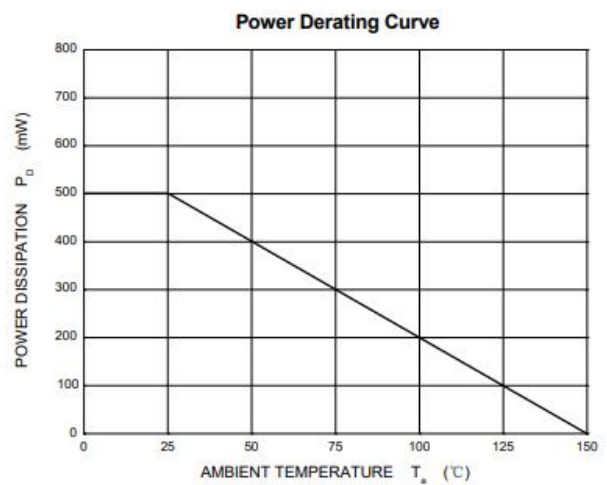
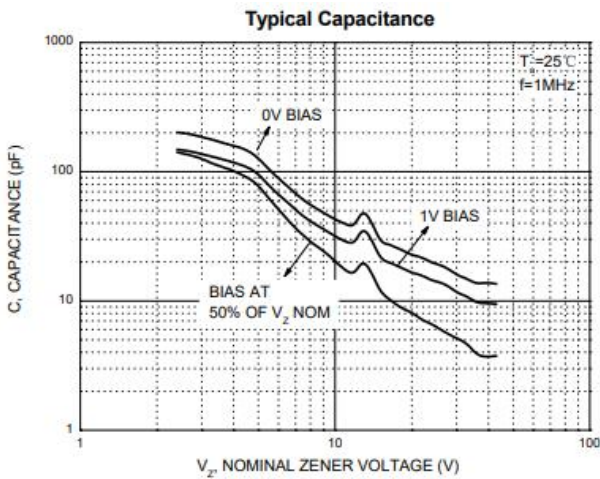
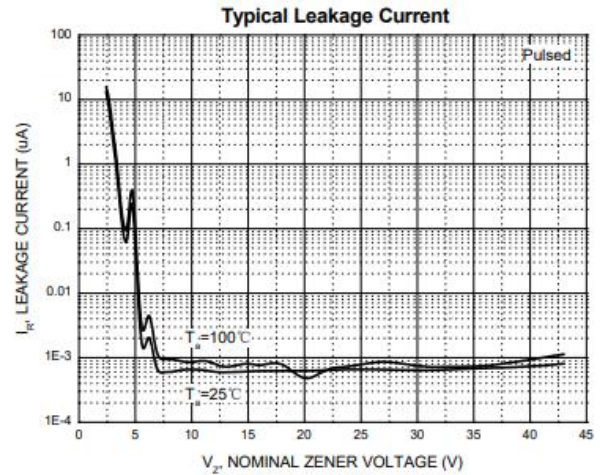
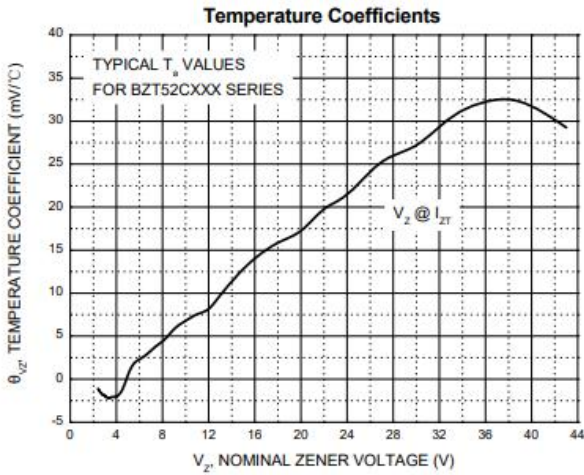
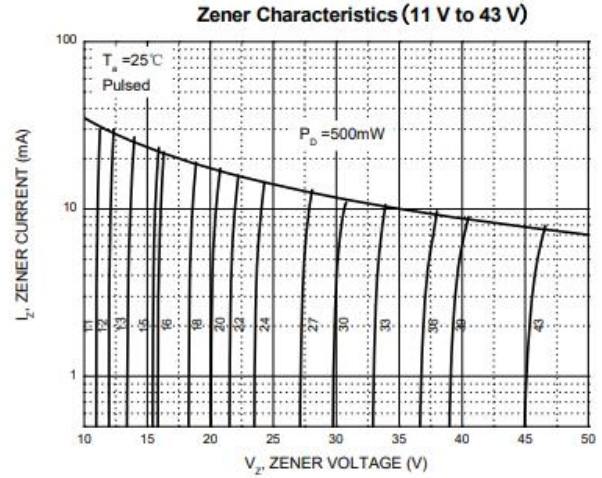
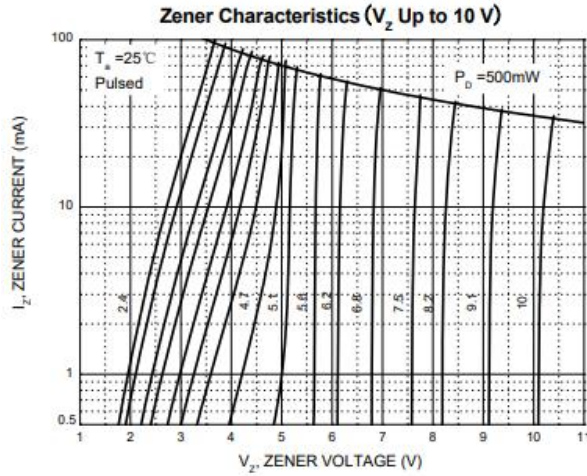
## ■ Electrical Characteristics 电特性

( $T_A=25^{\circ}\text{C}$  unless otherwise noted 如无特殊说明, 温度为  $25^{\circ}\text{C}$ )

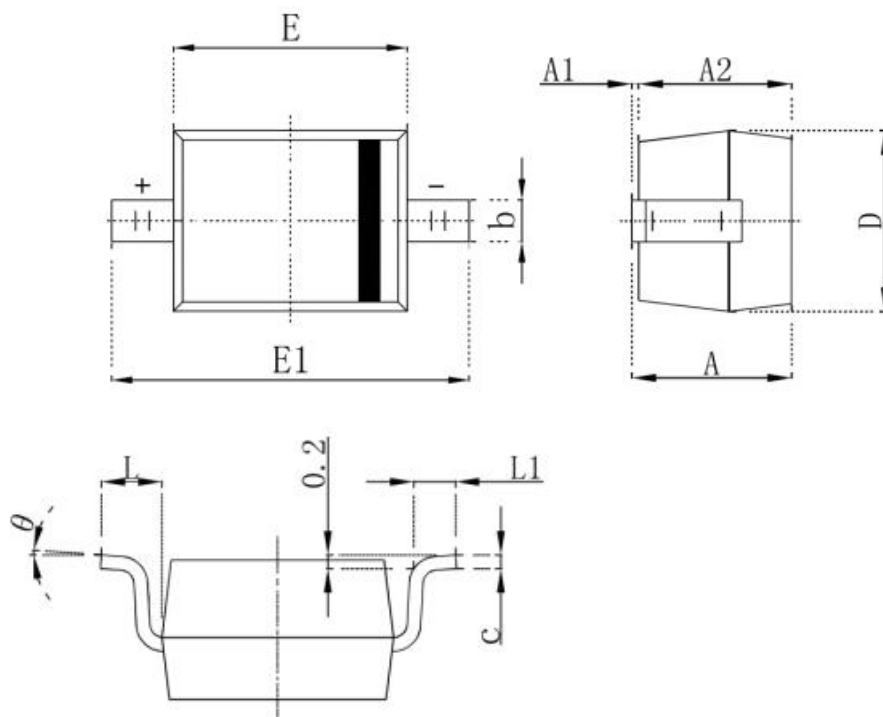
| Type       | $V_Z(\text{V})$       |      | DIFFERENTIAL RESISTANCE $r_{\text{dif}}(\Omega)$ |      |                       |      | TEMP. COEFF. $S_z(\text{mV/K})$ |      |      | $I_R(\mu\text{A})$ |         | Marking |
|------------|-----------------------|------|--|------|-----------------------|------|---------------------------------|------|------|--------------------|---------|---------|
|            | @ $I_{ZT}=5\text{mA}$ |      | @ $I_{ZK}=1\text{mA}$                            |      | @ $I_{ZT}=5\text{mA}$ |      | @ $I_{ZT}=5\text{mA}$           |      |      | @ $V_R(\text{V})$  |         |         |
|            | MIN.                  | MAX. | TYP.   | MAX. | TYP.                  | MAX. | MIN.                            | TYP. | MAX. | $I_R$              | @ $V_R$ |         |
| BZT52C2V4S | 2.2                   | 2.6  | 325  | 600  | 80                    | 100  | -3.5                            | -2.1 | 0    | 50                 | 1       | WX      |
| BZT52C2V7S | 2.5                   | 2.9  | 325  | 600  | 80                    | 100  | -3.5                            | -2.1 | 0    | 20                 | 1       | W1      |
| BZT52C3V0S | 2.8                   | 3.2  | 325  | 600  | 80                    | 95   | -3.5                            | -2.1 | 0    | 10                 | 1       | W2      |
| BZT52C3V3S | 3.1                   | 3.5  | 350  | 600  | 85                    | 95   | -3.5                            | -2.4 | 0    | 5                  | 1       | W3      |
| BZT52C3V6S | 3.4                   | 3.8  | 375  | 600  | 85                    | 90   | -3.5                            | -2.4 | 0    | 5                  | 1       | W4      |
| BZT52C3V9S | 3.7                   | 4.1  | 400  | 600  | 85                    | 90   | -3.5                            | -2.5 | 0    | 3                  | 1       | W5      |
| BZT52C4V3S | 4.0                   | 4.6  | 400  | 600  | 85                    | 90   | -3.5                            | -2.5 | 0    | 3                  | 1       | W6      |
| BZT52C4V7S | 4.4                   | 5.0  | 410  | 600  | 80                    | 90   | -3.5                            | -2.5 | 0    | 3                  | 2       | W7      |
| BZT52C5V1S | 4.8                   | 5.4  | 425  | 500  | 50                    | 80   | -3.5                            | -1.4 | 0.2  | 2                  | 2       | W8      |
| BZT52C5V6S | 5.2                   | 6.0  | 400  | 480  | 40                    | 60   | -2.7                            | -0.8 | 1.2  | 1                  | 2       | W9      |
| BZT52C6V2S | 5.8                   | 6.6  | 80   | 400  | 15                    | 40   | -2.0                            | 1.2  | 2.5  | 3                  | 4       | WA      |
| BZT52C6V8S | 6.4                   | 7.2  | 40   | 150  | 6                     | 10   | 0.4                             | 2.3  | 3.7  | 2                  | 4       | WB      |
| BZT52C7V5S | 7.0                   | 7.9  | 30   | 80   | 6                     | 15   | 1.2                             | 3.0  | 4.5  | 1                  | 5       | WC      |
| BZT52C8V2S | 7.7                   | 8.7  | 30   | 80   | 6                     | 15   | 2.5                             | 4.0  | 5.3  | 0.7                | 5       | WD      |
| BZT52C9V1S | 8.5                   | 9.6  | 40   | 80   | 6                     | 15   | 3.2                             | 4.6  | 6.2  | 0.5                | 6       | WE      |
| BZT52C10S  | 9.4                   | 10.6 | 40   | 100  | 6                     | 15   | 3.8                             | 5.5  | 7.0  | 0.2                | 7       | WF      |
| BZT52C11S  | 10.4                  | 11.6 | 50   | 150  | 8                     | 20   | 4.5                             | 6.4  | 8.0  | 0.1                | 8       | WG      |
| BZT52C12S  | 11.4                  | 12.7 | 50   | 150  | 10                    | 20   | 5.4                             | 7.4  | 9.0  | 0.1                | 8       | WH      |
| BZT52C13S  | 12.4                  | 14.1 | 50   | 150  | 10                    | 25   | 6.0                             | 8.4  | 10.0 | 0.1                | 8       | WI      |
| BZT52C15S  | 13.8                  | 15.6 | 50   | 170  | 10                    | 30   | 7.0                             | 9.4  | 11.0 | 0.05               | 10.5    | WJ      |
| BZT52C16S  | 15.3                  | 17.1 | 50   | 200  | 10                    | 30   | 9.2                             | 11.4 | 13.0 | 0.05               | 11.2    | WK      |
| BZT52C18S  | 16.8                  | 19.1 | 50   | 200  | 10                    | 40   | 10.4                            | 12.4 | 14.0 | 0.05               | 12.6    | WL      |
| BZT52C20S  | 18.8                  | 21.2 | 50   | 225  | 10                    | 45   | 12.4                            | 14.4 | 16.0 | 0.05               | 14      | WM      |
| BZT52C22S  | 20.8                  | 23.3 | 60   | 225  | 15                    | 55   | 14.4                            | 16.4 | 18.0 | 0.05               | 15.4    | WN      |
| BZT52C24S  | 22.8                  | 25.6 | 60   | 250  | 20                    | 55   | 16.4                            | 18.4 | 20.0 | 0.05               | 16.8    | WO      |
| BZT52C27S  | 25.1                  | 28.9 | 65   | 300  | 25                    | 80   | 21.4                            | 23.4 | 25.3 | 0.05               | 18.9    | WP      |
| BZT52C30S  | 28.0                  | 32.0 | 70   | 300  | 30                    | 80   | 24.4                            | 26.6 | 29.4 | 0.05               | 21      | WQ      |
| BZT52C33S  | 31.0                  | 35.0 | 75   | 325  | 35                    | 80   | 27.4                            | 29.7 | 33.4 | 0.05               | 23.1    | WR      |
| BZT52C36S  | 34.0                  | 38.0 | 80   | 350  | 35                    | 90   | 30.4                            | 33.0 | 37.4 | 0.05               | 25.2    | WS      |
| BZT52C39S  | 37.0                  | 41.0 | 80   | 350  | 40                    | 130  | 33.4                            | 36.4 | 41.2 | 0.05               | 27.3    | WT      |
| BZT52C43S  | 40.0                  | 46.0 | 85   | 375  | 45                    | 150  | 37.6                            | 41.2 | 46.6 | 0.05               | 30.1    | WU      |



## Typical Characteristic Curve 典型特性曲线



## ■Dimension 外形封装尺寸



| Symbol | Dimensions In Millimeters |       | Dimensions In Inches |       |
|--------|---------------------------|-------|----------------------|-------|
|        | Min.                      | Max.  | Min.                 | Max.  |
| A      |                           | 1.000 |                      | 0.039 |
| A1     | 0.000                     | 0.100 | 0.000                | 0.004 |
| A2     | 0.800                     | 0.900 | 0.031                | 0.035 |
| b      | 0.250                     | 0.350 | 0.010                | 0.014 |
| c      | 0.080                     | 0.150 | 0.003                | 0.006 |
| D      | 1.200                     | 1.400 | 0.047                | 0.055 |
| E      | 1.600                     | 1.800 | 0.063                | 0.071 |
| E1     | 2.250                     | 2.750 | 0.100                | 0.108 |
| L      | 0.475 REF                 |       | 0.019 REF            |       |
| L1     | 0.250                     | 0.400 | 0.010                | 0.016 |
| θ      | 0°                        | 8°    | 0°                   | 8°    |

## X-ON Electronics

Largest Supplier of Electrical and Electronic Components

*Click to view similar products for [Zener Diodes](#) category:*

*Click to view products by [FOSAN](#) manufacturer:*

Other Similar products are found below :

[RKZ13B2KG#P1](#) [DL5234B](#) [EDZTE6113B](#) [1N4682](#) [1N4691](#) [1N4693](#) [1N4732A](#) [1N4736A](#) [1N4750A](#) [1N4759ARL](#) [1N5241B](#) [1N5365B](#)  
[1N5369B](#) [1N747A](#) [1N959B](#) [1N964B](#) [1N966B](#) [1N968B](#) [1N972B](#) [NTE5121A](#) [NTE5147A](#) [NTE5152A](#) [NTE5155A](#) [NTE5164A](#)  
[JANS1N4974US](#) [JANTX1N5907](#) [1N4692](#) [1N4700](#) [1N4702](#) [1N4704](#) [1N4711](#) [1N4714](#) [1N4737A](#) [1N4745ARL](#) [1N4752A](#) [1N4752ARL](#)  
[1N4760ARL](#) [1N5221B](#) [1N5231B-TR](#) [1N5236B](#) [1N5241BTR](#) [1N5242BTR](#) [1N5350B](#) [1N5352B](#) [1N961BRR1](#) [1N964BRL](#) [RKZ5.1BKU#P6](#)  
[3SMAJ5946B-TP](#) [3SMAJ5950B-TP](#) [3SMBJ5925B-TP](#)