



安徽富信半导体科技有限公司

ANHUI FOSAN SEMICONDUCTOR TECHNOLOGY CO., LTD.

BZT52C2V4S-BZT52C43S

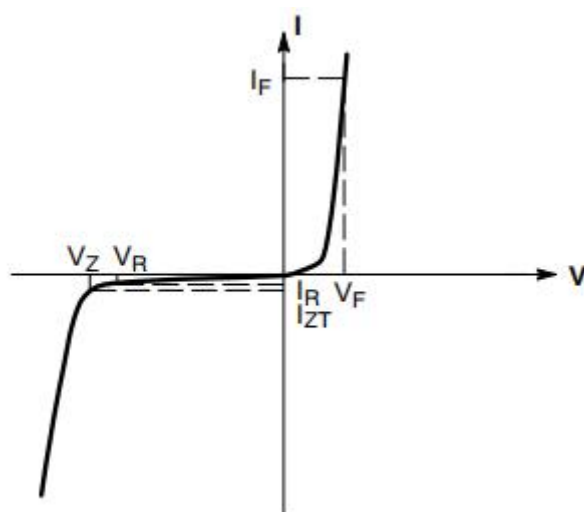
SOD-323 Surface Mounted Zener Diode 表面贴装稳压二极管



SOD-323

■ Absolute Maximum Ratings 最大额定值

| Characteristic 特性参数 | Symbol 符号 | Rat 额定值 | Unit 单位 |
|---|-------------------------------------|---|---------------------------|
| Power dissipation 耗散功率 | P_D ($T_a=25^\circ\text{C}$) | 200 | mW |
| Thermal Resistance Junction-Ambient 热阻 | $R_{\theta JA}$ | 625 | $^\circ\text{C}/\text{W}$ |
| Forward Voltage 正向电压 | V_F (@ $I_F=10\text{mA}$) | 0.9 | V |
| Reverse Voltage 反向电压 | V_Z | 2.4-43 | V |
| Junction and Storage Temperature 结温和储藏温度 | T_J, T_{stg} | 150 $^\circ\text{C}$, -65to+150 $^\circ\text{C}$ | |





安徽富信半导体科技有限公司

ANHUI FOSAN SEMICONDUCTOR TECHNOLOGY CO., LTD.

BZT52C2V4S-BZT52C43S

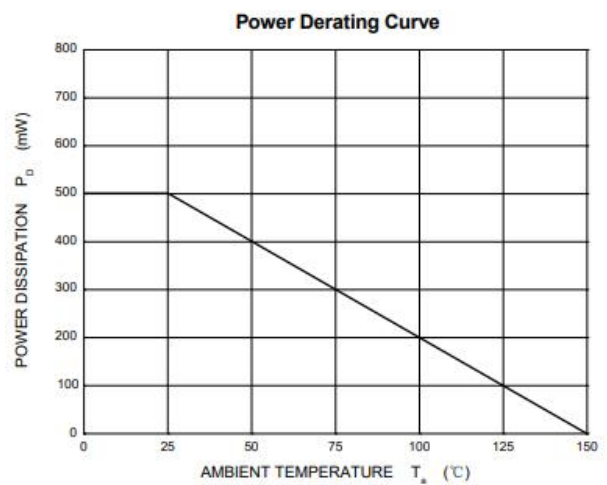
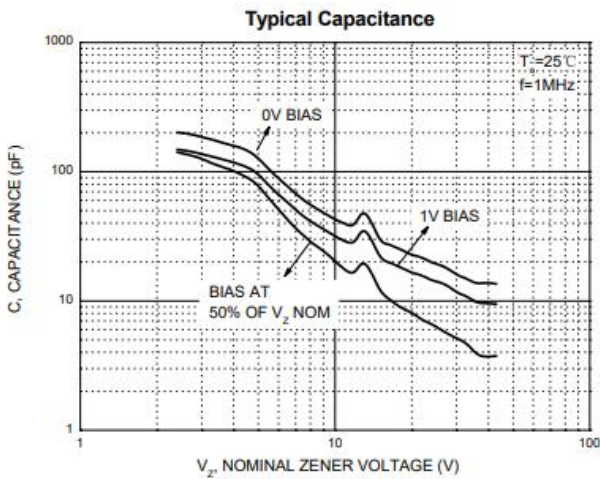
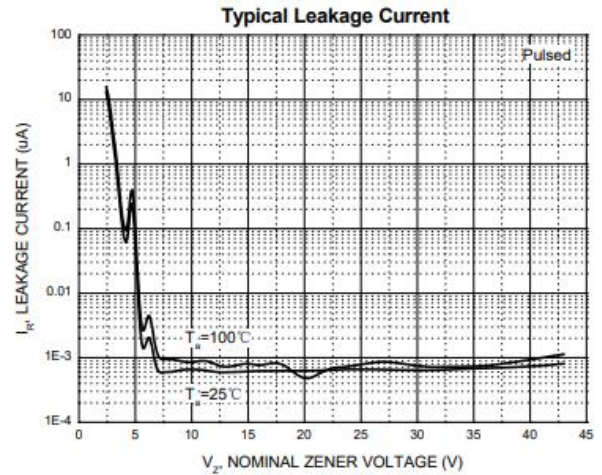
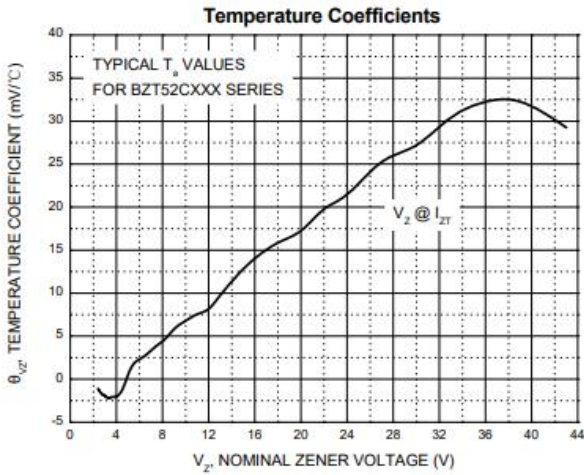
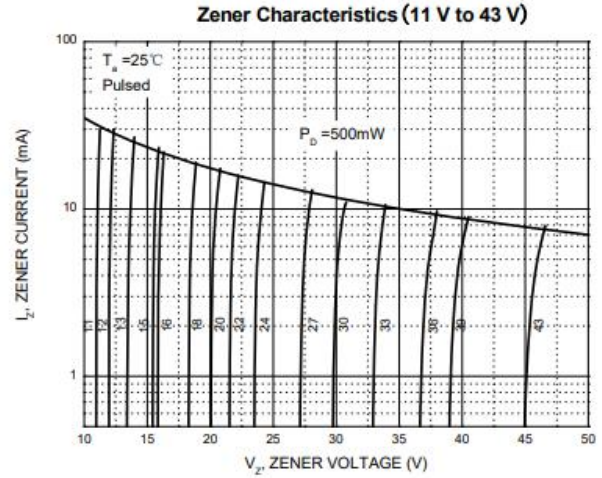
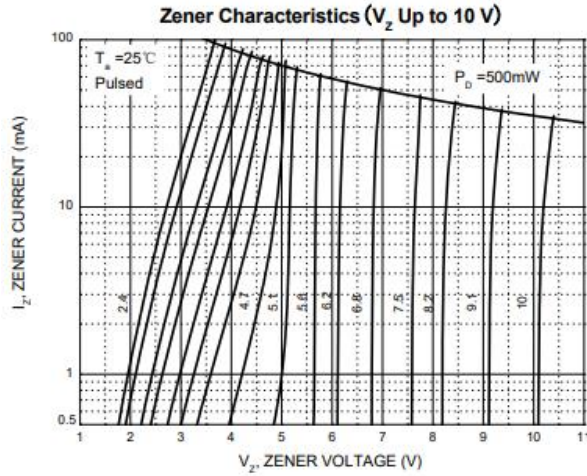
■Electrical Characteristics 电特性

($T_A=25^{\circ}\text{C}$ unless otherwise noted 如无特殊说明, 温度为 25°C)

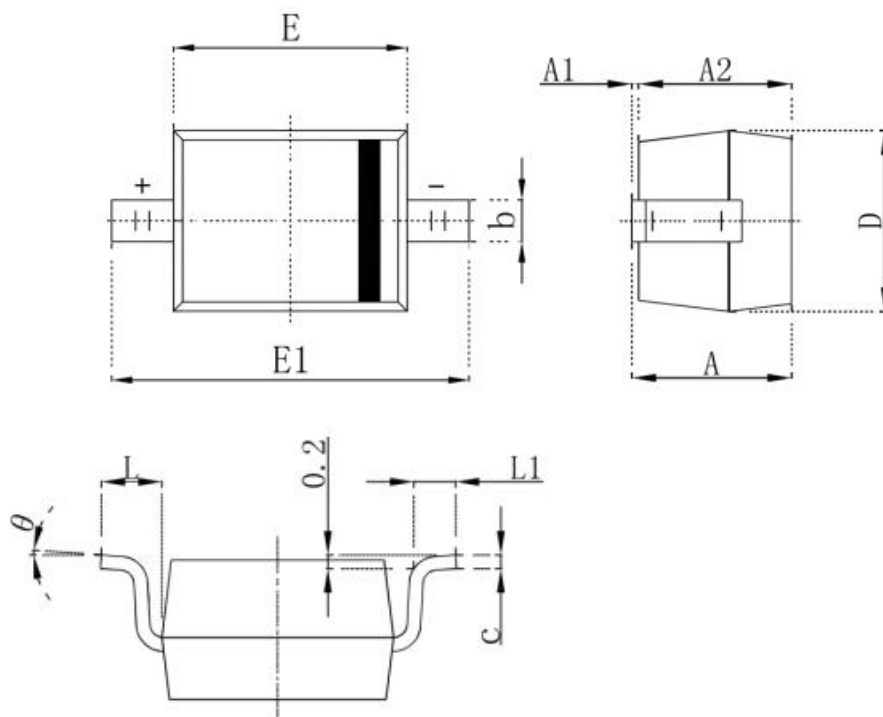
| Type | $V_Z(\text{V})$ | | DIFFERENTIAL RESISTANCE $r_{\text{dif}}(\Omega)$ | | | | TEMP. COEFF. $S_z(\text{mV/K})$ | | | $I_R(\mu\text{A})$ | | Marking |
|------------|-----------------------|------|--|------|-----------------------|------|---------------------------------|------|------|--------------------|---------|---------|
| | @ $I_{ZT}=5\text{mA}$ | | @ $I_{ZK}=1\text{mA}$ | | @ $I_{ZT}=5\text{mA}$ | | @ $I_{ZT}=5\text{mA}$ | | | @ $V_R(\text{V})$ | | |
| | MIN. | MAX. | TYP. | MAX. | TYP. | MAX. | MIN. | TYP. | MAX. | I_R | @ V_R | |
| BZT52C2V4S | 2.2 | 2.6 | 325 | 600 | 80 | 100 | -3.5 | -2.1 | 0 | 50 | 1 | WX |
| BZT52C2V7S | 2.5 | 2.9 | 325 | 600 | 80 | 100 | -3.5 | -2.1 | 0 | 20 | 1 | W1 |
| BZT52C3V0S | 2.8 | 3.2 | 325 | 600 | 80 | 95 | -3.5 | -2.1 | 0 | 10 | 1 | W2 |
| BZT52C3V3S | 3.1 | 3.5 | 350 | 600 | 85 | 95 | -3.5 | -2.4 | 0 | 5 | 1 | W3 |
| BZT52C3V6S | 3.4 | 3.8 | 375 | 600 | 85 | 90 | -3.5 | -2.4 | 0 | 5 | 1 | W4 |
| BZT52C3V9S | 3.7 | 4.1 | 400 | 600 | 85 | 90 | -3.5 | -2.5 | 0 | 3 | 1 | W5 |
| BZT52C4V3S | 4.0 | 4.6 | 400 | 600 | 85 | 90 | -3.5 | -2.5 | 0 | 3 | 1 | W6 |
| BZT52C4V7S | 4.4 | 5.0 | 410 | 600 | 80 | 90 | -3.5 | -2.5 | 0 | 3 | 2 | W7 |
| BZT52C5V1S | 4.8 | 5.4 | 425 | 500 | 50 | 80 | -3.5 | -1.4 | 0.2 | 2 | 2 | W8 |
| BZT52C5V6S | 5.2 | 6.0 | 400 | 480 | 40 | 60 | -2.7 | -0.8 | 1.2 | 1 | 2 | W9 |
| BZT52C6V2S | 5.8 | 6.6 | 80 | 400 | 15 | 40 | -2.0 | 1.2 | 2.5 | 3 | 4 | WA |
| BZT52C6V8S | 6.4 | 7.2 | 40 | 150 | 6 | 10 | 0.4 | 2.3 | 3.7 | 2 | 4 | WB |
| BZT52C7V5S | 7.0 | 7.9 | 30 | 80 | 6 | 15 | 1.2 | 3.0 | 4.5 | 1 | 5 | WC |
| BZT52C8V2S | 7.7 | 8.7 | 30 | 80 | 6 | 15 | 2.5 | 4.0 | 5.3 | 0.7 | 5 | WD |
| BZT52C9V1S | 8.5 | 9.6 | 40 | 80 | 6 | 15 | 3.2 | 4.6 | 6.2 | 0.5 | 6 | WE |
| BZT52C10S | 9.4 | 10.6 | 40 | 100 | 6 | 15 | 3.8 | 5.5 | 7.0 | 0.2 | 7 | WF |
| BZT52C11S | 10.4 | 11.6 | 50 | 150 | 8 | 20 | 4.5 | 6.4 | 8.0 | 0.1 | 8 | WG |
| BZT52C12S | 11.4 | 12.7 | 50 | 150 | 10 | 20 | 5.4 | 7.4 | 9.0 | 0.1 | 8 | WH |
| BZT52C13S | 12.4 | 14.1 | 50 | 150 | 10 | 25 | 6.0 | 8.4 | 10.0 | 0.1 | 8 | WI |
| BZT52C15S | 13.8 | 15.6 | 50 | 170 | 10 | 30 | 7.0 | 9.4 | 11.0 | 0.05 | 10.5 | WJ |
| BZT52C16S | 15.3 | 17.1 | 50 | 200 | 10 | 30 | 9.2 | 11.4 | 13.0 | 0.05 | 11.2 | WK |
| BZT52C18S | 16.8 | 19.1 | 50 | 200 | 10 | 40 | 10.4 | 12.4 | 14.0 | 0.05 | 12.6 | WL |
| BZT52C20S | 18.8 | 21.2 | 50 | 225 | 10 | 45 | 12.4 | 14.4 | 16.0 | 0.05 | 14 | WM |
| BZT52C22S | 20.8 | 23.3 | 60 | 225 | 15 | 55 | 14.4 | 16.4 | 18.0 | 0.05 | 15.4 | WN |
| BZT52C24S | 22.8 | 25.6 | 60 | 250 | 20 | 55 | 16.4 | 18.4 | 20.0 | 0.05 | 16.8 | WO |
| BZT52C27S | 25.1 | 28.9 | 65 | 300 | 25 | 80 | 21.4 | 23.4 | 25.3 | 0.05 | 18.9 | WP |
| BZT52C30S | 28.0 | 32.0 | 70 | 300 | 30 | 80 | 24.4 | 26.6 | 29.4 | 0.05 | 21 | WQ |
| BZT52C33S | 31.0 | 35.0 | 75 | 325 | 35 | 80 | 27.4 | 29.7 | 33.4 | 0.05 | 23.1 | WR |
| BZT52C36S | 34.0 | 38.0 | 80 | 350 | 35 | 90 | 30.4 | 33.0 | 37.4 | 0.05 | 25.2 | WS |
| BZT52C39S | 37.0 | 41.0 | 80 | 350 | 40 | 130 | 33.4 | 36.4 | 41.2 | 0.05 | 27.3 | WT |
| BZT52C43S | 40.0 | 46.0 | 85 | 375 | 45 | 150 | 37.6 | 41.2 | 46.6 | 0.05 | 30.1 | WU |



Typical Characteristic Curve 典型特性曲线



■Dimension 外形封装尺寸



| Symbol | Dimensions In Millimeters | | Dimensions In Inches | |
|----------|---------------------------|-------|----------------------|-------|
| | Min. | Max. | Min. | Max. |
| A | | 1.000 | | 0.039 |
| A1 | 0.000 | 0.100 | 0.000 | 0.004 |
| A2 | 0.800 | 0.900 | 0.031 | 0.035 |
| b | 0.250 | 0.350 | 0.010 | 0.014 |
| c | 0.080 | 0.150 | 0.003 | 0.006 |
| D | 1.200 | 1.400 | 0.047 | 0.055 |
| E | 1.600 | 1.800 | 0.063 | 0.071 |
| E1 | 2.250 | 2.750 | 0.100 | 0.108 |
| L | 0.475 REF | | 0.019 REF | |
| L1 | 0.250 | 0.400 | 0.010 | 0.016 |
| θ | 0° | 8° | 0° | 8° |

X-ON Electronics

Largest Supplier of Electrical and Electronic Components

Click to view similar products for [Zener Diodes](#) category:

Click to view products by [FOSAN](#) manufacturer:

Other Similar products are found below :

[RKZ13B2KG#P1](#) [DL5234B](#) [EDZTE6113B](#) [1N4682](#) [1N4691](#) [1N4693](#) [1N4732A](#) [1N4736A](#) [1N4750A](#) [1N4759ARL](#) [1N5241B](#) [1N5365B](#)
[1N5369B](#) [1N747A](#) [1N959B](#) [1N964B](#) [1N966B](#) [1N968B](#) [1N972B](#) [NTE5121A](#) [NTE5147A](#) [NTE5152A](#) [NTE5155A](#) [NTE5164A](#)
[JANS1N4974US](#) [JANTX1N5907](#) [1N4692](#) [1N4700](#) [1N4702](#) [1N4704](#) [1N4711](#) [1N4714](#) [1N4737A](#) [1N4745ARL](#) [1N4752A](#) [1N4752ARL](#)
[1N4760ARL](#) [1N5221B](#) [1N5231B-TR](#) [1N5236B](#) [1N5241BTR](#) [1N5242BTR](#) [1N5350B](#) [1N5352B](#) [1N961BRR1](#) [1N964BRL](#) [RKZ5.1BKU#P6](#)
[3SMAJ5946B-TP](#) [3SMAJ5950B-TP](#) [3SMBJ5925B-TP](#)