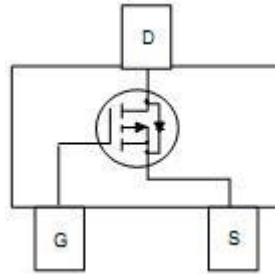
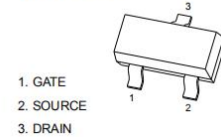


FSS2305

SOT-23-3L 場效應晶體管(SOT-23-3L Field Effect Transistors)



SOT-23-3L



P-Channel Enhancement-Mode MOS FETs

P 沟道增强型 MOS 场效应管

■ MAXIMUM RATINGS 最大額定值

Characteristic 特性參數	Symbol 符號	Rat 額定值	Unit 單位
Drain-Source Voltage 漏極-源極電壓	BV_{DSS}	-20	V
Gate- Source Voltage 柵極-源極電壓	V_{GS}	± 12	V
Drain Current (continuous) 漏極電流-連續	I_D	-4.2	A
Drain Current (pulsed) 漏極電流-脈沖	I_{DM}	-16	A
Total Device Dissipation 總耗散功率 $T_A=25^\circ\text{C}$ 環境溫度為 25°C	P_D	1300	mW
Junction 結溫	T_J	150	$^\circ\text{C}$
Storage Temperature 儲存溫度	T_{stg}	-55to+150	$^\circ\text{C}$

■ DEVICE MARKING 打標

FSS2305=A5SHB



FSS2305

■ ELECTRICAL CHARACTERISTICS 電特性

($T_A=25^{\circ}\text{C}$ unless otherwise noted 如無特殊說明, 溫度為 25°C)

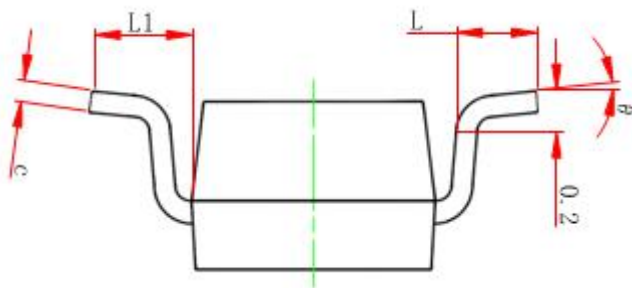
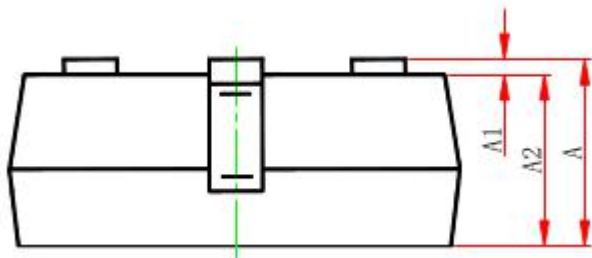
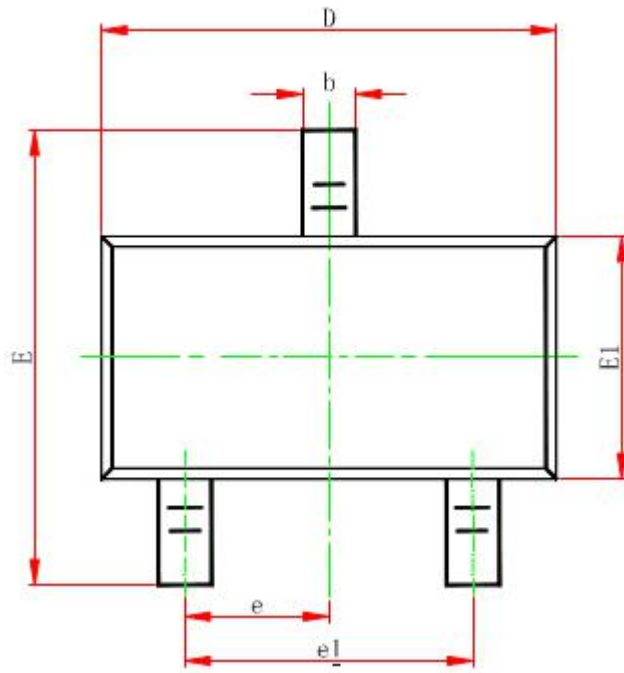
Characteristic 特性參數	Symbol 符號	Min 最小值	Typ 典型值	Max 最大值	Unit 單位
Drain-Source Breakdown Voltage 漏極-源極擊穿電壓($I_D = -250\mu\text{A}, V_{GS}=0\text{V}$)	BV_{DSS}	-20	-22	—	V
Gate Threshold Voltage 柵極開啓電壓($I_D = -250\mu\text{A}, V_{GS} = V_{DS}$)	$V_{GS(th)}$	-0.5	-0.75	-1.5	V
Diode Forward Voltage Drop 內附二極管正向壓降($I_S = -1.6\text{A}, V_{GS}=0\text{V}$)	V_{SD}	—	—	-1.5	V
Zero Gate Voltage Drain Current 零柵壓漏極電流($V_{GS}=0\text{V}, V_{DS} = -16\text{V}$) ($V_{GS}=0\text{V}, V_{DS} = -16\text{V}, T_A=55^{\circ}\text{C}$)	I_{DSS}	—	—	-1 -10	μA
Gate Body Leakage 柵極漏電流($V_{GS}=\pm 10\text{V}, V_{DS}=0\text{V}$)	I_{GSS}	—	—	± 100	nA
Static Drain-Source On-State Resistance 靜態漏源導通電阻($I_D = -4.2\text{A}, V_{GS} = -4.5\text{V}$)	$R_{DS(ON)}$	—	55	60	$m\Omega$
Static Drain-Source On-State Resistance 靜態漏源導通電阻($I_D = -3\text{A}, V_{GS} = -2.5\text{V}$)	$R_{DS(ON)}$	—	70	75	$m\Omega$
Input Capacitance 輸入電容 ($V_{GS}=0\text{V}, V_{DS} = -4\text{V}, f=1\text{MHz}$)	C_{ISS}	—	1200	—	pF
Output Capacitance 輸出電容 ($V_{GS}=0\text{V}, V_{DS} = -4\text{V}, f=1\text{MHz}$)	C_{OSS}	—	380	—	pF
Turn-ON Time 開啓時間 ($V_{DS} = -4\text{V}, I_D = -1\text{A}, R_{GEN}=6\Omega$)	$t_{(on)}$	—	13	—	ns
Turn-OFF Time 關斷時間 ($V_{DS} = -4\text{V}, I_D = -1\text{A}, R_{GEN}=6\Omega$)	$t_{(off)}$	—	55	—	ns

Pulse Width $\leq 300\mu\text{s}$; Duty Cycle $\leq 2.0\%$

FSS2305

■ DIMENSION 外形封裝尺寸

單位(UNIT): mm



代碼	範圍(單位: mm)
A	1.050~1.250
A1	0.000~0.100
A2	1.050~1.150
b	0.300~0.500
c	0.100~0.200
D	2.820~3.020
E1	1.500~1.700
E	2.650~2.950
e	0.950(BSC)
e 1	1.800~2.00
L	0.300~0.600
L1	0.600REF.
θ	0°~8°

X-ON Electronics

Largest Supplier of Electrical and Electronic Components

Click to view similar products for [MOSFET](#) category:

Click to view products by [FOSAN](#) manufacturer:

Other Similar products are found below :

[614233C](#) [648584F](#) [IRFD120](#) [IRFF430](#) [JANTX2N5237](#) [2N7000](#) [FCA20N60_F109](#) [FDZ595PZ](#) [AOD464](#) [2SK2267\(Q\)](#) [2SK2545\(Q,T\)](#)
[405094E](#) [423220D](#) [MIC4420CM-TR](#) [VN1206L](#) [614234A](#) [715780A](#) [SSM6J414TU,LF\(T](#) [751625C](#) [BSC884N03MS G](#) [BSF024N03LT3 G](#)
[PSMN4R2-30MLD](#) [TK31J60W5,S1VQ\(O](#) [2SK2614\(TE16L1,Q\)](#) [DMN1017UCP3-7](#) [EFC2J004NUZTDG](#) [FCAB21350L1](#) [P85W28HP2F-](#)
[7071](#) [DMN1053UCP4-7](#) [NTE2384](#) [NTE2969](#) [NTE6400A](#) [DMN2080UCB4-7](#) [DMN61D9UWQ-13](#) [US6M2GTR](#) [DMN31D5UDJ-7](#)
[SSM6P54TU,LF](#) [DMP22D4UFO-7B](#) [IPS60R3K4CEAKMA1](#) [DMN1006UCA6-7](#) [DMN16M9UCA6-7](#) [STF5N65M6](#) [STU5N65M6](#)
[C3M0021120D](#) [DMN13M9UCA6-7](#) [BSS340NWH6327XTSA1](#) [MCM3400A-TP](#) [DMTH10H4M6SPS-13](#) [IRF40SC240ARMA1](#)
[IPS60R1K0PFD7SAKMA1](#)