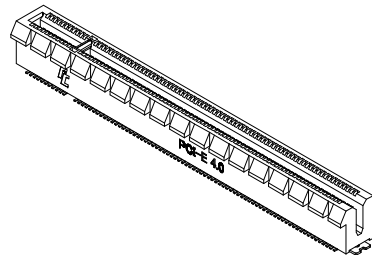
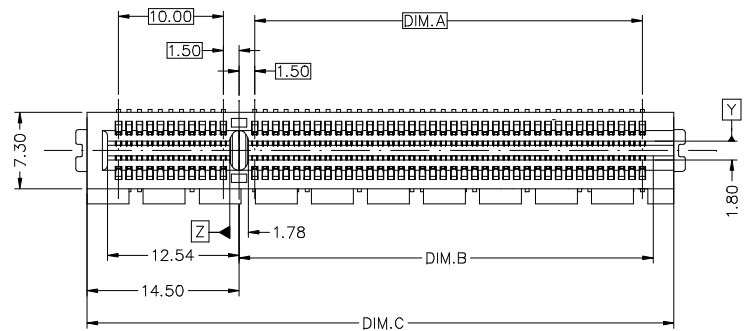
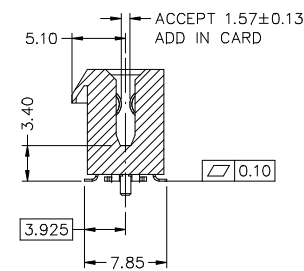
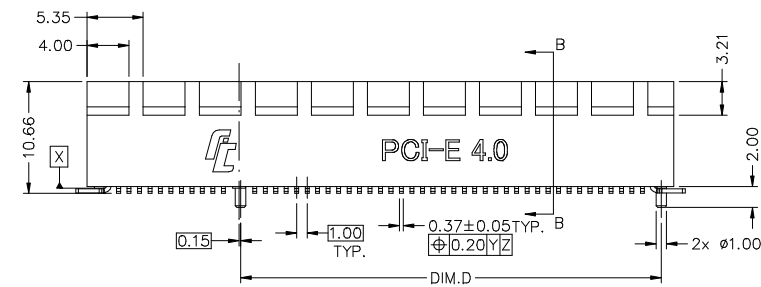


REV.	ECN. NO.	APPD.
X1	08/11'18	Davy Bu
X2	06/27'19	Davy Bu



NOTES:

- ELECTRICAL CHARACTERISTICS:
 - 1-1 CURRENT RATING: 1.1 A PER PIN, 30°C RISE ABOVE AMBIENT.
 - 1-2 CONTACT RESISTANCE: 30 MILLIOHMS MAX. INITIAL, 50 MILLIOHMS MAX. AFTER TEST.
 - 1-3 INSULATION RESISTANCE: 1000 MEGOHMS MIN..
 - 1-4 DIELECTRICAL WITHSTAND VOLTAGE: 500 V AC MIN. AT SEA LEVEL.
- MECHANICAL CHARACTERISTICS:
 - 2-1 CONTACT INSERTION FORCE: 1.15 N MAX. PER CONTACT PAIR.
 - 2-2 CONTACT REMOVAL FORCE: 0.15 N MIN. PER CONTACT PAIR.
 - 2-3 DURABILITY: 50 MATING AND UNMATING CYCLES.
 - 2-4 CONTACT RETENTION FORCE: 3.43 N MIN.
- ENVIRONMENTAL CHARACTERISTICS:
 - 3-1 OPERATING TEMPERATURE RANGE: -40°C TO +105°C .
- RECOMMENDED PROCESS: IR REFLOW 245°C, 3~5 s
- PLEASE CONTACT FOXCONN SALES REPRESENTATIVE TO VERIFY PRODUCTION DETAILS & AVAILABILITY



PROD. NO.: 2EF 5 ** * - DA9DB - * *

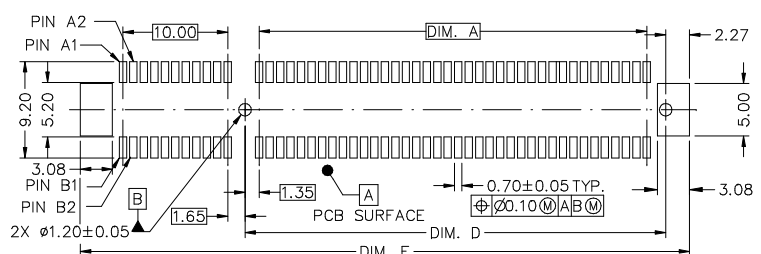
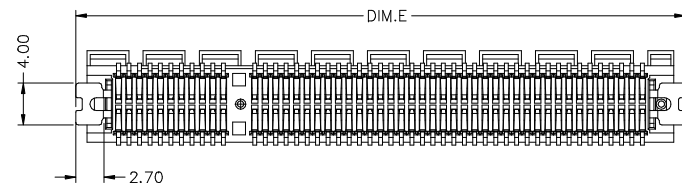
FIELD PRODUCT SERIES:
2EF= PCI-E GEN 4.0

TERMINAL TYPE:
5= SMT TYPE
NO. OF POS.
18= 36 POSITIONS
32= 64 POSITIONS
49= 98 POSITIONS

GREEN CODE:
F: LEAD FREE
RoHS 2.0 COMPLIANT
H: HALOGEN & LEAD FREE
RoHS 2.0 COMPLIANT

PACKAGE CODE:
5: TRAY WITH MYLAR
7: T/R
8: MYLAR + T/R

EXTENSION CODE
CONTACT AREA GOLD PLATING:
1= GOLD FLASH
7= 15u" GOLD
3= 30u" GOLD



RECOMMENDED PCB LAYOUT

3	CONTACT	COPPY ALLOY	50u" NICKEL PLATING OVERALL UNDERPLATED. 100u" MATTE TIN PLATING OVER NICKEL AT TAIL. GOLD PLATING ON CONTACT AREA.
2	PAD	COPPY ALLOY	50u" NICKEL PLATING OVERALL UNDERPLATED. 100u" MATTE TIN PLATING OVER NICKEL AT TAIL.
1	HOUSING	THERMOPLASTIC UL 94V-0	MOLDED BLACK
ITEM	DESCRIPTION	MATERIAL	TREATMENT

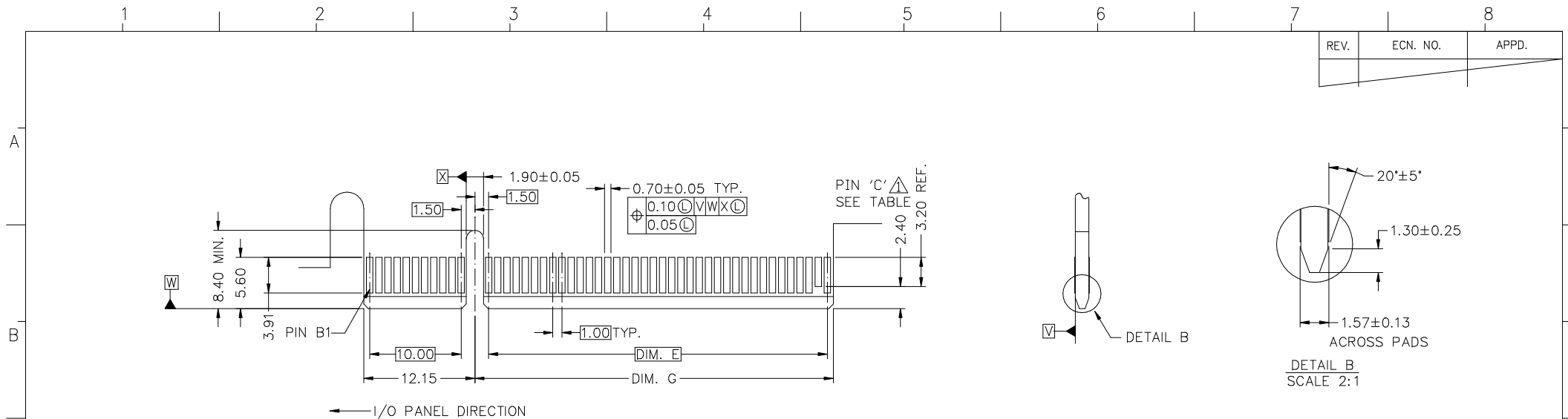
X.±	X.*±	UNITS	NAME<INTENDED USE>	FOXCONN INTERCONNECT TECHNOLOGY LIMITED.
		mm	SMT TYPE PCI-E Gen4.0	
.X± 0.38	.X.*±	MAT'L	PART NO.<INTENDED USE>	CLASS: <input type="checkbox"/> CONFIDENTIAL <input type="checkbox"/> SECRET <input checked="" type="checkbox"/> GENERAL
.XX± 0.25	.XX.*±	N/A	2EF5***-DA9DB-**	
.XXX±	.XXX.*±	FINISH	APPD:	TITLE: CUSTOMER DRAWING
		N/A	Davy Bu 06/27'19	DWG NO.: 303-0000-****
		Q'TY	CHKD: Johnny Tang 06/27'19	SCALE SHEET REV.
		N/A	DRAW: Qin Teng 06/27'19	N/A 1/4 X2

THESE DRAWINGS AND SPECIFICATIONS ARE THE PROPERTY OF FOXCONN INTERCONNECT TECHNOLOGY LIMITED AND SHALL NOT BE REPRODUCED, COPIED OR USED IN ANY MANNER WITHOUT THE PRIOR WRITTEN CONSENT OF FOXCONN INTERCONNECT TECHNOLOGY LIMITED.

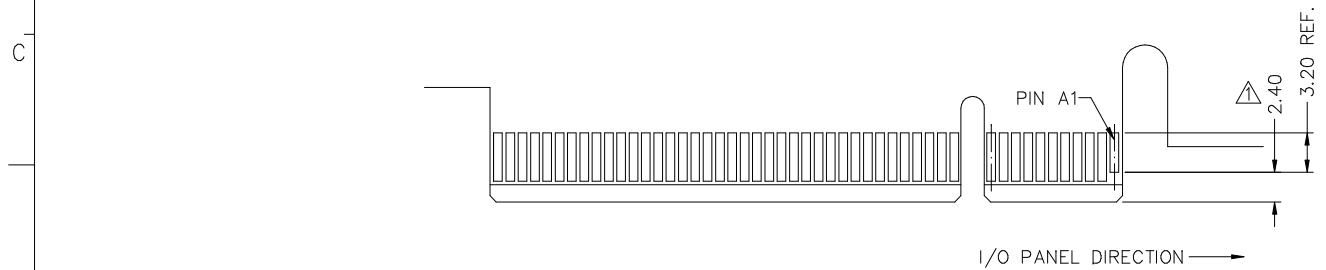
2EF549*-DA9DB-**	37.00	39.54	56.00	40.15	58.15
2EF532*-DA9DB-**	20.00	22.54	39.00	23.15	41.15
2EF518*-DA9DB-**	6.00	8.54	25.00	9.15	27.15
PART NUMBER	DIM. A	DIM. B	DIM. C	DIM. D	DIM. E

TO BE DEVELOPED

REV.	ECN. NO.	APPD.



PRIMARY (COMPONENT) SIDE




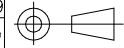
SECONDARY (SOLDER) SIDE

ADD-IN CARD EDGE-FINGER DIMENSIONS

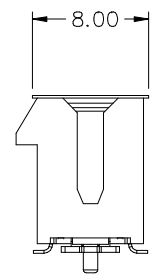
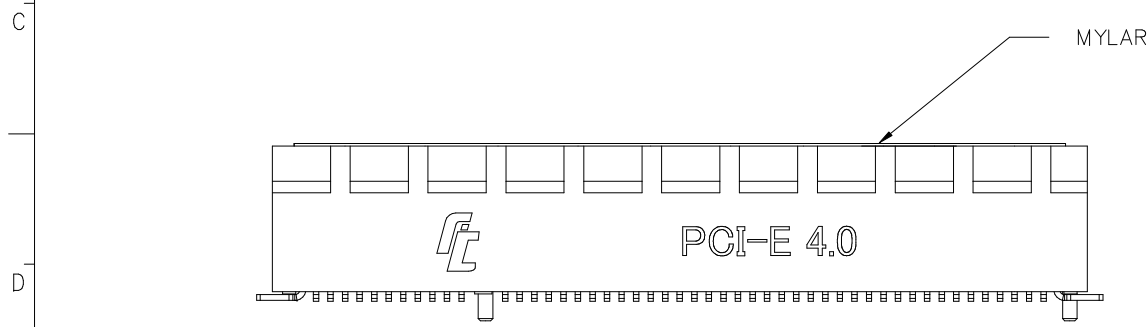
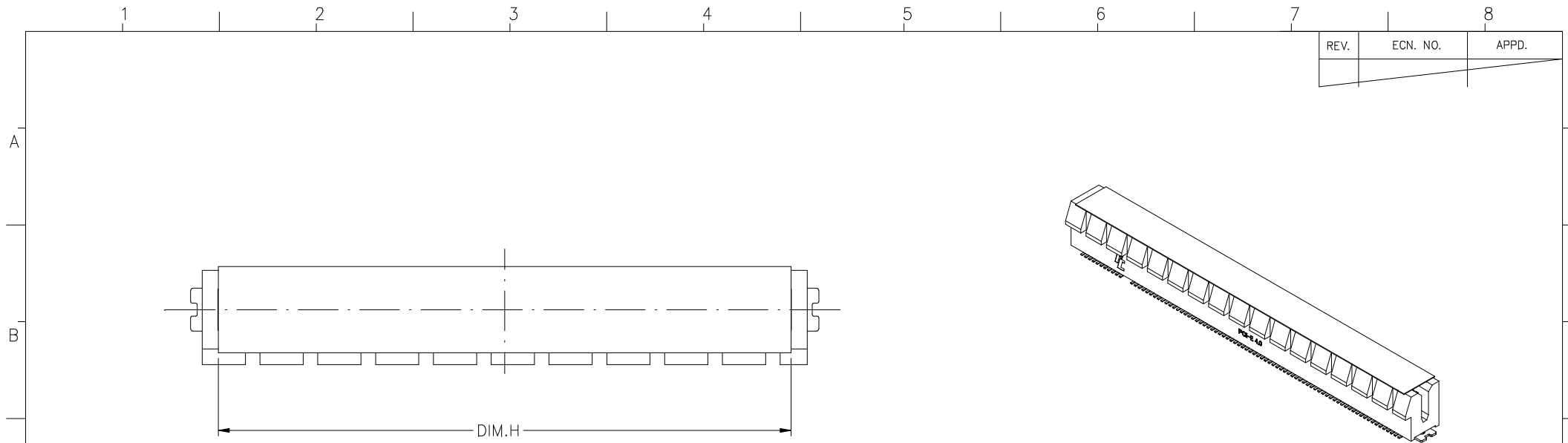
CONNECTOR LINK WIDTH	# POS REF	DIM. E	DIM. G	'C'
X1	36	6.00	8.15	B17
X4	64	20.00	22.15	B31
X8	98	37.00	39.15	B48


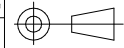
NOTES:

- ① NO TIE PERMITTED FROM CARD EDGE TO LEADING EDGE OF PAD FOR PINS A1 AND 'C'.
- ② CHAMFER EDGES MUST BE FREE OF CUTTING BURRS.

X.±	X.*±	UNITS mm	NAME<INTENDED USE> SMT TYPE PCI-E Gen4.0	 FOXCONN INTERCONNECT TECHNOLOGY LIMITED.
.X± 0.1	.X*± 2°	MAT'L N/A	PART NO.<INTENDED USE> 2EF5***-DA9DB-**	
.XX± 0.05	.XX*±	FINISH N/A	APPD: Davy Bu 06/27'19	TITLE: CUSTOMER DRAWING
.XXX±	.XXX*±	Q'TY N/A	CHKD: Johnny Tang 06/27'19 DRAW: Qin Teng 06/27'19	DWG NO.: 303-0000-****
<small>THESE DRAWINGS AND SPECIFICATIONS ARE THE PROPERTY OF FOXCONN INTERCONNECT TECHNOLOGY LIMITED AND SHALL NOT BE REPRODUCED, COPIED OR USED IN ANY MANNER WITHOUT THE PRIOR WRITTEN CONSENT OF FOXCONN INTERCONNECT TECHNOLOGY LIMITED.</small>				SCALE SHEET REV. N/A 2/4 X2

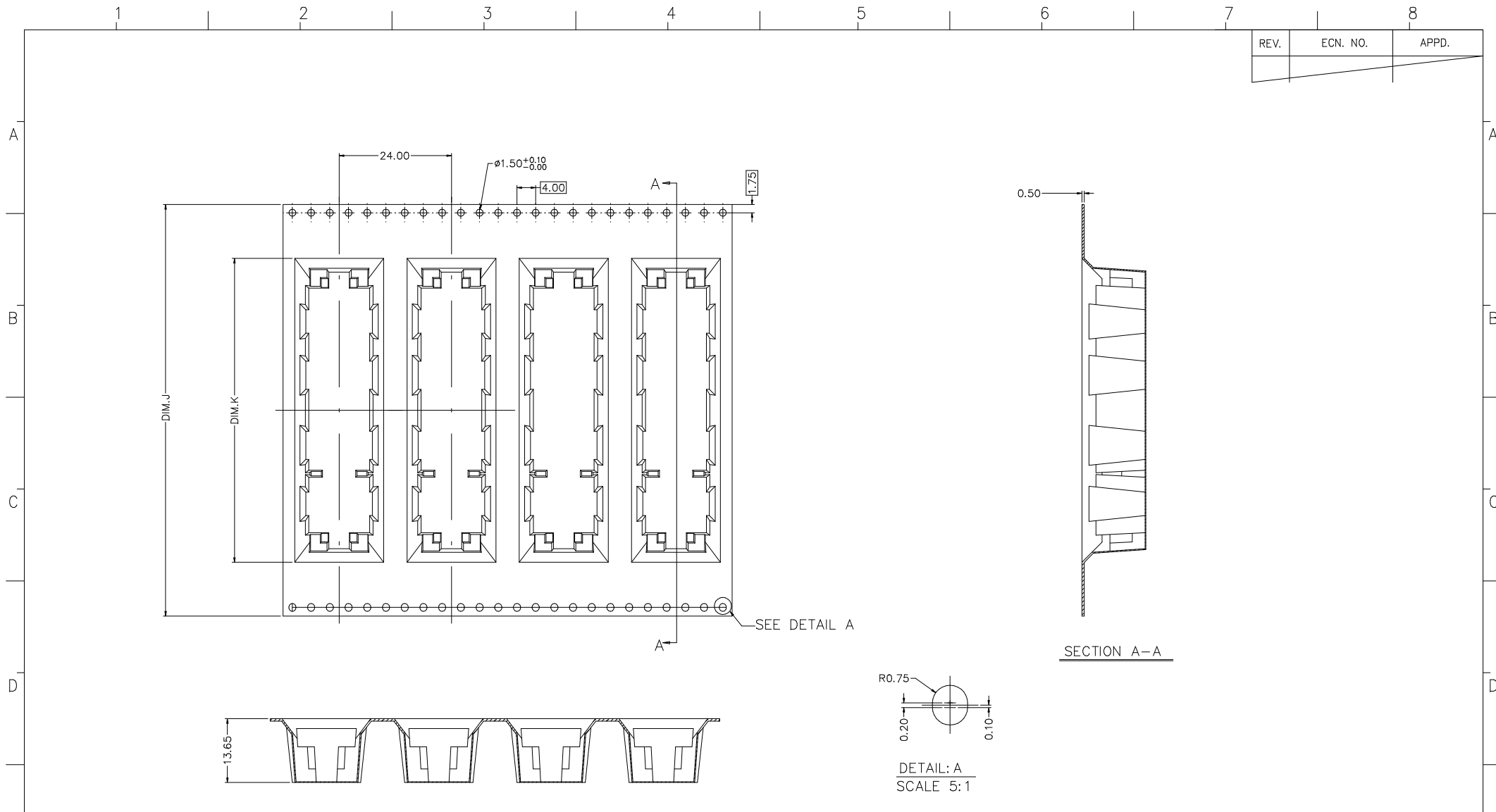
REV.	ECN. NO.	APPD.



X.±	X.*±	UNITS mm	NAME<INTENDED USE> SMT TYPE PCI-E Gen4.0	 FIT FOXCONN INTERCONNECT TECHNOLOGY LIMITED.
.X±	.X*±	MAT'L N/A	PART NO.<INTENDED USE> 2EF5***-DA9DB-**	
.XX±	.XX*±	FINISH N/A	APPD: Davy Bu 06/27'19	TITLE: CUSTOMER DRAWING
.XXX±	.XXX*±		Q'TY N/A	CHKD: Johnny Tang 06/27'19 DRAW: Qin Teng 06/27'19
<small>THESE DRAWINGS AND SPECIFICATIONS ARE THE PROPERTY OF FOXCONN INTERCONNECT TECHNOLOGY LIMITED AND SHALL NOT BE REPRODUCED, COPIED OR USED IN ANY MANNER WITHOUT THE PRIOR WRITTEN CONSENT OF FOXCONN INTERCONNECT TECHNOLOGY LIMITED.</small>				SCALE SHEET REV. N/A 3/4 X2

2EF549*-DA9DB-**	53
2EF532*-DA9DB-**	36
2EF518*-DA9DB-**	22
PART NUMBER	DIM. H

REV.	ECN. NO.	APPD.



2EF549*-DA9DB-**	88.00	65.0
2EF532*-DA9DB-**	72.00	48.0
2EF518*-DA9DB-**	44.00	32.0
PART NUMBER	DIM. J	DIM. K

X.±	X.*±	UNITS mm	NAME<INTENDED USE> SMT TYPE PCI-E Gen4.0	 FIT FOXCONN INTERCONNECT TECHNOLOGY LIMITED.						
.X± 0.38	.X*±	MAT'L N/A	PART NO.<INTENDED USE> 2EF5***-DA9DB-**							
.XX± 0.25	.XX*±	FINISH N/A	APPD: Davy Bu 06/27'19	CLASS: <input type="checkbox"/> CONFIDENTIAL <input type="checkbox"/> SECRET <input checked="" type="checkbox"/> GENERAL						
.XXX±	.XXX*±	Q'TY N/A	CHKD: Johnny Tang 06/27'19	TITLE: CUSTOMER DRAWING						
<small>THESE DRAWINGS AND SPECIFICATIONS ARE THE PROPERTY OF FOXCONN INTERCONNECT TECHNOLOGY LIMITED AND SHALL NOT BE REPRODUCED, COPIED OR USED IN ANY MANNER WITHOUT THE PRIOR WRITTEN CONSENT OF FOXCONN INTERCONNECT TECHNOLOGY LIMITED.</small>			DRAW: Qin Teng 06/27'19	DWG NO.: 303-0000-****						
				<table border="1"> <tr> <td>SCALE</td> <td>SHEET</td> <td>REV.</td> </tr> <tr> <td>N/A</td> <td>4/4</td> <td>X2</td> </tr> </table>	SCALE	SHEET	REV.	N/A	4/4	X2
SCALE	SHEET	REV.								
N/A	4/4	X2								

X-ON Electronics

Largest Supplier of Electrical and Electronic Components

Click to view similar products for [Board to Board & Mezzanine Connectors](#) category:

Click to view products by [Foxconn](#) manufacturer:

Other Similar products are found below :

[589158040000018](#) [MDF7C-18P-2.54DSA\(55\)](#) [FCN-268F036-G/BD](#) [FCN-268M012-G/0D](#) [FCN-268M024-G/1D](#) [MIS-048-01-F-D-DP-K](#)
[832-10-034-10-001000](#) [FX4C-80S-1.27DSA](#) [93696-330](#) [224393](#) [FCN-235D050-G/C](#) [210-93-314-41-105000](#) [MDF7-40DP-2.54DSA\(55\)](#)
[55323-1519](#) [069159702701000](#) [101A10019X](#) [105061100000861+](#) [75140-7012](#) [87471-650](#) [1744382-4](#) [063209](#) [10124054-515LF](#) [68685-603](#)
[8-1616154-3](#) [541371078](#) [IL-WX-10PB-HF-B-E1000E](#) [FX23-40P-0.5SV15B](#) [FCN-214J100-G/0](#) [354184](#) [P50-028-DDS-TG](#) [53309-2471](#)
[54546-2071](#) [1586617-1](#) [504248-1210](#) [504248-2010](#) [1-1437355-2](#) [9159005551906](#) [NDS100-004-BF](#) [93696-730LF](#) [91922-31141LF](#) [505274-](#)
[3440](#) [501493-2410](#) [504208-3410](#) [505006-0811](#) [505274-2040](#) [202436-1600](#) [202477-0414](#) [71660-7580](#) [73420-5192](#) [360-10-107-00-001000](#)