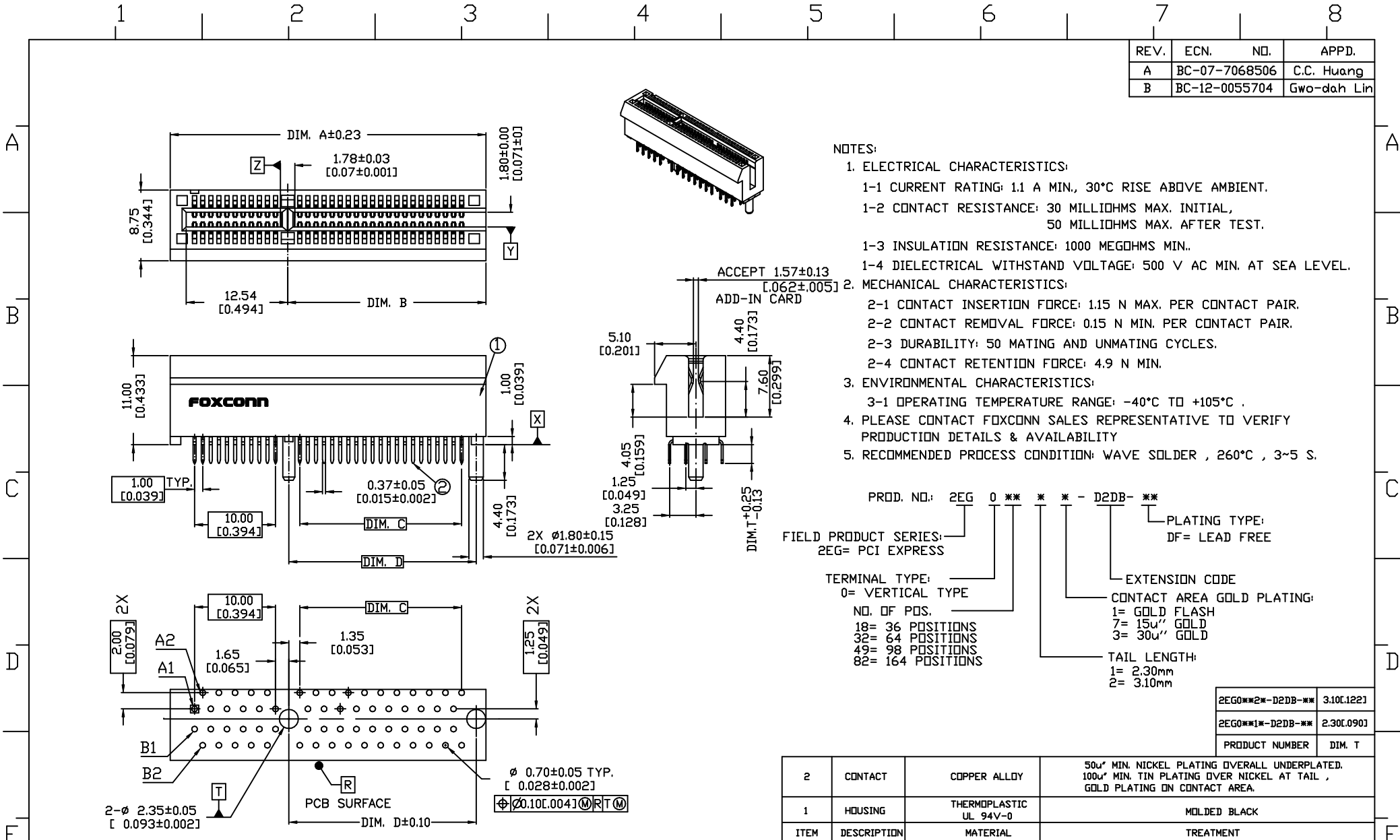


| REV. | ECN.          | NO. | APPD.       |
|------|---------------|-----|-------------|
| A    | BC-07-7068506 |     | C.C. Huang  |
| B    | BC-12-0055704 |     | Gwo-dah Lin |



- NOTES:
- ELECTRICAL CHARACTERISTICS:
    - 1-1 CURRENT RATING: 1.1 A MIN., 30°C RISE ABOVE AMBIENT.
    - 1-2 CONTACT RESISTANCE: 30 MILLIOHMS MAX. INITIAL, 50 MILLIOHMS MAX. AFTER TEST.
    - 1-3 INSULATION RESISTANCE: 1000 MEGOHMS MIN..
    - 1-4 DIELECTRICAL WITHSTAND VOLTAGE: 500 V AC MIN. AT SEA LEVEL.
  - MECHANICAL CHARACTERISTICS:
    - 2-1 CONTACT INSERTION FORCE: 1.15 N MAX. PER CONTACT PAIR.
    - 2-2 CONTACT REMOVAL FORCE: 0.15 N MIN. PER CONTACT PAIR.
    - 2-3 DURABILITY: 50 MATING AND UNMATING CYCLES.
    - 2-4 CONTACT RETENTION FORCE: 4.9 N MIN.
  - ENVIRONMENTAL CHARACTERISTICS:
    - 3-1 OPERATING TEMPERATURE RANGE: -40°C TO +105°C.
  - PLEASE CONTACT FOXCONN SALES REPRESENTATIVE TO VERIFY PRODUCTION DETAILS & AVAILABILITY
  - RECOMMENDED PROCESS CONDITION: WAVE SOLDER, 260°C, 3~5 S.

PROD. NO.: 2EG 0 \*\* \* \* - D2DB- \*\*

FIELD PRODUCT SERIES: 2EG= PCI EXPRESS

TERMINAL TYPE: 0= VERTICAL TYPE

NO. OF POS.:

- 18= 36 POSITIONS
- 32= 64 POSITIONS
- 49= 98 POSITIONS
- 82= 164 POSITIONS

PLATING TYPE: DF= LEAD FREE

EXTENSION CODE

CONTACT AREA GOLD PLATING:

- 1= GOLD FLASH
- 7= 15μ" GOLD
- 3= 30μ" GOLD

TAIL LENGTH:

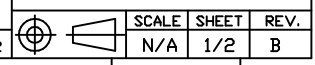
- 1= 2.30mm
- 2= 3.10mm

|                  |            |
|------------------|------------|
| 2EG0**2*-D2DB-** | 3.10[.122] |
| 2EG0**1*-D2DB-** | 2.30[.090] |
| PRODUCT NUMBER   | DIM. T     |

RECOMMENDED PCB LAYOUT

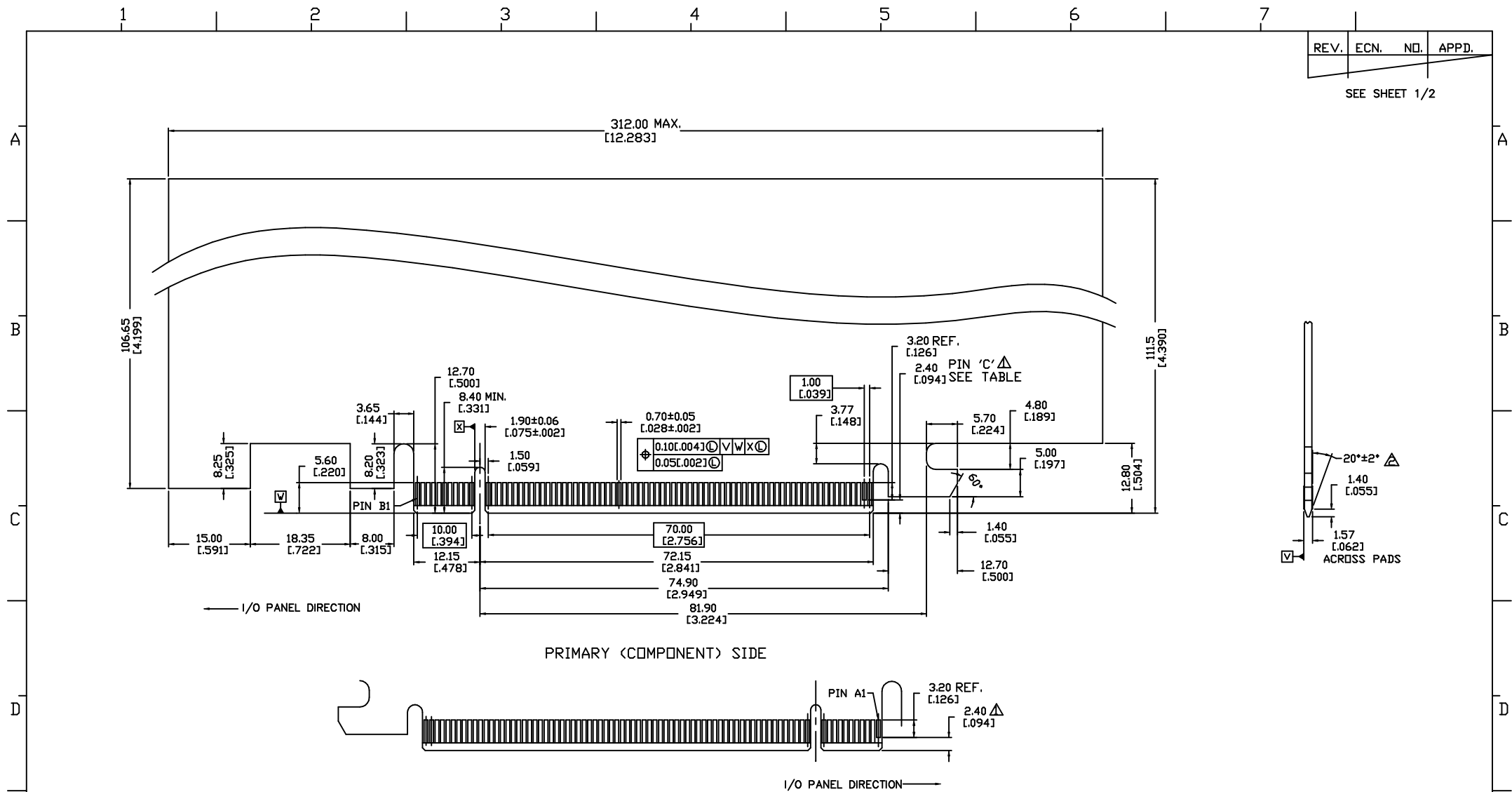
|                  |              |              |              |              |
|------------------|--------------|--------------|--------------|--------------|
| 2EG082**-D2DB-** | 89.00[3.504] | 74.50[2.933] | 70.00[2.756] | 73.15[2.880] |
| 2EG049**-D2DB-** | 56.00[2.205] | 41.50[1.634] | 37.00[1.457] | 40.15[1.581] |
| 2EG032**-D2DB-** | 39.00[1.535] | 24.50[0.965] | 20.00[0.787] | 23.15[0.911] |
| 2EG018**-D2DB-** | 25.00[0.984] | 10.50[0.413] | 6.00[0.236]  | 9.15[0.354]  |
| PRODUCT NUMBER   | DIM. A       | DIM. B       | DIM. C       | DIM. D       |

|  |             |                        |   |
|--|-------------|------------------------|---|
| 2  | CONTACT     | COPPER ALLOY           | 50μ" MIN. NICKEL PLATING OVERALL UNDERPLATED. 100μ" MIN. TIN PLATING OVER NICKEL AT TAIL, GOLD PLATING ON CONTACT AREA. |
| 1  | HOUSING     | THERMOPLASTIC UL 94V-0 | MOLDED BLACK  |
| ITEM   | DESCRIPTION | MATERIAL               | TREATMENT   |
| X.±  | X.±         | UNITS mm INCH          | NAME(INTENDED USE)  |
| .X±  | .X±         | MAT'L                  | VERTICAL T/H WITH OPEN END  |
| .XX±   | .XX±        | N/A                    | PART NO.(INTENDED USE)  |
| .XXX±  | .XXX±       | FINISH                 | 2EG0****-D2DB-**  |
| THESE DRAWINGS AND SPECIFICATIONS ARE THE PROPERTY OF HON HAI PRECISION IND. CO., LTD. AND SHALL NOT BE REPRODUCED, COPIED OR USED IN ANY MANNER WITHOUT THE PRIOR WRITTEN CONSENT OF HON HAI PRECISION IND. CO., LTD. |             | Q'TY                   | N/A   |
|  |             | APPD:                  | Gwo-Dah Lin 08/17/12  |
|  |             | CHKD:                  | G-X Niu 08/17/12  |
|  |             | DR:                    | YANG XUE 08/17/12   |
|  |             | SCALE                  | N/A   |
|  |             | SHEET                  | 1/2   |
|  |             | REV.                   | B   |



| REV. | ECN. | NO. | APPD. |
|------|------|-----|-------|
|------|------|-----|-------|

SEE SHEET 1/2



PRIMARY (COMPONENT) SIDE

SECONDARY (SOLDER) SIDE

ADD-IN CARD EDGE-FINGER DIMENSIONS

|           |       |
|-----------|-------|
| CONNECTOR | 'C' Δ |
| 16 PORT   | B81   |

NOTES:

- Δ NO TIE PERMITTED FROM CARD EDGE TO LEADING EDGE OF PAD FOR PINS A1 AND 'C'.
- △ CHAMFER EDGES MUST BE FREE OF CUTTING BURRS.

|  |         |        |            |                               |   |
|--|---------|--------|------------|-------------------------------|---|
| X.±  | X°.±    | UNITS  | mm<br>INCH | NAME (INTENDED USE)           | <b>FOXCONN</b><br>HDN HAI PRECISION IND. CO.,LTD.<br>TAIPEI, TAIWAN, R.O.C. |
| .X± 0.25<br>[.010]   | .X°.±   | MAT'L  | N/A        | VERTICAL T/H<br>WITH OPEN END |   |
| .XX± 0.13<br>[.005]  | .XX°.±  |        |            | PART NO. (INTENDED USE)       | TITLE:  |
| .XXX±  | .XXX°.± | FINISH | N/A        | 2EG0****-D2DB-**              | PCI Express<br>CUSTOMER DRAWING   |
| THESE DRAWINGS AND SPECIFICATIONS ARE THE PROPERTY OF HDN HAI PRECISION IND. CO., LTD. AND SHALL NOT BE REPRODUCED, COPIED OR USED IN ANY MANNER WITHOUT THE PRIOR WRITTEN CONSENT OF HDN HAI PRECISION IND. CO., LTD. |         |        |            | APPD:                         | DWG NO.:  |
|  |         | Q/TY   | N/A        | Gwo-Dah Lin 08/17/12          | 303-0000-1569   |
|  |         |        |            | CHKD:                         | SCALE SHEET REV.  |
|  |         |        |            | DR: YANG XUE 08/17/12         | N/A 2/2 B   |

## X-ON Electronics

Largest Supplier of Electrical and Electronic Components

*Click to view similar products for [Foxconn](#) manufacturer:*

Other Similar products are found below :

[AS0A821-H2RB-7H](#) [PE41897-01NK5-1H](#) [JFM3811J-G140-4F](#) [QT012206-1031-2H](#) [UC11123-11KB-4F](#) [UEA11123-8EZ3-4H](#) [2EG04927-D2LN-DF](#) [SJ05201-A0](#) [UEA11123-QHD6-4H](#) [UB1112C-8FDE-4F](#) [3H993321-4M41-01H](#) [ATF5883-A2B30-2F](#) [ATF5883-A2B20-2F](#) [WNMBL60-1NNK0-EH](#) [WNMBP06-01NK0-EH](#) [HM3505E-P1](#) [AH58897-T2B20-3F](#) [DZ11AA1-H5A7-4F](#) [ASAA821-H4SB5-7H](#) [PE36473-01NK3-1H](#) [PE36473-01NK4-1H](#) [QH11121-DBT1-4F](#) [BBH1231-C1000-7H](#) [ATH4017-H3B-4F](#) [3S1020F3-AD4-4F](#) [2EF5B57-DA9DN-5F](#) [UEA01123-4FH1-4H](#) [2EM5407-B19BL-8F](#) [LU11683-B007-9H](#) [HB3106F](#) [LDH2363-33N20-7H](#) [ATH4017-H9LE-4F](#) [UEA1112C-UHS6-4F](#) [2EF5497-DA9DB-8H](#) [LDP2683-13A50-9H](#) [JPD1030-M301-7F](#) [2E0BC21-S64BM-7H](#) [2EZ00161-PH2-4F](#) [HC11051-D4](#) [LD1807F-S54TD](#) [2EG24927-D5D1-JF](#) [ASOB226-S52Q-7H](#) [AS0A626-HASN-7H](#) [HF5504E-P1LH](#) [JA634C-40ADA5B-7H](#) [AS0A621-H2R6-7H](#) [QT002206-4131-3H](#) [JFM24U11-21C3-4F](#) [EH06003-DAW-DF](#) [AS0B221-S52Q-7H](#)