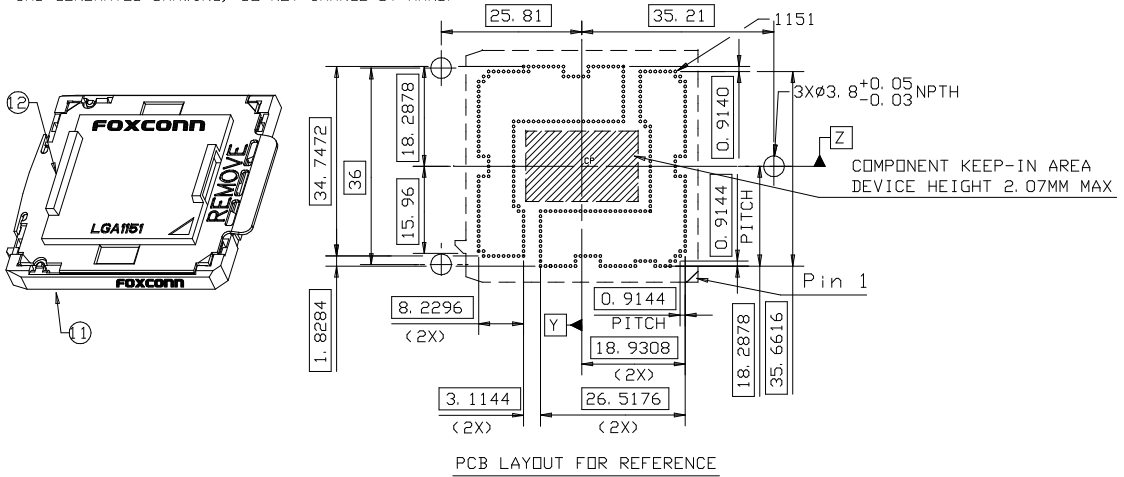
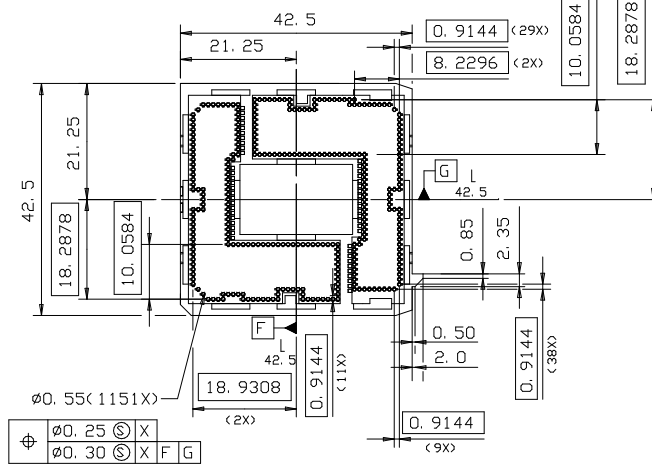
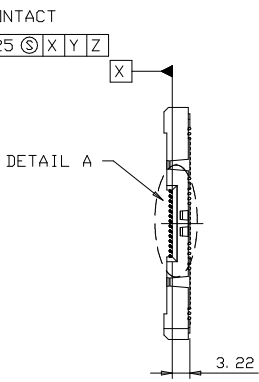
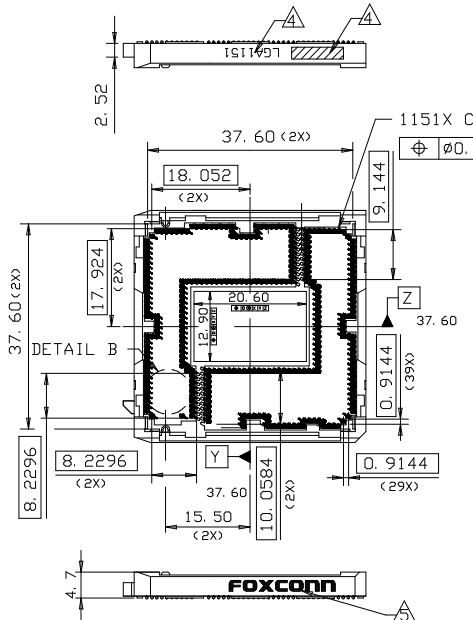
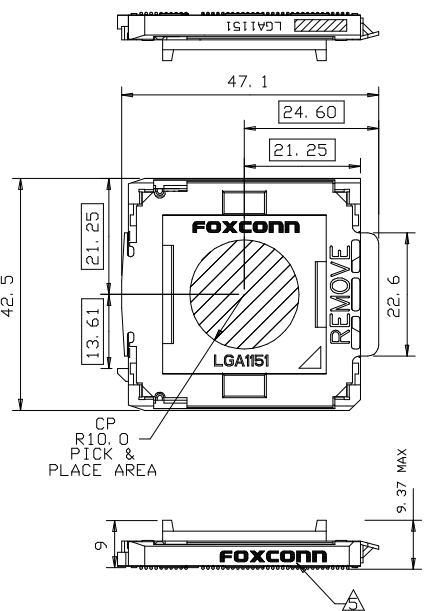
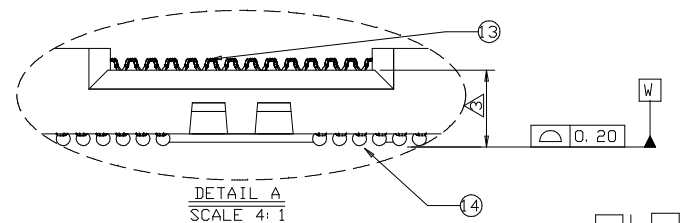


CAD GENERATED DRAWING, DO NOT CHANGE BY HAND.

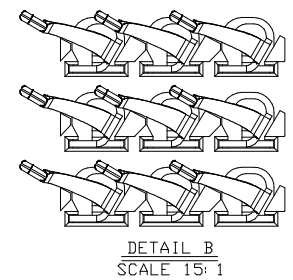
REV.	ECN. NO.	APPD.
A	BC-14-0031104	Dickie H



- NOTES:
- DIMENSIONING AND TOLERANCING PER ASME Y14.5M-1994.
  - MATERIAL: SOCKET BODY LCP, UL94V-0, BLACK;  
CONTACT Cu Ni ALLOY, 1u" MIN. Au PLATING OVER 50u" MIN.  
Ni UNDERPLATING ON CONTACT AREA;  
PICK-UP CAP LCP, UL94V-0, BLACK;  
SOLDERBALL LEAD FREE Sn/Ag/Cu BALL;
  - THICKNESS OF SOCKET (FROM SEATING PLANE TO THE BOTTOM OF SOLDER BALLS):  
3.4±0.20mm AFTER SOLDERING PROCESS
  - DATE CODE & SOCKET NAME IS LOCATED APPROXIMATELY.
  - FOXCONN LOGO IS LOCATED APPROXIMATELY.
  - HARMFUL MATERIAL CONTROL PLEASE FOLLOWS DDC. NO. 'EPI12';  
(COMPLIANT TO RoHS)
  - FOR GENERAL BOARD DESIGN, PLEASE REFER TO THE THERMAL AND MECHANICAL DESIGN GUIDELINES (TMDG) PROVIDED BY INTEL CORPORATION
  - THE CONCENTRATIONS OF Br&Cl CAN SATISFY REQUIREMENTS OF HALOGEN-FREE IN DOCUMENT 'EPI12'
  - PLEASE CONTACT FOXCONN SALES REPRESENTATIVE TO VERIFY PRODUCT DETAILS & AVAILABILITY.



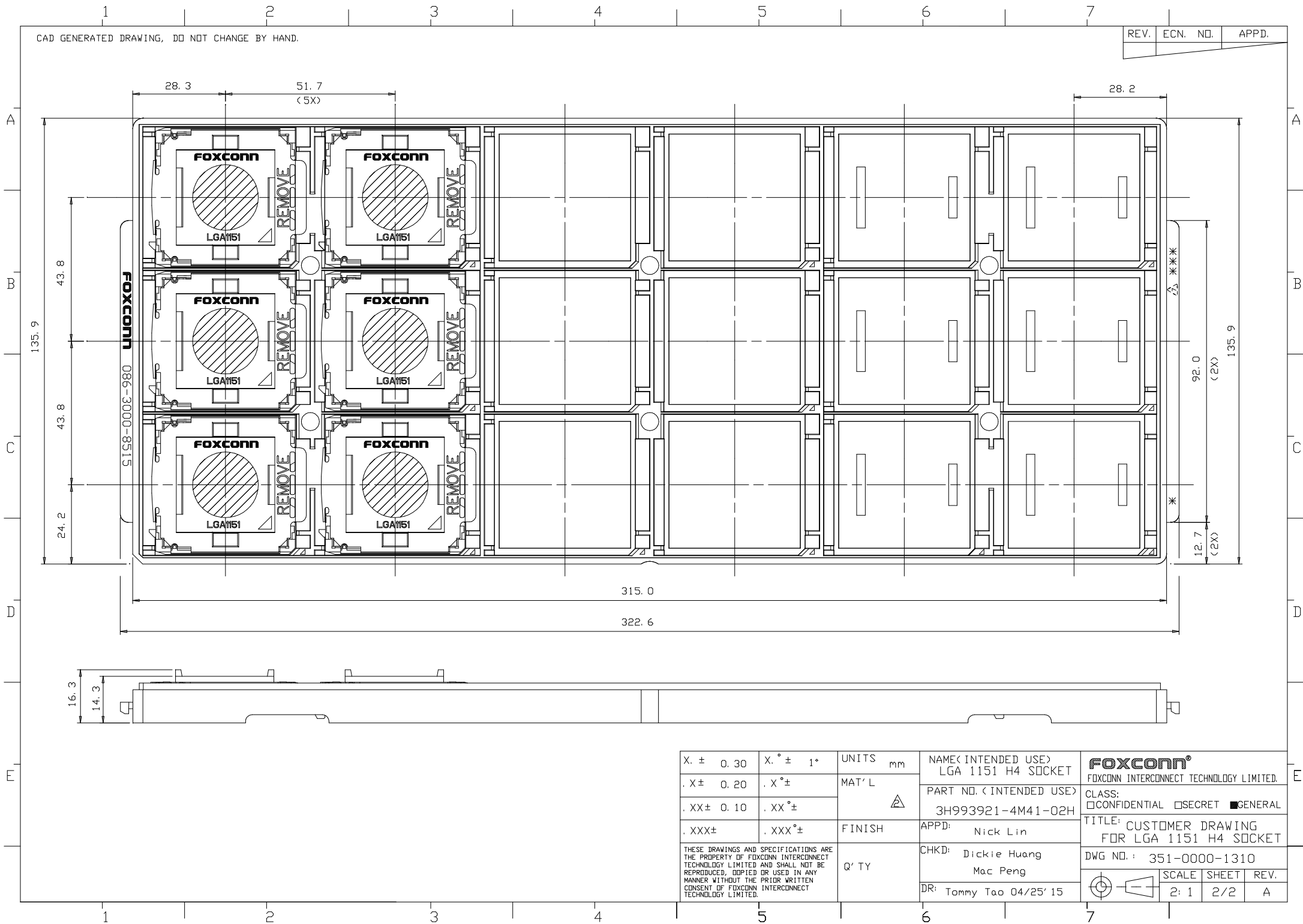
COMPONENT LIST<3H993921-4M41-02H>		
ITEM	DESCRIPTION	Q' TY
①	SOCKET BODY	1
②	PICK & PLACE CAP	1
③	CONTACT	1151
④	SOLDER BALL	1151



X. ± 0.30	X. ° ± 1°	UNITS	mm	NAME<INTENDED USE> LGA 1151 H4 SOCKET	<b>FOXCONN</b> FOXCONN INTERCONNECT TECHNOLOGY LIMITED.	
. X ± 0.20	. X ° ±	MAT'L		PART NO.<INTENDED USE> 3H993921-4M41-02H		
. XX ± 0.10	. XX ° ±			APPD: Nick Lin	CLASS: <input type="checkbox"/> CONFIDENTIAL <input type="checkbox"/> SECRET <input checked="" type="checkbox"/> GENERAL	
. XXX ±	. XXX ° ±	FINISH		CHKD: Dickie Huang	TITLE: CUSTOMER DRAWING FOR LGA 1151 H4 SOCKET	
THESE DRAWINGS AND SPECIFICATIONS ARE THE PROPERTY OF FOXCONN INTERCONNECT TECHNOLOGY LIMITED AND SHALL NOT BE REPRODUCED, COPIED OR USED IN ANY MANNER WITHOUT THE PRIOR WRITTEN CONSENT OF FOXCONN INTERCONNECT TECHNOLOGY LIMITED.				DR: Tommy Tao 04/25/15	DWG NO.: 351-0000-1310	
				Q' TY	SCALE	SHEET
				2: 1	1/2	A

CAD GENERATED DRAWING, DO NOT CHANGE BY HAND.

REV.	ECN. NO.	APPD.



X. ± 0.30	X. ° ± 1°	UNITS	mm	NAME< INTENDED USE > LGA 1151 H4 SOCKET	<b>FOXCONN®</b> FOXCONN INTERCONNECT TECHNOLOGY LIMITED.		
.X ± 0.20	.X ° ±	MAT'L		PART NO. < INTENDED USE > 3H993921-4M41-02H			
.XX ± 0.10	.XX ° ±			APPD: Nick Lin	CLASS: <input type="checkbox"/> CONFIDENTIAL <input type="checkbox"/> SECRET <input checked="" type="checkbox"/> GENERAL		
.XXX ±	.XXX ° ±	FINISH		CHKD: Dickie Huang Mac Peng	TITLE: CUSTOMER DRAWING FOR LGA 1151 H4 SOCKET		
THESE DRAWINGS AND SPECIFICATIONS ARE THE PROPERTY OF FOXCONN INTERCONNECT TECHNOLOGY LIMITED AND SHALL NOT BE REPRODUCED, COPIED OR USED IN ANY MANNER WITHOUT THE PRIOR WRITTEN CONSENT OF FOXCONN INTERCONNECT TECHNOLOGY LIMITED.				Q' TY	DWG NO. : 351-0000-1310		
					DR: Tommy Tao 04/25' 15	SCALE	SHEET
					2: 1	2/2	A

## X-ON Electronics

Largest Supplier of Electrical and Electronic Components

*Click to view similar products for [IC & Component Sockets](#) category:*

*Click to view products by [Foxconn](#) manufacturer:*

Other Similar products are found below :

[614-DG5](#) [670](#) [672](#) [673](#) [712-93-120-41-001000](#) [714-93-104-31-018000](#) [8-1437531-4](#) [8150-6P10](#) [835-43-014-10-001000](#) [851-41-006-10-001000](#) [851-43-008-20-001000](#) [851-43-014-20-001000](#) [851-93-006-20-001000](#) [851-93-010-20-001000](#) [853-43-020-10-001000](#) [86.010.0053.0](#) [116-43-308-41-007000](#) [121-13-318-41-001000](#) [121-13-320-41-001000](#) [121-13-308-41-001000](#) [123-43-314-41-801000](#) [123-43-420-41-001000](#) [122-13-316-41-001000](#) [123-13-624-41-001000](#) [123-43-306-41-001000](#) [12-3513-11](#) [123-91-320-41-001000](#) [126-43-310-41-002000](#) [AKSUN](#) [37V-T](#) [1437503-9](#) [1437504-1](#) [APA-640-G-P](#) [146-44-308-41-013000](#) [146-43-308-41-012000](#) [160-10-308-00-001000](#) [160-40-320-00-001000](#) [214-99-306-01-670800](#) [2-382761-4](#) [2-5331677-4](#) [2-640360-3](#) [2801-3-00-44-00-00-07-0](#) [940-44-052-17-400004](#) [299-83-314-11-001101](#) [1986000-2](#) [2103331641101000](#) [210-43-320-41-001000](#) [210-99-628-41-001000](#) [2-1437504-6](#) [2-1437515-5](#) [2-1437531-2](#)