

| | |
|-----------------------|--|
| P/N | LE1807*-****-** |
| NAME(NTENDED USE) | ISATA3 |
| PART NO.(NTENDED USE) | |
| LE18 SERIAL | |
| DWG NO.: | 303-0000-2659 |
| TITLE: | CUSTOMER DRAWING, 7 POS. VERTICAL T/H, SHROUDED PLUG |
| APPD: | Yihsin Chen |
| CHKD: | Wofe Liu |
| DR: | Ben.Luo 6/01'10 |
| SCALE | N/A |
| SHEET | 1/1 |
| REV. | A |

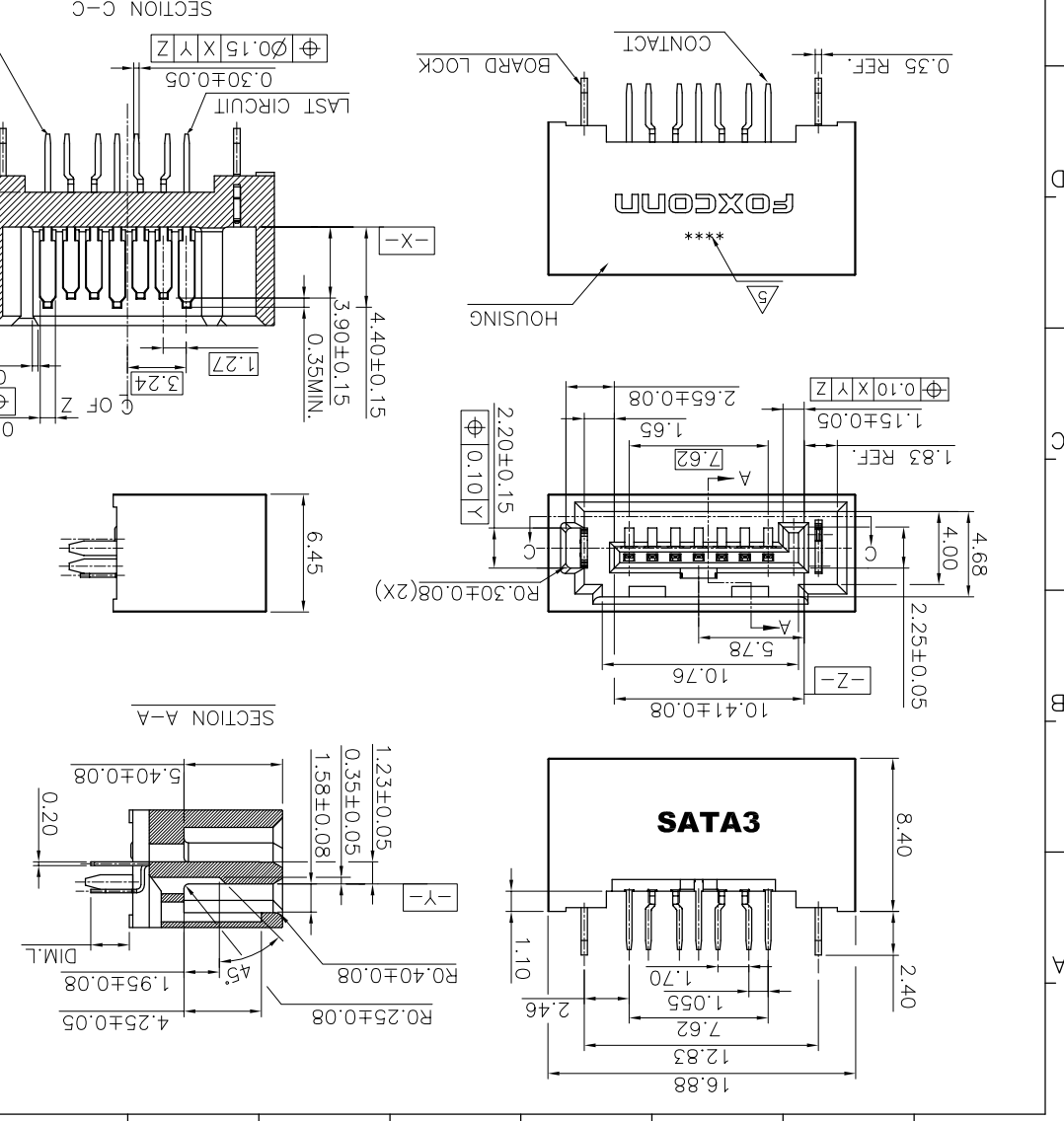
| | | |
|------|-------------|-------------|
| REV. | ECN. No. | APPD. |
| A | BC100059083 | Yihsin Chen |

1. DIMENSIONS SHALL BE INTERPRETED PER ASME Y14.5-2009
2. ALL DIMENSIONS ARE MILLIMETERS.
3. SPECIFICATIONS OF PRODUCT ARE SHOWN ON DRAWING "303-0300-2659".
4. MATERIALS OF PARTS ARE SHOWN ON DRAWING "303-0500-2659".
5. DATE CODE: "****" REFER TO FOXCONN'S DOC "SQ-380-070".
6. PRODUCT NO. MATRIX : PLEASE REFER TO DRAWING "303-0500-2659".
7. HARMFUL MATERIAL CONTROL PLEASE FOLLOW FOXCONN'S "EP112".
8. PLEASE CONTACT FOXCONN SALES REPRESENTATIVE TO VERIFY PRODUCT DETAILS & AVAILABILITY.

| | | | |
|--------|----------|--------|----|
| X ± | X ± 1° | UNITS | mm |
| X ± | X ± | MATL | |
| X ± | X ± 0.25 | | |
| .XXX ± | .XX ± | FINISH | |
| .XXX ± | .XX ± | | |
| Q'TY | | | |

| | |
|-----------------------|--|
| UNITS | mm |
| NAME(NTENDED USE) | ISATA3 |
| PART NO.(NTENDED USE) | |
| LE18 SERIAL | |
| DWG NO.: | 303-0000-2659 |
| TITLE: | CUSTOMER DRAWING, 7 POS. VERTICAL T/H, SHROUDED PLUG |
| APPD: | Yihsin Chen |
| CHKD: | Wofe Liu |
| DR: | Ben.Luo 6/01'10 |
| SCALE | N/A |
| SHEET | 1/1 |
| REV. | A |

| | | | |
|--------|----------|--------|----|
| X ± | X ± 1° | UNITS | mm |
| X ± | X ± | MATL | |
| X ± | X ± 0.25 | | |
| .XXX ± | .XX ± | FINISH | |
| .XXX ± | .XX ± | | |
| Q'TY | | | |



RECOMMENDED P.C.B. LAYOUT

6

5

4

3

2

1

7

6

5

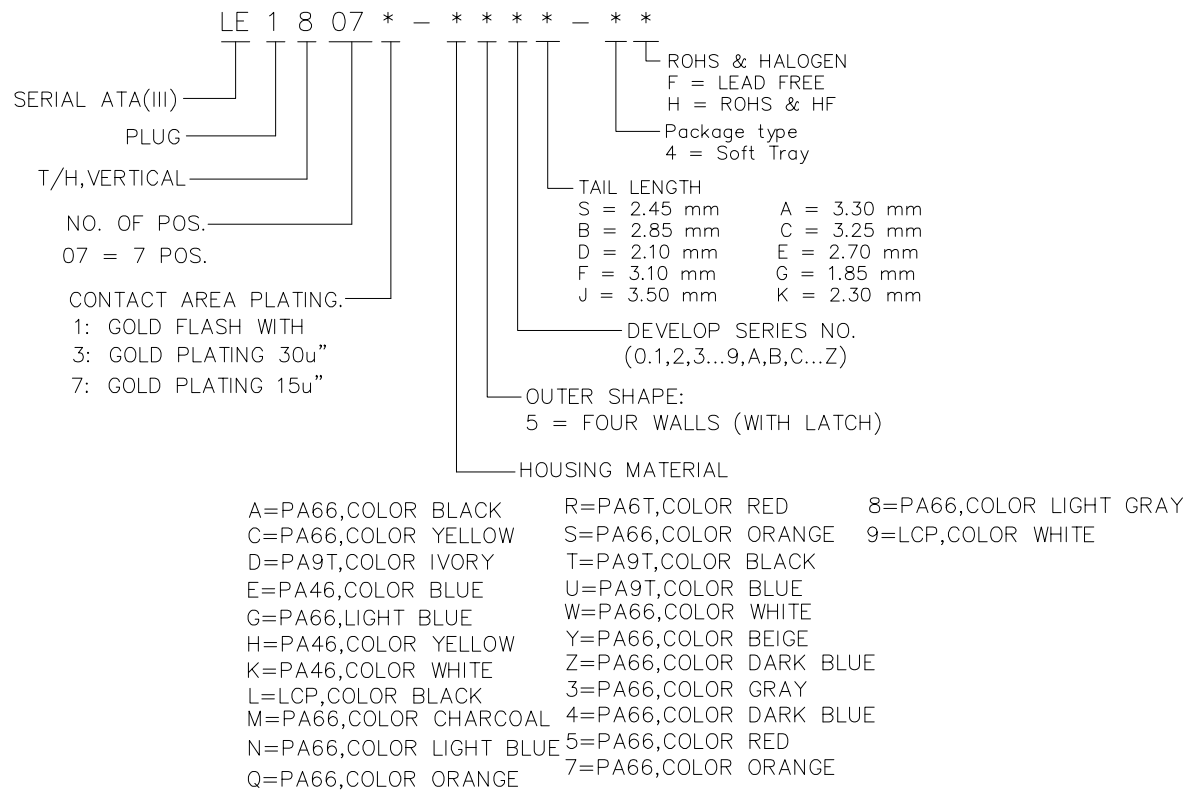
4

3

2

1

- NOTE : 1.HARMFUL MATERIAL CONTROL PLEASE FOLLOW FOXCONN'S DOC. "EPI12".
 2.PLEASE CONTACT FOXCONN SALES REPRESENTATIVE TO VERIFY PRODUCT
 DETAILS & AVAILABILITY.
 3.PRODUCT NO. MATRIX:



4. THE CONCENTRATIONS OF BR&CL CAN SATISY THE REQUIREMENTS
 OF HALOGEN FREE IN DOCUMENT "EPI12".

| | |
|--|--|
| FOXCONN HON HAI PRECISION IND. CO.,LTD. TAIPEI, TAIWAN, R.O.C. | |
| APPD. : Yihsin Chen | TITLE : MATERIAL SHEET T/H, VERTICAL,7 POS., PLUG |
| CHKD. : Wolfe Liu | PROD. SERIES: LE1807*-****-** |
| DR. : Ben.Luo 6/01'10 | DWG. NO : 303-0500-2659 |
| | REV. : A SHEET : 1/1 |

| | | |
|------|-------------|-------------|
| A | BC100060390 | Yihsin Chen |
| REV. | ECN NO. | APPD. |

1-4. HARMFUL MATERIAL CONTROL PLEASE FOLLOW DOC. EPI12.

2. PERFORMANCE :

- 2-1. CURRENT RATING : 1.5 Amps MAX. PER PIN.
- 2-2. OPERATING TEMPERATURE : -55°C TO +85°C.

3. ELECTRICAL :

- 3-1. LOW LEVEL CONTACT RESISTANCE(DRY CIRCUIT) : 30 MILLIOHMS MAX. INITIAL.
- 3-2. DIELECTRIC WITHSTANDING VOLTAGE : 500 VAC. AT SEA LEVEL.
- 3-3. INSULATION RESISTANCE : 1000 MEGAOHMS MIN. INITIAL.

4. MECHANICAL :

- 4-1. INSERTION FORCE: EIA-364-13, 45N MAX. .
- 4-2. REMOVAL FORCE: EIA-364-13, 10N MIN. .
- 4-3. DURABILITY: 50 CYCLES

5. ENVIRONMENTAL :

- 5-1. PHYSICAL SHOCK: PASS EIA-364-27, CONDITION H.
- 5-2. VIBRATION: PASS EIA-364-28, CONDITION V TEST LETTER A.
- 5-3. HUMIDITY: PASS EIA-364-31, METHOD II TEST CONDITION A.

6. PLEASE CONTACT FOXCONN SALES REPRESENTATIVE TO VERIFY PRODUCT DETAILS & AVAILABILITY.

7. THE CONCENTRATIONS OF BR&CL CAN SATISY THE REQUIREMENTS OF HALOGEN FREE IN DOCUMENT "EPI12".

| | |
|--|--|
| FOXCONN HON HAI PRECISION IND. CO.,LTD. TAIPEI, TAIWAN, R.O.C. | |
| APPD. : Yihsin Chen | TITLE : SPECIFICATION, 7 POS. VERTICAL T/H, HOST PLUG, SATA |
| CHKD. : Wolfe Liu | PROD. SERIES : LE1807*-****-** |
| DR. : Ben.Luo 6/01'10 | DWG. No : 303-0300-2659 |
| | REV. : A SHEET : 1/1 |

| | | |
|------|-------------|-------------|
| A | BC100060375 | Yihsin Chen |
| REV. | ECN No. | APPD. |

X-ON Electronics

Largest Supplier of Electrical and Electronic Components

Click to view similar products for [Headers & Wire Housings](#) category:

Click to view products by [Foxconn](#) manufacturer:

Other Similar products are found below :

[95000-104TRLF](#) [10135584-644402LF](#) [DF62W-EP2022PCA](#) [95000-106TRLF](#) [DF62W-2022SCA](#) [DF62W-EP2022PC](#) [2203348](#) [DF62W-2022SC](#) [1084018](#) [1029039](#) [1084017](#) [802-10-012-10-002000](#) [1112640](#) [1112639](#) [891-007-9SS-BST1T](#) [000-34000](#) [0008550134](#) [0009482033](#) [0009507031](#) [57102-F02-18ULF](#) [57102-S06-03LF](#) [57202-S52-04LF](#) [PCN6-15S-2.5E](#) [0039019024](#) [58102-G61-06LF](#) [582553-1](#) [0009485154](#) [0009508121](#) [0022285053](#) [0050291907](#) [018731A](#) [LY20-4P-DT1-P1E-BR](#) [02.125.8002.8](#) [60101931](#) [60598-1 \(Cut Strip\)](#) [M1625-3R/100](#) [61062-3](#) [61082-181009](#) [CSU011177004](#) [636-1427](#) [638009-1](#) [641938-9](#) [641991-4](#) [644168-1](#) [644827-2](#) [647662-1](#) [65039-019ELF](#) [65692-001LF](#) [65781-018](#) [65781-047](#)