

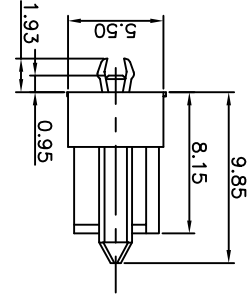
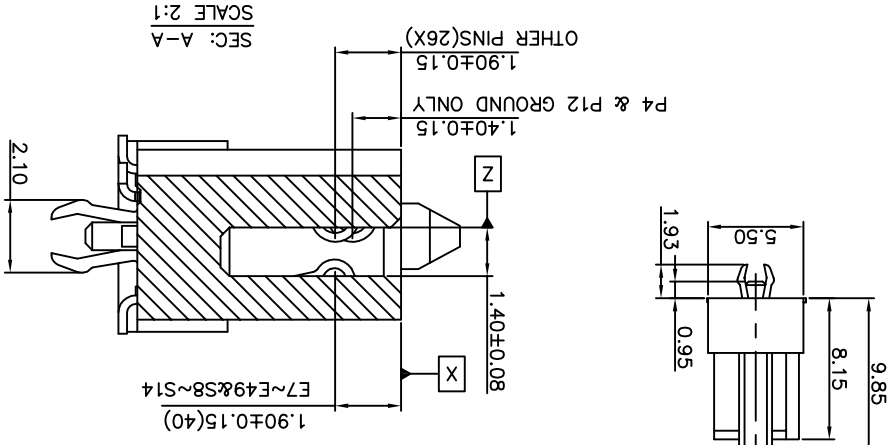
REV.	ECON. No.	APPD.
A	BC-11-0043665	Yhsin Chen
B	BC-12-0035993	Shin-Wei Hsiao

NOTES: UNLESS OTHERWISE SPECIFIED
 1. DIMENSIONS SHALL BE INTERPRETED PER ASME Y14.5-2009

- 2. DIMENSIONS MARKED ∇ TO BE CONTROLLED BY QC.
- 3. CONTACT RETENTION FORCE : 0.3 KG MIN. PER PIN.
- 4. HARMFUL MATERIAL CONTROL PLEASE FOLLOW FOXCONN'S DOC. "EP12".
- 5. DATE CODE: PLEASE REFER TO FOXCONN'S DOC. "SQ-380-070".
- 6. THE "FOXCONN" LOGO IS LOCATED APPROX. AS SHOWN.
- 7. SPEC. OF PROD. ARE SHOWN ON DRAWING 303-0300-2784
- 8. MATERIALS OF PARTS ARE SHOWN ON PRODUCT NO. MATRIX
- 9. THE CONCENTRATIONS OF Br&I CAN SATISFY THE REQUIREMENTS OF HALOGEN-FREE IN DOCUMENT EP12.
- 10. PRODUCT NO. MATRIX :

LU 2 5 68 * - A 0 0 1 - * H
 DEVICE BAY & SERIAL ATA
 MATING END TYPE
 2 = RECEPTACLE
 MOUNTING END TYPE
 5=VERTICAL,SMT

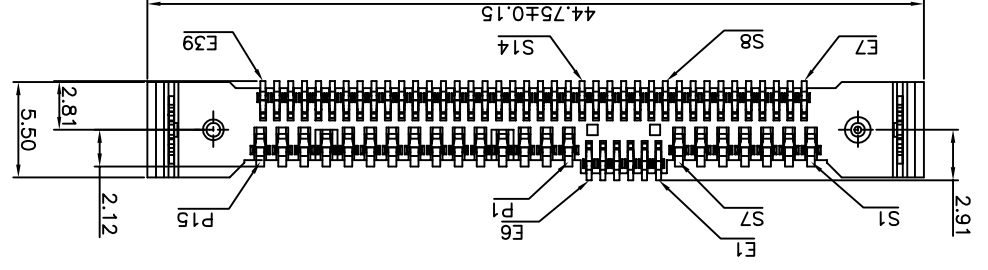
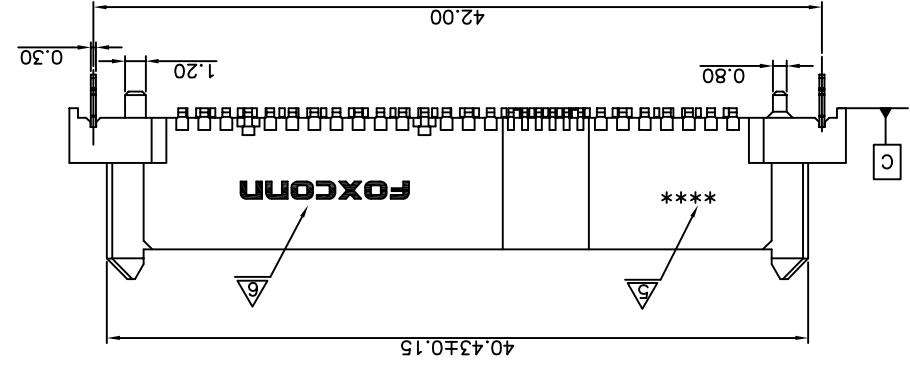
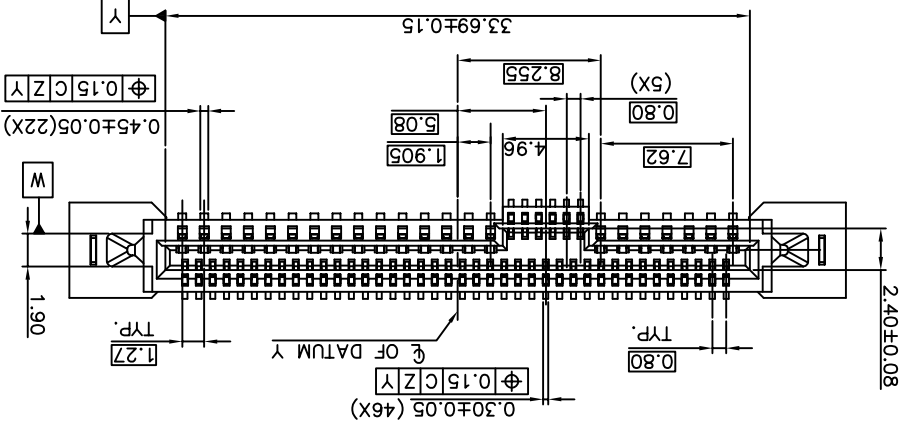
- 1 = GOLD FLASH WITH ROHS COMPLIANT
- 3 = 30u" GOLD WITH ROHS COMPLIANT
- 6 = 10u" GOLD WITH ROHS COMPLIANT
- 7 = 15u" GOLD WITH ROHS COMPLIANT
- H=HALOGEN FREE
- PACKAGE TYPE: 4= SOFT TRAY
- 9= TAPE REEL & CAP
- DEVELOP SERIES NO: (0,1,2,...)
- CONTACT AREA PLATING.



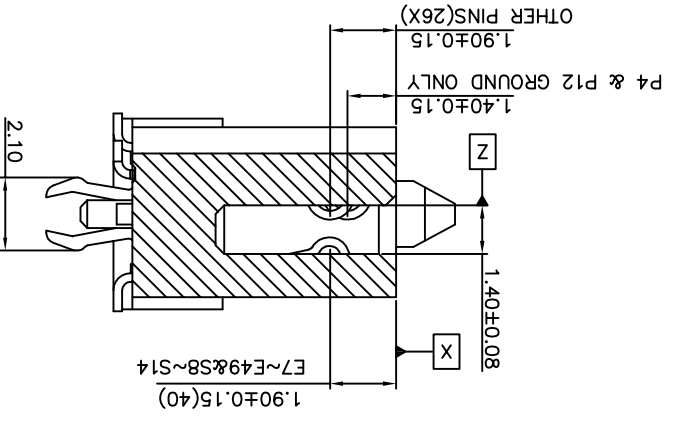
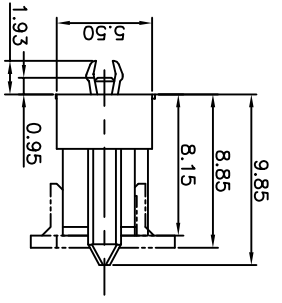
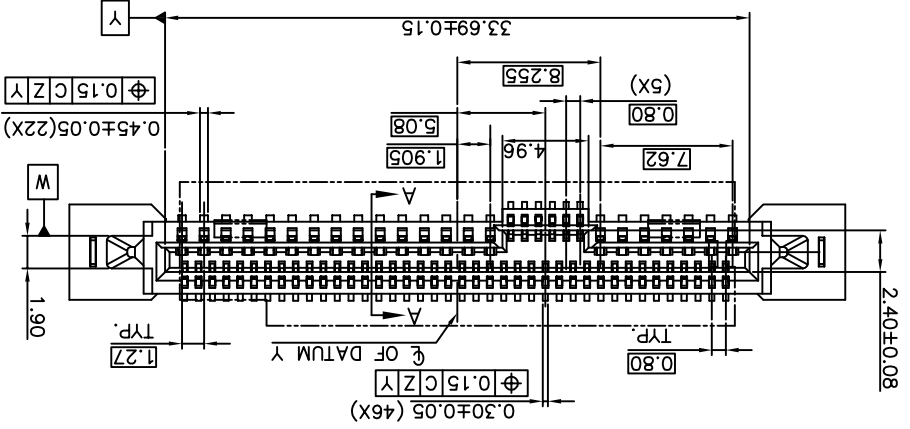
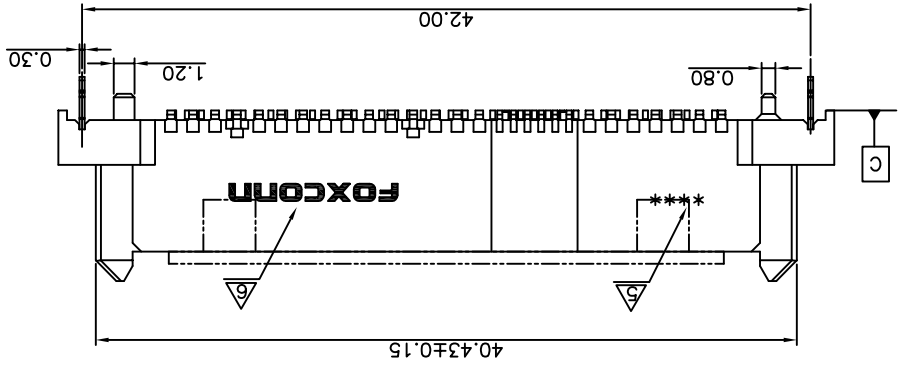
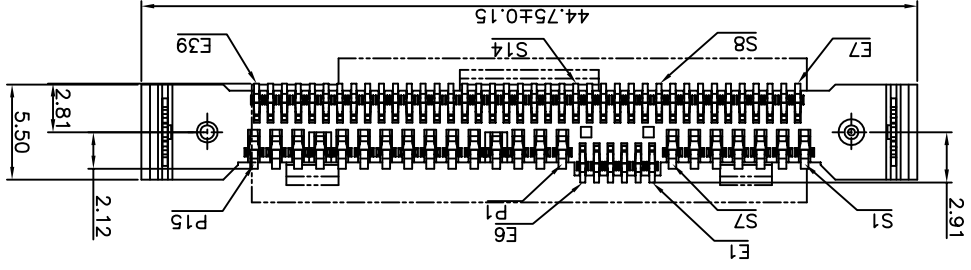
NAME(INTENDED USE)	PCI-e SAS	UNITS	mm
PART NO.(INTENDED USE)	LU2568*-A001-*H	FINISH	
APPD.	Shin-Wei Hsiao	Q'TY	
CHKD:	Yusan Hsiao		
DR:	Zou Jiantong 5/10/12		

THESE DRAWINGS AND SPECIFICATIONS ARE THE PROPERTY OF HON HAI PRECISION IND. CO., LTD. AND SHALL NOT BE REPRODUCED, COPIED OR USED IN ANY MANNER WITHOUT THE PRIOR WRITTEN CONSENT OF HON HAI PRECISION IND. CO., LTD.

P/N	LU2568*-A001-4H
TITLE:	CUSTOMER DRAWING
DWG NO.:	303-0000-2784
SCALE	1:1
SHEET	1/4
REV.	B



8 7 6 5 4 3 2 1 A B C D E



X±	X±	X±	X±	X±	X±
0.10	0.15	0.20	0.10	0.15	0.20
XXX±	XX±	X±	XX±	XX±	XXX±
FINISH	QTY	UNITS	NAME(INTENDED USE)	PCIE SAS	P/N
LU2568*-A001-*H	SHIN-WEI HSIAO	mm	PCI-e SAS	PCI-e SAS	LU2568*-A001-9H
APPD: SHIN-WEI HSIAO	CHKD: YUSUN HSIAO	DR: ZOU JIANLONG	DWG NO.: 303-0000-2784	TITLE: CUSTOMER DRAWING	SCALE: 2/4
				V/T, SMT, RECEPTACLE	REV. B
				HON HAI PRECISION IND. CO.,LTD.	
				TAIPEI, TAWAN, R.O.C.	
				FOXCONN	

REV.	ECN. No.	APPD.



THESE DRAWINGS AND SPECIFICATIONS ARE THE PROPERTY OF HON HAI PRECISION IND. CO., LTD. AND SHALL NOT BE REPRODUCED, COPIED OR USED IN ANY MANNER WITHOUT THE PRIOR WRITTEN CONSENT OF HON HAI PRECISION IND. CO., LTD.

NAME(INTENDED USE) PCIE SAS

PART NO.(INTENDED USE) LU2568*-A001-*H

APPD: SHIN-WEI HSIAO

CHKD: YUSUN HSIAO

DR: ZOU JIANLONG

DWG NO.: 303-0000-2784

TITLE: CUSTOMER DRAWING

V/T, SMT, RECEPTACLE

HON HAI PRECISION IND. CO.,LTD.

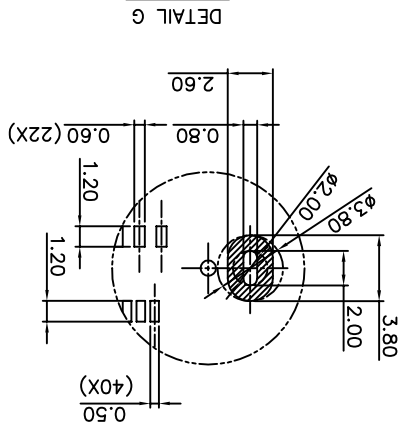
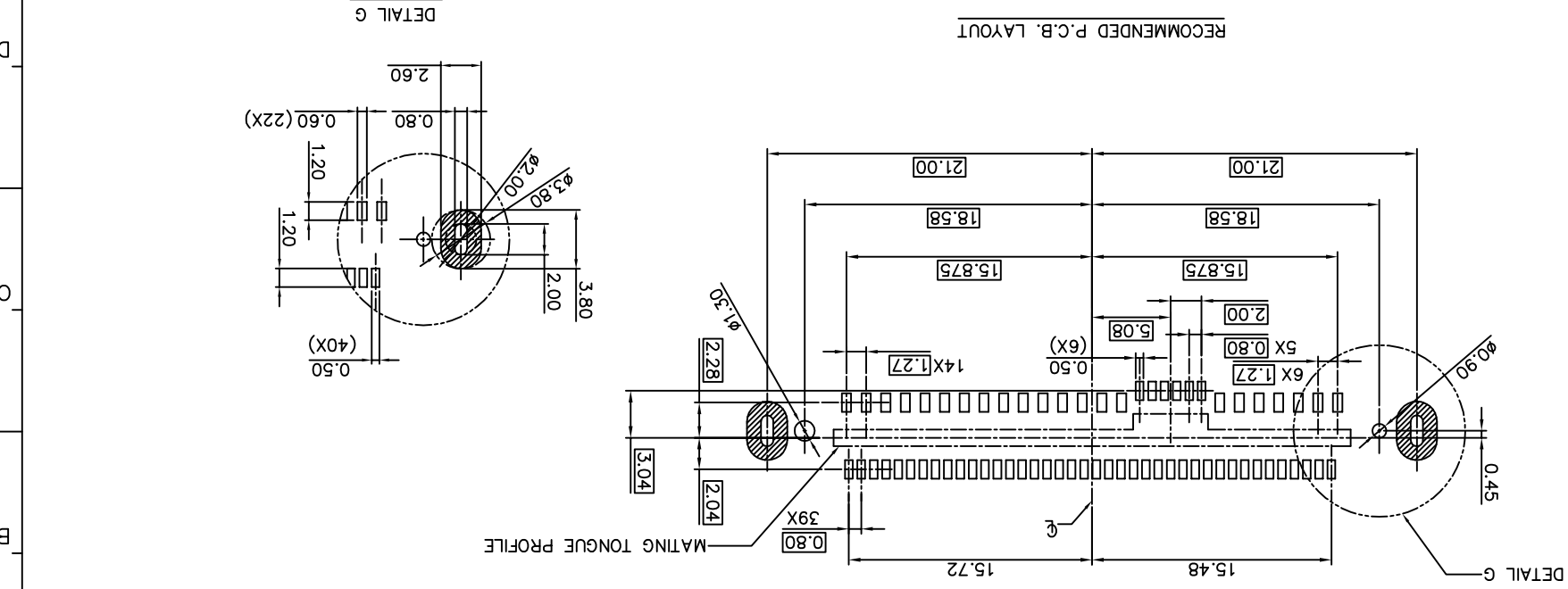
TAIPEI, TAWAN, R.O.C.

FOXCONN

PCIE SAS

LU2568*-A001-9H

REV.	ECN.	No.	APPD.
7			
8			



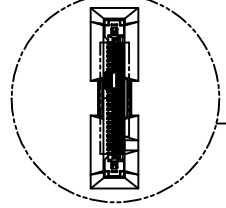
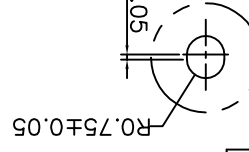
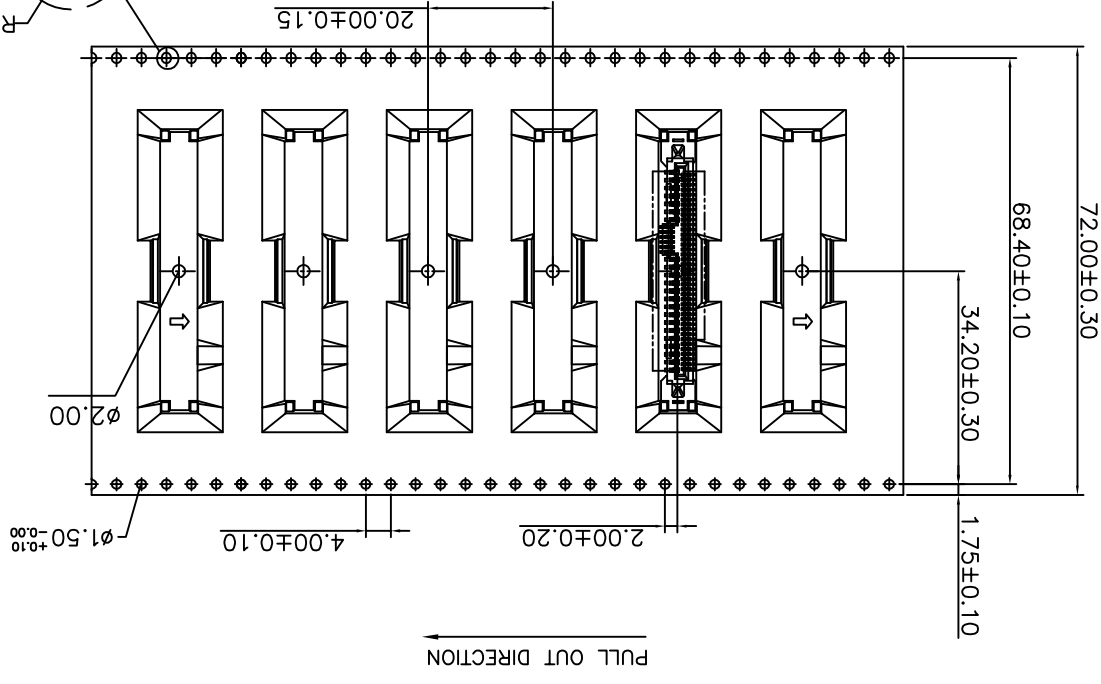
X ±	X ±	UNITS	mm	NAME (INTENDED USE)	PCI-e SAS	HON HAI PRECISION IND. CO., LTD. TAIPEI, TAIWAN, R.O.C.
X ±	X ±	MAT'L		PART NO. (INTENDED USE)	LU2568*-A001-*H	TITLE: CUSTOMER DRAWING V/T, SMT, RECEPTACLE
.XXX ±	.XXX ±	FINISH		APPD:	Shin-Wei Hsiao	DWG NO.: 303-0000-2784
.XX ±	.XX ±	QTY		CHKD:	Yusun Hsiao	SCALE SHEET REV.
.X ±	.X ±			DR:	Zou Jianlong 5/10/12	1:1 3/4 B

THESE DRAWINGS AND SPECIFICATIONS ARE THE PROPERTY OF HON HAI PRECISION IND. CO., LTD. AND SHALL NOT BE REPRODUCED, COPIED OR USED IN ANY MANNER WITHOUT THE PRIOR WRITTEN CONSENT OF HON HAI PRECISION IND. CO., LTD.

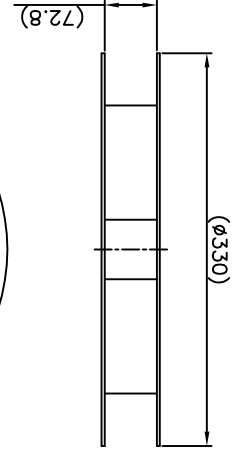
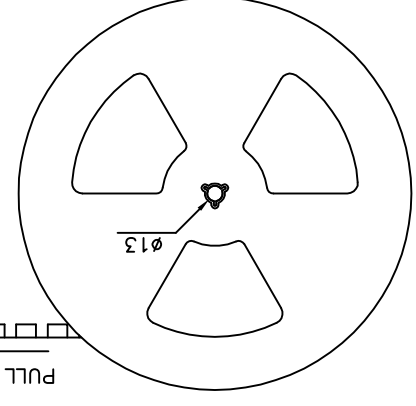
A B C D E

1 2 3 4 5 6 7 8

REV.	ECON.	No.	APPD.
7			
8			



PULL OUT DIRECTION



NAME(INTENDED USE)	PCI-e SAS	UNITS	mm	X.±	X.±	X.±	X.±
	NAME(INTENDED USE)			PCI-e SAS	X.±	X.±	X.±
PART NO.(INTENDED USE)	LU2568*-A001-*H	FINISH		X.±	X.±	X.±	X.±
APPD:	Shin-Wei Hsiao	Q'TY		X.±	X.±	X.±	X.±
CHKD:	Yuson Hsiao			X.±	X.±	X.±	X.±
DR:	Zou Jianlong			X.±	X.±	X.±	X.±
DWG NO.:	303-0000-2784			X.±	X.±	X.±	X.±
TITLE:	CUSTOMER DRAWING			X.±	X.±	X.±	X.±
	V/T, SMT, RECEPTACLE			X.±	X.±	X.±	X.±
	HON HAI PRECISION IND. CO.,LTD.			X.±	X.±	X.±	X.±
	TAIPEI, TAIWAN, R.O.C.			X.±	X.±	X.±	X.±
	FOXCONN			X.±	X.±	X.±	X.±
	SCALE			X.±	X.±	X.±	X.±
	SHEET			X.±	X.±	X.±	X.±
	REV.			X.±	X.±	X.±	X.±
	4/4			X.±	X.±	X.±	X.±
	B			X.±	X.±	X.±	X.±

THESE DRAWINGS AND SPECIFICATIONS ARE THE PROPERTY OF HON HAI PRECISION IND. CO., LTD. AND SHALL NOT BE REPRODUCED, COPIED OR USED IN ANY MANNER WITHOUT THE PRIOR WRITTEN CONSENT OF HON HAI PRECISION IND. CO., LTD.



5/1012

1-5. PCI-e SAS PIN

COPPER ALLOY, 0.25mm THICK. NICKEL PLATING OVER ALL, THICKNESS 50u"MIN.
 MATTE-TIN PLATING OVER NICKEL, ON SOLDER AREA, THICKNESS 100u" MIN.
 GOLD PLATING OVER NICKEL ON CONTACT AREA,

1-6. BOARD LOCK:

COPPER ALLOY, NICKEL PLATING OVER ALL, THICKNESS 50u" MIN.,
 MATTE-TIN PLATING OVER ALL, THICKNESS 100u"MIN..

1-7. HARMFUL MATERIAL CONTROL PLAESE FOLLOW DOC. NO."EPI12"

1-8. THE CONCENTRATIONS OF Br&Cl CAN SATISFYTHE REQUIREMENTS OF
 HALOGEN-FREE IN DOC. EPI12.

2. ELECTRICAL :

- 2-1. LOW LEVEL CONTACT RESISTANCE : 30 MILLIOHMS MAX. INITIAL.
- 2-2. DIELECTRIC WITHSTANDING VOLTAGE : EIA-364-20, NO BREAKDOWN.
- 2-3. INSULATION RESISTANCE : EIA-364-21, 1000 MEGAOHMS MIN.
- 2-4. TEMPERATURE RISE(VIA CURRENT CYCLING) POWER SECTION ONLY
 (P1 THROUGH P15) : THE TEMPERATURE RISE SHALL NOT EXCEED 30°C.

3. MECHANICAL:

- 3-1. MATING FORCE: EIA-364-13, 25N MAX.
- 3-2. UNMATING FORCE: EIA-364-13, 4.5N MIN. INITIAL AND AFTER DURABILITY
- 3-3. DURABILITY: 500 CYCLES
- 3-4. PHYSICAL SHOCK: PASS EIA-364-27, CONDITION H.
- 3-5. VIBRATION: PASS EIA-364-28, CONDITION VII TEST LETTER A.

4. ENVIRONMENTAL:

- 4-1. HUMIDITY: PASS EIA-364-31, METHOD II TEST CONDITION A.
- 4-2. OPERATING TEMPERATURE: -55° TO +85°.
- 4-3. TEMPERATURE LIFT:PASS EIA-364-17,TEST CONDITION III, METHOD A
- 4-4. MIXED FLOWING GAS:PASS EIA-364-65, CLASS 2A.

FOXCONN HON HAI PRECISION IND. CO.,LTD.
 TAIPEI, TAIWAN, R.O.C.

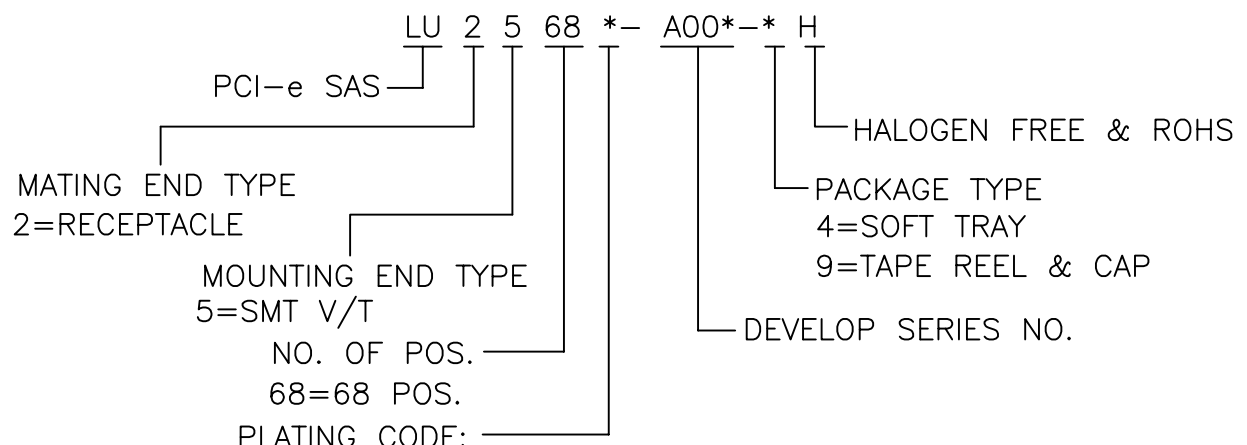
APPD. : Shih-Wei Hsiao	TITLE : SPECIFICATION SHEET PCI-e SAS 68 PIN REC. V/T SMT
CHKD. : Yusan Hsiao	PROD. SERIES: LU2568*-A00*-*H
DR. : Zou Jianlong	DWG. NO : 303-0300-2784
5/11'12	REV. : B SHEET : 1/1

B	BC-12-0035506	Shih-Wei Hsiao
A	BC-11-0043693	Yihsin Chen
REV.	ECN NO.	APPD.

100 u" MIN ON SOLDER AREA
C) GOLD PLATING OVER NICKEL.
ON CONTACT AREA

5	BOARD LOCK	2	COPPER ALLOY	A) NICKEL PLATING OVER ALL THICKNESS : 50u"MIN. B) MATTE-TIN PLATING OVER NICKEL. THICKNESS : 100u"MIN ON SOLDER AREA
---	------------	---	--------------	---

- NOTE : 1. HARMFUL MATERIAL CONTROL PLEASE FOLLOW DOC. NO. "EPI12"
2. THE CONCENTRATIONS OF Br&Cl CAN SATISFYTHE REQUIREMENTS OF HALOGEN-FREE IN DOC. EPI12.
3. PRODUCT NO. MATRIX:



4. PLEASE CONTACT FOXCONN SALES REPRESENTATIVE TO VERIFY PRODUCT DETAILS&AVAILABILITY.

FOXCONN HON HAI PRECISION IND. CO.,LTD.
TAIPEI, TAIWAN, R.O.C.

APPD. : Shih-Wei Hsiao	TITLE : MATERIAL SHEET PCI-e SAS 68 PIN REC. V/T SMT
CHKD. : Yusan Hsiao	PROD. SERIES : LU2568*-A00*-*H
DR. : Zou Jianlong 5/11'12	DWG. NO : 303-0500-2784
	REV. : B SHEET : 1/1

B	BC-12-0035653	Shih-Wei Hsiao
A	BC-11-0043656	Yihsin Chen
REV.	ECN NO	APPD.

X-ON Electronics

Largest Supplier of Electrical and Electronic Components

Click to view similar products for [Standard Card Edge Connectors](#) category:

Click to view products by [Foxconn](#) manufacturer:

Other Similar products are found below :

[6565204-6](#) [PKC-156](#) [1437274-4](#) [147889-1](#) [1489165-4](#) [EBT156-12B1X](#) [EBT15622B2X](#) [EBT156-22R2W](#) [1-582587-1](#) [1-582589-1](#) [2-6437275-9](#) [284-0102-12100](#) [306022901000000](#) [307-012-502-202](#) [307-024-526-201](#) [307-056-520-300](#) [307-080-526-208](#) [1926088-2](#) [245-062-520-350](#) [287-0032-12101](#) [306-010-500-112](#) [306-028-525-102](#) [306-240-318](#) [307-036-502-202](#) [307-036-521-301](#) [307-072-526-202](#) [345-060-559-303](#) [368-004-520-201](#) [392-008-559-201](#) [534671-1](#) [5-530501-5](#) [341-240-317](#) [345-029-520-300](#) [345-030-500-301](#) [345-044-500-300](#) [345-220-058](#) [346-240-318](#) [387-012-523-300](#) [395-044-520-300](#) [395-100-524-300](#) [50-12B-10](#) [50-6SN-5](#) [09-07-2032](#) [10035388-106LF](#) [10035388-802LF](#) [10115859-011LF](#) [10122859-009LF](#) [101269333204245CLF](#) [10127905-B04B24BLF](#) [530555-1](#)