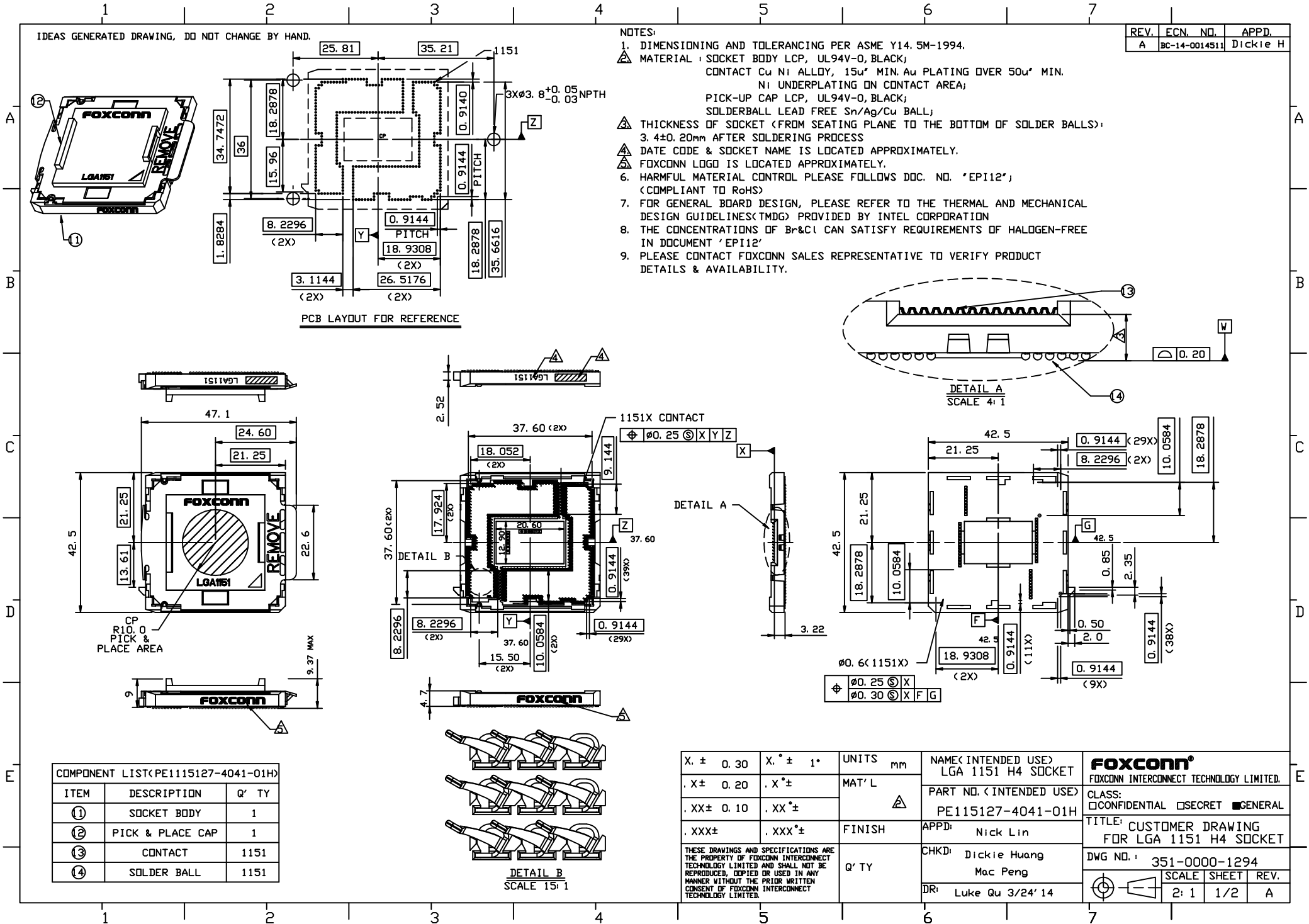


IDEAS GENERATED DRAWING, DO NOT CHANGE BY HAND.

NOTES:

1. DIMENSIONING AND TOLERANCING PER ASME Y14.5M-1994.
2. MATERIAL: SOCKET BODY LCP, UL94V-0, BLACK;
CONTACT Cu Ni ALLOY, 15u" MIN. Au PLATING OVER 50u" MIN.
NI UNDERPLATING ON CONTACT AREA;
PICK-UP CAP LCP, UL94V-0, BLACK;
SOLDERBALL LEAD FREE Sn/Ag/Cu BALL;
3. THICKNESS OF SOCKET (FROM SEATING PLANE TO THE BOTTOM OF SOLDER BALLS):
3.4±0.20mm AFTER SOLDERING PROCESS
4. DATE CODE & SOCKET NAME IS LOCATED APPROXIMATELY.
5. FOXCONN LOGO IS LOCATED APPROXIMATELY.
6. HARMFUL MATERIAL CONTROL PLEASE FOLLOWS DOC. NO. 'EPI12';
(COMPLIANT TO RoHS)
7. FOR GENERAL BOARD DESIGN, PLEASE REFER TO THE THERMAL AND MECHANICAL DESIGN GUIDELINES (TMDG) PROVIDED BY INTEL CORPORATION
8. THE CONCENTRATIONS OF Br&Cl CAN SATISFY REQUIREMENTS OF HALOGEN-FREE IN DOCUMENT 'EPI12'
9. PLEASE CONTACT FOXCONN SALES REPRESENTATIVE TO VERIFY PRODUCT DETAILS & AVAILABILITY.

| REV. | ECN. NO. | APPD. |
|------|---------------|----------|
| A | BC-14-0014511 | Dickie H |



PCB LAYOUT FOR REFERENCE

DETAIL A
SCALE 4:1

DETAIL B

DETAIL B
SCALE 15:1

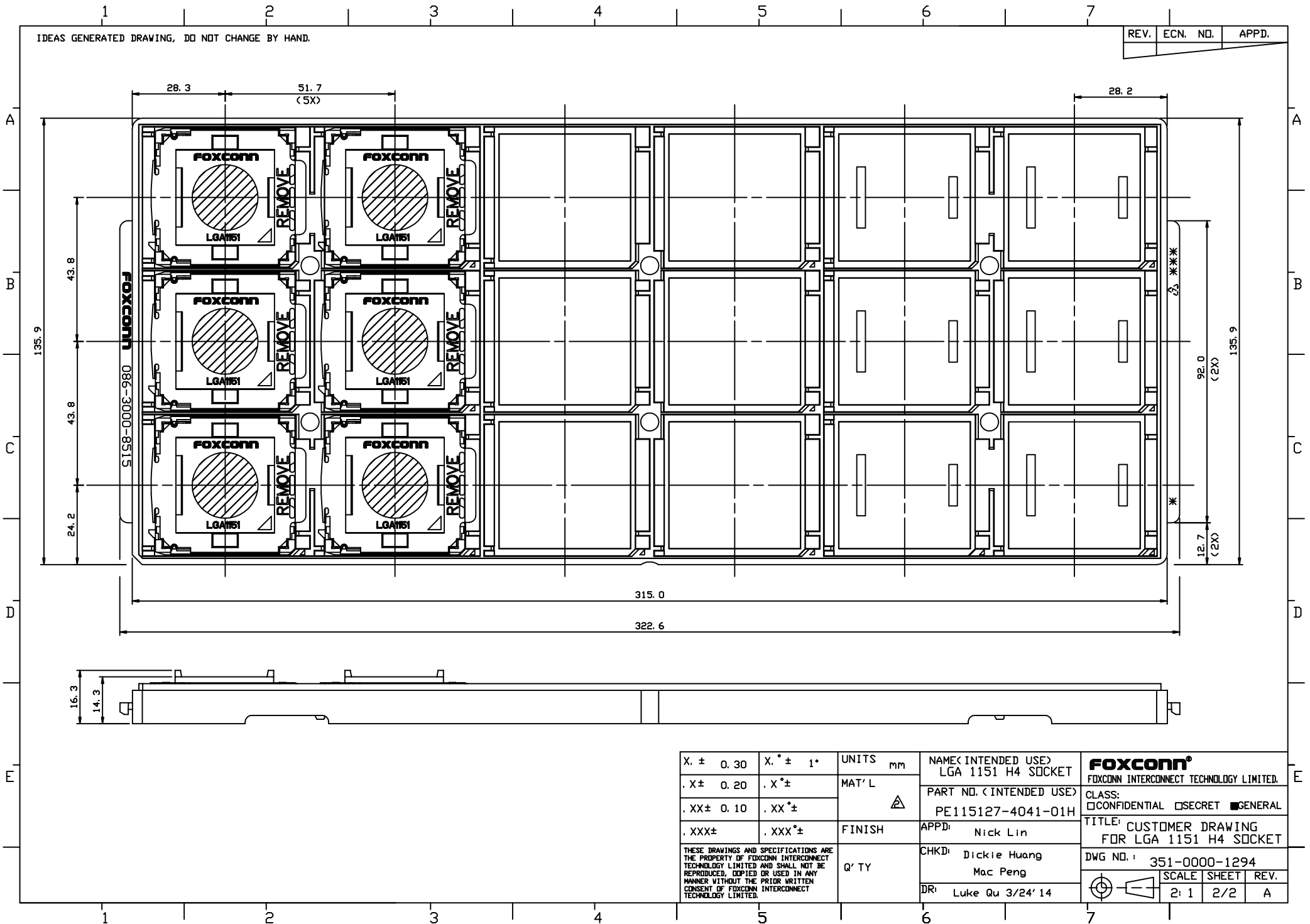
| COMPONENT LIST(PE115127-4041-01H) | | |
|-----------------------------------|------------------|-------|
| ITEM | DESCRIPTION | Q' TY |
| ① | SOCKET BODY | 1 |
| ② | PICK & PLACE CAP | 1 |
| ③ | CONTACT | 1151 |
| ④ | SOLDER BALL | 1151 |

| | | | | | | |
|-------------|-----------|--------|----|-------------------------|--------------------------|--|
| X. ± 0.30 | X. ° ± 1° | UNITS | mm | NAME (INTENDED USE) | LGA 1151 H4 SOCKET | FOXCONN FOXCONN INTERCONNECT TECHNOLOGY LIMITED. |
| . X ± 0.20 | . X ° ± | MAT'L | △ | PART NO. (INTENDED USE) | PE115127-4041-01H | |
| . XX ± 0.10 | . XX ° ± | FINISH | | APPD: | Nick Lin | TITLE: CUSTOMER DRAWING FOR LGA 1151 H4 SOCKET |
| . XXX ± | . XXX ° ± | Q' TY | | CHKD: | Dickie Huang Mac Peng | DWG NO.: 351-0000-1294 |
| | | | | DR: | Luke Qu 3/24' 14 | SCALE SHEET REV. 2: 1 1/2 A |

THESE DRAWINGS AND SPECIFICATIONS ARE THE PROPERTY OF FOXCONN INTERCONNECT TECHNOLOGY LIMITED AND SHALL NOT BE REPRODUCED, COPIED OR USED IN ANY MANNER WITHOUT THE PRIOR WRITTEN CONSENT OF FOXCONN INTERCONNECT TECHNOLOGY LIMITED.

IDEAS GENERATED DRAWING, DO NOT CHANGE BY HAND.

| | | |
|------|----------|-------|
| REV. | ECN. NO. | APPD. |
|------|----------|-------|



| | | | | | | |
|--|-----------|--------|----|-------------------------|--------------------------|--|
| X. ± 0.30 | X. ° ± 1° | UNITS | mm | NAME (INTENDED USE) | LGA 1151 H4 SOCKET | FOXCONN FOXCONN INTERCONNECT TECHNOLOGY LIMITED. |
| . X ± 0.20 | . X ° ± | MAT'L | | PART NO. (INTENDED USE) | PE115127-4041-01H | |
| . XX ± 0.10 | . XX ° ± | | | APPD: | Nick Lin | TITLE: CUSTOMER DRAWING FOR LGA 1151 H4 SOCKET |
| . XXX ± | . XXX ° ± | FINISH | | CHKD: | Dickie Huang Mac Peng | DWG NO.: 351-0000-1294 |
| <small>THESE DRAWINGS AND SPECIFICATIONS ARE THE PROPERTY OF FOXCONN INTERCONNECT TECHNOLOGY LIMITED AND SHALL NOT BE REPRODUCED, COPIED OR USED IN ANY MANNER WITHOUT THE PRIOR WRITTEN CONSENT OF FOXCONN INTERCONNECT TECHNOLOGY LIMITED.</small> | | | | Q' TY | DR: | LUKE QU 3/24' 14 |
| | | | | | | SCALE |

X-ON Electronics

Largest Supplier of Electrical and Electronic Components

Click to view similar products for [Foxconn](#) manufacturer:

Other Similar products are found below :

[AS0A821-H2RB-7H](#) [PE41897-01NK5-1H](#) [JFM3811J-G140-4F](#) [QT012206-1031-2H](#) [UC11123-11KB-4F](#) [UEA11123-8EZ3-4H](#) [2EG04927-D2LN-DF](#) [SJ05201-A0](#) [UEA11123-QHD6-4H](#) [UB1112C-8FDE-4F](#) [3H993321-4M41-01H](#) [ATF5883-A2B30-2F](#) [ATF5883-A2B20-2F](#) [WNMBL60-1NNK0-EH](#) [WNMBP06-01NK0-EH](#) [HM3505E-P1](#) [AH58897-T2B20-3F](#) [DZ11AA1-H5A7-4F](#) [ASAA821-H4SB5-7H](#) [PE36473-01NK3-1H](#) [PE36473-01NK4-1H](#) [QH11121-DBT1-4F](#) [BBH1231-C1000-7H](#) [ATH4017-H3B-4F](#) [3S1020F3-AD4-4F](#) [2EF5B57-DA9DN-5F](#) [UEA01123-4FH1-4H](#) [2EM5407-B19BL-8F](#) [LU11683-B007-9H](#) [HB3106F](#) [LDH2363-33N20-7H](#) [ATH4017-H9LE-4F](#) [UEA1112C-UHS6-4F](#) [2EF5497-DA9DB-8H](#) [LDP2683-13A50-9H](#) [JPD1030-M301-7F](#) [2E0BC21-S64BM-7H](#) [2EZ00161-PH2-4F](#) [HC11051-D4](#) [LD1807F-S54TD](#) [2EG24927-D5D1-JF](#) [ASOB226-S52Q-7H](#) [AS0A626-HASN-7H](#) [HF5504E-P1LH](#) [JA634C-40ADA5B-7H](#) [AS0A621-H2R6-7H](#) [QT002206-4131-3H](#) [JFM24U11-21C3-4F](#) [EH06003-DAW-DF](#) [AS0B221-S52Q-7H](#)