



RF Power Field Effect Transistors

N-Channel Enhancement-Mode Lateral MOSFETs

RF Power transistors designed for applications operating at frequencies between 960 and 1215 MHz. These devices are suitable for use in pulsed applications.

- Typical Pulsed Performance: $V_{DD} = 50$ Volts, $I_{DQ} = 100$ mA, $P_{out} = 275$ Watts Peak (27.5 Watts Avg.), $f = 1030$ MHz, Pulse Width = 128 μ sec, Duty Cycle = 10%
 Power Gain — 20.3 dB
 Drain Efficiency — 65.5%
- Capable of Handling 10:1 VSWR, @ 50 Vdc, 1030 MHz, 275 Watts Peak Power
- Typical Broadband Performance: $V_{DD} = 50$ Volts, $I_{DQ} = 100$ mA, $P_{out} = 250$ Watts Peak (25 Watts Avg.), $f = 960$ -1215 MHz, Pulse Width = 128 μ sec, Duty Cycle = 10%
 Power Gain — 19.8 dB
 Drain Efficiency — 58%

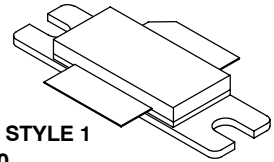
Features

- Characterized with Series Equivalent Large-Signal Impedance Parameters
- Internally Matched for Ease of Use
- Qualified Up to a Maximum of 50 V_{DD} Operation
- Integrated ESD Protection
- Greater Negative Gate-Source Voltage Range for Improved Class C Operation
- RoHS Compliant
- In Tape and Reel. R3 Suffix = 250 Units per 56 mm, 13 inch Reel.

MRF6V12250HR3
MRF6V12250HSR3

960-1215 MHz, 275 W, 50 V
PULSED
LATERAL N-CHANNEL
RF POWER MOSFETs

CASE 465-06, STYLE 1
NI-780
MRF6V12250HR3



CASE 465A-06, STYLE 1
NI-780S
MRF6V12250HSR3

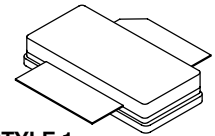


Table 1. Maximum Ratings

| Rating | Symbol | Value | Unit |
|--------------------------------------|-----------|--------------|--------------|
| Drain-Source Voltage | V_{DSS} | -0.5, +100 | Vdc |
| Gate-Source Voltage | V_{GS} | -6.0, +10 | Vdc |
| Storage Temperature Range | T_{stg} | - 65 to +150 | $^{\circ}$ C |
| Case Operating Temperature | T_C | 150 | $^{\circ}$ C |
| Operating Junction Temperature (1,2) | T_J | 225 | $^{\circ}$ C |

Table 2. Thermal Characteristics

| Characteristic | Symbol | Value (2,3) | Unit |
|-----------------------------------------------------------------------------------------------------------------------------------|-----------------|-------------|----------------|
| Thermal Resistance, Junction to Case Case Temperature 80 $^{\circ}$ C, 275 W Pulsed, 128 μ sec Pulse Width, 10% Duty Cycle | $Z_{\theta JC}$ | 0.08 | $^{\circ}$ C/W |

1. Continuous use at maximum temperature will affect MTF.
2. MTF calculator available at <http://www.freescale.com/rf>. Select Software & Tools/Development Tools/Calculators to access MTF calculators by product.
3. Refer to AN1955, *Thermal Measurement Methodology of RF Power Amplifiers*. Go to <http://www.freescale.com/rf>. Select Documentation/Application Notes - AN1955.

Table 3. ESD Protection Characteristics

| Test Methodology | Class |
|---------------------------------------|--------------|
| Human Body Model (per JESD22-A114) | 2 (Minimum) |
| Machine Model (per EIA/JESD22-A115) | B (Minimum) |
| Charge Device Model (per JESD22-C101) | IV (Minimum) |

Table 4. Electrical Characteristics ($T_A = 25^\circ\text{C}$ unless otherwise noted)

| Characteristic | Symbol | Min | Typ | Max | Unit |
|----------------|--------|-----|-----|-----|------|
|----------------|--------|-----|-----|-----|------|

Off Characteristics

| | | | | | |
|---------------------------------------------------------------------------------------------------|---------------|-----|---|-----|---------------|
| Gate-Source Leakage Current ($V_{GS} = 5\text{ Vdc}$, $V_{DS} = 0\text{ Vdc}$) | I_{GSS} | — | — | 10 | μA |
| Drain-Source Breakdown Voltage ($V_{GS} = 0\text{ Vdc}$, $I_D = 100\text{ mA}$) | $V_{(BR)DSS}$ | 110 | — | — | Vdc |
| Zero Gate Voltage Drain Leakage Current ($V_{DS} = 50\text{ Vdc}$, $V_{GS} = 0\text{ Vdc}$) | I_{DSS} | — | — | 10 | μA |
| Zero Gate Voltage Drain Leakage Current ($V_{DS} = 90\text{ Vdc}$, $V_{GS} = 0\text{ Vdc}$) | I_{DSS} | — | — | 100 | μA |

On Characteristics

| | | | | | |
|-------------------------------------------------------------------------------------------------------------|--------------|-----|------|-----|-----|
| Gate Threshold Voltage ($V_{DS} = 10\text{ Vdc}$, $I_D = 662\ \mu\text{A}$) | $V_{GS(th)}$ | 0.9 | 1.7 | 2.4 | Vdc |
| Gate Quiescent Voltage ($V_{DD} = 50\text{ Vdc}$, $I_D = 100\text{ mA}$, Measured in Functional Test) | $V_{GS(Q)}$ | 1.7 | 2.4 | 3.2 | Vdc |
| Drain-Source On-Voltage ($V_{GS} = 10\text{ Vdc}$, $I_D = 1.6\text{ A}$) | $V_{DS(on)}$ | — | 0.25 | — | Vdc |

Dynamic Characteristics ⁽¹⁾

| | | | | | |
|------------------------------------------------------------------------------------------------------------------------|-----------|---|------|---|----|
| Reverse Transfer Capacitance ($V_{DS} = 50\text{ Vdc} \pm 30\text{ mV(rms)}$ ac @ 1 MHz, $V_{GS} = 0\text{ Vdc}$) | C_{rss} | — | 0.46 | — | pF |
| Output Capacitance ($V_{DS} = 50\text{ Vdc} \pm 30\text{ mV(rms)}$ ac @ 1 MHz, $V_{GS} = 0\text{ Vdc}$) | C_{oss} | — | 352 | — | pF |
| Input Capacitance ($V_{DS} = 50\text{ Vdc}$, $V_{GS} = 0\text{ Vdc} \pm 30\text{ mV(rms)}$ ac @ 1 MHz) | C_{iss} | — | 695 | — | pF |

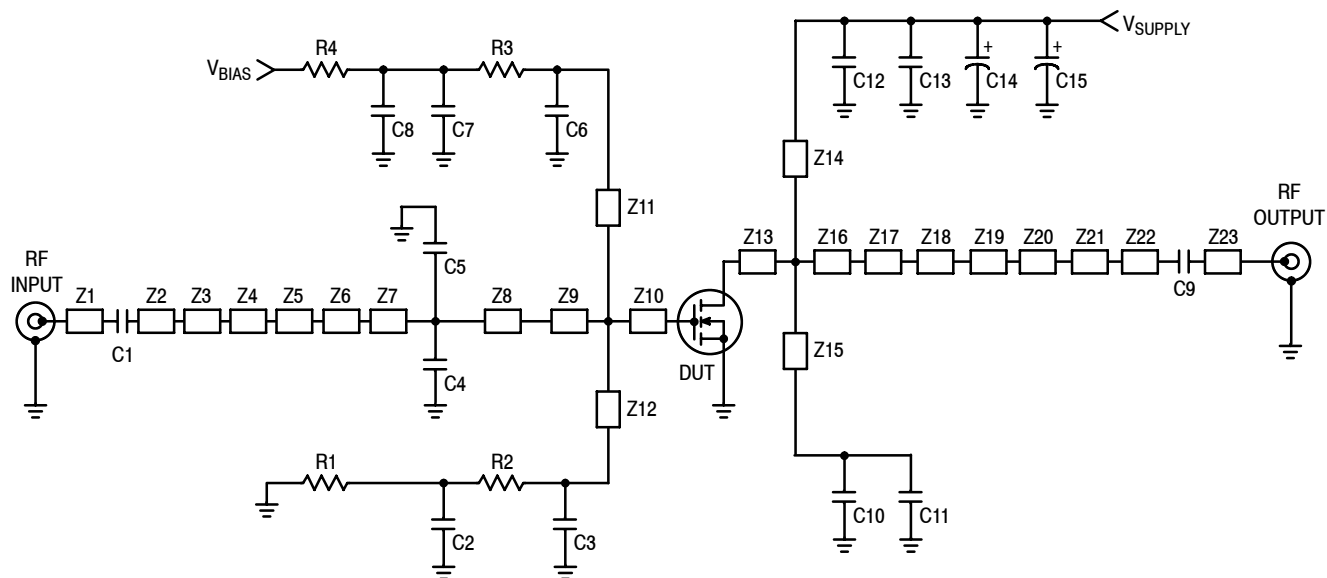
Functional Tests (In Freescale Test Fixture, 50 ohm system) $V_{DD} = 50\text{ Vdc}$, $I_{DQ} = 100\text{ mA}$, $P_{out} = 275\text{ W Peak}$ (27.5 W Avg.), $f = 1030\text{ MHz}$, Pulsed, 128 μsec Pulse Width, 10% Duty Cycle

| | | | | | |
|-------------------|----------|----|------|----|----|
| Power Gain | G_{ps} | 19 | 20.3 | 22 | dB |
| Drain Efficiency | η_D | 63 | 65.5 | — | % |
| Input Return Loss | IRL | — | -14 | -9 | dB |

Typical Broadband Performance — 960-1215 MHz (In Freescale 960-1215 MHz Test Fixture, 50 ohm system) $V_{DD} = 50\text{ Vdc}$, $I_{DQ} = 100\text{ mA}$, $P_{out} = 250\text{ W Peak}$ (25 W Avg.), $f = 960\text{--}1215\text{ MHz}$, Pulsed, 128 μsec Pulse Width, 10% Duty Cycle

| | | | | | |
|------------------|----------|---|------|---|----|
| Power Gain | G_{ps} | — | 19.8 | — | dB |
| Drain Efficiency | η_D | — | 58 | — | % |

1. Part internally matched both on input and output.



| | | | |
|----------|----------------------------|----------|------------------------------------------------------------|
| Z1 | 1.055" x 0.082" Microstrip | Z13 | 0.190" x 1.250" Microstrip |
| Z2 | 0.100" x 0.082" Microstrip | Z14, Z15 | 0.517" x 0.080" Microstrip |
| Z3 | 0.084" x 0.395" Microstrip | Z16 | 0.225" x 1.250" Microstrip |
| Z4 | 0.419" x 0.040" Microstrip | Z17 | 0.860" x 0.975" Microstrip |
| Z5 | 0.498" x 0.466" Microstrip | Z18 | 0.140" x 0.950" Microstrip |
| Z6 | 0.110" x 1.060" Microstrip | Z19 | 0.028" x 0.110" Microstrip |
| Z7 | 0.050" x 1.300" Microstrip | Z20 | 0.397" x 0.040" Microstrip |
| Z8 | 0.092" x 1.300" Microstrip | Z21 | 0.264" x 0.480" Microstrip |
| Z9 | 0.219" x 1.420" Microstrip | Z22 | 0.100" x 0.082" Microstrip |
| Z10 | 0.087" x 1.420" Microstrip | Z23 | 0.521" x 0.082" Microstrip |
| Z11, Z12 | 0.187" x 0.050" Microstrip | PCB | Arlon CuClad 250GX-0300-55-22, 0.030", $\epsilon_r = 2.55$ |

Figure 1. MRF6V12250HR3(HSR3) Test Circuit Schematic

Table 5. MRF6V12250HR3(HSR3) Test Circuit Component Designations and Values

| Part | Description | Part Number | Manufacturer |
|------------------|-------------------------------------------|----------------------|--------------|
| C1, C4, C5 | 1.5 pF Chip Capacitors | ATC100B1R5BT500XT | ATC |
| C2, C7, C11, C13 | 2.2 μ F, 100 V Chip Capacitors | G2225X7R225KT3AB | ATC |
| C3, C6, C10, C12 | 33 pF Chip Capacitors | ATC100B330JT500XT | ATC |
| C8 | 22 μ F, 25 V Chip Capacitor | TPSD226M025R0200 | AVX |
| C9 | 9.1 pF Chip Capacitor | ATC100B9R1CT500XT | ATC |
| C14, C15 | 470 μ F, 63 V Electrolytic Capacitors | MCGPA63V477M13X26-RH | Multicomp |
| R1, R2, R3, R4 | 0 Ω , 3.5 A Chip Resistors | CRCW12060000Z0EA | Vishay |

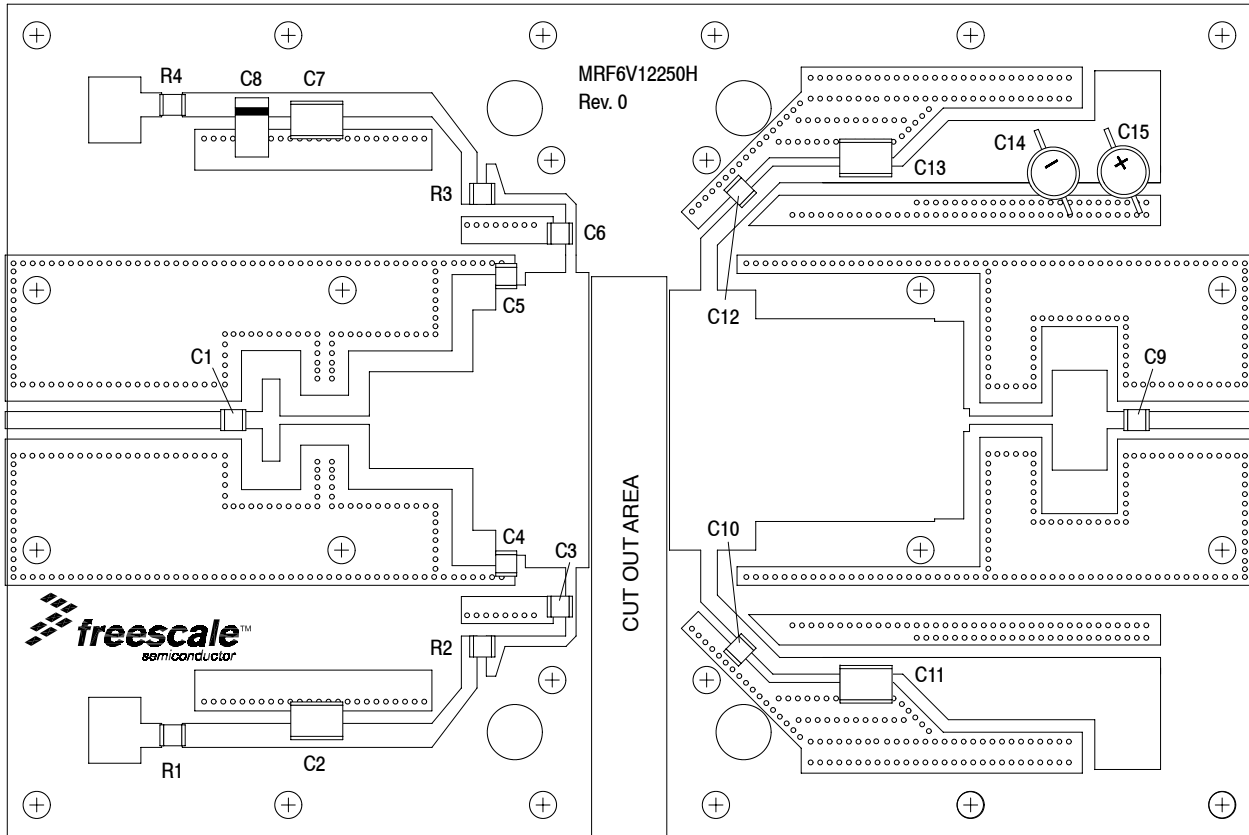


Figure 2. MRF6V12250HR3(HSR3) Test Circuit Component Layout

TYPICAL CHARACTERISTICS

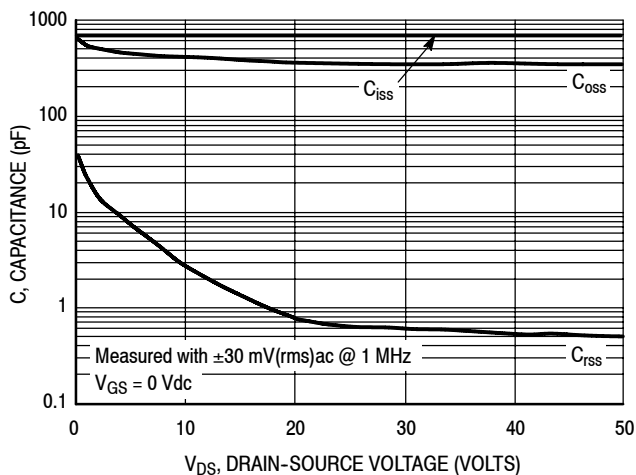


Figure 3. Capacitance versus Drain-Source Voltage

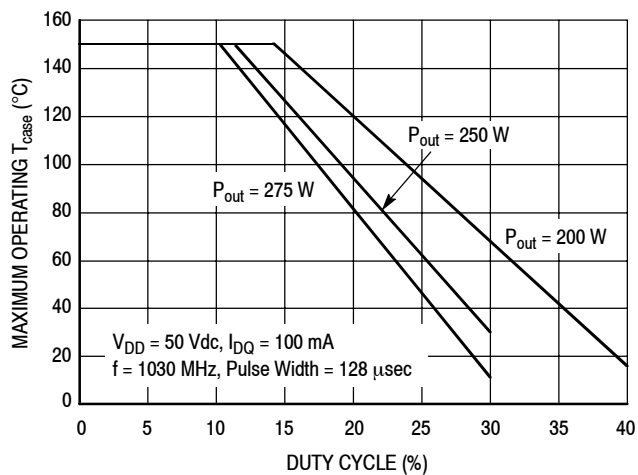


Figure 4. Safe Operating Area

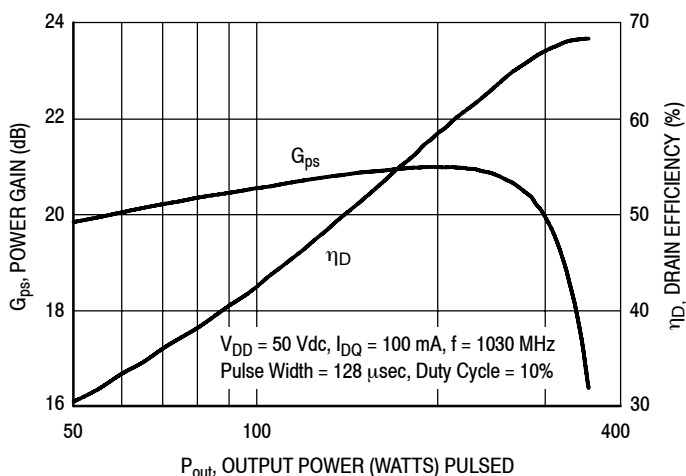


Figure 5. Pulsed Power Gain and Drain Efficiency versus Output Power

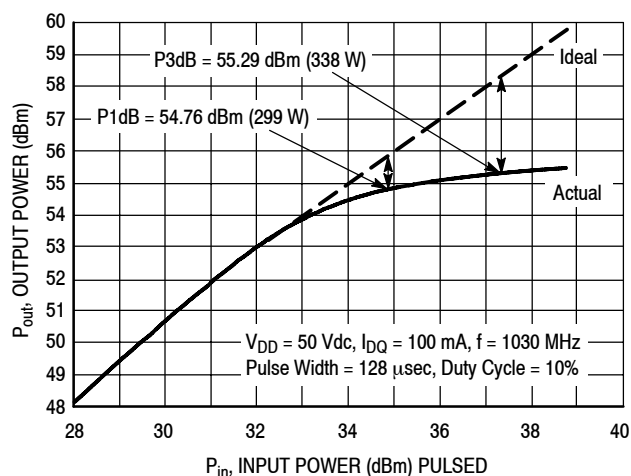


Figure 6. Pulsed Output Power versus Input Power

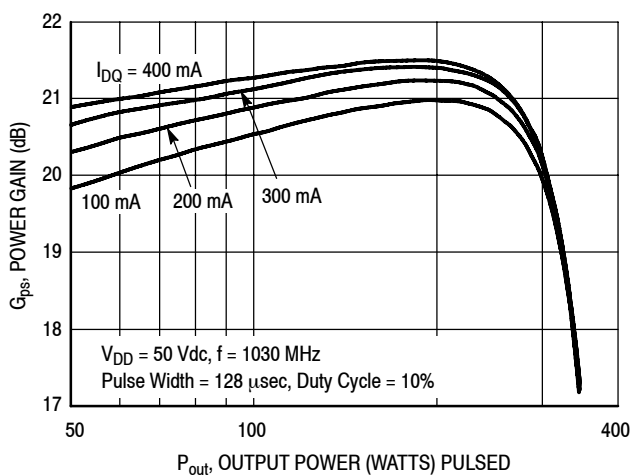


Figure 7. Pulsed Power Gain versus Output Power

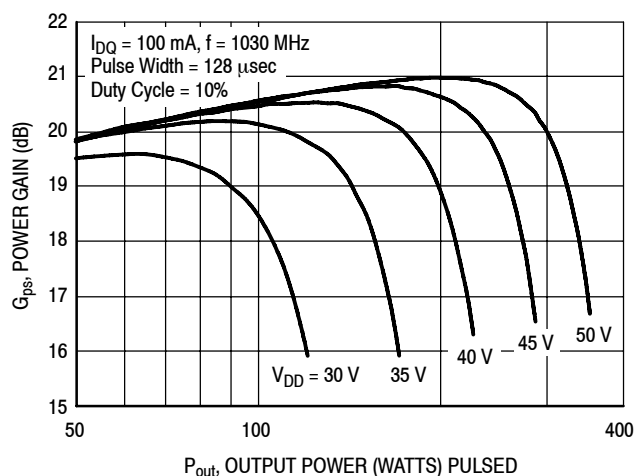


Figure 8. Pulsed Power Gain versus Output Power

TYPICAL CHARACTERISTICS

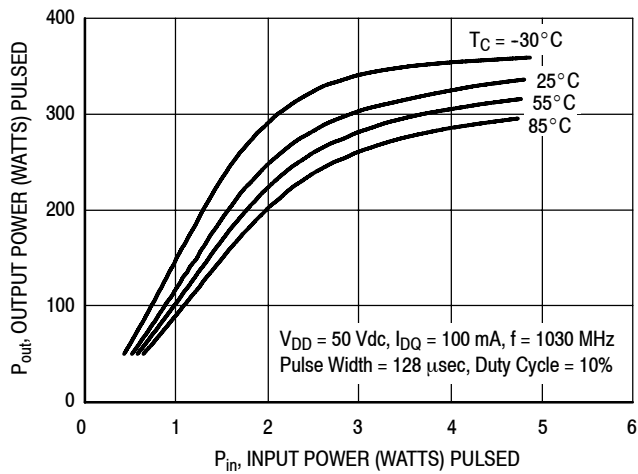


Figure 9. Pulsed Output Power versus Input Power

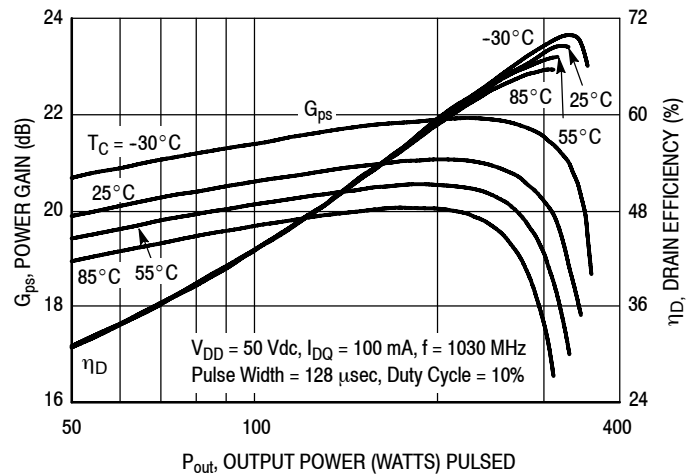
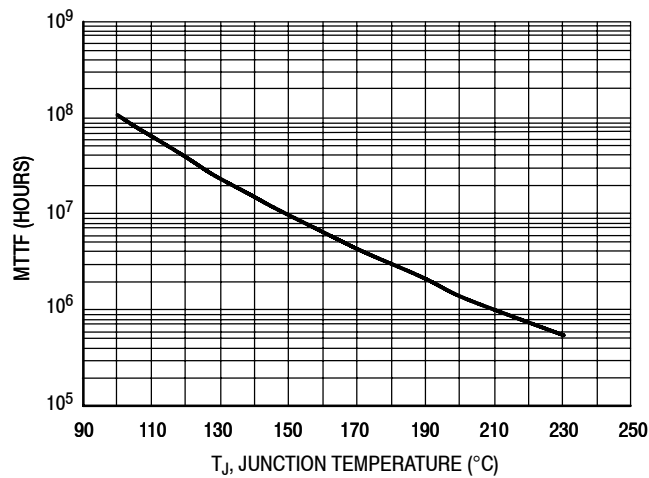


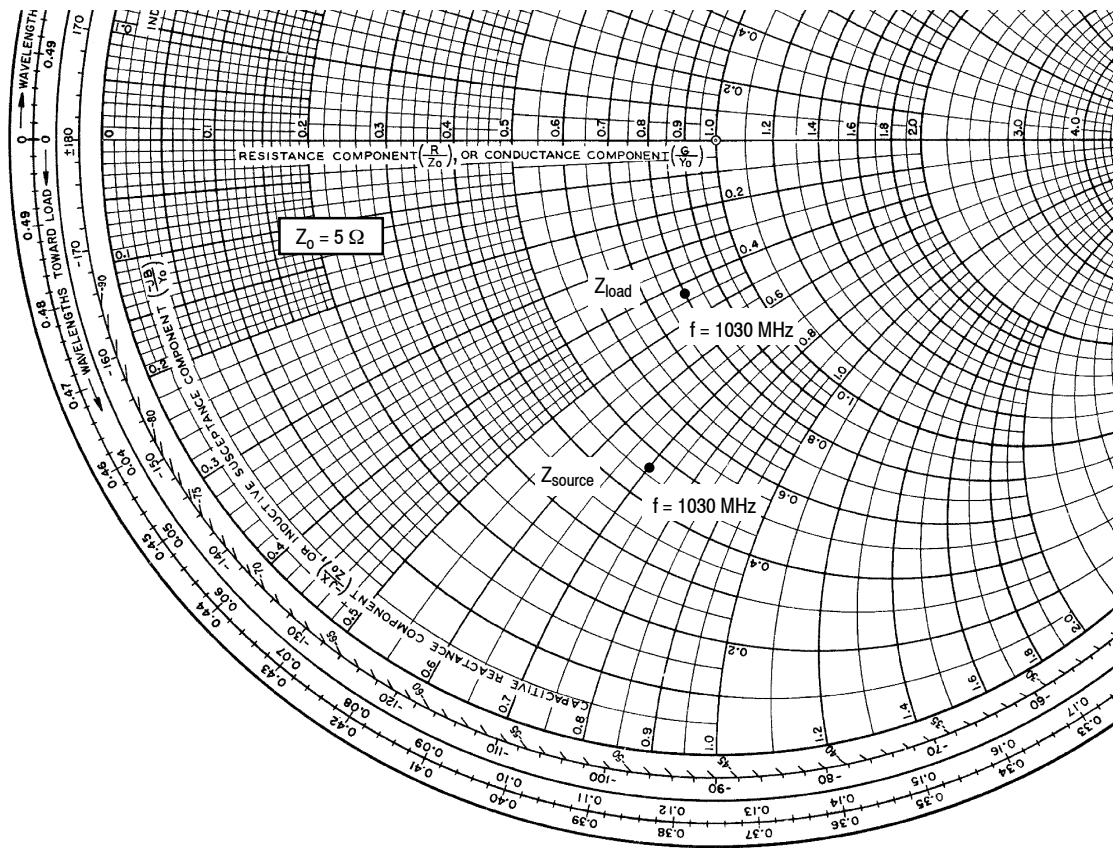
Figure 10. Pulsed Power Gain and Drain Efficiency versus Output Power



This above graph displays calculated MTTF in hours when the device is operated at $V_{DD} = 50$ Vdc, $P_{out} = 275$ W Peak, Pulse Width = 128 μ sec, Duty Cycle = 10%, and $\eta_D = 65.5\%$.

MTTF calculator available at <http://www.freescale.com/rf>. Select Software & Tools/Development Tools/Calculators to access MTTF calculators by product.

Figure 11. MTTF versus Junction Temperature



$V_{DD} = 50 \text{ Vdc}$, $I_{DQ} = 100 \text{ mA}$, $P_{out} = 275 \text{ W Peak}$

| f MHz | Z_{source} Ω | Z_{load} Ω |
|----------|--------------------------|------------------------|
| 1030 | $2.30 - j3.51$ | $4.0 - j2.14$ |

Z_{source} = Test circuit impedance as measured from gate to ground.

Z_{load} = Test circuit impedance as measured from drain to ground.

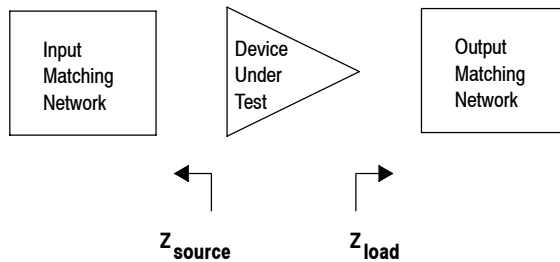


Figure 12. Series Equivalent Source and Load Impedance

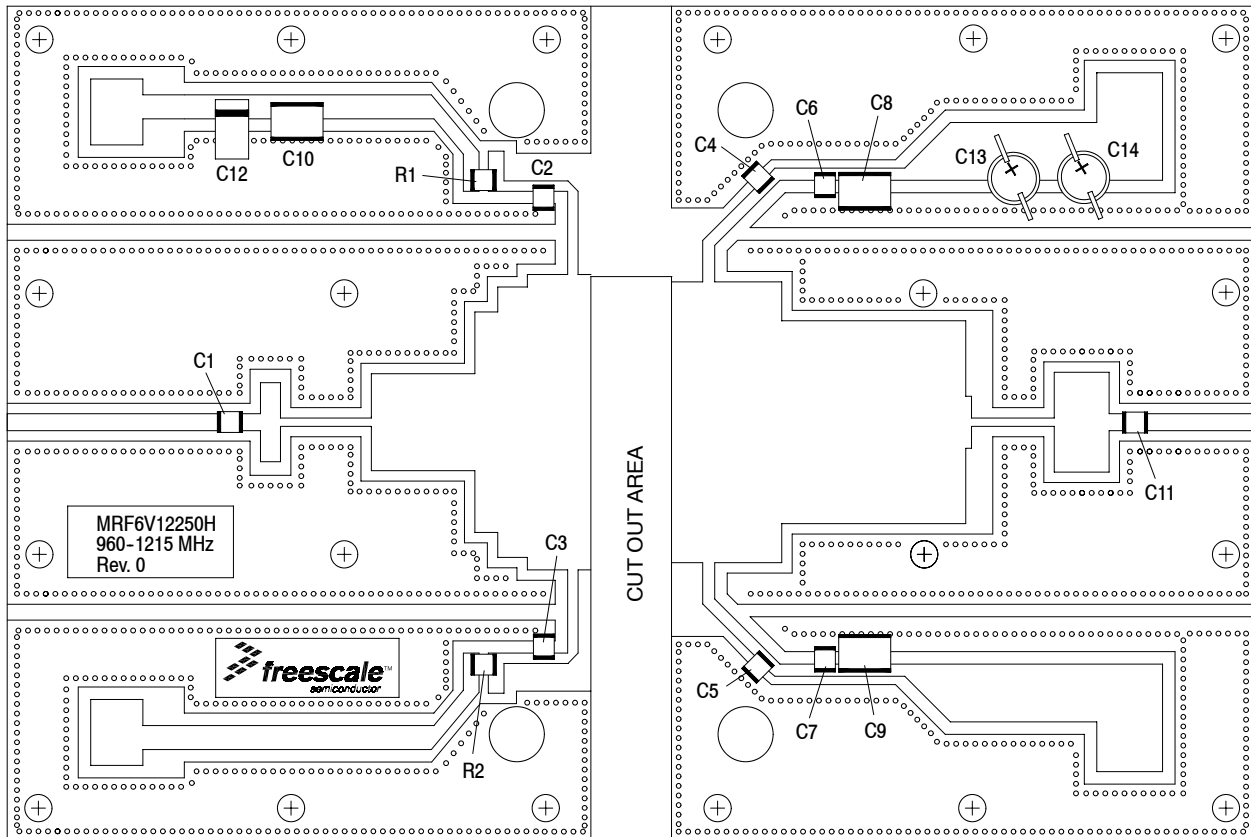


Figure 13. MRF6V12250HR3(HSR3) Test Circuit Component Layout — 960-1215 MHz

Table 6. MRF6V12250HR3(HSR3) Test Circuit Component Designations and Values — 960-1215 MHz

| Part | Description | Part Number | Manufacturer |
|----------------|-------------------------------------------|----------------------|--------------|
| C1 | 2.7 pF Chip Capacitor | ATC100B2R7BT500XT | ATC |
| C2, C3, C4, C5 | 33 pF Chip Capacitors | ATC100B330JT500XT | ATC |
| C6, C7 | 1000 pF Chip Capacitors | ATC100B102JT50XT | ATC |
| C8, C9, C10 | 2.2 μ F, 100 V Chip Capacitors | G2225X7R225KT3AB | ATC |
| C11 | 9.1 pF Chip Capacitor | ATC100B9R1CT500XT | ATC |
| C12 | 22 μ F, 25 V Tantalum Capacitor | TPSD226M025R0200 | AVX |
| C13, C14 | 470 μ F, 63 V Electrolytic Capacitors | MCGPR63V477M13X26-RH | Multicomp |
| R1, R2 | 47 Ω , 1/4 W Chip Resistors | CRCW120647R0FKEA | Vishay |
| PCB | 0.030", $\epsilon_r = 2.55$ | AD255A | Arlon |

TYPICAL CHARACTERISTICS — 960-1215 MHz

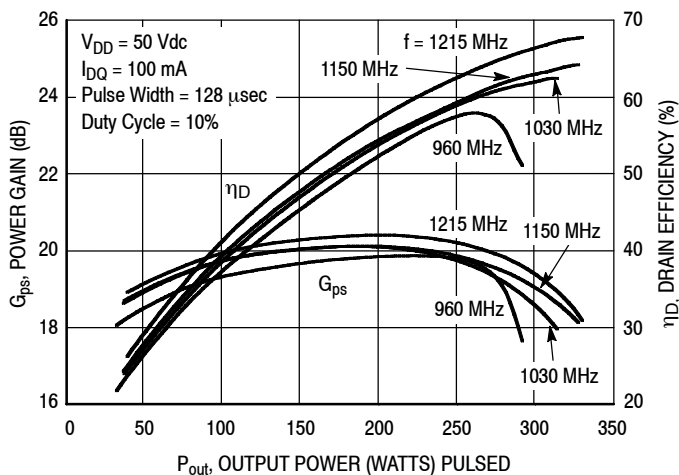


Figure 14. Pulsed Power Gain and Drain Efficiency versus Output Power

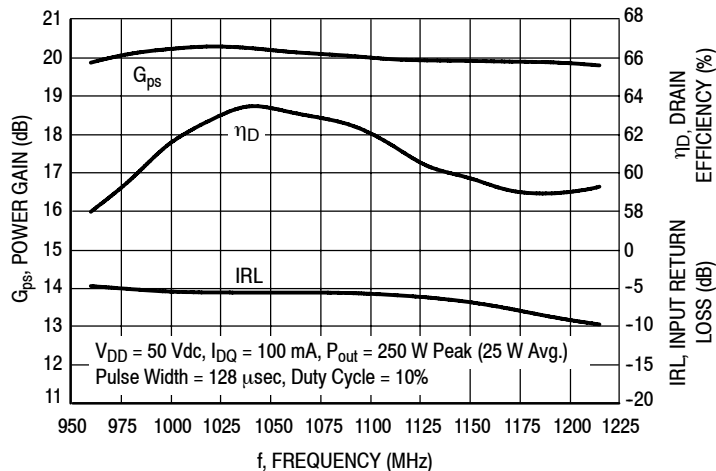
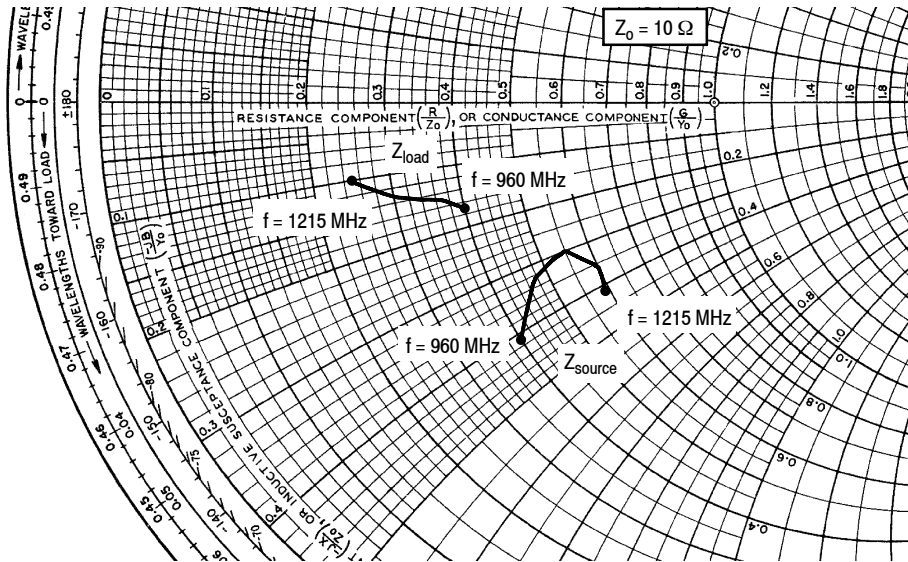


Figure 15. Broadband Performance @ $P_{out} = 250 \text{ Watts Peak}$



$V_{DD} = 50 \text{ Vdc}$, $I_{DQ} = 100 \text{ mA}$, $P_{out} = 250 \text{ W Peak}$

| f MHz | $Z_{source} \Omega$ | $Z_{load} \Omega$ |
|-------|---------------------|-------------------|
| 960 | 4.00 - j4.14 | 3.96 - j1.70 |
| 970 | 4.05 - j3.99 | 3.90 - j1.67 |
| 980 | 4.16 - j3.86 | 3.83 - j1.66 |
| 990 | 4.33 - j3.71 | 3.75 - j1.66 |
| 1000 | 4.49 - j3.57 | 3.70 - j1.65 |
| 1010 | 4.61 - j3.43 | 3.68 - j1.62 |
| 1020 | 4.66 - j3.33 | 3.69 - j1.59 |
| 1030 | 4.68 - j3.26 | 3.69 - j1.54 |
| 1040 | 4.72 - j3.20 | 3.67 - j1.52 |
| 1050 | 4.83 - j3.13 | 3.59 - j1.53 |
| 1060 | 5.02 - j3.06 | 3.48 - j1.53 |
| 1070 | 5.24 - j2.99 | 3.38 - j1.53 |
| 1080 | 5.42 - j2.96 | 3.32 - j1.51 |
| 1090 | 5.51 - j2.99 | 3.30 - j1.47 |

$V_{DD} = 50 \text{ Vdc}$, $I_{DQ} = 100 \text{ mA}$, $P_{out} = 250 \text{ W Peak}$

| f MHz | $Z_{source} \Omega$ | $Z_{load} \Omega$ |
|-------|---------------------|-------------------|
| 1100 | 5.49 - j3.04 | 3.32 - j1.43 |
| 1110 | 5.47 - j3.07 | 3.31 - j1.42 |
| 1120 | 5.52 - j3.09 | 3.24 - j1.40 |
| 1130 | 5.68 - j3.13 | 3.12 - j1.39 |
| 1140 | 5.89 - j3.20 | 2.99 - j1.36 |
| 1150 | 6.06 - j3.32 | 2.88 - j1.30 |
| 1160 | 6.09 - j3.47 | 2.83 - j1.23 |
| 1170 | 5.98 - j3.60 | 2.83 - j1.19 |
| 1180 | 5.85 - j3.69 | 2.80 - j1.15 |
| 1190 | 5.78 - j3.76 | 2.75 - j1.11 |
| 1200 | 5.81 - j3.87 | 2.65 - j1.07 |
| 1210 | 5.89 - j4.02 | 2.52 - j1.01 |
| 1215 | 5.91 - j4.11 | 2.47 - j0.97 |

Z_{source} = Test circuit impedance as measured from gate to ground.

Z_{load} = Test circuit impedance as measured from drain to ground.

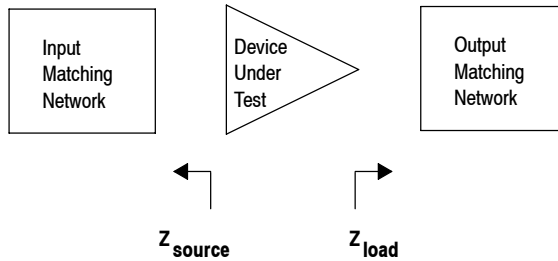
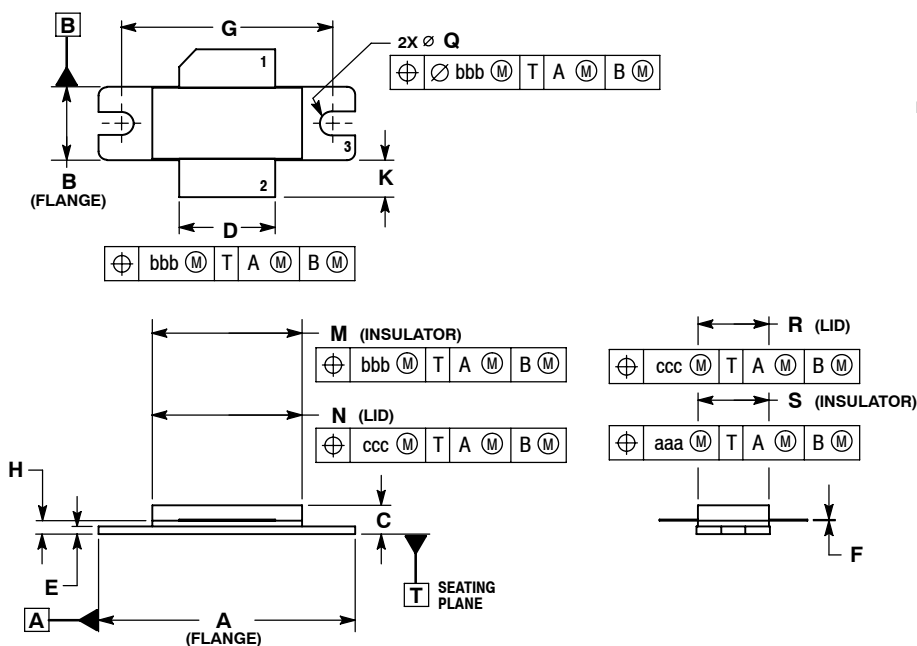


Figure 16. Series Equivalent Source and Load Impedance — 960-1215 MHz

PACKAGE DIMENSIONS

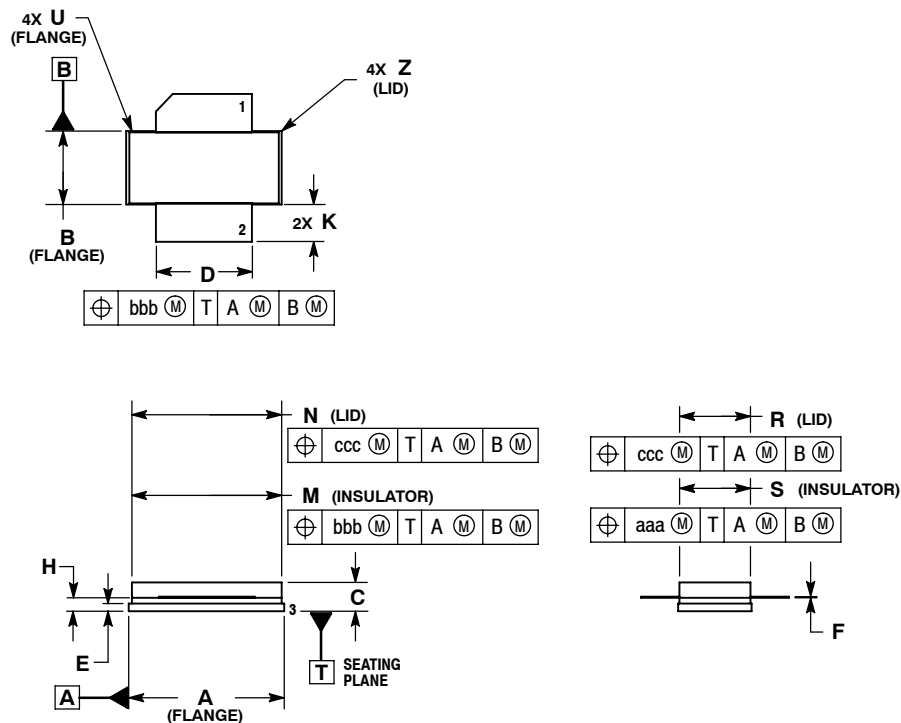


- NOTES:
1. DIMENSIONING AND TOLERANCING PER ANSI Y14.5M-1994.
 2. CONTROLLING DIMENSION: INCH.
 3. DELETED
 4. DIMENSION H IS MEASURED 0.030 (0.762) AWAY FROM PACKAGE BODY.

| DIM | INCHES | | MILLIMETERS | |
|-----|-----------|-------|-------------|--------|
| | MIN | MAX | MIN | MAX |
| A | 1.335 | 1.345 | 33.91 | 34.16 |
| B | 0.380 | 0.390 | 9.65 | 9.91 |
| C | 0.125 | 0.170 | 3.18 | 4.32 |
| D | 0.495 | 0.505 | 12.57 | 12.83 |
| E | 0.035 | 0.045 | 0.89 | 1.14 |
| F | 0.003 | 0.006 | 0.08 | 0.15 |
| G | 1.100 BSC | | 27.94 BSC | |
| H | 0.057 | 0.067 | 1.45 | 1.70 |
| K | 0.170 | 0.210 | 4.32 | 5.33 |
| M | 0.774 | 0.786 | 19.66 | 19.96 |
| N | 0.772 | 0.788 | 19.60 | 20.00 |
| Q | Ø 118 | Ø 138 | Ø 3.00 | Ø 3.51 |
| R | 0.365 | 0.375 | 9.27 | 9.53 |
| S | 0.365 | 0.375 | 9.27 | 9.52 |
| aaa | 0.005 REF | | 0.127 REF | |
| bbb | 0.010 REF | | 0.254 REF | |
| ccc | 0.015 REF | | 0.381 REF | |

- STYLE 1:
 PIN 1. DRAIN
 2. GATE
 3. SOURCE

**CASE 465-06
 ISSUE G
 NI-780
 MRF6V12250HR3**



- NOTES:
1. DIMENSIONING AND TOLERANCING PER ANSI Y14.5M-1994.
 2. CONTROLLING DIMENSION: INCH.
 3. DELETED
 4. DIMENSION H IS MEASURED 0.030 (0.762) AWAY FROM PACKAGE BODY.

| DIM | INCHES | | MILLIMETERS | |
|-----|-----------|-------|-------------|-------|
| | MIN | MAX | MIN | MAX |
| A | 0.805 | 0.815 | 20.45 | 20.70 |
| B | 0.380 | 0.390 | 9.65 | 9.91 |
| C | 0.125 | 0.170 | 3.18 | 4.32 |
| D | 0.495 | 0.505 | 12.57 | 12.83 |
| E | 0.035 | 0.045 | 0.89 | 1.14 |
| F | 0.003 | 0.006 | 0.08 | 0.15 |
| H | 0.057 | 0.067 | 1.45 | 1.70 |
| K | 0.170 | 0.210 | 4.32 | 5.33 |
| M | 0.774 | 0.786 | 19.61 | 20.02 |
| N | 0.772 | 0.788 | 19.61 | 20.02 |
| R | 0.365 | 0.375 | 9.27 | 9.53 |
| S | 0.365 | 0.375 | 9.27 | 9.52 |
| U | --- | 0.040 | --- | 1.02 |
| Z | --- | 0.030 | --- | 0.76 |
| aaa | 0.005 REF | | 0.127 REF | |
| bbb | 0.010 REF | | 0.254 REF | |
| ccc | 0.015 REF | | 0.381 REF | |

- STYLE 1:
 PIN 1. DRAIN
 2. GATE
 5. SOURCE

**CASE 465A-06
 ISSUE H
 NI-780S
 MRF6V12250HSR3**

MRF6V12250HR3 MRF6V12250HSR3

PRODUCT DOCUMENTATION AND SOFTWARE

Refer to the following documents, tools and software to aid your design process.

Application Notes

- AN1955: Thermal Measurement Methodology of RF Power Amplifiers

Engineering Bulletins

- EB212: Using Data Sheet Impedances for RF LDMOS Devices

Software

- Electromigration MTTF Calculator
- RF High Power Model

For Software, do a Part Number search at <http://www.freescale.com>, and select the “Part Number” link. Go to the Software & Tools tab on the part’s Product Summary page to download the respective tool.

REVISION HISTORY

The following table summarizes revisions to this document.

| Revision | Date | Description |
|----------|-----------|-------------------------------------------------------------------------------------------------------------------------------------------------------------------------------------------------------------------------------------------------------------------------------------------------------------------------------------------------------------------------------------------------------------------------------------------------------------------------------------------------------------------------------------------------------------------------------------------------------------------------------------------------------------------------------------------------------------------------------------------------------------------------------------------------------------------------------------------------------------------------------------------------------------------------------------------------------------------------|
| 0 | May 2009 | <ul style="list-style-type: none">• Initial Release of Data Sheet |
| 1 | July 2009 | <ul style="list-style-type: none">• Updated Typical Broadband Performance bullet to include V_{DD}, I_{DQ} and Pulsed information. Provided specific values for Power Gain and Drain Efficiency, p. 1• Added Typical Performance table for 960-1215 MHz application, p. 2• Changed “EKMG630ELL471MK25S” part number to “MCGPA63V477M13X26-RH”, Table 5, Test Circuit Component Designations and Values, p. 3• Added Fig. 5, Safe Operating Area, p. 5• Added Fig. 13, Test Circuit Component Layout - 960-1215 MHz and Table 6, Test Circuit Component Designations and Values - 960-1215 MHz, p. 8• Added Fig. 14, Power Gain and Drain Efficiency versus Output Power - 960-1215 MHz, p. 9• Added Fig 15, Broadband Performance @ Pout = 250 Watts Peak - 960-1215 MHz, p. 9• Added Fig. 16, Series Equivalent Source and Load Impedance - 960-1215 MHz, p. 10 |
| 2 | Apr. 2010 | <ul style="list-style-type: none">• Operating Junction Temperature increased from 200°C to 225°C in Maximum Ratings table and related “Continuous use at maximum temperature will affect MTTF” footnote added, p. 1• Reporting of pulsed thermal data now shown using the $Z_{\theta JC}$ symbol, p. 1• Added RF High Power Model availability to Product Software, p. 12 |

How to Reach Us:

Home Page:

www.freescale.com

Web Support:

<http://www.freescale.com/support>

USA/Europe or Locations Not Listed:

Freescale Semiconductor, Inc.
Technical Information Center, EL516
2100 East Elliot Road
Tempe, Arizona 85284
1-800-521-6274 or +1-480-768-2130
www.freescale.com/support

Europe, Middle East, and Africa:

Freescale Halbleiter Deutschland GmbH
Technical Information Center
Schatzbogen 7
81829 Muenchen, Germany
+44 1296 380 456 (English)
+46 8 52200080 (English)
+49 89 92103 559 (German)
+33 1 69 35 48 48 (French)
www.freescale.com/support

Japan:

Freescale Semiconductor Japan Ltd.
Headquarters
ARCO Tower 15F
1-8-1, Shimo-Meguro, Meguro-ku,
Tokyo 153-0064
Japan
0120 191014 or +81 3 5437 9125
support.japan@freescale.com

Asia/Pacific:

Freescale Semiconductor China Ltd.
Exchange Building 23F
No. 118 Jianguo Road
Chaoyang District
Beijing 100022
China
+86 10 5879 8000
support.asia@freescale.com

For Literature Requests Only:

Freescale Semiconductor Literature Distribution Center
1-800-441-2447 or +1-303-675-2140
Fax: +1-303-675-2150
LDCForFreescaleSemiconductor@hibbertgroup.com

Information in this document is provided solely to enable system and software implementers to use Freescale Semiconductor products. There are no express or implied copyright licenses granted hereunder to design or fabricate any integrated circuits or integrated circuits based on the information in this document.

Freescale Semiconductor reserves the right to make changes without further notice to any products herein. Freescale Semiconductor makes no warranty, representation or guarantee regarding the suitability of its products for any particular purpose, nor does Freescale Semiconductor assume any liability arising out of the application or use of any product or circuit, and specifically disclaims any and all liability, including without limitation consequential or incidental damages. "Typical" parameters that may be provided in Freescale Semiconductor data sheets and/or specifications can and do vary in different applications and actual performance may vary over time. All operating parameters, including "Typicals", must be validated for each customer application by customer's technical experts. Freescale Semiconductor does not convey any license under its patent rights nor the rights of others. Freescale Semiconductor products are not designed, intended, or authorized for use as components in systems intended for surgical implant into the body, or other applications intended to support or sustain life, or for any other application in which the failure of the Freescale Semiconductor product could create a situation where personal injury or death may occur. Should Buyer purchase or use Freescale Semiconductor products for any such unintended or unauthorized application, Buyer shall indemnify and hold Freescale Semiconductor and its officers, employees, subsidiaries, affiliates, and distributors harmless against all claims, costs, damages, and expenses, and reasonable attorney fees arising out of, directly or indirectly, any claim of personal injury or death associated with such unintended or unauthorized use, even if such claim alleges that Freescale Semiconductor was negligent regarding the design or manufacture of the part.

Freescale™ and the Freescale logo are trademarks of Freescale Semiconductor, Inc. All other product or service names are the property of their respective owners.

© Freescale Semiconductor, Inc. 2009-2010. All rights reserved.

X-ON Electronics

Largest Supplier of Electrical and Electronic Components

Click to view similar products for [RF MOSFET Transistors](#) category:

Click to view products by [Freescale](#) manufacturer:

Other Similar products are found below :

[MRF166W](#) [MHT1006NT1](#) [FH2164](#) [MRFE8VP8600HR5](#) [BLF245](#) [BLF278](#) [ARF1511](#) [ARF465BG](#) [BF 2030 E6814](#) [BLF861A](#) [3SK263-5-TG-E](#) [VRF154FL](#) [MRF6S20010GNR1](#) [DU1215S](#) [DU28200M](#) [VRF150MP](#) [MMRF1015NR1](#) [MRF154](#) [MRF175LU](#) [MRF6S20010GNR1](#) [UF28100M](#) [MW6S010GNR1](#) [MW6S010GNR1](#) [DU2820S](#) [SD2943W](#) [SD2932BW](#) [SD2941-10W](#) [MRF24301HR5](#) [ARF469AG](#) [ARF463BP1G](#) [MMRF1019NR4](#) [MHT1008NT1](#) [MMRF1014NT1](#) [MRF426](#) [MRF422](#) [BLW96](#) [ARF468AG](#) [VRF161MP](#) [ARF468BG](#) [MRFE6VP61K25NR6](#) [MRFE6VP5300NR1](#) [A2T27S020NR1](#) [MMRF1304NR1](#) [MRFE6S9060GNR1](#) [MMRF1008GHR5](#) [A2T27S007NT1](#) [AFT09MP055NR1](#) [DU2860U](#) [MHT1803A](#) [D2081UK.F](#)