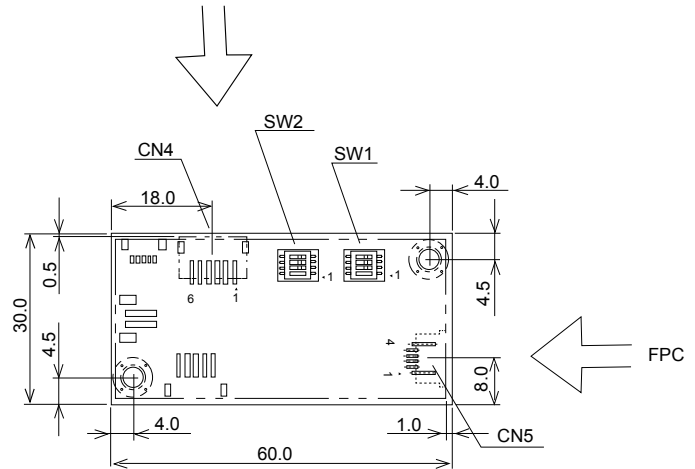


# DUAL-TOUCH CONTROL BOARD: 4-WIRE USB

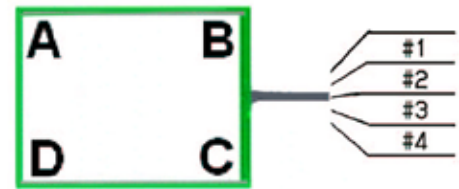
## NC01850-B045RS Dual-Touch (2-finger) Control Board Quick Reference

### 4-Wire Resistive Touch Panels



#### ■ FEATURES

- Multi-touch functionality with 2 fingers: pinch, expand, rotate, flick
- Use with Fujitsu Feather Touch 4-wire resistive touch panel
- High quality and reliability
- USB 2.0 bus powered interface for direct connection
- Switch selectable origin point
- RoHS compliant



Origin (0,0) Point

#### ■ SWITCH SETTINGS

##### SWITCH 1

SW1-1	Orientation mode selection switches	OFF		ON		OFF		ON		<table border="1"> <thead> <tr> <th colspan="2">Connector Pin Assignment</th> </tr> </thead> <tbody> <tr> <td>#1</td> <td>Top</td> </tr> <tr> <td>#2</td> <td>Right</td> </tr> <tr> <td>#3</td> <td>Bottom</td> </tr> <tr> <td>#4</td> <td>Left</td> </tr> </tbody> </table>	Connector Pin Assignment		#1	Top	#2	Right	#3	Bottom	#4	Left
Connector Pin Assignment																				
#1		Top																		
#2		Right																		
#3	Bottom																			
#4	Left																			
SW1-2	ON		OFF		OFF		ON													
SW1-3	OFF		OFF		ON		ON													
SW1-4	Reserved	OFF		OFF		OFF		OFF												

Type A

SW1-1	Orientation mode selection switches	ON		OFF		ON		OFF		<table border="1"> <thead> <tr> <th colspan="2">Connector Pin Assignment</th> </tr> </thead> <tbody> <tr> <td>#1</td> <td>Left</td> </tr> <tr> <td>#2</td> <td>Top</td> </tr> <tr> <td>#3</td> <td>Right</td> </tr> <tr> <td>#4</td> <td>Bottom</td> </tr> </tbody> </table>	Connector Pin Assignment		#1	Left	#2	Top	#3	Right	#4	Bottom
Connector Pin Assignment																				
#1		Left																		
#2		Top																		
#3	Right																			
#4	Bottom																			
SW1-2	OFF		OFF		ON		ON													
SW1-3	OFF		ON		ON		OFF													
SW1-4	Reserved	OFF		OFF		OFF		OFF												





Type B

#### Notes:





Connector Pin Assignment listed on individual touch panel drawings.

# USB 4 -Wire Control Board

## SWITCH 2

SW2-1	Reserved	ON		ON		ON		ON		<table border="1"> <tr><th colspan="2">Connector Pin Assignment</th></tr> <tr><td>#1</td><td>Top</td></tr> <tr><td>#2</td><td>Right</td></tr> <tr><td>#3</td><td>Bottom</td></tr> <tr><td>#4</td><td>Left</td></tr> </table>	Connector Pin Assignment		#1	Top	#2	Right	#3	Bottom	#4	Left
Connector Pin Assignment																				
#1	Top																			
#2	Right																			
#3	Bottom																			
#4	Left																			
SW2-2	Dual/single touch mode select	ON	ON	ON	ON															
SW2-3	Digitizer/mouse mode select	ON	ON	ON	ON															
SW2-4	Reserved	ON	ON	ON	ON															

Type A

SW2-1	Reserved	ON		ON		ON		ON		<table border="1"> <tr><th colspan="2">Connector Pin Assignment</th></tr> <tr><td>#1</td><td>Top</td></tr> <tr><td>#2</td><td>Right</td></tr> <tr><td>#3</td><td>Bottom</td></tr> <tr><td>#4</td><td>Left</td></tr> </table>	Connector Pin Assignment		#1	Top	#2	Right	#3	Bottom	#4	Left
Connector Pin Assignment																				
#1	Top																			
#2	Right																			
#3	Bottom																			
#4	Left																			
SW2-2	Dual/single touch mode select	ON	ON	ON	ON															
SW2-3	Digitizer/mouse mode select	ON	ON	ON	ON															
SW2-4	Reserved	ON	ON	ON	ON															

Type B

## ■ CONSTRUCTION

Specification Item		NC01850-B045RS 4-Wire Dual-Touch Control Board
Mechanical	Size / Weight	60mm x 30mm / 25 grams
Electrical	Supply Voltage (min./max.)	Vcc 4.5 / 5.5 V USB bus powered
	Operating Current (detect)	20mA @ Vcc 5.0V and 25°C
	Sleep Mode Current	24 microAmps @ Vcc. 5.0V and 25°C
Environment	Operating Temperature	-5°C to +60°C
	Storage Temperature	-30°C to +70°C
	Humidity	20% RH to 85% RH at 38°C maximum wet bulb temperature

## ■ TOUCH PANEL CONNECTION CN5 (FCI: SFW4R-1STAE1-LF)

## ■ INTERFACE CONNECTION CN4 (JST S6B-ZR-SM4 (LF) (SN))

1.	+5V (Vcc)	3.	D+ (Signal)	5.	Frame ground
2.	D- (Signal)	4.	Ground (Vss)	6.	N.C.

Complete specification document is available on request for customers with whom we have an approved NDA in place.

## Fujitsu Components International Headquarter Offices

<p><b>Japan</b>  Fujitsu Component Limited  Gotanda-Chuo Building  3-5, Higashigotanda 2-chome, Shinagawa-ku  Tokyo 141, Japan  Tel: (81-3) 5449-7010 / Fax: (81-3) 5449-2626  Email: promothq@fcl.fujitsu.com  Web: www.fcl.fujitsu.com</p> <p><b>North and South America</b>  Fujitsu Components America, Inc.  250 E. Caribbean Drive  Sunnyvale, CA 94089 U.S.A.  Tel: (1-408) 745-4900 / Fax: (1-408) 745-4970  Email: components@us.fujitsu.com  Web: http://us.fujitsu.com/components/</p>	<p><b>Europe</b>  Fujitsu Components Europe B.V.  Diamantlaan 25  2132 WV Hoofddorp, Netherlands  Tel: (31-23) 5560910 / Fax: (31-23) 5560950  Email: info@fceu.fujitsu.com  Web: emea.fujitsu.com/components/</p> <p><b>Asia Pacific</b>  Fujitsu Components Asia Ltd.  102E Pasir Panjang Road  #01-01 Citilink Warehouse Complex  Singapore 118529  Tel: (65) 6375-8560 / Fax: (65) 6273-3021  Email: fcal@fcal.fujitsu.com  Web: http://www.fujitsu.com/sg/services/micro/components/</p>
---	---

©2013 Fujitsu Components America, Inc. All rights reserved. All trademarks or registered trademarks are the property of their respective owners. Fujitsu Components America or its affiliates do not warrant that the content of datasheet is error free. In a continuing effort to improve our products Fujitsu Components America, Inc. or its affiliates reserve the right to change specifications/datasheets without prior notice.  
Rev. January 7, 2013

## X-ON Electronics

Largest Supplier of Electrical and Electronic Components

*Click to view similar products for [LCD Touch Panels](#) category:*

*Click to view products by [Fujitsu](#) manufacturer:*

Other Similar products are found below :

[98-0003-2669-8](#) [CABLE/RTP/USB](#) [98-0003-2933-8](#) [17-8041-226](#) [17-8041-227](#) [CABLE/RTP/RS232](#) [N010-0557-T002](#) [N010-0557-T011](#)  
[NA5-15W101B-V1](#) [LCDAL04-0430TL0NCNTBR1.0](#) [TP01106W-4KB](#) [FTAS00-15AN-4](#) [FTAS00-12.1AW-4A](#) [17-8021-227](#) [17-8031-205](#)  
[17-8031-227](#) [17-8091-203](#) [17-8421-205](#) [17-8421-227](#) [17-8441-205](#) [17-8511-205](#) [17-8541-205](#) [17-8541-226](#) [17-8891-227](#) [17-8901-226](#) [98-](#)  
[0003-2185-5](#) [98-0003-2617-7](#) [98-0003-2919-7](#) [98-0003-2955-1](#) [98-0003-3140-9](#) [98-0003-3190-4](#) [98-0003-3505-3](#) [98-1100-0606-5](#) [98-1100-](#)  
[0638-8](#) [EA TOUCH240-4](#) [N010-0519-T742](#) [N010-0554-T043](#) [N010-0554-T703](#) [EA TOUCH102-1](#) [EA TOUCH128-1](#) [EA TOUCH128-2](#)  
[EA TOUCH160-1](#) [LCD-OLINUXINO-10CTS](#) [TS-320240BRNO](#) [FTAS00-104A5](#) [FTAS00-104AS4](#) [FTAS00-121A4](#) [FTAS00-121A5](#)  
[FTAS00-150A5](#) [FTAS225-57AN](#)