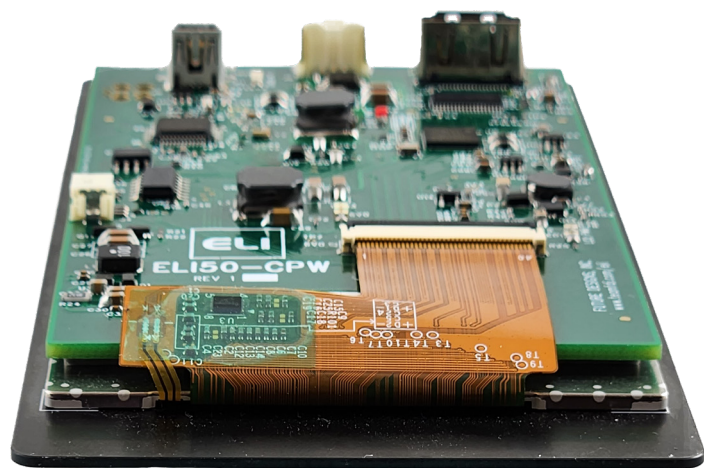
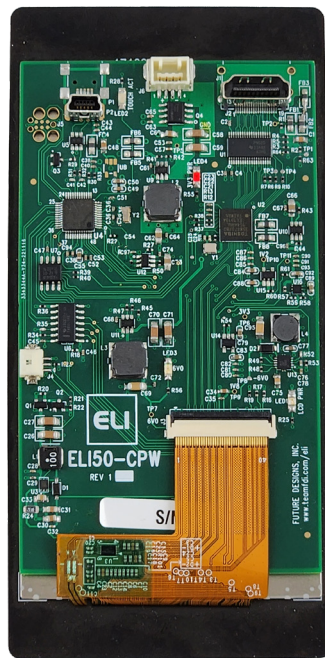
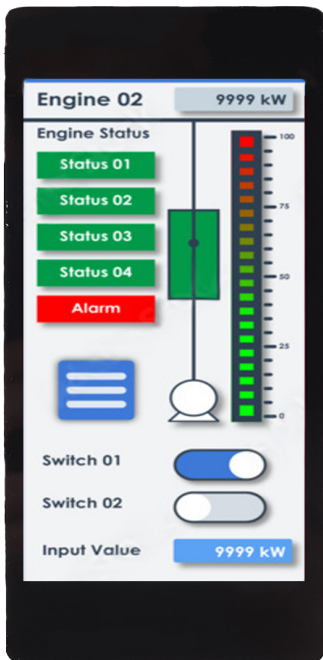


# FDI

# ELI

TM

## 5.0" PCAP Touch Screen LCD Module for SBCs



## Specifications

- Screen Size: 5.0 inches (vertical)
- Display Technology: a-Si SFT LCD
- Resolution: 720 x 1280 (WVGA)
- Brightness: 300 nits (typ)
- Contrast Ratio: 1000 : 1 (typ)
- Aspect Ratio: Wide 19:6
- Interface Input Mode: HDMI / DVI
- Colors: 16.7M (24 bit)
- Horizontal Viewing Angle: 85/85° L/R
- Vertical Viewing Angle: 85°/85° U/D
- Surface: 1.1 mm anti-fingerprint treated glass
- Reverse Scan: U/D, L/R
- Touch Screen: In-cell PCAP
- Touch Screen Interface: USB Device
- Touch Panel Hardness: 6H
- Touch Panel Force: 100gF (max)
- Active Area: 62.10 (W) x 110.40 (H) mm
- Response Time: 30ms (typ)
- Backlight: 12 LEDs
- Backlight Life: 30K hours (typ)
- Backlight Power Consumption: up to 61% of total
- Operating Temperature: -20° to 70° C
- Storage Temperature: -30° to 80° C
- Input Voltage: 7.5 - 17.0 VDC (±5% tolerance)
- Power Consumption: 150/250mA @ 12V (typ/max)
- RoHS Compliant: Yes
- Dimensions: 71.64 (W) x 145.4 (H) x 14.9 (D) mm
- Mounting: 3M 300LSE tape
- Weight: 94 grams (typ)

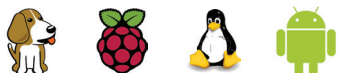
## ELI50-CPW

- **Cost-Effective Commercial Version**
- **5.0" WVGA LCD Panel with LED Backlight**
- **Suggested Resale Price: \$170.00 (qty 1)**
- **Volume Pricing: \$140.00 (1Ku)**

## Features

- PCAP Touchscreen with USB Device Interface
- Plug and Play interface to standard SBCs
- HDMI or DVI Input
- +12 Volt DC Input Power (typ)
- 300 nits Brightness (typical)
- 1000:1 Contrast Ratio (typical)
- EDID Support for Automatic Screen Configuration
- -30° to +80° C Operating Temperature Range
- Franchised Distribution Stocking
- Part Number: ELI50-CPW

Compatible  
With:



Available From:



[www.teamfdi.com](http://www.teamfdi.com)  
(256) 883-1240



@TeamFDI  
#TeamFDI



[YouTube.com/  
FDIProducts](https://www.youtube.com/TeamFDI)

## X-ON Electronics

Largest Supplier of Electrical and Electronic Components

*Click to view similar products for [Display Modules](#) category:*

*Click to view products by [Future Designs](#) manufacturer:*

Other Similar products are found below :

[P6171DPR-DC-U](#) [P6191PR-DC-U-V3](#) [17978](#) [20135](#) [MIKROMEDIA 3 FOR PIC32MZ CAPACITIVE FPI](#) [19885](#)

[RL0F00101000JGDAASA00](#) [1500CSH](#) [MOD-OLED-128x64](#) [ULCD-104D](#) [ULCD-104DCT](#) [GEN4-ESP32-50CT](#) [GEN4-ESP32-50CT-CLB](#)

[GEN4-ESP32-70](#) [GEN4-ESP32-50T](#) [GEN4-ESP32-24](#) [GEN4-ESP32-35CT](#) [GEN4-ESP32-32](#) [GEN4-ESP32-43T](#) [GEN4-ESP32-35](#) [GEN4-](#)

[ESP32-32CT](#) [GEN4-ESP32-24CT](#) [GEN4-ULCD-43DT-HR](#) [GEN4-ESP32-43CT](#) [ESP32-90CT](#) [GEN4-ESP32-50](#) [GEN4-ESP32-32CT-CLB](#)

[ESP32-90T](#) [DM2-170H-R10](#) [gen4-uLCD-70P4CT-CLB](#) [6SL32550AA004JA2](#) [6SL32550AA004CA1](#) [3D32HK-200](#) [11769](#) [MIKROMEDIA](#)

[FOR DSPIC33](#) [MIKROMEDIA FOR PIC24](#) [MIKROMEDIA FOR PIC32](#) [MIKROMEDIA FOR STELLARIS M3](#) [MIKROMEDIA HMI 3.5](#)

[RES](#) [MIKROMEDIA HMI 5](#) [MIKROMEDIA PLUS FOR FT90X](#) [MIKROMEDIA PLUS FOR PIC32MX7 SHIELD](#) [MIKROMEDIA 5 FOR](#)

[TIVA SHIELD](#) [MIKROMEDIA CONNECT SHIELD](#) [MIKROMEDIA FOR ARM](#) [MIKROMEDIA FOR PSOC5LP](#) [MIKROMEDIA HMI 4.3](#)

[UXB](#) [MIKROMEDIA HMI 5 RES](#) [MIKROMEDIA HMI 5 UXB](#) [MIKROMEDIA HMI 7](#)