

GROMMET AND HOLE PLUG KITS



Kit No. HD-4209

Vinyl Grommet Kit for 1/4", 5/16", 3/8", 7/16", 1/2" and 5/8" Mount Holes.

Refill Part No.	Quantity Per Kit	Description	Mounting Hole (Inches)	Panel Thickness (Inches)	Thickness (Inches)	Inner Diameter (Inches)	Outer Diameter (Inches)
G-401	70	Vinyl Grommet	1/4	1/16	3/16	1/8	11/32
G-402	40	Vinyl Grommet	5/16	1/16	7/32	3/16	7/16
G-403	25	Vinyl Grommet	3/8	1/16	1/4	1/4	9/16
G-404	20	Vinyl Grommet	7/16	1/16	1/4	5/16	5/8
G-405	20	Vinyl Grommet	1/2	1/16	1/4	3/8	5/8
G-406	10	Vinyl Grommet	5/8	1/16	9/32	1/2	13/16

Kit No. HD-4210

Rubber Grommet Kit for 1/4", 5/16", 3/8", 1/2", 5/8" and 3/4" Mount Holes.

Refill Part No.	Quantity Per Kit	Description	Mounting Hole (Inches)	Panel Thickness (Inches)	Thickness (Inches)	Inner Diameter (Inches)	Outer Diameter (Inches)
11-284-C	100	Rubber Grommet	1/4	1/16	3/16	1/8	11/32
G-305	40	Rubber Grommet	5/16	1/16	7/32	3/16	7/16
11-292-BU	30	Rubber Grommet	3/8	1/16	1/4	1/4	9/16
11-300-BU	20	Rubber Grommet	1/2	1/16	1/4	3/8	5/8
11-304-BU	10	Rubber Grommet	5/8	1/16	9/32	1/2	13/16
11-308-BU	10	Rubber Grommet	3/4	1/16	15/64	9/16	7/8

Kit No. HD-4211

Nickel-plated Snap Button Hole Plug Kit for 1/4", 3/8", 1/2", 3/4" and 1" Mount Holes.

Refill Part No.	Quantity Per Kit	Description	Mounting Hole (Inches)
HP-1	25	Nickel-plated Hole Plug	1/4
HP-2	15	Nickel-plated Hole Plug	3/8
HP-3	10	Nickel-plated Hole Plug	1/2
HP-4	5	Nickel-plated Hole Plug	3/4
HP-5	5	Nickel-plated Hole Plug	1
11-392-C	3	Nickel-plated Screen Vent Hole Plug	1

GROMMETS and HOLE PLUGS



Fig. 1



Fig. 2

Grommets

CLAMSHELL Part No.	Qty	POLYBAG Part No.	Qty	BULK Part No.	Qty	N.S.N. No.	Fig. No.	Description	Mount Hole (Inches)	Panel Thickness (Inches)	Thickness (Inches)	Diameter (Inches)	
												Inner	Outer
				G-300-C	100		1	Rubber Grommet	1/4	1/16	3/16	1/8	11/32
KG-302	8	G-302-P	50				1	Rubber Grommet	1/2	1/16	1/4	3/8	21/32
				G-305H-C	100		1	Rubber Grommet	5/16	1/16	3/16	3/16	7/16
		G-307-P	50				1	Rubber Grommet	19/32	3/64	1/4	7/16	3/4
				G-309-C	100		1	Rubber Grommet	15/32	1/16	1/4	11/32	5/8
		G-311-P	25				1	Rubber Grommet	7/8	1/16	5/16	5/8	1-1/8
		11-284-BU	10	11-284-C	100	5325-00-975-1803	1	Rubber Grommet	1/4	1/16	3/16	1/8	11/32
		11-292-BU	10	11-292-C	100	5325-00-682-2080	1	Rubber Grommet	3/8	1/16	1/4	1/4	9/16
		11-300-BU	10	11-300-C	100		1	Rubber Grommet	1/2	1/16	1/4	3/8	5/8
		11-304-BU	10	11-304-C	100	5325-00-202-2515	1	Rubber Grommet	5/8	1/16	9/32	1/2	13/16
		11-308-BU	10	11-308-C	100	5340-00-814-5884	1	Rubber Grommet	3/4	1/16	15/64	9/16	7/8
		11-312-BU	10	11-312-C	100	5325-00-474-7083	1	Rubber Grommet	7/8	1/16	5/16	5/8	1-1/8
		11-316-BU	10	11-316-C	100	5325-00-071-3189	1	Rubber Grommet	1	1/16	3/8	11/16	1-5/16
KG-401	15			G-401-C	100		2	Vinyl Grommet	1/4	1/16	3/16	1/8	11/32
KG-402	10			G-402-C	100		2	Vinyl Grommet	5/16	1/16	7/32	3/16	7/16
KG-403	10			G-403-C	100		2	Vinyl Grommet	3/8	1/16	1/4	1/4	9/16
KG-404	10			G-404-C	100		2	Vinyl Grommet	7/16	1/16	1/4	5/16	5/8
KG-405	10			G-405-C	100		2	Vinyl Grommet	1/2	1/16	1/4	3/8	5/8
KG-406	5			G-406-C	100		2	Vinyl Grommet	5/8	1/16	9/32	1/2	13/16
KG-407	4			G-407-C	100		2	Vinyl Grommet	7/8	1/16	9/32	5/8	1-1/8



Fig. 3



Fig. 4

Hole Plugs

CLAMSHELL Part No.	Qty	POLYBAG Part No.	Qty	BULK Part No.	Qty	N.S.N. No.	Fig. No.	Description	Mount Hole (Inches)
KHP-1	8			HP-1-C	100		3	Steel, Nickel Plated Hole Plug	1/4
KHP-2	4			HP-2-C	100		3	Steel, Nickel Plated Hole Plug	3/8
KHP-3	6			HP-3-C	100		3	Steel, Nickel Plated Hole Plug	1/2
KHP-4	5	HP-4-P	50				3	Steel, Nickel Plated Hole Plug	3/4
KHP-5	3	HP-5-P	25				3	Steel, Nickel Plated Hole Plug	1
				11-344-C	100	5340-00-816-3421	3	Steel, Nickel Plated Hole Plug	1/4
				11-348-C	100		3	Steel, Nickel Plated Hole Plug	5/16
				11-356-C	100	5340-00-782-8713	3	Steel, Nickel Plated Hole Plug	1/2
				11-360-C	100	5340-00-816-3423	3	Steel, Nickel Plated Hole Plug	5/8
				11-364-C	100		3	Steel, Nickel Plated Hole Plug	3/4
				11-368-C	100		3	Steel, Nickel Plated Hole Plug	7/8
				11-388-C	100	5340-00-816-3424	3	Steel, Nickel Plated Hole Plug	1
				11-392-C	100	5340-00-587-1331	4	Steel, Nickel Plated Screened Vent Hole Plug	1

KNOB



Fig. 1



Fig. 2



Fig. 3



Fig. 4



Fig. 5



Fig. 6

Control Knobs

Retail Part No.	Quantity per Package	Figure No.	Description	Outer Diameter (Inches)	Height (Inches)	Shaft Size (Inches)	Recessed for Locknut	Brass Insert
790-1126	1	1	Round Skirted Control Knob	1 1/2	11/16	1/4	Yes	No
WA-1600	1	1	Round Skirted Control Knob	1 1/2	9/16	1/4	Yes	No
WA-1600-P	5	1	Round Skirted Control Knob	1 1/2	9/16	1/4	Yes	No
WA-1600A	1	1	Round Skirted Control Knob	1 1/2	9/16	1/4	Yes	Yes
WA-1600A-P	5	1	Round Skirted Control Knob	1 1/2	9/16	1/4	Yes	Yes
WA-1610A	1	1	Round Skirted Control Knob	1	9/16	1/4	Yes	Yes
790-1124	1	2	Bar Control Knob	1 1/8	9/16	1/4	Yes	No
WA-1500	1	2	Bar Control Knob	1 1/8	9/16	1/4	Yes	No
WA-1500-P	5	2	Bar Control Knob	1 1/8	9/16	1/4	Yes	No
WA-1510	1	2	Bar Control Knob	3/4	9/16	1/4	Yes	No
WA-1510-P	5	2	Bar Control Knob	3/4	9/16	1/4	Yes	No
WA-1520	1	2	Bar Control Knob	1 1/2	3/4	1/4	Yes	No
WA-1520-P	5	2	Bar Control Knob	1 1/2	3/4	1/4	Yes	No

Lever Knobs

Retail Part No.	Quantity per Package	Figure No.	Description	Length (Inches)	Height (Inches)	Shaft Size (Inches)	Recessed for Locknut	Brass Insert
WA-2110A	1	3	Short Lever Knob	1 5/8	19/32	1/4	Yes	Yes
WA-2100A	1	3	Long Lever Knob	2 1/2	5/8	1/4	Yes	Yes
WA-2100A-P	5	3	Long Lever Knob	2 1/2	5/8	1/4	Yes	Yes

Instrument Knobs

Retail Part No.	Quantity per Package	Figure No.	Description	Outer Diameter (Inches)	Height (Inches)	Shaft Size (Inches)	Recessed for Locknut	Brass Insert
790-1051	1	4	Fluted Skirted Instrument Knob	3/4	1/2	1/4	Yes	No
790-1052	1	4	Fluted Skirted Instrument Knob	1 1/8	5/8	1/4	Yes	No
WA-101	1	4	Fluted Skirted Instrument Knob	3/4	1/2	1/4	Yes	No
WA-101-P	5	4	Fluted Skirted Instrument Knob	3/4	1/2	1/4	Yes	No
WA-101C	1	4	Fluted Skirted Instrument Knob	3/4	1/2	1/8	Yes	No
WA-101C-P	5	4	Fluted Skirted Instrument Knob	3/4	1/2	1/8	Yes	No
WA-102	1	4	Fluted Skirted Instrument Knob	1 1/8	5/8	1/4	Yes	No
WA-102-P	5	4	Fluted Skirted Instrument Knob	1 1/8	5/8	1/4	Yes	No
WA-102B	1	4	Fluted Skirted Instrument Knob	1 1/8	5/8	1/4	Yes	Yes
WA-102B-P	5	4	Fluted Skirted Instrument Knob	1 1/8	5/8	1/4	Yes	Yes
WA-103	1	4	Fluted Skirted Instrument Knob	1 1/4	3/4	1/4	Yes	No
WA-103-P	5	4	Fluted Skirted Instrument Knob	1 1/4	3/4	1/4	Yes	No
WA-103B	1	4	Fluted Skirted Instrument Knob	1 1/4	3/4	1/4	Yes	Yes
WA-103B-P	5	4	Fluted Skirted Instrument Knob	1 1/4	3/4	1/4	Yes	Yes
WA-104B	1	4	Fluted Skirted Instrument Knob	1 1/2	7/8	1/4	Yes	Yes
WA-105B	1	4	Fluted Skirted Instrument Knob	2	15/16	1/4	Yes	Yes
WA-105B-P	5	4	Fluted Skirted Instrument Knob	2	15/16	1/4	Yes	Yes
WA-106S	1	5	Fluted Skirted Instrument Knob, with Silver Inlay	1 1/4	3/4	1/4	Yes	No
WA-4100	1	6	Fully Fluted Stemmed Instrument Knob	1 1/8	5/8	1/4	Yes	Yes
WA-4100-P	5	6	Fully Fluted Stemmed Instrument Knob	1 1/8	5/8	1/4	Yes	Yes
WA-4100D	1	6	Fully Fluted Stemmed Instrument Knob	1 1/8	5/8	1/4	No	Yes
WA-4101	1	6	Fully Fluted Stemmed Instrument Knob	1 3/8	11/16	1/4	Yes	Yes
WA-4102	1	6	Fully Fluted Stemmed Instrument Knob	1 5/8	3/4	1/4	Yes	Yes
WA-4103	1	6	Fully Fluted Stemmed Instrument Knob	2 3/8	7/8	1/4	Yes	Yes
WA-4103-P	5	6	Fully Fluted Stemmed Instrument Knob	2 3/8	7/8	1/4	Yes	Yes

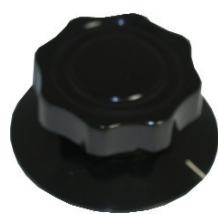


Fig. 1



Fig. 2



Fig. 3



Fig. 4



Fig. 5



Fig. 6



Fig. 7



Fig. 8



Fig. 9



Fig. 10



Fig. 11



Fig. 12

Instrument Knobs (Continued)

Retail Part No.	Quantity per Package	Figure No.	Description	Outer Diameter (Inches)	Height (Inches)	Shaft Size (Inches)	Recessed for Locknut	Brass Insert
WA-4104	1	1	Fully Fluted Skirted/Stemmed Instrument Knob	1 1/2	51/64	1/4	Yes	Yes
WA-4107	1	1	Fully Fluted Skirted/Stemmed Instrument Knob	1 3/4	7/8	1/4	Yes	Yes
WA-4108	1	1	Fully Fluted Skirted/Stemmed Instrument Knob	2 1/16	7/8	1/4	Yes	Yes
WA-4108-P	5	1	Fully Fluted Skirted/Stemmed Instrument Knob	2 1/16	7/8	1/4	Yes	Yes
WA-4109	1	1	Fully Fluted Skirted/Stemmed Instrument Knob	3	1	1/4	Yes	Yes
WA-4109-P	5	1	Fully Fluted Skirted/Stemmed Instrument Knob	3	1	1/4	Yes	Yes
WA-1200	1	2	Round Instrument Knob, with Silver Inlay	1/2	5/8	1/4	No	No
WA-1200-P	5	2	Round Instrument Knob, with Silver Inlay	1/2	5/8	1/4	No	No
WA-1202	1	2	Round Instrument Knob, with Silver Inlay	3/4	5/8	1/4	Yes	No
WA-1202-P	5	2	Round Instrument Knob, with Silver Inlay	3/4	5/8	1/4	Yes	No
WA-1204	1	2	Round Instrument Knob, with Silver Inlay	1	11/16	1/4	Yes	No
WA-1204-P	5	2	Round Instrument Knob, with Silver Inlay	1	11/16	1/4	Yes	No
WA-1208	1	2	Round Instrument Knob, with Silver Inlay	1 3/4	13/16	1/4	Yes	No
WA-1208-P	5	2	Round Instrument Knob, with Silver Inlay	1 3/4	13/16	1/4	Yes	No
WA-1450	1	3	Round Instrument Knob	11/16	13/32	1/4	No	No
WA-1450G	1	3	Round Instrument Knob	11/16	13/32	1/8	No	No
WA-1475	1	3	Round Instrument Knob	1	1/2	1/4	Yes	No
WA-1475-P	5	3	Round Instrument Knob	1	1/2	1/4	Yes	No
790-1303	1	4	Round Military Instrument Knob	3/4	5/8	1/4	Yes	Yes
790-1308	1	5	Round Skirted Military Instrument Knob	1/2	11/16	1/8	Yes	Yes
790-1335	1	5	Round Skirted Military Instrument Knob	3/4	3/4	1/4	Yes	Yes
790-1260	1	6	Round Skirted Instrument Knob, with Silver Inlay	1/2	11/16	1/8	Yes	Yes
790-1261	1	6	Round Skirted Instrument Knob, with Silver Inlay	3/4	13/16	1/4	Yes	Yes

Pointer Knobs

Retail Part No.	Quantity per Package	Figure No.	Description	Length (Inches)	Height (Inches)	Shaft Size (Inches)	Recessed for Locknut	Brass Insert
WA-1210	1	7	Pointer Knob, with Silver Inlay	1	5/8	1/4	Yes	No
WA-1210-P	5	7	Pointer Knob, with Silver Inlay	1	5/8	1/4	Yes	No
790-1132	1	8	Round Pointer Knob	1 1/8	5/8	1/4	Yes	Yes
WA-1550	1	8	Round Pointer Knob	1 1/8	9/16	1/4	Yes	No
WA-1550-P	5	8	Round Pointer Knob	1 1/8	9/16	1/4	Yes	No
WA-2150	1	9	Flat-top Pointer Knob	1 1/4	9/16	1/4	Yes	No
WA-109	1	10	Fluted "Chicken Head" Pointer Knob	1 1/4	5/8	1/4	Yes	No
WA-109-P	5	10	Fluted "Chicken Head" Pointer Knob	1 1/4	5/8	1/4	Yes	No
WA-109B	1	10	Fluted "Chicken Head" Pointer Knob	1 1/4	5/8	1/4	Yes	Yes
790-1204	1	11	Ridge-top "Chicken Head" Pointer Knob	1 1/4	5/8	1/4	Yes	Yes
WA-2300	1	11	Ridge-top "Chicken Head" Pointer Knob	1 1/4	5/8	1/4	Yes	No
WA-2300A	1	11	Ridge-top "Chicken Head" Pointer Knob	1 1/4	5/8	1/4	Yes	Yes
790-1208	1	12	Ridge-top "Chicken Head" Pointer Knob, Elongated	2	5/8	1/4	Yes	Yes
WA-2350	1	12	Ridge-top "Chicken Head" Pointer Knob, Elongated	2	5/8	1/4	Yes	No

KNOBS (Cont.)



Fig. 1



Fig. 2



Fig. 3

Miscellaneous Knobs

Retail Part No.	Quantity per Package	Figure No.	Description	Outer Diameter (Inches)	Height (Inches)	Shaft Size (Inches)	Recessed for Locknut	Brass Insert
6126	1	1	Push/Pull Knob	5/8	7/16	1/4	No	Yes
30-5002-19R	1	2	Switch Knob	9/16 x 9/32	7/16	1/8 Square	No	No
790-1285	1	3	Single Bar Knob, with Silver Inlay	1/2	1/2	1/8	Yes	Yes

X-ON Electronics

Largest Supplier of Electrical and Electronic Components

Click to view similar products for [gc electronics manufacturer](#):

Other Similar products are found below :

[65-1964-15](#) [65-5020](#) [D1796](#) [ML-1156](#) [ML-7234AS15](#) [ML-PR-6](#) [9073](#) [9086](#) [12-008](#) [12-026](#) [12-073](#) [12-076](#) [12-077](#) [HD-4211](#) [12-166](#) [12-312](#) [12-634](#) [12-531](#) [12-552](#) [12-6994](#) [12-9001](#) [12-9105](#) [14-1550-8L84](#) [14-1918](#) [14-1918-1H81](#) [14-216-2F53](#) [14-1350-8L87](#) [14-218-2E83](#) [DO-16](#) [14-420-1D19](#) [14-420-1D41](#) [14-424-1B47](#) [14-424-1L18](#) [14-426-1H48](#) [14-426-1H82](#) [14-418-1E48](#) [14-420-1O83](#) [14-422-1C17](#) [14-424-1L44](#) [14-426-1K86](#) [19-820](#) [21-134](#) [P-2K-C](#) [22-272](#) [9296](#) [9300](#) [9358](#) [9486](#) [9493](#) [30-1213](#)