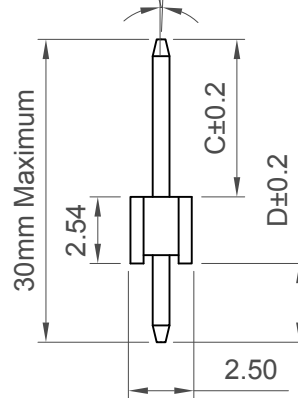


2° Max. Sway & Toe
(Either Direction At The top)



Specifications

Material

Insulator:
Standard: Polyamide, Nylon 6T, UL94V-0
Options: Polymer, LCP, UL94V-0
Polyester, PBT, UL94V-0
Contact: Copper Alloy

Plating

Contact: See ordering grid

Electrical

Current Rating: 3 Amp Per Pin
Contact Resistance: 20 mΩ max.
Insulation Resistance : 1000 MΩ min.
Dielectric Withstand Voltage: 600 V AC

Mechanical & Environmental

Operating Temperature: -40°C to +105°C

Soldering Process

Nylon 6T (Standard)
IR Reflow: 260°C for 10 sec.
Wave: 230°C for 5-10 sec
Manual Solder : 350°C for 3-5 sec
LCP (Option)
IR Reflow: 260°C for 10 sec.
Wave: 250°C for 5-10 sec.
Manual Solder: 350°C for 3-5sec
PBT (Option)
Manual Solder: 330°C for 3-5sec
(not suitable for hi-temp process)

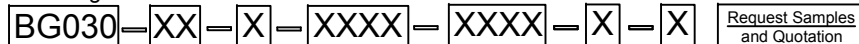
Mates with (Subject to Pin Length)

BG090 BG095 BG096 BG100 BG110
BG115 BG125 BG126 BG130 BG135
BG145 BG205 BG230

BG090 Recommended mating length 4.00mm
BG095 Recommended mating length 4.00mm

Number of Contacts	Dimensions	
	A	B
1	/	2.54
2	2.54	5.08
3	5.08	7.62
4	7.62	10.16
5	10.16	12.70
6	12.70	15.24
7	15.24	17.78
8	17.78	20.32
9	20.32	22.86
10	22.86	25.40
11	25.40	27.94
12	27.94	30.48
13	30.48	33.02
14	33.02	35.56
15	35.56	38.10
16	38.10	40.64
17	40.64	43.18
18	43.18	45.72
19	45.72	48.26
20	48.26	50.80
21	50.80	53.34
22	53.34	55.88
23	55.88	58.42
24	58.42	60.96
25	60.96	63.50
26	63.50	66.04
27	66.04	68.58
28	68.58	71.12
29	71.12	73.66
30	73.66	76.20
31	76.20	78.74
32	78.74	81.28
33	81.28	83.82
34	83.82	86.36
35	86.36	88.90
36	88.90	91.44
37	91.44	93.98
38	93.98	96.52
39	96.52	99.06
40	99.06	101.60

Ordering Grid



No. of Contacts
01 to 40

Contact Plating

A = Gold Flash All Over (Standard)
B = Selective Gold Flash Contact Area/Tin On Tail
C = Tin All Over
G = 10µ" Gold Contact Area/Tin On Tail
I = 30µ" Gold Contact Area/Tin On Tail
L = Matte Tin

Dimension C (1/100mm) (Post Height)

0400 = 4.00mm (Standard)
0450 = 4.50mm (Standard)
0650 = 6.50mm (Standard)
Or specify custom Post Height
e.g. 0250 = 2.50mm
(Maximum 2000=20.00mm)
(Minimum 0050=0.50mm)

Packing Options

G = Plastic Box (Standard)
B = Tape & Reel with Cap
D = Tube
E = Tube with Cap

Insulator Material

N = Nylon 6T (Standard)
P = PBT
L = LCP

Dimension D (1/100mm) (Tail Length)

0300 = 3.00mm (Standard)
Or specify custom Tail Length
e.g. 0250 = 2.50mm
(Maximum 2000=20.00mm)
(Minimum 0050=0.50mm)

Part Number		Product Description	
BG030		2.54mm pitch Pin Header	
Drawing Date		Single Row, Through-Hole, Vertical	
1st November 2006			
By	CC	Tolerances (Except as Noted)	Units:
Detail	BG030	Length X. ± 0.30	Metric (mm)
Revision	G5	Angle X.X ± 0.20	
Date	06/09/17	X.XX ± 0.15	
		X.XXX ± 0.10	
		X.XX° ± 1°	
		X.XXX° ± 0.5°	
		3rd Angle Projection	
		RoHS COMPLIANT 2011/65/UE	
		Deca-SIDE	
This drawing is confidential and copyright of Global Connector Technology Ltd (GCT). This drawing must not be copied or disclosed without written consent. E & OE			
Not to Scale		Drawn By LYH	Sheet No. 1/1



X-ON Electronics

Largest Supplier of Electrical and Electronic Components

Click to view similar products for [Board to Board & Mezzanine Connectors](#) category:

Click to view products by [GCT](#) manufacturer:

Other Similar products are found below :

[589158040000018](#) [MDF7C-18P-2.54DSA\(55\)](#) [FCN-230C068-11](#) [FCN-268F012-G/BD](#) [FCN-268F036-G/BD](#) [FCN-268M012-G/0D](#) [FCN-268M024-G/1D](#) [FCN-723J004/1](#) [MIS-048-01-F-D-DP-K](#) [832-10-034-10-001000](#) [FX4C-80S-1.27DSA](#) [FCN-214Q030-G/0](#) [FCN-234P048-G/0](#) [FCN-235D050-G/C](#) [210-93-314-41-105000](#) [2-22603-0](#) [MDF7-40DP-2.54DSA\(55\)](#) [AXG720047](#) [5031084030](#) [MIT-114-03-F-D-K](#) [55323-1519](#) [DF33-2P-3.3DSA\(24\)](#) [YFT-20-05-H-03-SB-K](#) [503308-3040](#) [026-6203-PDB](#) [027-6203-PDB](#) [069159702701000](#) [10123981-102LF](#) [101A10019X](#) [55650-0588-C](#) [68684-306](#) [75140-7012](#) [589159005003045](#) [194261-1](#) [FCN-268F024-G0D](#) [10124054-515LF](#) [68685-603](#) [8-1616154-3](#) [MIS-019-01-F-D](#) [589159005002045](#) [541371078](#) [IL-WX-10PB-HF-B-E1000E](#) [FCN-268M024-G/3D](#) [20021832-06016C1LF](#) [KX15-20KLDL-E1000E](#) [MDF7-16DP-2.54DSA\(55\)](#) [AXE810124](#) [FCN-214J100-G/0](#) [FCN-230C068-E/S](#) [AXE812124](#)