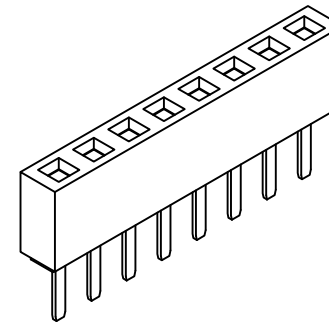
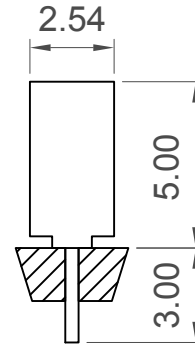
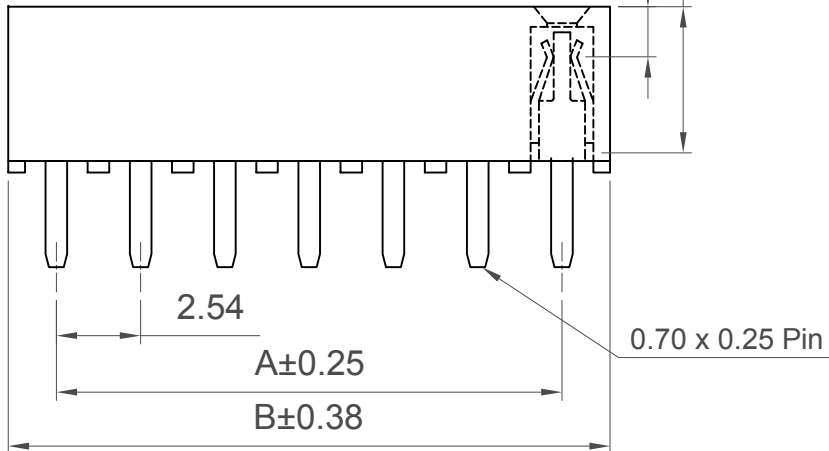


Recommended PCB Layout



Minimum Insertion Depth  
1.45 Ref.

Maximum Insertion Depth  
4.40 ref.



Specifications

Material

Insulator:  
Standard: Polyamide, Nylon 6T, UL94V-0  
Options: Polymer, LCP, UL94V-0  
Polyester, PBT, UL94V-0  
Contact: Phosphor Bronze

Plating

See Ordering Grid

Electrical

Current Rating: 3 Amp Per Pin  
Contact Resistance: 20 mΩ max.  
Insulation Resistance: 1000 MΩ min.  
Dielectric Withstand Voltage: 600 V AC

Mechanical & Environmental

Operating Temperature: -40°C to +105°C

Soldering Process

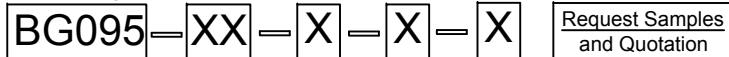
Nylon 6T (Standard)  
IR Reflow: 260°C for 10 sec.  
Wave: 230°C for 5-10 sec.  
Manual Solder: 350°C for 3-5sec  
LCP (Option)  
IR Reflow: 260°C for 10 sec.  
Wave: 250°C for 5-10 sec  
Manual Solder: 350°C for 3-5 sec  
PBT (Option)  
Manual Solder: 330°C for 3-5 sec.  
(Not suitable for hi-temp process)

Mates with (Subject to Pin Length)

BG020 BG030 BG031 BG035  
BG055 BG060 BG075 BG080

Number of Contacts	Dimensions	
	A	B
2	2.54	5.58
3	5.08	8.12
4	7.62	10.66
5	10.16	13.20
6	12.70	15.74
7	15.24	18.28
8	17.78	20.82
9	20.32	23.36
10	22.86	25.90
11	25.40	28.44
12	27.94	30.98
13	30.48	33.52
14	33.02	36.06
15	35.56	38.60
16	38.10	41.14
17	40.64	43.68
18	43.18	46.22
19	45.72	48.76
20	48.26	51.30
21	50.80	53.84
22	53.34	56.38
23	55.88	58.92
24	58.42	61.46
25	60.96	64.00
26	63.50	66.54
27	66.04	69.08
28	68.58	71.62
29	71.12	74.16
30	73.66	76.70
31	76.20	79.24
32	78.74	81.78
33	81.28	84.32
34	83.82	86.86
35	86.36	89.40
36	88.90	91.94
37	91.44	94.48
38	93.98	97.02
39	96.52	99.56
40	99.06	102.10

Ordering Grid



No. of Contacts  
02 to 40

Packing Options

D = Tube (Standard)  
E = Tube with Cap  
F = Tube with Film  
G = Plastic Box

Insulator Material

N = Nylon 6T (Standard)  
P = PBT  
L = LCP

Contact Plating

A = Gold Flash All Over (Standard)  
B = Selective Gold Flash Contact Area/Tin On Tail  
C = Tin All Over  
G = 10μ" Gold Contact Area/Tin On Tail  
I = 30μ" Gold Contact Area/Tin On Tail

Part Number BG095		Product Description 2.54mm Pitch Socket, Single Row, Through-Hole, Vertical, Dual Beam Folded Contact	
Drawing Date 28th December 2007			
By	CC	Tolerances (Except as Noted)	Units:
Detail	BG095 E PCN	Length X. ± 0.30 X.X ± 0.20 X.XX ± 0.15 X.XXX ± 0.10	Metric (mm)
Revision	E3	Angle X° ± 5° X.X° ± 2° X.XX° ± 1° X.XXX° ± 0.5°	3rd Angle Projection
Date	16/11/17		



This drawing is confidential and copyright of Global Connector Technology, Ltd (GCT). This drawing must not be copied or disclosed without written consent. E & OE



Not to Scale  
Drawn By ASS  
Sheet No. 1/1

## X-ON Electronics

Largest Supplier of Electrical and Electronic Components

*Click to view similar products for [Board to Board & Mezzanine Connectors](#) category:*

*Click to view products by [GCT](#) manufacturer:*

Other Similar products are found below :

[589158040000018](#) [MDF7C-18P-2.54DSA\(55\)](#) [FCN-230C068-11](#) [FCN-268F012-G/BD](#) [FCN-268F036-G/BD](#) [FCN-268M012-G/0D](#) [FCN-268M024-G/1D](#) [FCN-723J004/1](#) [MIS-048-01-F-D-DP-K](#) [832-10-034-10-001000](#) [FX4C-80S-1.27DSA](#) [FCN-214Q030-G/0](#) [FCN-234P048-G/0](#) [FCN-235D050-G/C](#) [210-93-314-41-105000](#) [2-22603-0](#) [MDF7-40DP-2.54DSA\(55\)](#) [AXG720047](#) [5031084030](#) [MIT-114-03-F-D-K](#) [55323-1519](#) [DF33-2P-3.3DSA\(24\)](#) [YFT-20-05-H-03-SB-K](#) [503308-3040](#) [026-6203-PDB](#) [027-6203-PDB](#) [069159702701000](#) [10123981-102LF](#) [101A10019X](#) [55650-0588-C](#) [68684-306](#) [75140-7012](#) [589159005003045](#) [194261-1](#) [FCN-268F024-G0D](#) [10124054-515LF](#) [68685-603](#) [8-1616154-3](#) [MIS-019-01-F-D](#) [589159005002045](#) [541371078](#) [IL-WX-10PB-HF-B-E1000E](#) [FCN-268M024-G/3D](#) [20021832-06016C1LF](#) [KX15-20KLDL-E1000E](#) [MDF7-16DP-2.54DSA\(55\)](#) [AXE810124](#) [FCN-214J100-G/0](#) [FCN-230C068-E/S](#) [AXE812124](#)