

Recommended PCB Layout
General Tolerance: ±0.05

Specifications

Material

Insulator: Polymer, LCP, Natural, UL94V-0
 Contact: Copper Alloy

Plating

Underplating: 30µ"-50µ" Nickel all over
 Contact Area: See ordering grid

Electrical

Current Rating: 3A per pin
 Contact Resistance: 20 mΩ max.
 Insulating Resistance: 1000 MΩ min.
 Dielectric Withstand Voltage: 500V AC

Mechanical & Environmental

Operating Temperature: -40°C to +105°C

Soldering Process:

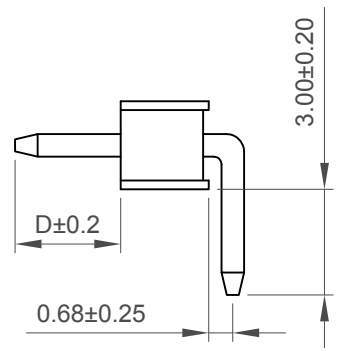
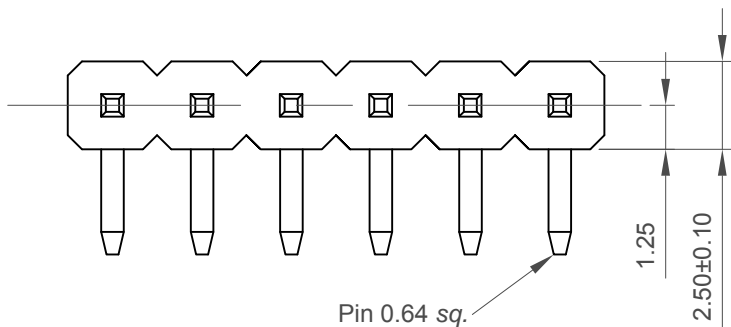
Wave: 250°C for 5-10 secs
 Manual Solder: 350°C for 3-5 secs

Mates with

(Subject to pin length):
 Use BG302 for perfect horizontal mating.
 (Standard mating pin length 3.00mm)

Notes:

Standard black version of BG303 is BG075



Ordering Grid
BG303 - **XX** - **X** - **0300** - **L** - **X** Request Samples and Quotation

No. of Contacts
 02 to 06
 Contact Plating
 A = Gold Flash All Over
 (Other plating options available on request)

Packing Options
G = Plastic Box (Standard)
 D = Tube
 Insulator Material
 L = LCP (Natural)

Dimension D (Post Length)
0300 = 3.00mm (Standard)
 Or Specify Dimension D
 eg 0250 = 2.50mm
 (Maximum 3200=32.00mm)
 (Minimum 0100=1.00mm)

CONTACTS	DIMENSIONS	
	A	B
2	5.08	2.54
3	7.62	5.08
4	10.16	7.62
5	12.70	10.16
6	15.24	12.70

Part Number		Product Description	
BG303		2.54mm Pitch Pin Header, Single Row, Through-hole, Horizontal, Natural LCP	
Drawing Date		7th December 2011	
By	CC	Tolerances (Except as Noted)	Units:
Detail	Drawing Release	Length	Metric (mm)
Revision	A2	Angle	
Date	01/11/17	X.X ± 0.30	
		X.XX ± 0.20	



This drawing is confidential and copyright of Global Connector Technology, Ltd (GCT). This drawing must not be copied or disclosed without written consent. E & OE



Not to Scale	Drawn By CM	Sheet No. 1/1
--------------	-------------	---------------

X-ON Electronics

Largest Supplier of Electrical and Electronic Components

Click to view similar products for [Board to Board & Mezzanine Connectors](#) category:

Click to view products by [GCT](#) manufacturer:

Other Similar products are found below :

[589158040000018](#) [MDF7C-18P-2.54DSA\(55\)](#) [FCN-230C068-11](#) [FCN-268F012-G/BD](#) [FCN-268F036-G/BD](#) [FCN-268M012-G/0D](#) [FCN-268M024-G/1D](#) [FCN-723J004/1](#) [MIS-048-01-F-D-DP-K](#) [832-10-034-10-001000](#) [FX4C-80S-1.27DSA](#) [FCN-214Q030-G/0](#) [FCN-234P048-G/0](#) [FCN-235D050-G/C](#) [210-93-314-41-105000](#) [2-22603-0](#) [MDF7-40DP-2.54DSA\(55\)](#) [AXG720047](#) [5031084030](#) [MIT-114-03-F-D-K](#) [55323-1519](#) [DF33-2P-3.3DSA\(24\)](#) [YFT-20-05-H-03-SB-K](#) [503308-3040](#) [026-6203-PDB](#) [027-6203-PDB](#) [069159702701000](#) [10123981-102LF](#) [101A10019X](#) [55650-0588-C](#) [68682-310LF](#) [68684-306](#) [75140-7012](#) [87471-650](#) [YTW-30-07-H-Q-410-140](#) [194261-1](#) [FCN-268F024-G0D](#) [10124054-515LF](#) [68685-603](#) [8-1616154-3](#) [MIS-019-01-F-D](#) [FCN-268M024-G/3D](#) [20021832-06016C1LF](#) [KX15-20KLDL-E1000E](#) [MDF7-16DP-2.54DSA\(55\)](#) [AXE810124](#) [FCN-214J100-G/0](#) [FCN-230C068-E/S](#) [AXE812124](#) [AXE816124](#)