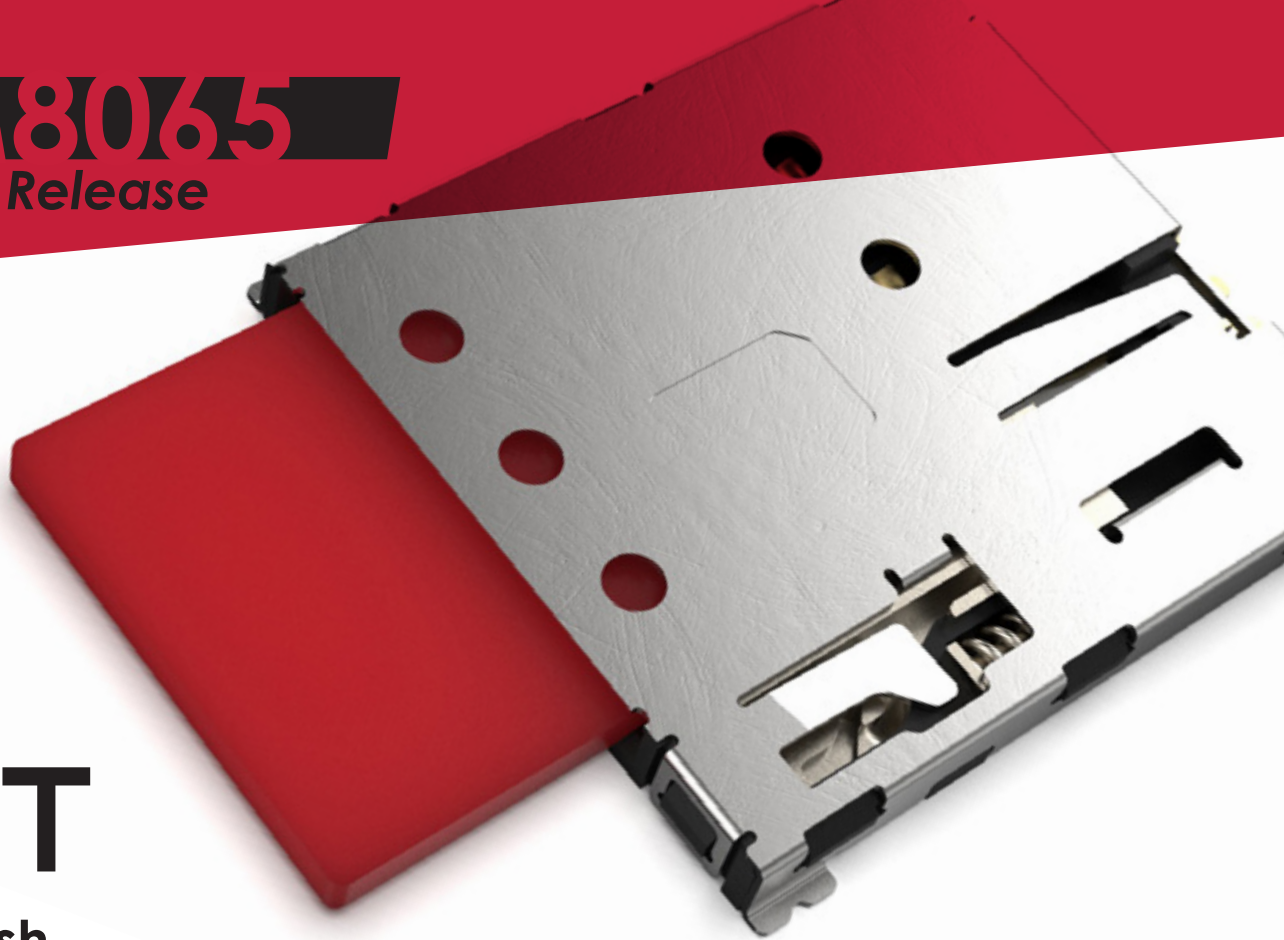


# SIM8065

Product Release



## GCT

Push-Push  
Nano SIM Card Connector

[www.gct.co](http://www.gct.co)

# Vital Stats

SIM8065 is the first push-push Nano SIM card connector from GCT, combining the tiny form factor of the Nano SIM format with strong card retention and ease of access afforded by the spring-loaded card eject mechanism.

SIM Card Type

**Nano**

Card Eject Mechanism

**Push-Push**

Operating Temp.

**-40 to +85°C**

Mating Cycles

**5,000**

Card Detect Switch

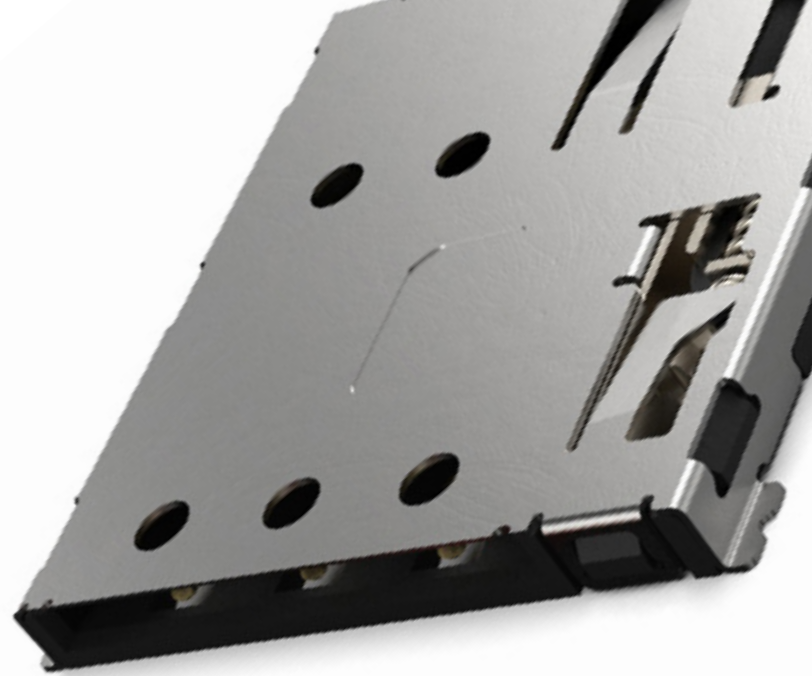
**Yes**

Shell

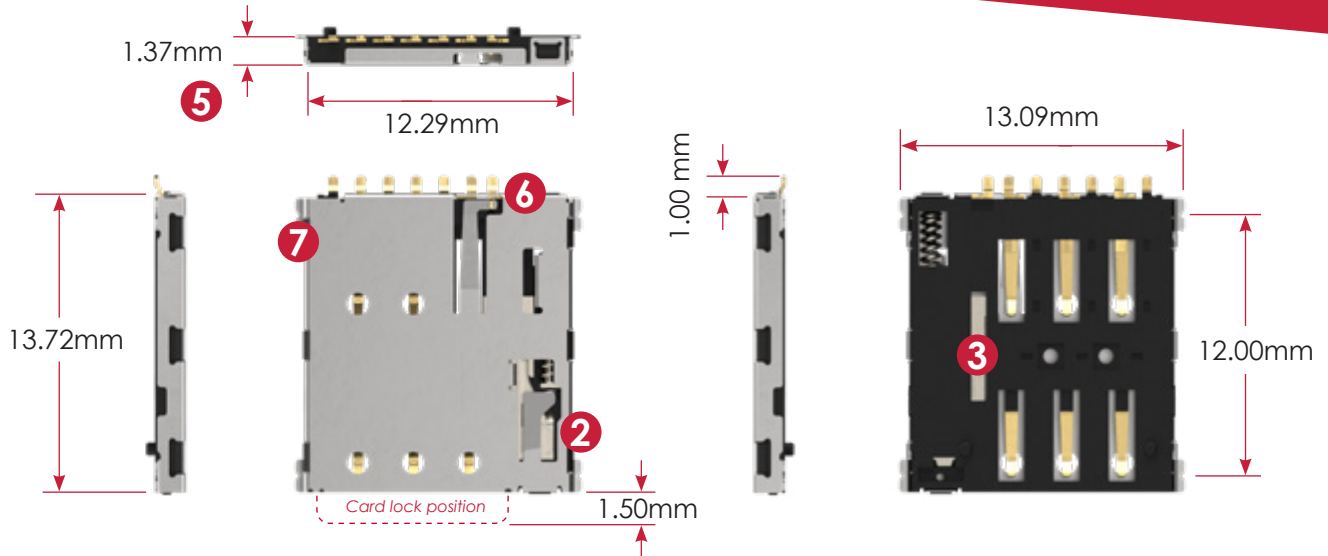
**Stainless Steel**

With a shell solder tab on each corner and dual plastic locating pegs, SIM8065 is rock solid when mounted to the PCB, allowing a rating of 5,000 mating cycles.

- Gold plated contacts.
- Supplied in tape & reel packaging (1500 pieces per reel)



# Plan View



- 1 Nano SIM card interface
- 2 Push-Push card eject mechanism
- 3 6 gold plated contacts
- 4 Dual plastic locating pegs
- 5 Tiny profile of just 1.37mm above PCB
- 6 Card Detect switch
- 7 Polarised card stop

[gct.co/connector/sim8065](https://gct.co/connector/sim8065)

# Nano SIM Range



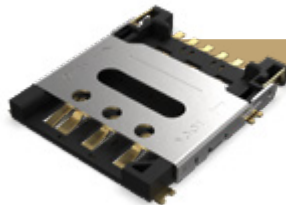
## SIM8051

- Push-Pull Nano SIM card connector
- 6 contacts without card detect switch
- Outer shell tabs, shell stake & optional locating peg
- 1.35mm profile from PCB



## SIM8055

- Push-Pull Nano SIM card connector
- Innovative split contact card detection switch
- Outer shell tabs, shell stake & optional locating peg
- 1.35mm profile from PCB



## SIM8060

- Hinge & lock Nano SIM card connector
- Optional split contact card detection switch
- Outer shell tabs & polarised card stop
- 1.43mm profile from PCB

[gct.co/sim-connector/nano-sim-connector](https://gct.co/sim-connector/nano-sim-connector)

**GCT**

## X-ON Electronics

Largest Supplier of Electrical and Electronic Components

*Click to view similar products for [Memory Card Connectors](#) category:*

*Click to view products by [GCT](#) manufacturer:*

Other Similar products are found below :

[6407-249V-25273P](#) [6407-249V-25343P](#) [6426-201-21343](#) [69.920.0553.0](#) [MCR60A-98D-2.54DSA\(70\)](#) [809180410000000](#) [DM3AT-SF-PEJM5\(41\)](#) [IC11S-BUR-PNEJL\(71\)](#) [C70210M0083692](#) [2041353-2](#) [308-DS1P0811-192](#) [HM2P09PDR360N9LF](#) [10014744-011TLF](#) [11327-001](#) [11327-002](#) [NX1-32T-KT3K\(05\)](#) [95622-003LF](#) [84648-056HLF](#) [CCM03-3109 B LFT](#) [MS3116J10-6PW](#) [2309923-1](#) [61126-050CAHLF](#) [GTFP08432B1HR](#) [G85D1160022HHR](#) [SCE2MSDB76A121SN](#) [SCE2MSDZN76A121SN](#) [10014744-011ALF](#) [10014744-011LF](#) [10057542-1211FLF](#) [10067972-000LF](#) [10067972-050LF](#) [10122302-20110LF](#) [G85D1162022HHR](#) [TF-05A](#) [XKNANO-1412](#) [SMN-304-ARP6](#) [MIS11-S1F1-2000-A](#) [SMN-308-ARSP7](#) [MCS-302S-KT1B](#) [SMN-308-ACSP7](#) [K-DYX-008](#) [K-DYX-004](#) [HYCW126-TF18-150B](#) [C7024-03](#) [SMO-1030](#) [MCS-110-KT](#) [SIM-217](#) [SNO-1355-KT](#) [SMO-1025-P10](#) [SIM-211S-P6](#)