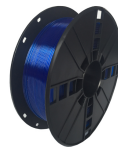
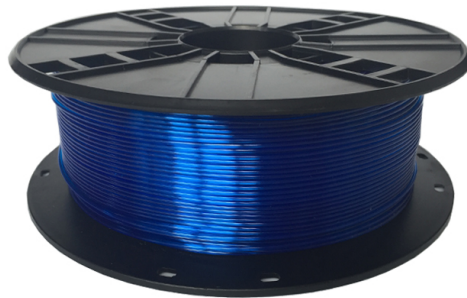


3DP-PETG1.75-01-B

**Filament, PETG Blue, 1.75 mm , 1 kg****VERSATILE & EASY TO USE**

- Polyethylene terephthalate (PETG) is an amorphous thermoplastic of the polyester family
- Perfect combination of clarity and strength. The clarity of PETG approaches that of Acrylic and impact resistance is close to Polycarbonate
- Easy to print with a variety of 3D printers

**Features**

- Very high strength filament
- Impact Resistant PETG is less brittle than acrylic, and is a lower cost alternative to polycarbonate.
- Chemical Resistant offers superior chemical resistance when compared with many other transparent plastics.
- Environmental friendly as it is considered 100% recyclable
- Very low shrinkage makes printing large flat surfaces a breeze
- Easily printed on any acrylic, glass, Kapton and other printing platform

**Packaging**

Q'ty in crtn, pcs	8
Crtn volume, CUM	0.034
Crtn weight, kgs	11.3
Individual package size LxWxH:	210x210x90 mm
Carton size LxWxH:	430x430x185 mm
Country of origin	CN
Barcode	8716309090803
Customs code	3916909000

**Specifications**

Material: PETG, 1.75 mm diameter  
Weight: 1 kg/spool (2.2 lbs)  
Density at 240°C: 1.27 g/cm<sup>3</sup>  
Melt Flow Index at g/10min, 200°C/ 5kg: 20  
Melt Point: 220 260 °C  
Heat-Deflection-Temperature at 0.455 MPa: 60 80 °C  
Yield Strength at 5mm/min: 50 MPa  
Impact Strength: 8.7 KJ/m<sup>2</sup>  
Elongation at Break: 120 %  
Diameter: 1.75 ± 0.05 mm

**System requirements**

A 3D printer with 1.75 mm extruder of temperature around 240 °C, suitable for PETG filament

**Certificates**

## X-ON Electronics

Largest Supplier of Electrical and Electronic Components

*Click to view similar products for [3D Printers and Accessories](#) category:*

*Click to view products by [Gembird](#) manufacturer:*

Other Similar products are found below :

[3DP-PLA-01-MTNB](#) [3DP-PLA1.75-01-P](#) [3DP-PLA1.75-01-GB](#) [3DP-PLA+1.75-02-W](#) [3DP-PETG1.75-01-R](#) [PLA 1,75 RACE GREEN](#) [3DP-PLA1.75-01-G](#) [3DP-HIPS1.75-01-R](#) [PETG 1,75 DARK STEEL](#) [3DP-ABS1.75-01-FY](#) [3DP-PLA1.75-01-Y](#) [3DP-TPE1.75-01-Y](#) [PETG 1,75 DARK STEEL SOLO 0,33](#) [3DP-PLA-01-MTBK](#) [3DP-PLA1.75-01-BR](#) [3DP-ABS1.75-01-G](#) [3DP-ABS1.75-01-FG](#) [3DP-PLA1.75GE-01-W](#) [3DP-ABS1.75-01-GR](#) [3DP-PLA+1.75-02-BK](#) [3DP-PLA+1.75-02-G](#) [3DP-PETG1.75-01-G](#) [3DP-PETG1.75-01-BK](#) [3DP-PETG1.75-01-GR](#) [3DP-PLA+1.75-02-Y](#) [3DP-PLA1.75-02-CARBON](#) [3DP-PVA-01-NAT](#) [PLA 1,75 FULL METALLIC](#) [3DP-PLA-01-MTO](#) [3DP-ABS1.75-01-S](#) [ASA 1,75 DARK GRAY](#) [3DP-PLA1.75-01-FR](#) [3DP-ABS1.75-01-BK](#) [3DP-PLA1.75-01-B](#) [3DP-ABS1.75-01-W](#) [PETG 1,75 LIGHT STEEL SOLO 0,33](#) [3DP-PLA1.75-01-W](#) [3DP-PETG1.75-01-Y](#) [3DP-PLA1.75-01-R](#) [3DP-PLA+1.75-02-O](#) [3DP-PLA-01-MTSG](#) [3DP-PLA-FL-01-BK](#) [3DP-PLA1.75GE-01-R](#) [3DP-PLA1.75-02-MAR](#) [3DP-PLA1.75-01-BK](#) [3DP-PETG1.75-01-B](#) [3DP-PLA1.75-01-NAT](#) [3DP-PLA-01-MTP](#) [3DP-PLA1.75-01-BS](#) [3DP-PLA+1.75-02-B](#)