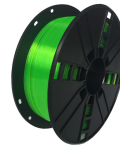
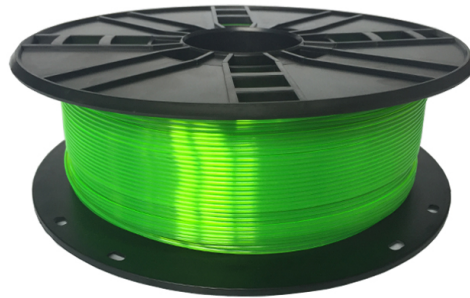


3DP-PETG1.75-01-G

Filament, PETG Green, 1.75 mm, 1 kg

VERSATILE & EASY TO USE

- Polyethylene terephthalate (PETG) is an amorphous thermoplastic of the polyester family
- Perfect combination of clarity and strength. The clarity of PETG approaches that of Acrylic and impact resistance is close to Polycarbonate
- Easy to print with a variety of 3D printers



Features

- Very high strength filament
- Impact Resistant PETG is less brittle than acrylic, and is a lower cost alternative to polycarbonate.
- Chemical Resistant offers superior chemical resistance when compared with many other transparent plastics.
- Environmental friendly as it is considered 100% recyclable
- Very low shrinkage makes printing large flat surfaces a breeze
- Easily printed on any acrylic, glass, Kapton and other printing platform

Packaging

Q'ty in crtn, pcs	8
Crtn volume, CUM	0.034
Crtn weight, kgs	11.22
Individual package size LxWxH:	210x210x90 mm
Carton size LxWxH:	430x430x185 mm
Country of origin	CN
Barcode	8716309090834
Customs code	3916909000

Specifications

Material: PETG, 1.75 mm diameter
Weight: 1 kg/spool (2.2 lbs)
Density at 240°C: 1.27 g/cm³
Melt Flow Index at g/10min, 200°C/ 5kg: 20
Melt Point: 220 260 °C
Heat-Deflection-Temperature at 0.455 MPa: 60 80 °C
Yield Strength at 5mm/min: 50 MPa
Impact Strength: 8.7 KJ/m²
Elongation at Break: 120 %
Diameter: 1.75 ± 0.05 mm

System requirements

A 3D printer with 1.75 mm extruder of temperature around 240 °C, suitable for PETG filament

Certificates



X-ON Electronics

Largest Supplier of Electrical and Electronic Components

Click to view similar products for [3D Printers and Accessories](#) category:

Click to view products by [Gembird](#) manufacturer:

Other Similar products are found below :

[3DP-PLA-01-MTNB](#) [3DP-PLA1.75-01-P](#) [3DP-PLA1.75-01-GB](#) [3DP-PLA+1.75-02-W](#) [3DP-PETG1.75-01-R](#) [PLA 1,75 RACE GREEN](#) [3DP-PLA1.75-01-G](#) [3DP-HIPS1.75-01-R](#) [PETG 1,75 DARK STEEL](#) [3DP-ABS1.75-01-FY](#) [3DP-PLA1.75-01-Y](#) [3DP-TPE1.75-01-Y](#) [PETG 1,75 DARK STEEL SOLO 0,33](#) [3DP-PLA-01-MTBK](#) [3DP-PLA1.75-01-BR](#) [3DP-ABS1.75-01-G](#) [3DP-ABS1.75-01-FG](#) [3DP-PLA1.75GE-01-W](#) [3DP-ABS1.75-01-GR](#) [3DP-PLA+1.75-02-BK](#) [3DP-PLA+1.75-02-G](#) [3DP-PETG1.75-01-G](#) [3DP-PETG1.75-01-BK](#) [3DP-PETG1.75-01-GR](#) [3DP-PLA+1.75-02-Y](#) [3DP-PLA1.75-02-CARBON](#) [3DP-PVA-01-NAT](#) [PLA 1,75 FULL METALLIC](#) [3DP-PLA-01-MTO](#) [3DP-ABS1.75-01-S](#) [ASA 1,75 DARK GRAY](#) [3DP-PLA1.75-01-FR](#) [3DP-ABS1.75-01-BK](#) [3DP-PLA1.75-01-B](#) [3DP-ABS1.75-01-W](#) [PETG 1,75 LIGHT STEEL SOLO 0,33](#) [3DP-PLA1.75-01-W](#) [3DP-PETG1.75-01-Y](#) [3DP-PLA1.75-01-R](#) [3DP-PLA+1.75-02-O](#) [3DP-PLA-01-MTSG](#) [3DP-PLA-FL-01-BK](#) [3DP-PLA1.75GE-01-R](#) [3DP-PLA1.75-02-MAR](#) [3DP-PLA1.75-01-BK](#) [3DP-PETG1.75-01-B](#) [3DP-PLA1.75-01-NAT](#) [3DP-PLA-01-MTP](#) [3DP-PLA1.75-01-BS](#) [3DP-PLA+1.75-02-B](#)