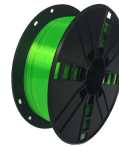
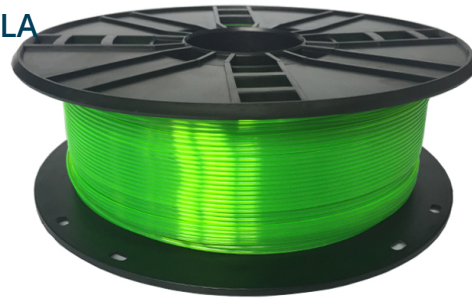


3DP-PLA+1.75-02-G

**PLA-PLUS filament, green, 1.75 mm, 1 kg****MUCH BETTER HARDNESS THAN NORMAL PLA**

- THE HARDNESS IS PRACTICALLY EQUAL TO ABS
- ENVIRONMENTALLY FRIENDLY AND WITHOUT THE SMELL OF ABS
- VERSATILE & EASY TO USE
- PLA (polylactide) is a biodegradable thermoplastic polyester, which is easy to print for variety 3D printers.
- It has no odor, a lower melting point and good flowbility, no need to post-treatment.
- PLA-plus plastic variant has a bit higher hardness and toughness than regular PLA, and is more environmental friendly, also it is not so easy warped while printing.

**Features**

- High precision roundness enables higher printing quality
- No bubbles, vivid colors
- Can be applied to a variety of 3D printers

**Packaging**

Q'ty in crtn, pcs	8
Crtn volume, CUM	0.036
Crtn weight, kgs	10.74
Individual package size LxWxH:	210x85x210 mm
Carton size LxWxH:	445x445x180 mm
Country of origin	CN
Barcode	8716309103671
Customs code	3916909000

**Specifications**

Material: PLA+, 1.75 mm diameter  
Weight: 1 kg/spool (2.2 lbs)  
Length: approx. 330 m  
Density at 21.5 °C: 1.25 g/cm<sup>3</sup>  
Melt Flow Index at g / 10 min 190 °C / 5 kg: 5  
Melt Point: 195 °C 235 °C  
Heat-Deflection-Temperature: 47 °C  
Yield Strength at 5 mm / min: 72 MPa  
Impact Strength: 12 KJ/m  
Ensil Break: 30 %  
Diameter: 1.75 mm ± 0.05 mm

**System requirements**

A 3D printer with 1.75 mm extruder of temperature around 200 °C, suitable for PLA filament

**Certificates**

## X-ON Electronics

Largest Supplier of Electrical and Electronic Components

*Click to view similar products for [3D Printers and Accessories](#) category:*

*Click to view products by [Gembird](#) manufacturer:*

Other Similar products are found below :

[3DP-PLA-01-MTNB](#) [3DP-PLA1.75-01-P](#) [3DP-PLA1.75-01-GB](#) [3DP-PLA+1.75-02-W](#) [3DP-PETG1.75-01-R](#) [PLA 1,75 RACE GREEN](#) [3DP-PLA1.75-01-G](#) [3DP-HIPS1.75-01-R](#) [PETG 1,75 DARK STEEL](#) [3DP-ABS1.75-01-FY](#) [3DP-PLA1.75-01-Y](#) [3DP-TPE1.75-01-Y](#) [PETG 1,75 DARK STEEL SOLO 0,33](#) [3DP-PLA-01-MTBK](#) [3DP-PLA1.75-01-BR](#) [3DP-ABS1.75-01-G](#) [3DP-ABS1.75-01-FG](#) [3DP-PLA1.75GE-01-W](#) [3DP-ABS1.75-01-GR](#) [3DP-PLA+1.75-02-BK](#) [3DP-PLA+1.75-02-G](#) [3DP-PETG1.75-01-G](#) [3DP-PETG1.75-01-BK](#) [3DP-PETG1.75-01-GR](#) [3DP-PLA+1.75-02-Y](#) [3DP-PLA1.75-02-CARBON](#) [3DP-PVA-01-NAT](#) [PLA 1,75 FULL METALLIC](#) [3DP-PLA-01-MTO](#) [3DP-ABS1.75-01-S](#) [ASA 1,75 DARK GRAY](#) [3DP-PLA1.75-01-FR](#) [3DP-ABS1.75-01-BK](#) [3DP-PLA1.75-01-B](#) [3DP-ABS1.75-01-W](#) [PETG 1,75 LIGHT STEEL SOLO 0,33](#) [3DP-PLA1.75-01-W](#) [3DP-PETG1.75-01-Y](#) [3DP-PLA1.75-01-R](#) [3DP-PLA+1.75-02-O](#) [3DP-PLA-01-MTSG](#) [3DP-PLA-FL-01-BK](#) [3DP-PLA1.75GE-01-R](#) [3DP-PLA1.75-02-MAR](#) [3DP-PLA1.75-01-BK](#) [3DP-PETG1.75-01-B](#) [3DP-PLA1.75-01-NAT](#) [3DP-PLA-01-MTP](#) [3DP-PLA1.75-01-BS](#) [3DP-PLA+1.75-02-B](#)