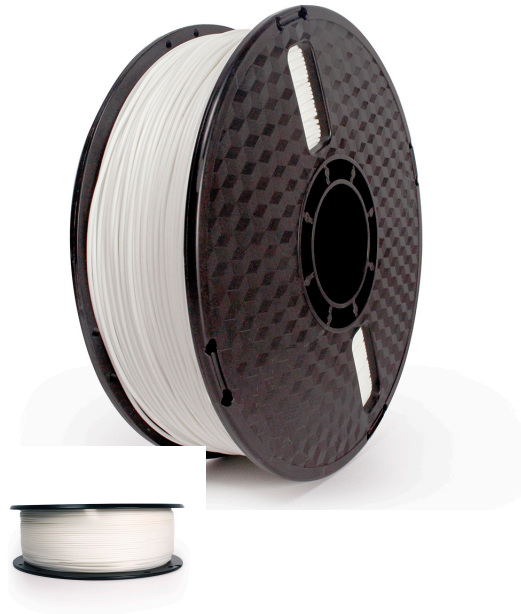


3DP-PVA-01-NAT

Filament, PVA natural (water soluble filament), 1.75 mm, 1 kg

VERSATILE & EASY TO USE

Features

- High precision roundness enables higher printing quality
- Soluble in 50-60 °C degree water
- Can be applied to a variety of 3D printers

Specifications

Material: PVA, 1.75 mm diameter
Weight: 1 kg/spool (2.2 lbs)
Length: approx. 345 m
Melt Point: 168 °C
Diameter: 1.75 ± 0.05 mm

Packaging

Q'ty in crtn, pcs	8
Crtn volume, CUM	0.035
Crtn weight, kgs	12.02
Individual package size LxWxH:	208x208x83 mm
Carton size LxWxH:	350x430x230 mm
Country of origin	CN
Barcode	8716309124041
Customs code	3916909000

System requirements

A 3D printer with 1.75 mm extruder of temperature around 220 °C

Certificates



X-ON Electronics

Largest Supplier of Electrical and Electronic Components

Click to view similar products for [3D Printers and Accessories](#) category:

Click to view products by [Gembird](#) manufacturer:

Other Similar products are found below :

[3DP-PLA-01-MTNB](#) [3DP-PLA1.75-01-P](#) [3DP-PLA1.75-01-GB](#) [3DP-PLA+1.75-02-W](#) [3DP-PETG1.75-01-R](#) [PLA 1,75 RACE GREEN](#) [3DP-PLA1.75-01-G](#) [3DP-HIPS1.75-01-R](#) [PETG 1,75 DARK STEEL](#) [3DP-ABS1.75-01-FY](#) [3DP-PLA1.75-01-Y](#) [3DP-TPE1.75-01-Y](#) [PETG 1,75 DARK STEEL SOLO 0,33](#) [3DP-PLA-01-MTBK](#) [3DP-PLA1.75-01-BR](#) [3DP-ABS1.75-01-G](#) [3DP-ABS1.75-01-FG](#) [3DP-PLA1.75GE-01-W](#) [3DP-ABS1.75-01-GR](#) [3DP-PLA+1.75-02-BK](#) [3DP-PLA+1.75-02-G](#) [3DP-PETG1.75-01-G](#) [3DP-PETG1.75-01-BK](#) [3DP-PETG1.75-01-GR](#) [3DP-PLA+1.75-02-Y](#) [3DP-PLA1.75-02-CARBON](#) [3DP-PVA-01-NAT](#) [PLA 1,75 FULL METALLIC](#) [3DP-PLA-01-MTO](#) [3DP-ABS1.75-01-S](#) [ASA 1,75 DARK GRAY](#) [3DP-PLA1.75-01-FR](#) [3DP-ABS1.75-01-BK](#) [3DP-PLA1.75-01-B](#) [3DP-ABS1.75-01-W](#) [PETG 1,75 LIGHT STEEL SOLO 0,33](#) [3DP-PLA1.75-01-W](#) [3DP-PETG1.75-01-Y](#) [3DP-PLA1.75-01-R](#) [3DP-PLA+1.75-02-O](#) [3DP-PLA-01-MTSG](#) [3DP-PLA-FL-01-BK](#) [3DP-PLA1.75GE-01-R](#) [3DP-PLA1.75-02-MAR](#) [3DP-PLA1.75-01-BK](#) [3DP-PETG1.75-01-B](#) [3DP-PLA1.75-01-NAT](#) [3DP-PLA-01-MTP](#) [3DP-PLA1.75-01-BS](#) [3DP-PLA+1.75-02-B](#)