

Single Phase Glass Passivated Silicon Bridge Rectifier

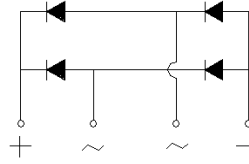
 $V_{RRM} = 50\text{ V} - 400\text{ V}$
 $I_O = 6\text{ A}$

Features

- Low forward voltage
- High surge overload rating
- Ideal for printed circuit boards
- High temperature soldering: 260°C/ 10 s
- Types from 50 V up to 400 V V_{RRM}
- Not ESD Sensitive

Applications

- Switching power supply
- Home appliances, office devices
- Industrial auto-equipments

BR-6 Package


Maximum ratings at $T_A = 25\text{ }^\circ\text{C}$, unless otherwise specified

| Parameter | Symbol | Conditions | BR605 | BR61 | BR62 | BR64 | Unit |
|---------------------------------|-----------|------------|------------|------------|------------|------------|------------------|
| Repetitive peak reverse voltage | V_{RRM} | | 50 | 100 | 200 | 400 | V |
| RMS reverse voltage | V_{RMS} | | 35 | 70 | 140 | 280 | V |
| DC blocking voltage | V_{DC} | | 50 | 100 | 200 | 400 | V |
| Operating temperature | T_j | | -40 to 150 | -40 to 150 | -40 to 150 | -40 to 150 | $^\circ\text{C}$ |
| Storage temperature | T_{stg} | | -40 to 150 | -40 to 150 | -40 to 150 | -40 to 150 | $^\circ\text{C}$ |

Electrical characteristics at $T_A = 25\text{ }^\circ\text{C}$, unless otherwise specified

Single phase, half sine wave, 50 Hz, resistive load

For capacitive load derate current by 20%

| Parameter | Symbol | Conditions | BR605 | BR61 | BR62 | BR64 | Unit |
|--|-----------------|--|-------|------|------|------|----------------------|
| Maximum forward rectified current | I_O | $T_A = 40\text{ }^\circ\text{C}$ | 6 | 6 | 6 | 6 | A |
| Peak forward surge current | I_{FSM} | $t_p = 8.3\text{ ms}$ | 150 | 150 | 150 | 150 | A |
| Maximum forward voltage drop | V_F | $I_F = 3.0\text{ A}$ | 1.05 | 1.05 | 1.05 | 1.05 | V |
| Maximum reverse current at rated DC blocking voltage | I_R | $T_A = 25\text{ }^\circ\text{C}$ | 10 | 10 | 10 | 10 | μA |
| | | $T_A = 125\text{ }^\circ\text{C}$ | 500 | 500 | 500 | 500 | |
| Rating for fusing | I^2t | $1\text{ ms} < t_p < 10\text{ ms}$, $T_j = 25\text{ }^\circ\text{C}$ | 93 | 93 | 93 | 93 | A^2s |
| Thermal resistance | $R_{\theta JA}$ | | 9 | 9 | 9 | 9 | $^\circ\text{C/W}$ |

Fig.1 Current Derating Curve

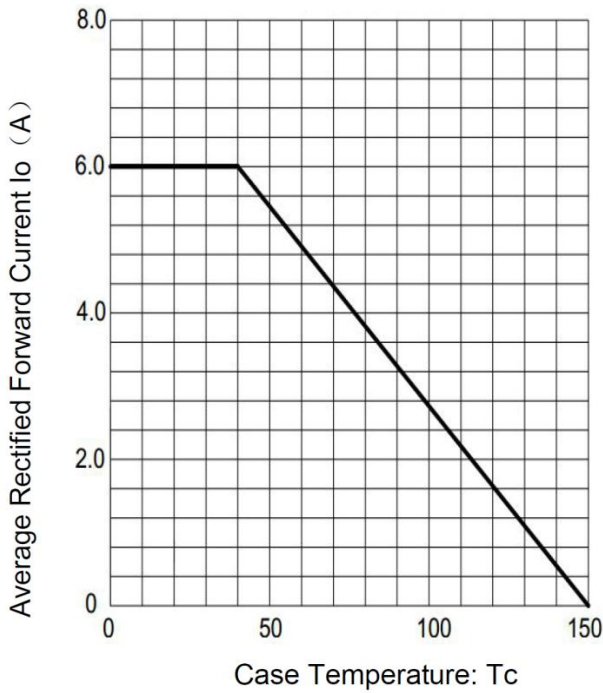


Fig.2 Typical Reverse Characteristics

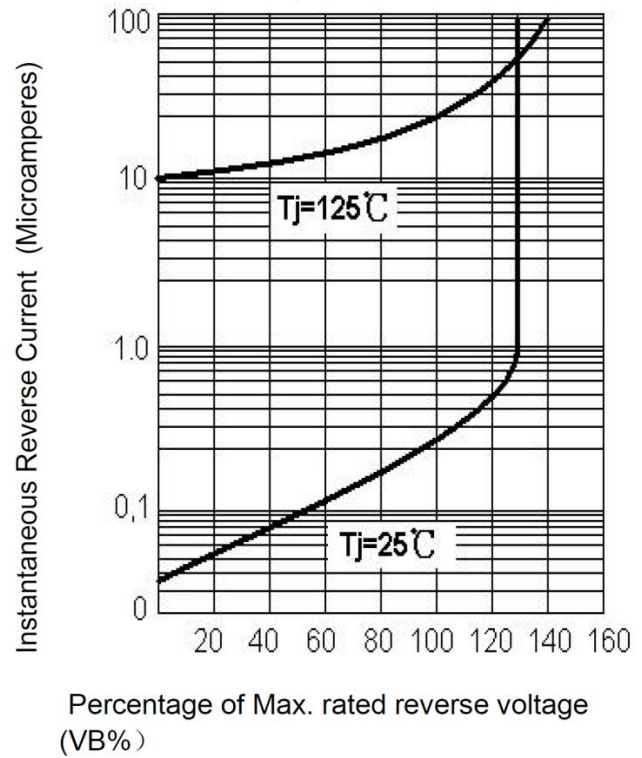


Fig.3 Max. Surge Current

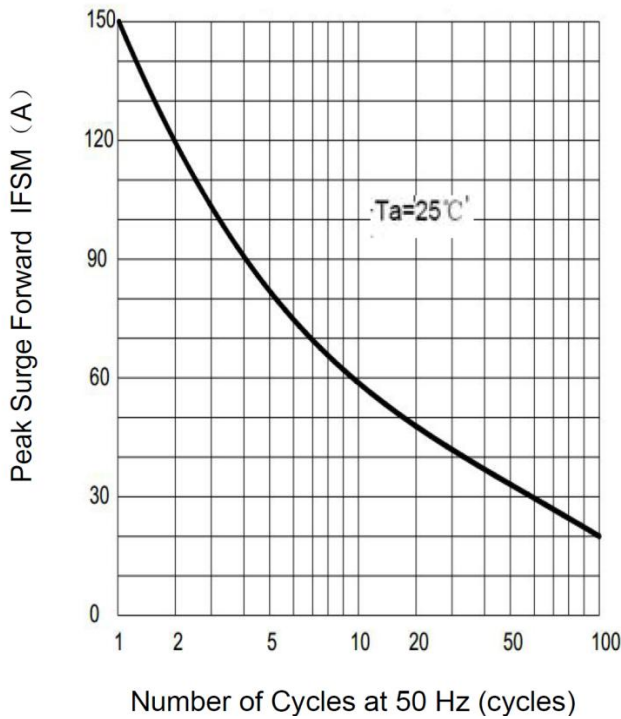
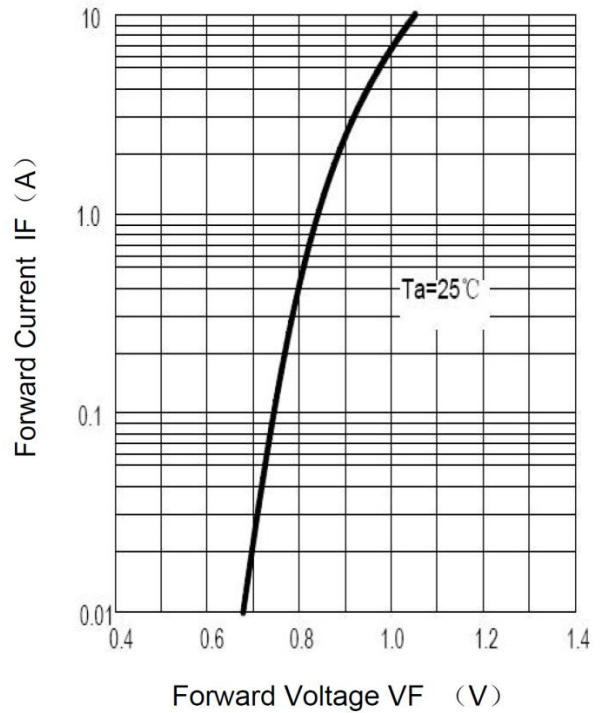


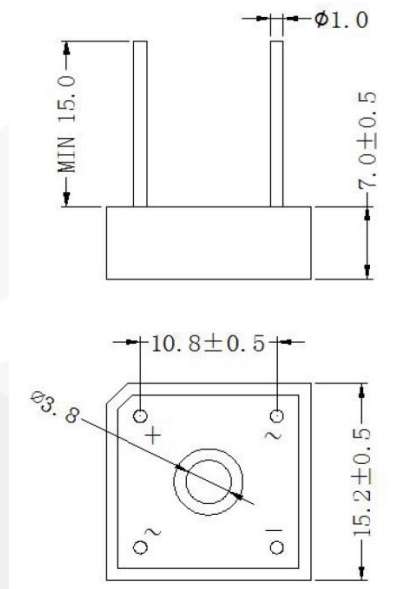
Fig.4 Rated Forward Features



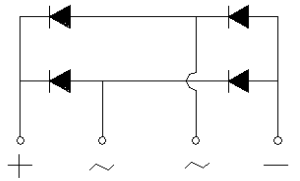
Package dimensions and terminal configuration

Product is marked with part number and terminal configuration.

BR-6



Dimensions in millimeters



X-ON Electronics

Largest Supplier of Electrical and Electronic Components

Click to view similar products for [Bridge Rectifiers](#) category:

Click to view products by [GeneSiC Semiconductor](#) manufacturer:

Other Similar products are found below :

[MB2510](#) [MB252](#) [MB356G](#) [MB358G](#) [GBJ1504-BP](#) [GBU15J-BP](#) [GBU15K-BP](#) [GBU4A-BP](#) [GBU6B-E3/45](#) [GSIB680-E3/45](#) [DB101-BP](#)
[DF01](#) [DF10SA-E345](#) [BU1508-E3/45](#) [KBPC50-10S](#) [RS405GL-BP](#) [G5SBA60-E3/51](#) [GBU10J-BP](#) [GBU6M](#) [GBU8D-BP](#) [GBU8J-BP](#)
[2KBB10](#) [36MB140A](#) [TB102M](#) [MB1510](#) [MB258](#) [MB6M-G](#) [MB86](#) [TL401G](#) [MDA920A2](#) [TU602](#) [TU810](#) [MP501W-BP](#) [MP502-BP](#)
[BR101-BP](#) [BR84DTP204](#) [BU2008-E3/51](#) [KBPC10/15/2501WP](#) [KBPC25-02](#) [DF06SA-E345](#) [DF1510S](#) [VS-40MT160PAPBF](#) [GBL02-E3/45](#)
[GBU4G-BP](#) [GBJ2506-BP](#) [GBU6B-E3/51](#) [GSIB15A80-E3/45](#) [DB104-BP](#) [TB354](#) [70MT160KPBF](#)