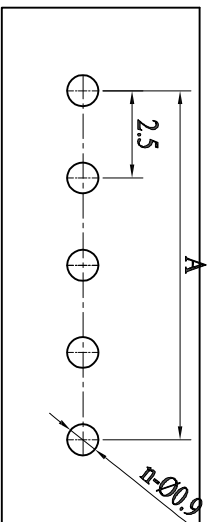
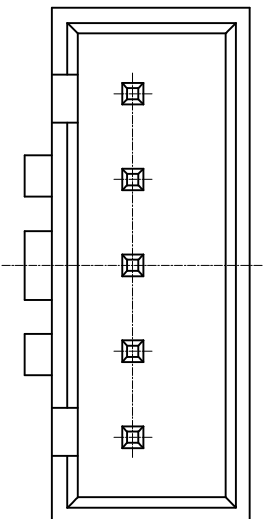
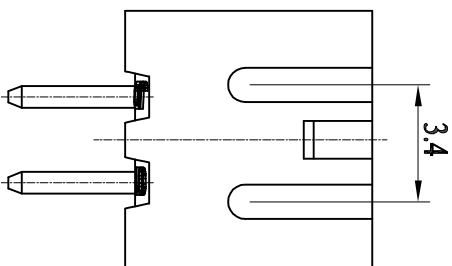
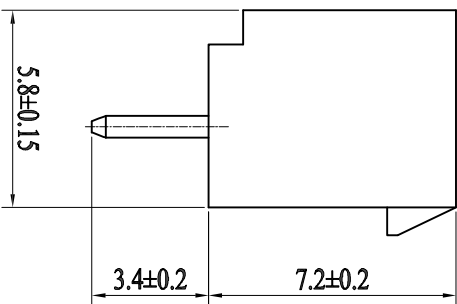
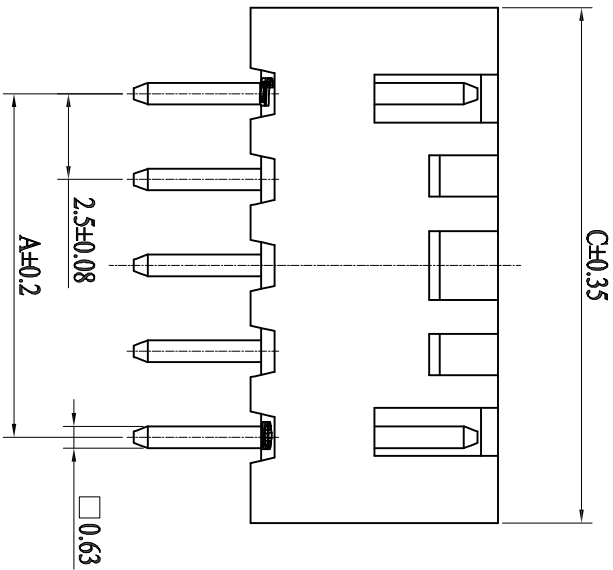


■ 技术参数 (SPECIFICATIONS)

- ◆ 额定电压: 250V AC/DC
- ◆ Voltage rating: 250V AC/DC
- ◆ 额定电流: 3.0A AC/DC MAX
- ◆ Current rating: 3.0A AC/DC MAX
- ◆ 耐压值: 1000V AC/minute
- ◆ Withstand voltage: 1000V AC/minute
- ◆ 绝缘电阻: 1000MΩ MIN
- ◆ Insulation resistance: 1000MΩ MIN
- ◆ 接触电阻: 0.02Ω MAX
- ◆ Contact resistance: 0.02Ω MAX
- ◆ 工作温度: -25°C ~ +85°C
- ◆ Working Temperature: -25°C ~ +85°C
- ◆ 间距: 2.5 mm
- ◆ Pitch: 2.5 mm

■ 材料 (MATERIAL)

- ◆ 外壳: 尼龙66
- ◆ Housing: PA66
- ◆ 插针: 黄铜
- ◆ Pin: Brass



POLES	PART NO	DIMENSIONS(mm)	
		A	B
2	2	2.5	7.5
3	3	5.0	10.0
4	4	7.5	12.5
5	5	10.0	15.0
6	6	12.5	17.5
7	7	15.0	20.0
8	8	17.5	22.5
9	9	20.0	25.0
10	10	22.5	27.5
11	11	25.0	30.0
12	12	27.5	32.5
13	13	30.0	35.0
14	14	32.5	37.5
15	15	35.0	40.0
16	16	37.5	42.5

APPROVALS		DATE	TITLE:							
DRAWN	ZHIWEI, CHEN	2015.07.07	GP01-2503W-NP							
CHECKED										
APPROVALS			PART NO.							
TOLERANCES ARE		30~0.15 10~0.30 5~0.10 ~5	±0.30 ±0.20 ±0.15 ±0.10	ANGLE ±2°						
ECN NO.	REV.	DATE.	DESCRIPTION.	CHANGE.	CHECK.	APPRO.	DRAWING NO.	SCALE: 1:1	PROJ.	SHEET 1 OF 1
	A		NEW							

**GEPU 歌普**

## X-ON Electronics

Largest Supplier of Electrical and Electronic Components

*Click to view similar products for [Headers & Wire Housings](#) category:*

*Click to view products by [GEPU](#) manufacturer:*

Other Similar products are found below :

[57102-F02-18ULF](#) [58102-G61-06LF](#) [0009485154](#) [009176003701906](#) [0050291907](#) [02.125.8002.8](#) [609-3404](#) [61062-3](#) [622-0430](#) [622-3653LF](#)  
[63453-116](#) [636-1030](#) [636-1427](#) [636-3427](#) [636-4007](#) [641938-9](#) [644827-2](#) [65495-038](#) [65692-001LF](#) [65781-018](#) [65781-047](#) [65817-010LF](#)  
[65817-015LF](#) [66207-023LF](#) [67016-026LF](#) [67095-007LF](#) [68631-112](#) [68645-018](#) [68648-049](#) [699319-000](#) [70.362.1628.0](#) [70-4210](#) [70-4226B](#)  
[70-4853B](#) [707-5020](#) [707-5028](#) [71.350.2428.0](#) [71961-016LF](#) [733-134](#) [754199-000](#) [760-3052](#) [787-8014-00](#) [FCN-367T-T012/H](#) [80.063.4001.1](#)  
[800-90-001-10-001000](#) [800-90-010-10-002000](#) [801-43-002-10-013000](#) [801-43-006-10-002000](#) [803-41-018-10-001000](#) [803-43-014-20-](#)  
[001000](#)