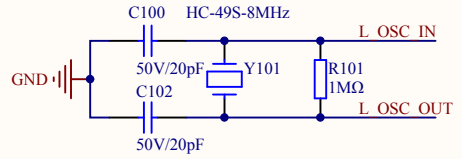
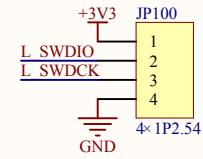
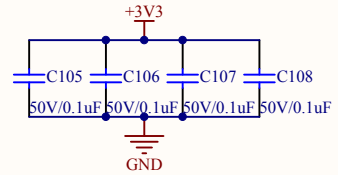
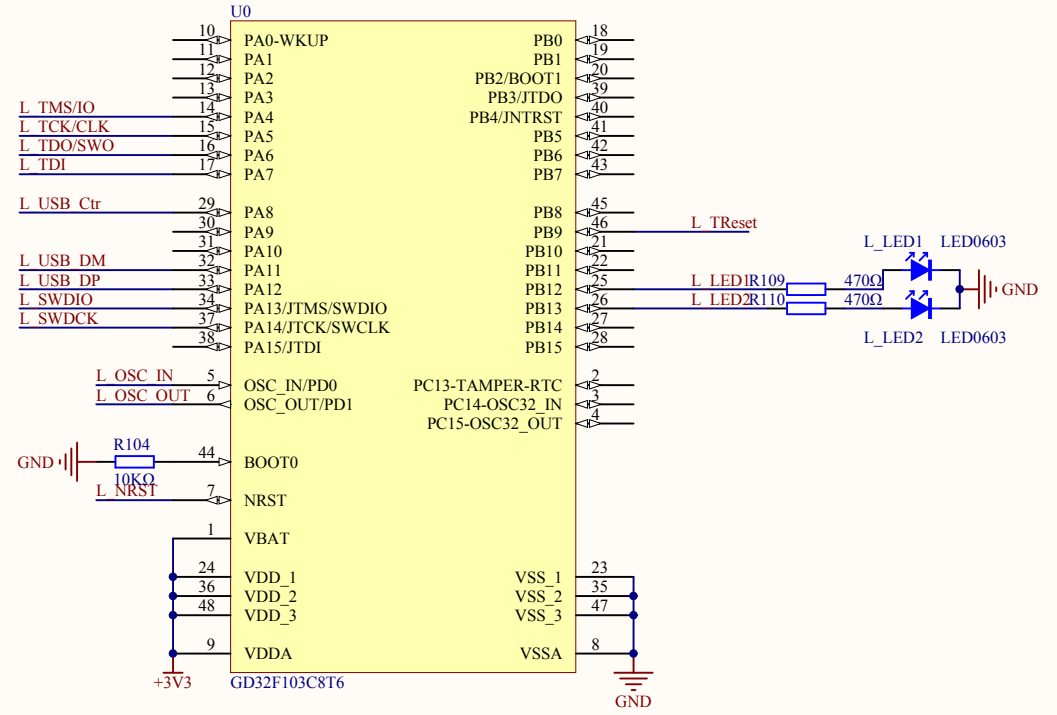
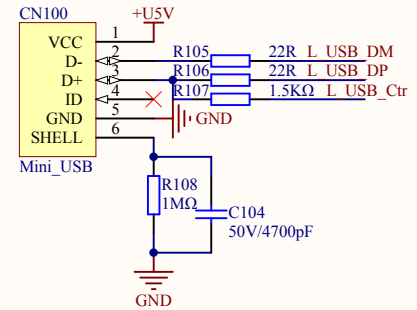
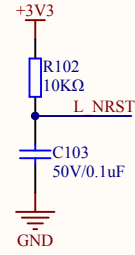


MCU SWD



Reset



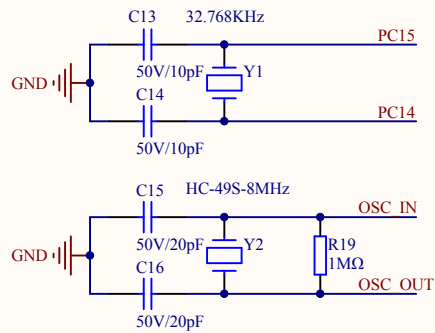
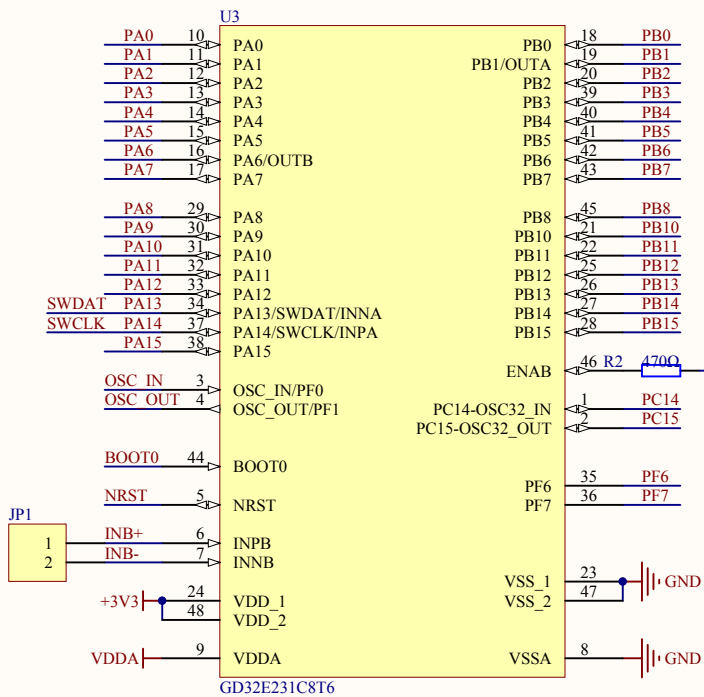
Company Name: GigaDevice

File Name: GDLink

Revision: 1.0

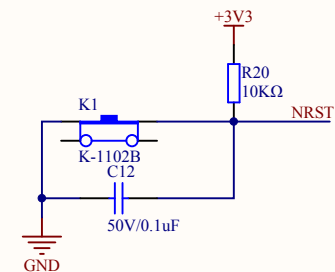
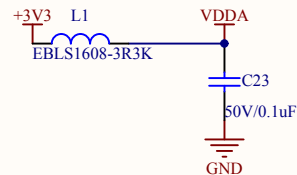
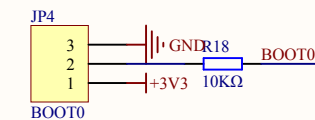
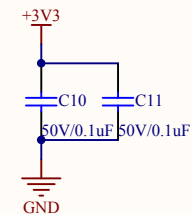
Data: 2018-9

Author: XuFei



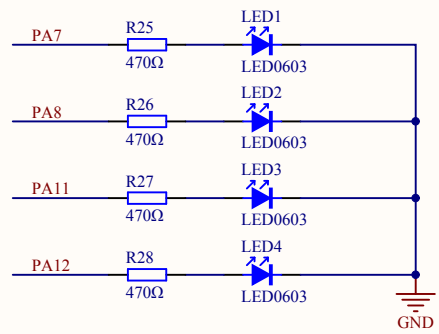
SWD GDLink

SWDAT	L TMS/IO
SWCLK	L TCK/CLK
NRST	L TRreset

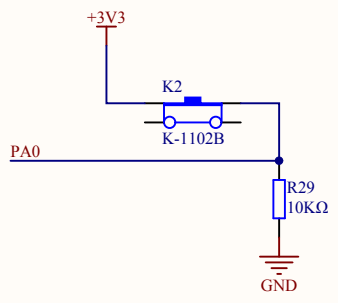


Company Name: GigaDevice		
File Name: MCU		
Revision: 1.0	Data: 2018-9	Author: Xufei

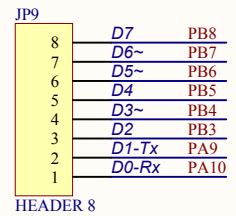
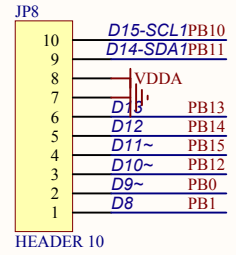
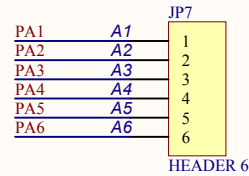
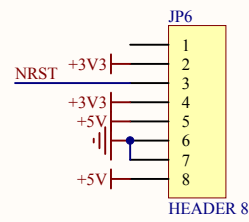
LED



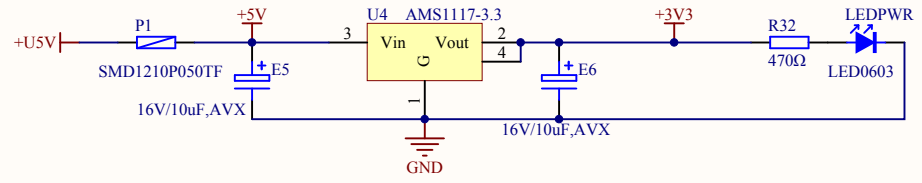
KEY



Arduino



Company Name: GigaDevice		
File Name: Peripherals		
Revision: 1.0	Data: 2019-1	Author: Xufei



Company Name: GigaDevice

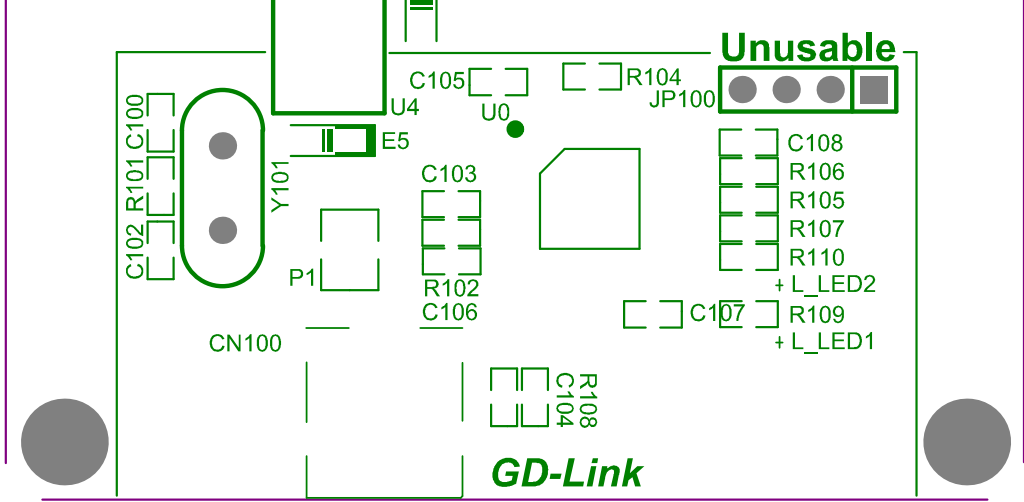
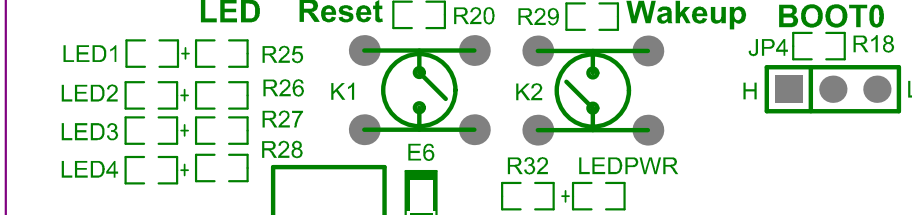
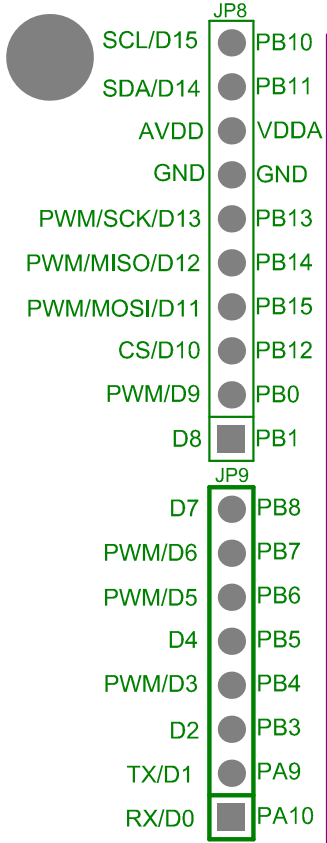
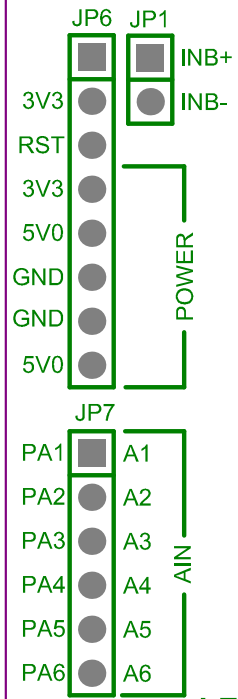
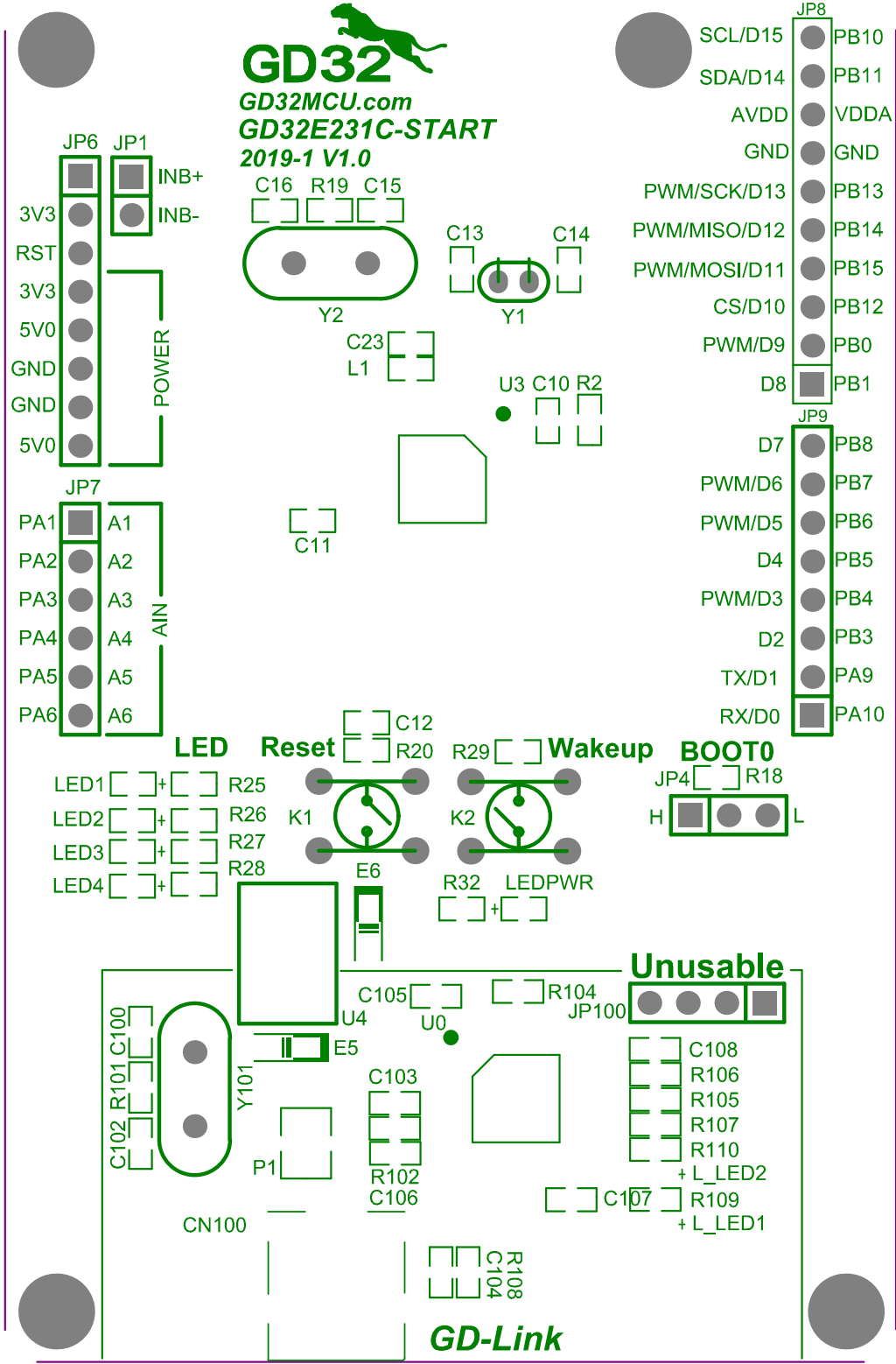
File Name: Power

Revision: 1.0

Data: 2018-9

Author: Xufei

GD32
 GD32MCU.com
GD32E231C-START
 2019-1 V1.0



X-ON Electronics

Largest Supplier of Electrical and Electronic Components

Click to view similar products for [Development Boards & Kits - PIC/DSPIC category](#):

Click to view products by [Gigadevice manufacturer](#):

Other Similar products are found below :

[LSD4NBT-B208000001](#) [DV330021](#) [SC70EV](#) [AFM201T-EVB](#) [AFM201T-EVBPCB](#) [AFW121T-EVBPCB](#) [A9](#) [ECC191953EU](#)
[STM32F103ZET6](#) [RX0227](#) [M5S-AIV03010A3](#) [ZD-MIO-UNO-KIT](#) [ECC577448EU](#) [EPM1002](#) [ESP32-Audio-Kit](#) [ESP32-PICO-KIT](#)
[ECC383116EU](#) [GD32VF103C-START](#) [DM163030](#) [GPIODM-KPLCD](#) [MCP3422EV](#) [MCP3423EV](#) [PIC16F690DM-PCTLHS](#) [TDGL021-2](#)
[MIKROE-2638](#) [MIKROE-2646](#) [MIKROE-2649](#) [MIKROE-2652](#) [MIKROE-1153](#) [MIKROE-1159](#) [MIKROE-1160](#) [MIKROE-1189](#) [MIKROE-](#)
[1684](#) [MIKROE-1717](#) [MIKROE-608](#) [MKSD-Pinboard](#) [NODEMCU](#) [PIC-MT-USB](#) [ECC187854EU](#) [TENS-NS4 DB1](#) [USR-GPRS232-7X-](#)
[EVK](#) [W600_EVB_V2.0](#) [WT32-SC01](#)