

# 233-301 Receptacle with crimp removable contacts MIL-DTL-38999 Series III Type



**Receptacle front View**



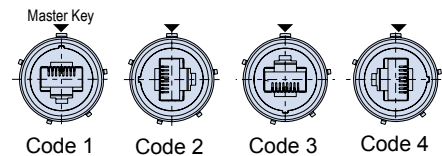
**Receptacle rear View**

Part Number Development									
<b>Sample Part Number</b>	<b>233-301</b>	<b>NF</b>	<b>00</b>	<b>G</b>	<b>17</b>	<b>5H</b>	<b>N</b>	<b>1</b>	<b>T</b>
<b>Basic Number</b>	<b>233-301</b>								
<b>Finish</b>	See Material and Finish table								
<b>Connector Style</b>	See Connector Style table								
<b>Insert-to-Shell Grounding</b>	- = Inline shielded RJ45 insert G = Shielded and grounded to shell <sup>2</sup>								
<b>Shell Size</b>	<b>17</b> or <b>19</b>								
<b>RJ45 Category</b>	<b>5H</b> = CAT 5e For Cat 6A applications consult factory								
<b>Alternate Key Position<sup>1</sup></b>	Per MIL-DTL-38999 <b>A, B, C, D, E, N</b> = Normal								
<b>RJ45 Orientation</b>	<b>1, 2, 3, or 4</b>								
<b>Shrink Boot</b>	<b>T</b> = Part No. 770-028 (Omit for None)								

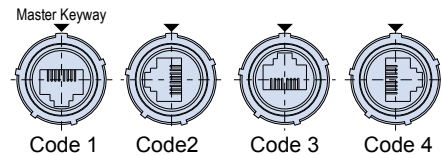
Connector Style <sup>1</sup>	
<b>00</b>	Wall mount receptacle with slotted holes
<b>05</b>	Inline Receptacle
<b>07</b>	rear panel mount, jam nut receptacle
<b>D0</b>	Wall mount receptacle with round holes
<b>CM</b>	Wall mount receptacle with metric clinch nuts
<b>CS</b>	Wall mount receptacle with metric clinch nuts
<b>G6</b>	plug

Material and Finish	
<b>NF</b>	Aluminum/Cadmium, Olive Drab
<b>ME</b>	Aluminum/Electroless Nickel
<b>MT</b>	Aluminum/Nickel PTFE
<b>ZR</b>	Aluminum/Black Zinc-Nickel

**RJ45 Orientation Options (Plug Face)**



**RJ45 Orientation Options (Receptacle Face)**



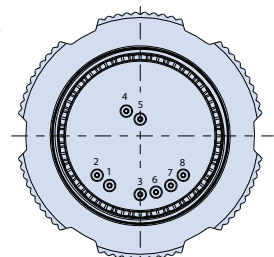
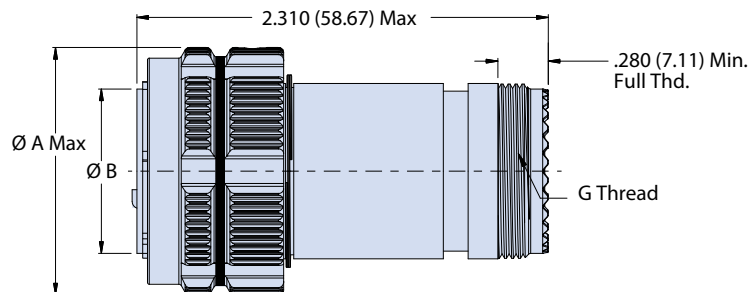
*All external dimensions, features, etc. compliant with D38999/20, /24, &/26. Consult factory for additional information.*

**NOTES**

1. See Section A for alternate key/keyway positions and panel cutout dimensions
2. G option is inline shielded and grounded to shell, available for receptacle only
3. Front panel mount only
4. Crimp removable size 22 pin contacts (M39029/58-360) supplied loose
5. Meets IP67 in unmated condition and IP68 mated condition
6. For shrink boot see part number 770-028
7. Receptacle connector has RJ45 jack

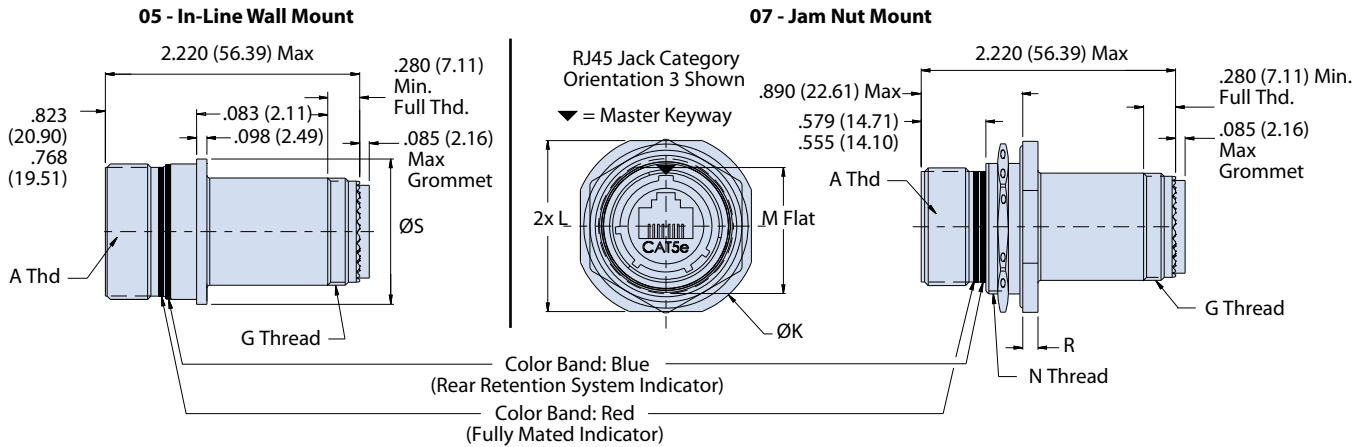
**G6 PLUG WITH ACCESSORY THREADS**

Plug Dimensions				
Shell Size	A Dia Max		B Dia	
	in	mm	in	mm
<b>17</b>	1.406	35.71	.928 .922	23.57 23.42
<b>19</b>	1.516	38.51	1.033 1.027	26.24 26.09



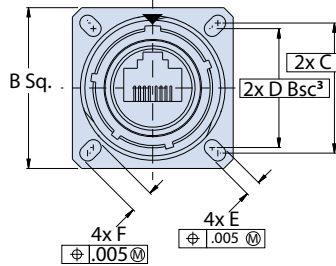
# 233-301 Receptacle with crimp removable contacts MIL-DTL-38999 Series III Type

## 05 - INLINE AND 07 - REAR PANEL MOUNT, JAM NUT RECEPTACLE WITH ACCESSORY THREADS

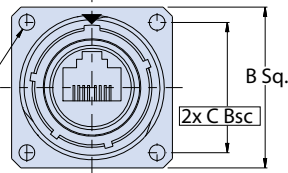


## 00, D0 AND CM - WALL MOUNT RECEPTACLES WITH ACCESSORY THREADS

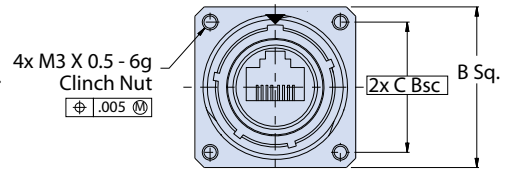
**00 - Wall Mount Receptacle with Slotted Holes (Mating Face)**



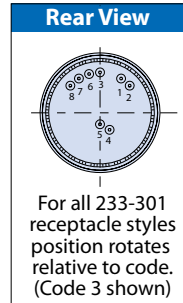
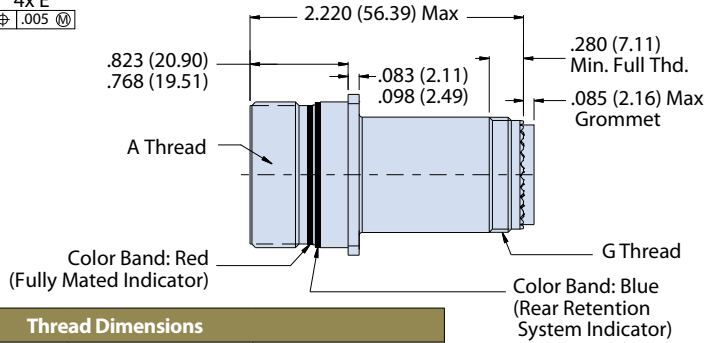
**D0 - Wall Mount Receptacle with Round Holes (Mating Face)**



**CM - Wall Mount Receptacle with Metric Clinch Nuts (Mating Face)**



**00, D0 and CM - Wall Mount Receptacle**



Thread Dimensions			
Shell Size	A Thread	G Thread	N Thread
17	1.1875-.1P-.3L-TS-2A	M25 x 1.0-6g 0.100R	M32 x 1.0-6g 0.100R
19	1.2500-.1P-.3L-TS-2A	M28x 1.0-6g 0.100R	M35 x 1.0-6g 0.100R

In-line and Jam Nut Receptacle Dimensions					
Shell Size	ØK	L	M	R	ØS
17	1.764 (44.81)	1.642 (41.71)	1.191 ( )	.122 (3.09)	1.275
	1.740 (44.20)	1.610 (40.89)	1.181 ( )	.083 (2.11)	(32.39)
19	1.949 (49.50)	1.827 (46.51)	1.316 ( )	.153 (3.89)	1.337
	1.925 (48.90)	1.795 (45.59)	1.305 ( )	.114 (2.90)	(33.96)

Wall Mount Receptacle Dimensions						
Shell Size	B Sq	C Bsc	D Bsc³	E	F	Ø H Holes
17	1.323 (33.60)	1.062 (26.97)	.969 (24.61)	.136 (3.45)	.202 (5.13)	.136 (3.45)
	1.299 (32.99)	1.062 (26.97)	.969 (24.61)	.120 (3.05)	.186 (4.72)	.120 (3.05)
19	1.449 (36.80)	1.156 (29.36)	1.062 (26.97)	.120 (3.05)	.186 (4.72)	.120 (3.05)
	1.425 (36.20)	1.156 (29.36)	1.062 (26.97)	.120 (3.05)	.186 (4.72)	.120 (3.05)

## X-ON Electronics

Largest Supplier of Electrical and Electronic Components

*Click to view similar products for [Modular Connectors](#) / [Ethernet Connectors](#) category:*

*Click to view products by [Glenair](#) manufacturer:*

Other Similar products are found below :

[8949-H88/06BLKA/SN](#) [74441-0010/BKN](#) [PHP-6P6C-5](#) [GAX-3-66](#) [GAX-8-62](#) [GDCX-PN-66](#) [GLX-A-44](#) [GLX-N-1010M-BLK](#) [GMX-SMT4-N-88](#) [GSGX-N-2-88](#) [GSGX-N-4-88](#) [GSX-NS2-88-3.05](#) [GSX-NS-88-3.68](#) [PT-108A-8C-UL](#) [PTS-J531-8CS-50UL](#) [A-2014-0-4](#)  
[GWLX-S9-88-YG](#) [DC-1021-8-WH-6](#) [1300530003](#) [1324640-4](#) [RJ11FTVC2G](#) [RJ11FTVC2N](#) [RJFTVX2SA1G](#) [132764-001](#) [1413235](#)  
[MPS88RX-5000](#) [E5288-S000K3-L](#) [155302-001](#) [AX101050](#) [AX101063](#) [AX101065](#) [AX101072](#) [AX101307](#) [AX101315](#) [AX101318](#)  
[AX102271](#) [AX102288](#) [AX102651](#) [AX102660](#) [J0012D21NL](#) [J0026D01ENL](#) [PC4D0018P](#) [8949-B88/6](#) [2-6609208-5](#) [937-SP-3088-2PC-A192](#)  
[303066VFL](#) [303068V](#) [303088LFLSA](#) [303088SBL](#) [30-8603](#)