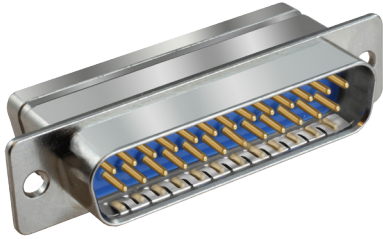


SERIES 28

# HiPer-D Space Grade Connectors

280-018P inline cable or panel mount pin connector, crimp termination

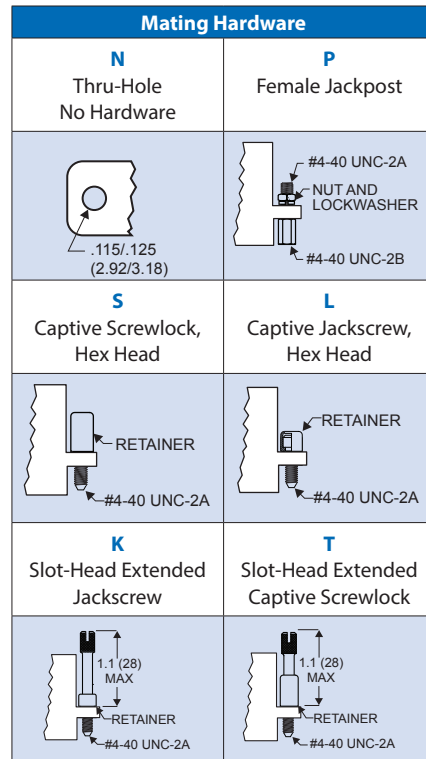


HiPer-D pin connectors for cable or panel mount feature crimp, rear-releaseable size #20 or #22 contacts. Intermateable with standard M24308-type D-Subminiature connectors, the HiPer-D features a rugged machined aluminum shell, waterproof sealing and optional ground springs for improved resistance to electromagnetic interference. Gold-plated size #20 contacts conform to M39029/64-369 and accept #20 to #24 AWG wire. Gold-plated size #22 contacts conform to M39029/58-360 and accept #22 to #28 AWG wire. Contacts are packaged with connector. Glass-reinforced thermoset epoxy insulators, copper alloy retention clips. Fluorosilicone face seal and rear grommet meet IP67 immersion requirement. 1000 VAC, 5 Amps (#22) or 7.5 Amps (#20).

B

| How To Order                   |  |  |   |  |      |    |   |   |
|--------------------------------|--|--|---|--|------|----|---|---|
| Sample Part Number             | 280-018P   |  |   |  | 3S25 | ME | G | P |
| Basic Part Number              | 280-018P   |  |   |  |      |    |   |   |
| Shell Size-Contact Arrangement | See Shell Size - Contact Arrangements Table  |  |   |  |      |    |   |   |
| Shell Finish                   | ME = Electroless Nickel (RoHS)<br>Z2 = Gold (RoHS)<br>Z1 = Passivated Stainless Steel (RoHS)                         |  |   |  |      |    |   |   |
| Ground Spring                  | G = Supplied with EMI Ground Spring  |  | N = No Ground Spring  |  |      |    |   |   |
| Mating Hardware                | N = No Hardware (Through-Hole)<br>L = Jackscrew, Hex Head, Low Profile<br>S = Screwlock, Male, Hex Head, Low Profile |  | P = #4-40 Female Jackpost<br>K = Jackscrew, Slot Head, Extended Length<br>T = Screwlock, Male, Slot Head, Extended Length |  |      |    |   |   |

| Shell Size - Contact Arrangements |                      |     |
|-----------------------------------|----------------------|-----|
| Shell Size-Contact Arr.           | Contact Size and Qty |     |
|                                   | #20                  | #22 |
| <b>Standard Density</b>           |                      |     |
| 1S9                               | 9                    |     |
| 2S15                              | 15                   |     |
| 3S25                              | 25                   |     |
| 4S37                              | 37                   |     |
| 5S50                              | 50                   |     |
| <b>High Density</b>               |                      |     |
| 1H15                              |                      | 15  |
| 2H26                              |                      | 26  |
| 3H44                              |                      | 44  |
| 4H62                              |                      | 62  |
| 5H78                              |                      | 78  |
| 6H104                             |                      | 104 |



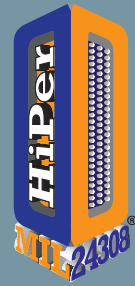
| Materials and Finishes |                                       |
|------------------------|---------------------------------------|
| Shell                  | Aluminum alloy                        |
| Contacts               | Copper alloy, 50 microin. gold plated |
| Insulators             | Thermoset epoxy                       |
| Retention Clips        | Copper alloy                          |
| Grommet and Seal       | Fluorosilicone rubber                 |
| EMI Spring             | Copper alloy, nickel plated           |
| Hardware               | 300 series stainless steel            |

| Specifications        |                          |
|-----------------------|--------------------------|
| Current Rating        | #22 5 AMPS, #20 7.5 AMPS |
| Test Voltage          | 1000 VAC RMS             |
| Insulation Resistance | 5000 megohms minimum     |
| Operating Temperature | -65° C. to +200° C.      |
| Ingress Protection    | IP 67                    |
| Shock                 | 300 g.                   |
| Vibration, Random     | 43.92 g.                 |

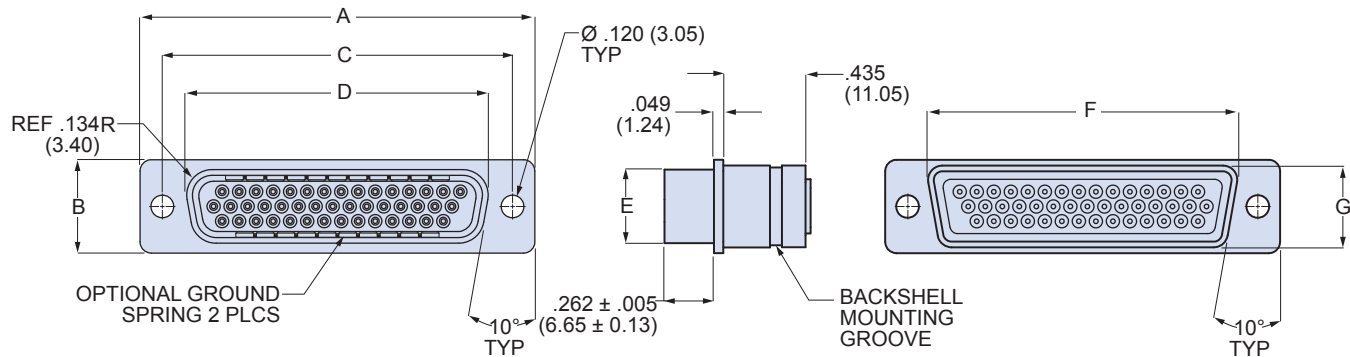
SERIES 28

# HiPer-D Space Grade Connectors

280-018P inline cable or panel mount pin connector, crimp termination



## 280-018P DIMENSIONS



| Dimensions |       |       |      |       |         |       |       |       |      |       |        |       |        |       |
|------------|-------|-------|------|-------|---------|-------|-------|-------|------|-------|--------|-------|--------|-------|
| Shell Size | A     |       | B    |       | C Basic |       | D     |       | E    |       | F Max. |       | G Max. |       |
|            | in    | mm    | in   | mm    | in.     | mm    | in    | mm    | in   | mm    | in.    | mm    | in.    | mm    |
| 1          | 1.213 | 30.81 | .494 | 12.55 | .984    | 24.99 | .726  | 18.44 | .389 | 9.88  | .769   | 19.53 | .432   | 10.97 |
| 2          | 1.541 | 39.14 | .494 | 12.55 | 1.312   | 33.32 | 1.054 | 26.77 | .389 | 9.88  | 1.093  | 27.76 | .432   | 10.97 |
| 3          | 2.088 | 53.04 | .494 | 12.55 | 1.852   | 47.04 | 1.594 | 40.49 | .389 | 9.88  | 1.635  | 41.53 | .432   | 10.97 |
| 4          | 2.729 | 69.32 | .494 | 12.55 | 2.500   | 63.50 | 2.242 | 56.95 | .389 | 9.88  | 2.282  | 57.96 | .432   | 10.97 |
| 5          | 2.635 | 66.93 | .605 | 15.37 | 2.406   | 61.11 | 2.139 | 54.33 | .501 | 12.73 | 2.188  | 55.58 | .544   | 13.82 |
| 6          | 2.729 | 69.32 | .668 | 16.97 | 2.500   | 63.50 | 2.272 | 57.71 | .563 | 14.30 | 2.312  | 58.72 | .606   | 15.39 |

## NOTES

- HiPer-D connectors are available with a wide variety of materials and finishes. See [About Series 28 HiPer-D® Shell Plating Options](#) for additional choices. Glenair offers the industry's widest selection of plating and material choices with no setup charge, no minimum order quantity and no schedule impact.
- For panel cutout dimensions, refer to [Panel Cutouts and Printed Circuit Board Footprints](#).
- Connectors are supplied with crimp contacts per M39029. Contacts are not installed. Refer to [HiPer-D® Contacts and Crimp Tools](#) for contact part numbers, specifications, crimp tool information, and insertion/extraction tools.
- HiPer-D connectors meet the requirements of MIL-DTL-24308 and are intermateable with standard M24308-type D-Subminiature connectors with corresponding contact arrangements and type.
- Additional electrical, mechanical and environmental specifications are listed in [HiPer-D® Product Specification](#).

## X-ON Electronics

Largest Supplier of Electrical and Electronic Components

*Click to view similar products for [D-Sub High Density Connectors](#) category:*

*Click to view products by [Glenair](#) manufacturer:*

Other Similar products are found below :

[97-3250-11](#) [163A16809X](#) [163A17089X](#) [164A17199X](#) [K86X-AD-26S](#) [242A25680X](#) [L717HDB44POL2R210](#) [L717HDEH15POL2](#)  
[L777HDE15P](#) [L77HDE15SC309](#) [163A16759X](#) [163A16839X](#) [163A16989X](#) [163A17079X](#) [164A17329X](#) [164A18219X](#) [241A16440X](#)  
[241A16550X](#) [241A16680X](#) [241A20810X](#) [241A25740X](#) [CT25-44P](#) [MDBE15PE766](#) [L177HDE15SOL2RM23](#) [L177HRC62S](#)  
[L177HRC62SVFM](#) [L177HRCG62S](#) [L717HDEG15POL2RM5](#) [L77HDA26SVF](#) [L77HDE15SD1CO](#) [L77HDEH15SOL2RM832](#) [DAMA-15S-](#)  
[WS](#) [443895-3](#) [106698-1](#) [280-012K2C](#) [L177HRB44S](#) [164A17039X](#) [09562004701510](#) [241A17960X](#) [164A18269X](#) [280-019S1S9MEN](#)  
[L777HDEG15P](#) [280-018P3S25MEGN](#) [206504-2](#) [2057140-1](#) [C115370-6002](#) [DFMA104SNMBFR172FR022](#) [HDC9F200E2S](#)  
[L717HDAG26POL2RM8](#) [241A28180X](#)