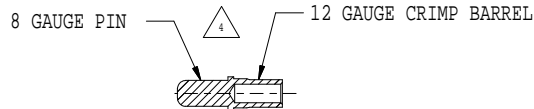
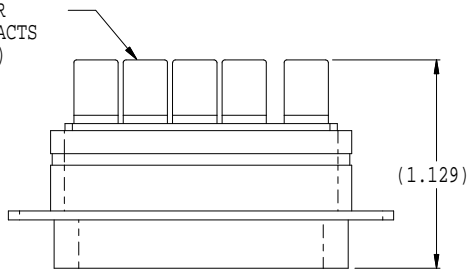
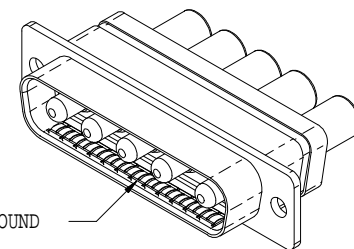
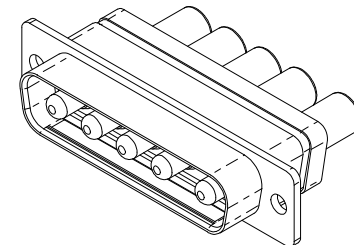
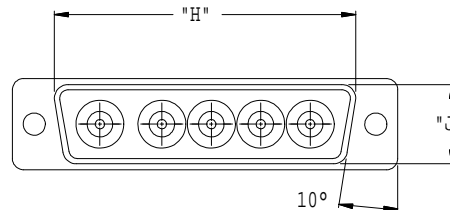
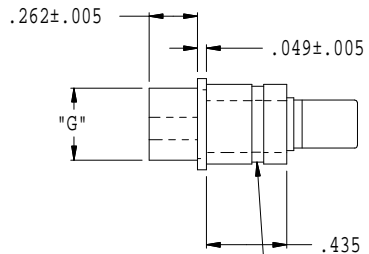
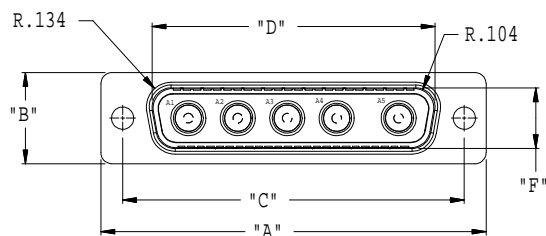


GROMMET FOLLOWER
FOR 8 GAUGE CONTACTS
(SUPPLIED LOOSE)



REVISIONS			
SYM.	DESCRIPTION	DATE	APPROVED
1	PRELIMINARY	01/16/13	BFP
2	REVISED	02/07/18	BL



280 - 046 P 3 - 5P5 ME G N

BASIC SERIES

CONTACT
P - PIN

GROUNDING OPTION
G - EMI/GROUNDING
N - NONE

HARDWARE OPTIONS

- N - NONE (THROUGH HOLE)
- P - FEMALE JACK-POST (FOR CABLE MOUNTING ONLY)
- L - LOW PROFILE HEX HEAD CAPTIVE JACK-SCREW
- K - SLOT HEAD EXTENDED JACK-SCREW
- S - LOW PROFILE CAPTIVE SCREWLOCK, HEX HEAD
- T - SLOT HEAD EXTENDED CAPTIVE SCREWLOCK

OPTIONAL EMI GROUND
SPRING

SHELL FINISH

- ME - ELECTROLESS NICKEL OVER ALUMINUM
- MT - NICKEL FLUOROCARBON OVER ALUMINUM
- Z1 - PASSIVATED STAINLESS
- ZM - ELECTROLESS NICKEL OVER STAINLESS
- JF - YELLOW CHROMATE OVER CADMIUM

NOTES: UNLESS OTHERWISE SPECIFIED

1. MATERIALS/FINISHES:
SHELL - SEE PART NUMBER DEVELOPMENT
INSERTS - THERMOSET EPOXY
INTERFACIAL/PERIPHERAL SEAL - FLUOROSILICONE/NA
CONTACTS - COPPER ALLOY/GOLD OVER NICKEL
2. CONTACT OPTION *
P = 8 GAUGE WITH 12 GAUGE CRIMP BARREL AND SEALING BOOT (SUPPLIED LOOSE)
W = SUPPLIED LESS 8 GAUGE CONTACTS AND SEALING BOOTS (20 GAUGE SIGNAL CONTACTS STILL INCLUDED)
3. WHEN PANEL MOUNTING, ORDER CONNECTOR WITHOUT HARDWARE (N OPTION)
SEE 289-015 FOR PANEL MOUNTING HARDWARE KITS
SEE 289-018 FOR PANEL CUTOUT RECOMMENDATIONS

4. POWER CONTACTS FEATURE 8 GAUGE INTERFACE WITH 12 GAUGE CRIMP BARREL
CRIMP TOOL: GLENNAIR 859-081 (DANIELS M309)
POSITIONER: GLENNAIR 859-083 (DANIELS TP111)

5. SIGNAL CONTACTS PER M39029/64-369
CRIMP TOOL: GLENNAIR 809-015/DANIELS AFMB (M22520/2-01)
POSITIONER: GLENNAIR 859-016/ DANIELS K13-1 (M22520/2-08)


6. SEE 289-050 FOR INSERT ARRANGEMENTS AND PC TAIL LAYOUTS

7. ELECTRICAL PERFORMANCE PER MIL-DTL-24308:
DIELECTRIC WITHSTANDING VOLTAGE - 1000 VOLTS
INSULATION RESISTAN - 5000 MEGOHMS MIN @ 500 VDC

SHELL SIZE INSERT ARR.		
SHELL SIZE	COMBO D ARRANGEMENT	CONTACT QUANTITY
1	LAYOUT	2#8
	2*2	2#8
	5*1	4#20, 1#8
2	3*3	3 #8
	7*2	5#20, 2#8
	11*1	10#20, 1#8
	5*5	5 #8
3	9*4	5#20, 4#8
	13*3	10#20, 3#8
	17*2	15#20, 2#8
	21*1	20#20, 1#8
	8*8	8 #8
	13*6	7#20, 6#8
	17*5	12#20, 5#8
	21*4	17#20, 4#8
4	25*3	22#20, 3#8
	27*2	25#20, 2#8
	24*7	17#20, 7#8
	36*4	32#20, 4#8
	43*2	41#20, 2#8
5	47*1	46#20, 1#8
	46*4	42#20, 4#8

SHELL SIZE	"A" ±.015	"B" ±.015	"C" BASIC	"D" ±.005	"E" ±.005	"F" ±.005	"G" ±.005	"H" MAX.	"J" MAX.
1	1.213	.494	.984	.666	.726	.329	.389	.769	.432
2	1.541	.494	1.312	.894	1.054	.329	.389	1.093	.432
3	2.088	.494	1.852	1.534	1.594	.329	.389	1.635	.432
4	2.729	.494	2.5	2.182	2.242	.329	.389	2.282	.432
5	2.635	.605	2.406	2.079	2.139	.441	.501	2.188	.544
6	2.729	.668	2.5	2.212	2.272	.503	.563	2.312	.606

THIS COPYRIGHTED DOCUMENT IS THE PROPERTY OF GLENNAIR, INC. AND IS FURNISHED ON THE CONDITION THAT IT IS NOT TO BE DISCLOSED, REPRODUCED IN WHOLE OR IN PART, OR USED TO SOLICIT QUOTATIONS FROM COMPETITIVE SOURCES, OR USED FOR MANUFACTURE BY ANYONE OTHER THAN GLENNAIR, INC. WITHOUT WRITTEN PERMISSION FROM GLENNAIR, INC. THE INFORMATION HEREIN HAS BEEN DEVELOPED AT GLENNAIR'S EXPENSE AND MAY BE USED FOR ENGINEERING EVALUATION AND INCORPORATION INTO TECHNICAL SPECIFICATIONS AND OTHER DOCUMENTS WHICH SPECIFY PROCUREMENT OF PRODUCTS FROM GLENNAIR, INC.

UNLESS OTHERWISE SPECIFIED DIMENSIONS ARE IN INCHES METRIC DIMENSIONS IN PARENTHESES ARE FOR REFERENCE ONLY	DRAWN	BFP	01/16/13	GLENNAIR, INC. <small>CAD 2006</small> 1211 AIR WAY - GLENDALE - CALIFORNIA 91201
	CHECK	BFP	01/16/13	
	ENGR	BFP	01/16/13	
TOLERANCES: FRACTIONS ± 1/16 DECIMALS .XX ± .03 (0.8) .XXX ± .015 (0.4) ANGLES ± 2°	 APPROVED			CONNECTOR, PLUG, D SUBMINIATURE CRIMP, ENVIRONMENTAL, COMBO D MIL-DTL-24308 STYLE
	DO NOT SCALE THIS DRAWING			
B/F 12C9429		P/C 280		SIZE C
NON REPAIRABLE COMMERCIAL ITEM		SCALE N/A		WEIGHT N/A
SHEET 1 OF 1			REV. 2	SHEET 1 OF 1

X-ON Electronics

Largest Supplier of Electrical and Electronic Components

Click to view similar products for [D-Sub High Density Connectors](#) category:

Click to view products by [Glenair](#) manufacturer:

Other Similar products are found below :

[97-3250-11](#) [163A16809X](#) [163A17089X](#) [164A17199X](#) [K86X-AD-26S](#) [242A25680X](#) [L717HDB44POL2R210](#) [L717HDEH15POL2](#)
[L777HDE15P](#) [L77HDE15SC309](#) [163A16759X](#) [163A16839X](#) [163A16989X](#) [163A17079X](#) [164A17329X](#) [164A18219X](#) [241A16440X](#)
[241A16550X](#) [241A16680X](#) [241A20810X](#) [241A25740X](#) [CT25-44P](#) [MDBE15PE766](#) [L177HDE15SOL2RM23](#) [L177HRC62S](#)
[L177HRC62SVFM](#) [L177HRCG62S](#) [L717HDEG15POL2RM5](#) [L77HDA26SVF](#) [L77HDE15SD1CO](#) [L77HDEH15SOL2RM832](#) [DAMA-15S-](#)
[WS](#) [443895-3](#) [106698-1](#) [280-012K2C](#) [L177HRB44S](#) [164A17039X](#) [09562004701510](#) [241A17960X](#) [164A18269X](#) [280-019S1S9MEN](#)
[L777HDEG15P](#) [280-018P3S25MEGN](#) [206504-2](#) [2057140-1](#) [C115370-6002](#) [DFMA104SNMBFR172FR022](#) [HDC9F200E2S](#)
[L717HDAG26POL2RM8](#) [241A28180X](#)