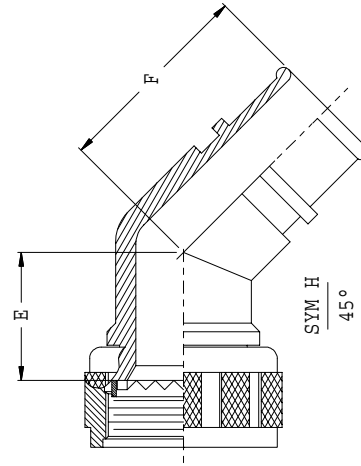
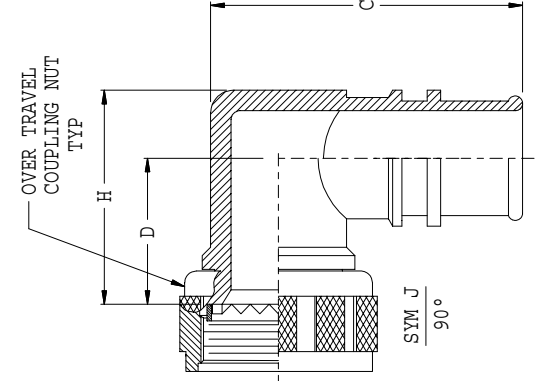
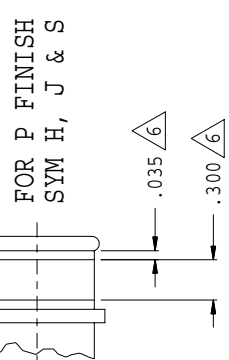
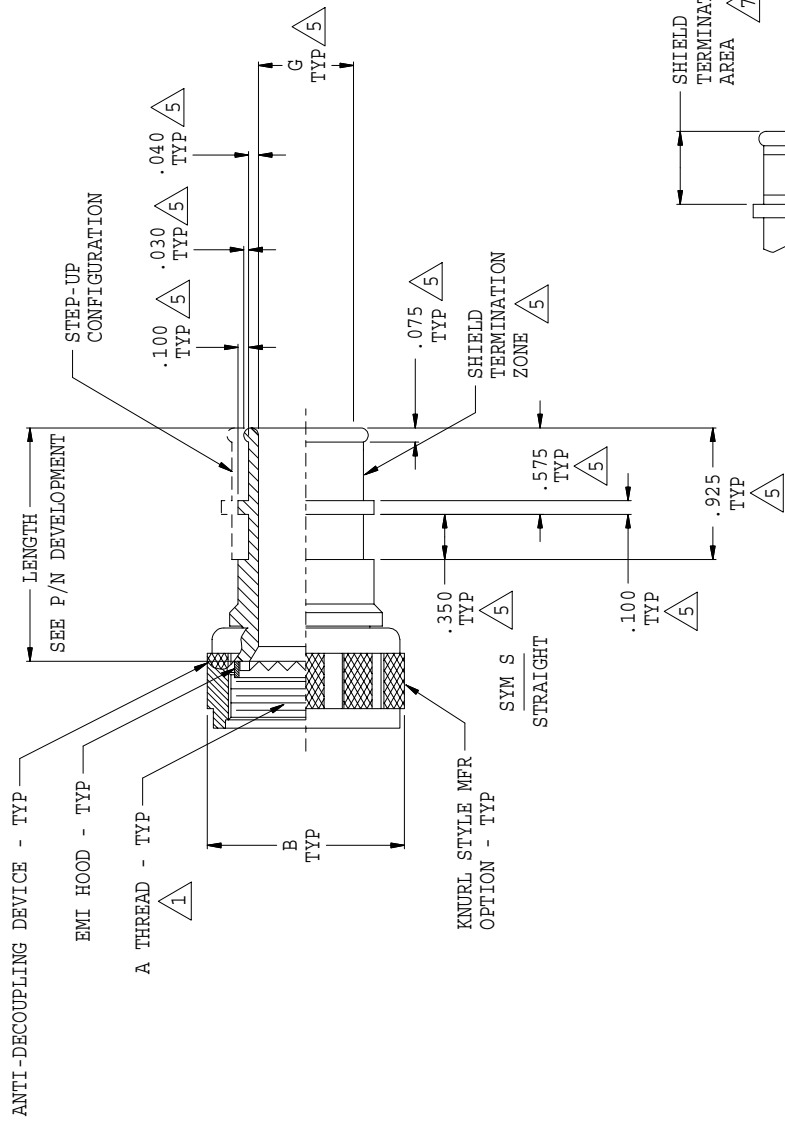


REVISIONS		
SYM.	DESCRIPTION	DATE
A	RELEASED	10/21/98
B	REVISED PER DCN 14279	11/12/98
C	REVISED PER DCN 14287	11/19/98
D	REVISED PER DCN 15219	08/13/99
E	REVISED PER DCN 15256	08/27/99
F	REVISED PER DCN 15355	09/28/99
G	REVISED PER DCN 15586	11/17/99
H	REVISED PER DCN 31644	02/18/09



THIS COPYRIGHTED DOCUMENT IS THE PROPERTY OF GLENAIR, INC. AND IS FURNISHED ON THE CONDITION THAT IT IS NOT TO BE DISCLOSED, REPRODUCED IN WHOLE OR IN PART, OR USED TO SOLICIT QUOTATIONS FROM COMPETITIVE SOURCES, OR USED FOR MANUFACTURE BY ANYONE OTHER THAN GLENAIR, INC. WITHOUT WRITTEN PERMISSION FROM GLENAIR, INC. THE INFORMATION HEREIN HAS BEEN DEVELOPED AT GLENAIR'S EXPENSE AND MAY BE USED FOR ENGINEERING EVALUATION AND INCORPORATION INTO TECHNICAL SPECIFICATIONS AND OTHER DOCUMENTS WHICH SPECIFY PROCUREMENT OF PRODUCTS FROM GLENAIR, INC.

CAD 1994

DRAWN	T. LE	02/10/94
CHECK	P. OAKES	02/10/94
ENGR	T. YOUNG	02/10/94

UNLESS OTHERWISE SPECIFIED  
DIMENSIONS ARE IN INCHES

TOLERANCES:

FRACTIONS ± 1/16

DECIMALS .XX ± .03

DECIMALS .XXX ± .015

ANGLES ± 2°

DO NOT SCALE THIS DRAWING

RELEASE DATE 02/11/94

APPROVED

R. Parks

P. Oakes

NON REPARABLE COMMERCIAL ITEM

E/F 94-6618 E/C 4 4

SCALE N/A WEIGHT N/A SHEET 1 OF 2

CODE IDENT. NO. SIZE 06324 C 447-233 H

REV. H

GLENAIR, INC.  
1211 AIR WAY - GLENDALE - CALIFORNIA 91201

BACKSHELL, OVER TRAVEL, SELF-LOCKING,  
RFI/EMI, FOR CONNECTORS PER TABLE I

TABLE I

SHELL SIZE	B		E		F
	A, F	H	A, F	H	
08	.812	.812	.756	1.147	±.094
10	1.196	.969	.783	1.173	±.094
12	1.062	1.062	.802	1.198	±.094
14	1.219	1.219	.834	1.224	±.094
16	1.345	1.345	.860	1.250	±.094
18	1.421	1.421	.886	1.276	±.094
20	1.562	1.562	.912	1.302	±.094
22	1.656	1.675	.938	1.328	±.094
24	1.796	1.796	.964	1.354	±.094

TABLE II

DASH NO	G		H		D
	A	H	A	H	
03	.188	1.059	.776	±.031	
04	.250	1.121	.807		
05	.312	1.183	.838		
06	.375	1.246	.869		
07	.438	1.309	.900		
08	.500	1.371	.931		
09	.562	1.433	.962		
10	.625	1.496	.993		
11	.688	1.559	1.024		
12	.750	1.621	1.055		
13	.812	1.683	1.086		
14	.875	1.745	1.117		
15	.938	1.807	1.148		
16	1.000	1.869	1.179		
17	1.062	1.931	1.213		
18	1.125	1.996	1.245		
19	1.188	2.058	1.276		
20	1.250	2.121	1.307		
21	1.312	2.184	1.338		
22	1.375	2.247	1.369		

TABLE III

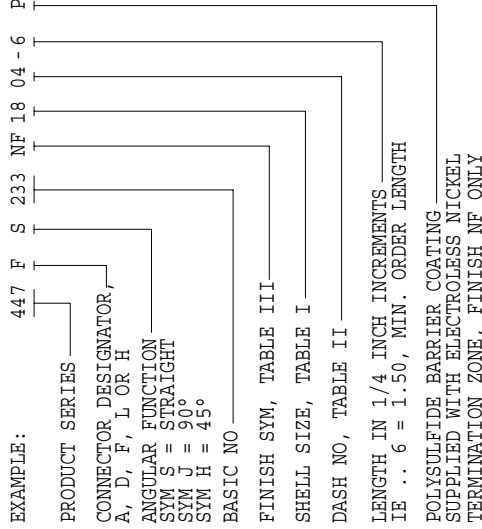
SYM	FINISH DESCRIPTION
NF	CAD/O. D. OVER ELECTROLESS NICKEL (1000 HOUR SALT SPRAY)
M	ELECTROLESS NICKEL

TABLE I (CONTINUED)

C #.031 DASH NO.

SHELL SIZE	03	04	05	06	07	08	09	10	11	12	13	14	15	16	17	18	19	20	21	22
08/09	N/A	1.455	1.516	N/A	N/A	N/A	N/A	N/A	N/A	N/A	N/A	N/A	N/A	N/A	N/A	N/A	N/A	N/A	N/A	N/A
10/11	1.581	1.581	1.581	1.581	1.641	N/A	N/A	N/A	N/A	N/A	N/A	N/A	N/A	N/A	N/A	N/A	N/A	N/A	N/A	N/A
12/13	1.705	1.705	1.705	1.705	1.705	1.705	1.765	N/A	N/A	N/A	N/A	N/A	N/A	N/A	N/A	N/A	N/A	N/A	N/A	N/A
14/15	1.822	1.822	1.822	1.822	1.822	1.822	1.822	1.822	1.822	1.822	1.822	1.822	1.822	1.822	1.822	1.822	1.822	1.822	1.822	1.822
16/17	N/A	1.950	1.950	1.950	1.950	1.950	1.950	1.950	1.950	1.950	1.950	1.950	1.950	1.950	1.950	1.950	1.950	1.950	1.950	1.950
18/19	N/A	2.080	2.080	2.080	2.080	2.080	2.080	2.080	2.080	2.080	2.080	2.080	2.080	2.080	2.080	2.080	2.080	2.080	2.080	2.080
20/21	N/A	N/A	N/A	2.205	2.205	2.205	2.205	2.205	2.205	2.205	2.205	2.205	2.205	2.205	2.205	2.205	2.205	2.205	2.205	2.205
22/23	N/A	N/A	N/A	2.311	2.311	2.311	2.311	2.311	2.311	2.311	2.311	2.311	2.311	2.311	2.311	2.311	2.311	2.311	2.311	2.311
24/25	N/A	N/A	N/A	2.431	2.431	2.431	2.431	2.431	2.431	2.431	2.431	2.431	2.431	2.431	2.431	2.431	2.431	2.431	2.431	2.431

PART NUMBER DEVELOPMENT



NOTES:

- SEE SHEET 2 (COMMON ACCESSORY INTERFACE DATA STD-001).
- FOR EFFECTIVE GROUNDING, CONNECTOR WITH CONDUCTIVE FINISH SHOULD BE USED.
- GLENRAIR 600 SERIES BACKSHELL ASSEMBLY TOOLS ARE RECOMMENDED FOR ASSEMBLY AND INSTALLATION.
- EQUIVALENT TO BELL HELICOPTER SPEC # 30-269.
- THESE DIMENSIONS ARE FOR SYM. H, J & S.
- AREA TO BE FREE OF POLYSULFIDE.
- FOR P FINISH, THIS AREA SHALL BE FREE OF CAD./O.D. TO PROVIDE A SHIELDED TERMINATION AREA. THE JUNCTION BETWEEN BARE NICKEL AND CADMIUM SHALL BE COVERED WITH A .03 MAXIMUM HEIGHT BEAD OF POLYSULFIDE.

8. MATERIAL/FINISH:

ADAPTERS, COUPLING NUT - AL ALLOY/SEE TABLE III  
 ANTI-DECOUPLING DEVICE - CORROSION RESISTANT & HI-GRADE ENGINEERING THERMOPLASTIC MATERIALS

SYN.		REVISIONS																	
SEE SHEET 1		DESCRIPTION	DATE	APPROVED															

DRAWN T. LE		02/10/94	CAD 1994	
CHECK P. OKES	ENGR T. YOUNG	02/10/94	GLENRAIR, INC.	
UNLESS OTHERWISE SPECIFIED		1211 AIR WAY - GLENDALE - CALIFORNIA 91201		
DIMENSIONS ARE IN INCHES		BACKSHELL, OVER TRAVEL, SELF-LOCKING, RFI/EMI, FOR CONNECTORS PER TABLE I		
TOLERANCES:				
FRACTIONS	± 1/16			
DECIMALS	.XX ±.03			
ANGLES	.XXX ±.015			
DO NOT SCALE THIS DRAWING				
RELEASE DATE	02/11/94	CODE IDENT. NO.	SIZE	REV.
ORIGINAL DASHING DATE		06324	C	447-233
NON REPARABLE COMMERCIAL ITEM		SCALE	N/A	WEIGHT
E/F	94-6618	P/C	44	SHEET
			N/A	2 OF 2

## X-ON Electronics

Largest Supplier of Electrical and Electronic Components

*Click to view similar products for [Standard Circular Connector](#) category:*

*Click to view products by [Glenair](#) manufacturer:*

Other Similar products are found below :

[5M2530B10P](#) [600259N006](#) [600273N007](#) [6134-336-13149](#) [6134-337-11149](#) [6134-337-2390](#) [6134-341-17149](#) [6280-4SG-516](#) [6280-7SG-3DC](#)  
[6290](#) [6291A](#) [66200A-10](#) [680-SMG](#) [681-PMG](#) [CXS3102A14S2P](#) [CXS3102A181S](#) [7251-6SG-300](#) [7271-6SG-300](#) [7282-3PG-300-CH3](#) [75-](#)  
[474014-05S](#) [75-474618-01S](#) [75-474618-04P](#) [75-474618-04S](#) [799539-000](#) [MI8-SE](#) [805-005-07NF11-19PC](#) [805-005-07NF15-7PA](#) [8280-4PG-](#)  
[516](#) [8280-7PG-519](#) [8282-5PG-519](#) [836783-1](#) [MP-4102-25P-C](#) [862256-1](#) [864019-2](#) [866857-1](#) [867865-1](#) [PT01SP-14-18P](#) [PT08P-14-5S](#)  
[PTSF06SE-14-12S](#) [120-1833-000](#) [QCM019PC2DC012B](#) [1-2069279-1](#) [121583-0217](#) [121667-0020](#) [129591AU](#) [1000B BULK](#) [RD10A16-19-](#)  
[P6CS051/1](#) [RD10A20-31-P8CS051/1](#) [RD16A14-12-S6CS051/2](#) [1301240290](#) [1301240347](#)