



DRAWING NUMBER.

378-104

DRAWN S.C.

APP

DATE.

22/DEC/92

EPF

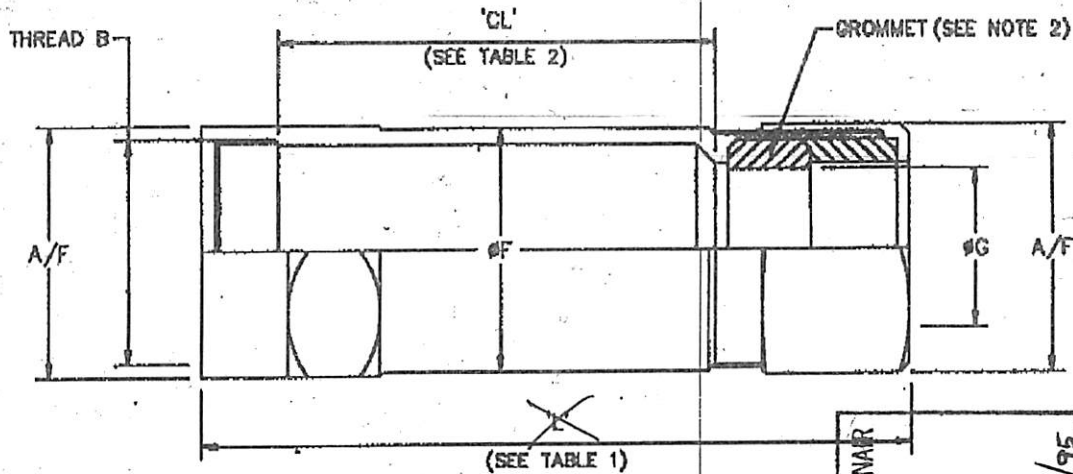
300G

CODE

R

CIRC

TITLE. ENVIRONMENTAL ADAPTOR TO FIT 448-119



PRINT NO. 2
 DATE 20/4/93
 USE FOR PRODUCTION

PART No. DEVELOPMENT

EXAMPLE 378 N S 104 NF 09 55

PRODUCT CODE

CONNECTOR DESIGNATOR 'H'

S=STRAIGHT

BASIC No.

MATL CODE	FINISH
A	NF
AB	BB

ADAPTOR CODE

(TABLE I)

CHAMBER LENGTH CODE (CL)

(TABLE II)

THIS DRAWING HAS BEEN REVIEWED BY GLENAIR ENGINEERING DEPARTMENT AND IS APPROVED:
 WITHOUT EXCEPTION
 WITH EXCEPTIONS NOTED
 REVIEWED BY: [Signature]
 DATE: 10/11/95

ADAPTOR CODE	THREAD 'B'	#F	A/F	#G		LENGTH 'L' FOR 'CL'				
				MIN	MAX	55	60	65	70	75
01	M18x1	20	22	6.60	10.60	95	100	105	110	115
02	M18x1	20	22	6.60	10.60	95	100	105	110	115
03	M19x1	21	25	10.10	12.00	95	100	105	110	115
04	M23x1	28	28	10.80	16.30	95	100	105	110	115
05	M23x1	28	28	10.80	18.30	95	100	105	110	115
06	M26x1	29	33	14.60	19.80	95	100	105	110	115
07	M26x1	32	36	18.50	24.00	95	100	105	110	115
08	M34x1	37	38	22.00	25.00	95	100	105	110	115
09	M37x1	40	42	26.00	28.60	95	100	105	110	115

CHAMBER LENGTH CODE	CHAMBER LENGTH 'CL'
55	55
60	60
65	65
70	70
75	75

NOTE.

SEE STD 001 (COMMON ACCESSORY INTERFACE DATA).

MATERIAL CODE 'A' = ALUMINIUM MACHINED

'AB' = NICKEL ALUMINIUM BRONZE

2. GROMMET SUPPLIED WITH ADAPTOR

REVISION	A	B	C
DCO		80-288	80-443
DATE	5/9/91	14/10/91	22/12/92

X-ON Electronics

Largest Supplier of Electrical and Electronic Components

Click to view similar products for [Circular MIL Spec Tools, Hardware & Accessories](#) *category:*

Click to view products by [Glenair](#) *manufacturer:*

Other Similar products are found below :

[0113-201-2025](#) [600-079-06](#) [600-146-06](#) [M10-101982-143](#) [M10-101982-163](#) [M10-101983-183](#) [M10-150912-083](#) [M10-454396-008](#)
[602GB18808](#) [CS3102A-22-14PW](#) [M2887615-CD](#) [627-009](#) [M38999/9-19B](#) [630A007NF083A](#) [630B007M051A](#) [630BJ003NF032H](#) [637-](#)
[149NF04B](#) [M39029/29-215](#) [6408-203V-09273](#) [6426-201-11343](#) [650FS002NF16](#) [660-008NF14S7-01](#) [660-009M22H8-03](#) [660-013NF19U6-](#)
[210](#) [660-015M10S6-17](#) [660-015NF10S5-01](#) [660-015NF14R3.5-01](#) [660-023NF19H6-19](#) [660-024NF11S12-01](#) [660-024NF11S3-01](#) [660-](#)
[024NF17S4-109](#) [660-050XM17F4-01](#) [660-068NF25R6-30G](#) [660-070M23S8-04](#) [660-073MTCH9-20](#) [M83723/61-18W](#) [M83723/61-218R](#)
[M83723/61-224W](#) [667-084-23C](#) [667-084-35C](#) [667-224NF16](#) [687-697NF-1](#) [M85049/94-10-A](#) [M85049/96-7-A](#) [M855282-10A01A](#)
[M85528/2-10B](#) [M855282-18A01A](#) [M85528/2-22A01A](#) [M85528/2-22AA](#) [710HS460NF2508](#)