

TABLE I

SHELL SIZE	A THREAD CLASS 2B	B DIA MAX	MAX ENTRY
08	7/16-28 UNEF	.77	32
10	9/16-24 UNEF	.94	33
12	3/4-20 UNEF	1.06	34
14	13/16-20 UNEF	1.17	35
16	15/16-20 UNEF	1.27	06
18	1 1/16-18 UNEF	1.40	07
20	1 3/16-18 UNEF	1.53	08
22	1 5/16-18 UNEF	1.62	09
24	1 7/16-18 UNEF	1.75	10

TABLE II

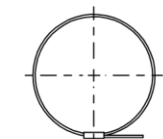
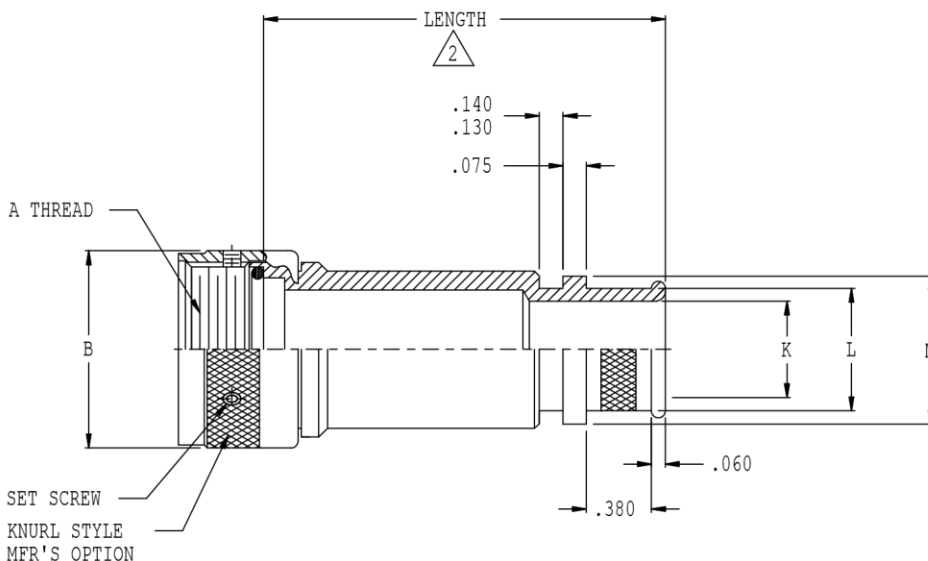
SYM	FINISH DESCRIPTION
B	CADMIUM PLATE/OLIVE DRAB
M	ELECTROLESS NICKEL
N	CADMIUM PLATE/OLIVE DRAB OVER NICKEL PLATE
NF	CAD/O. D. OVER ELECTROLESS NICKEL (500 HOUR SALT SPRAY)

REVISIONS

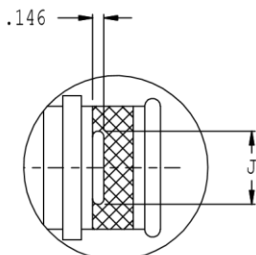
SYM.	DESCRIPTION	DATE	APPROVED
A	RELEASED	03/20/09	MAG
B	REVISED PER DCN 32000	03/26/09	MAG
C	REVISED PER DCN 36192	07/29/10	SAC

TABLE III

DASH NO	J	K	L ±.031	M	T
01	.125	.125	.250	.312	770-003S111
31	.170	.188	.312	.375	770-003S111
02	.170	.250	.375	.438	770-003S112
32	.170	.312	.438	.500	770-003S112
03	.250	.375	.500	.562	770-003S112
33	.250	.438	.562	.625	770-001S104
04	.250	.500	.625	.687	770-001S104
34	.250	.562	.688	.750	770-001S104
05	.500	.625	.750	.812	770-001S104
35	.500	.688	.812	.875	770-001S104
06	.500	.750	.875	.938	770-001S105
36	.500	.812	.938	1.000	770-001S105
07	.500	.875	1.000	1.062	770-001S105
37	.500	.938	1.062	1.125	770-001S105
08	.500	1.000	1.125	1.188	770-001S106
38	.500	1.062	1.188	1.250	770-001S106
09	.500	1.125	1.250	1.312	770-001S107
10	.750	1.250	1.375	1.438	770-001S107

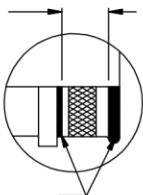


BAND OPTION (K OPTION SHOWN)



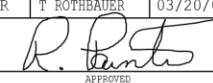
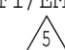
S OPTION SEE PART NUMBER DEVELOPMENT

TERMINATION AREA FREE OF CADMIUM. KNURL OR RIDGES MFRS OPTION



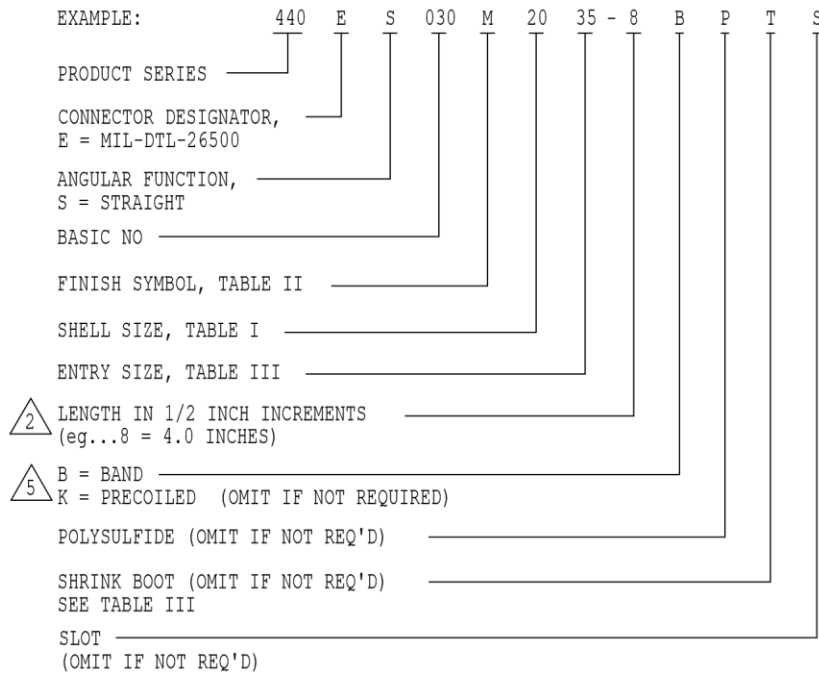
P OPTION POLYSULFIDE STRIPES SEE PART NUMBER DEVELOPMENT

THIS COPYRIGHTED DOCUMENT IS THE PROPERTY OF GLENAIR, INC. AND IS FURNISHED ON THE CONDITION THAT IT IS NOT TO BE DISCLOSED, REPRODUCED IN WHOLE OR IN PART, OR USED TO SOLICIT QUOTATIONS FROM COMPETITIVE SOURCES, OR USED FOR MANUFACTURE BY ANYONE OTHER THAN GLENAIR, INC. WITHOUT WRITTEN PERMISSION FROM GLENAIR, INC. THE INFORMATION HEREIN HAS BEEN DEVELOPED AT GLENAIR'S EXPENSE AND MAY BE USED FOR ENGINEERING EVALUATION AND INCORPORATION INTO TECHNICAL SPECIFICATIONS AND OTHER DOCUMENTS WHICH SPECIFY PROCUREMENT OF PRODUCTS FROM GLENAIR, INC.

UNLESS OTHERWISE SPECIFIED DIMENSIONS ARE IN INCHES TOLERANCES:	DRAWN	M. GOMEZ	03/20/09	GLENAIR, INC. CAD 2008 1211 AIR WAY - GLENDALE - CALIFORNIA 91201		
	CHECK	T ROTHBAUER	03/20/09			
	ENGR	T ROTHBAUER	03/20/09			
FRACTIONS ± 1/16	 APPROVED			BACKSHELL, RFI/EMI BANDING 		
DECIMALS .XX ±.03 .XXX ±.015						
ANGLES ± 2°						
DO NOT SCALE THIS DRAWING	RELEASE DATE	ORIGINAL	RELEASE DATE	CODE IDENT. NO.	SIZE	REV.
				06324	C	C
B/F 98-6860	P/C 44	NON REPAIRABLE COMMERCIAL ITEM		SCALE N/A	WEIGHT N/A	SHEET 1 OF 2

REVISIONS
SEE SHEET 1

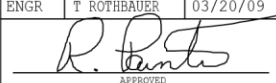
PART NUMBER DEVELOPMENT



NOTES:

- ASSEMBLY IDENTIFIED WITH MANUFACTURER'S NAME AND P/N, SPACE PERMITTING.
- △₂ STANDARD MINIMUM LENGTH IS 1.5 INCHES, FOR SHORTER LENGTH CONSULT FACTORY
- FOR EFFECTIVE GROUNDING, CONNECTOR WITH CONDUCTIVE FINISH SHOULD BE USED
- GLENAIR 600 SERIES BACKSHELL ASSEMBLY TOOLS ARE RECOMMENDED FOR ASSEMBLY AND INSTALLATION
- △₅ BACKSHELLS SUPPLIED WITH 600-052 BAND
- △₆ BACKSHELL SUPPLIED WITH ONE SET SCREW. BACKSHELL COUPLING RING SHALL CONTAIN THREE SET SCREW HOLES, EQUALLY SPACED
- MATERIAL/FINISH:
ADAPTER, COUPLING NUT - AL ALLOY/SEE TABLE II
O-RING - SILICONE/NA
HARDWARE - CRES/PASSIVATED

THIS COPYRIGHTED DOCUMENT IS THE PROPERTY OF GLENAIR, INC. AND IS FURNISHED ON THE CONDITION THAT IT IS NOT TO BE DISCLOSED, REPRODUCED IN WHOLE OR IN PART, OR USED TO SOLICIT QUOTATIONS FROM COMPETITIVE SOURCES, OR USED FOR MANUFACTURE BY ANYONE OTHER THAN GLENAIR, INC. WITHOUT WRITTEN PERMISSION FROM GLENAIR, INC. THE INFORMATION HEREIN HAS BEEN DEVELOPED AT GLENAIR'S EXPENSE AND MAY BE USED FOR ENGINEERING EVALUATION AND INCORPORATION INTO TECHNICAL SPECIFICATIONS AND OTHER DOCUMENTS WHICH SPECIFY PROCUREMENT OF PRODUCTS FROM GLENAIR, INC.

UNLESS OTHERWISE SPECIFIED DIMENSIONS ARE IN INCHES TOLERANCES: FRACTIONS ± 1/16 DECIMALS .XX ±.03 .XXX ±.015 ANGLES ± 2°	DRAWN	M. GOMEZ	03/20/09	GLENAIR, INC. CAD 2008 1211 AIR WAY - GLENDALE - CALIFORNIA 91201
	CHECK	T ROTHBAUER	03/20/09	
	ENGR	T ROTHBAUER	03/20/09	
	 APPROVED			BACKSHELL, RFI/EMI BANDING △ ₅
	APPROVED			
DO NOT SCALE THIS DRAWING	RELEASE DATE	06324		CODE IDENT. NO.
	ORIGINAL RELEASE DATE	C		SIZE
B/F 98-6860	P/C 44	NON REPAIRABLE COMMERCIAL ITEM		440ES030
		SCALE	N/A	WEIGHT
			N/A	SHEET 2 OF 2
				REV. C

X-ON Electronics

Largest Supplier of Electrical and Electronic Components

Click to view similar products for [Circular MIL Spec Backshells](#) category:

Click to view products by [Glenair](#) manufacturer:

Other Similar products are found below :

[60-036152-022](#) [610HS012M15](#) [M28840/504WA](#) [M28840/805WB](#) [M28840/809WA](#) [M28840/815WA](#) [M28840/816WA](#) [627AS017M14](#)
[627MA124M14S](#) [655HS002NF11](#) [CW3899-000](#) [M85049/10-134S](#) [M85049/10-17S](#) [M85049/10-33S](#) [M85049/10-94W](#) [M85049/11-28N](#)
[M85049/11-37N](#) [M85049/11-53N](#) [M85049/11-63N](#) [M85049/124-23W](#) [M85049/1720N04B](#) [M85049/1821W05C](#) [M85049/1825W06C](#)
[M85049/1919N05](#) [M85049/23-74W](#) [M85049/24-71N](#) [M85049/25-47N](#) [M85049/25-94W](#) [M85049/27S12N](#) [M85049/39-11S](#) [M85049/39-17S](#)
[M85049/39-9S](#) [M85049/6-10B](#) [M85049/6-19N](#) [M85049/6-20B](#) [M85049/77-20W04](#) [M85049/78-11N03](#) [M85049/78-15W02](#) [M85049/78-](#)
[17N04](#) [M85049/78-19N05](#) [M85049/79-19N07](#) [M85049/79-25N04](#) [M85049/82-18N02](#) [M85049/82-22P02](#) [M85049/83-10W03](#) [M85049/84-](#)
[20N03](#) [M85049/8-48N](#) [M85049/85-24N01](#) [M85049/85-24P01](#) [M85049/86-16P03](#)