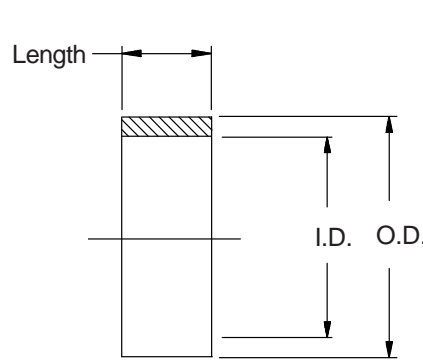


469-001 Shield Support Ring for Use with G-Spring Backshells



460

**For use with
Series 460 and
463 G-Spring
Backshells**



469-001-22

Basic Part No. _____

Dash No. _____

Dash No.	I.D. ±.010 (.3)	O.D. ±.010 (.3)	Length (Note 2)
01	.187 (4.7)	.227 (5.8)	.50 (12.7)
02	.218 (5.5)	.258 (6.6)	.50 (12.7)
03	.250 (6.4)	.290 (7.4)	.50 (12.7)
04	.281 (7.1)	.321 (8.2)	.50 (12.7)
05	.312 (7.9)	.352 (8.9)	.50 (12.7)
06	.343 (8.7)	.383 (9.7)	.50 (12.7)
07	.375 (9.5)	.415 (10.5)	.50 (12.7)
08	.406 (10.3)	.446 (11.3)	.50 (12.7)
09	.438 (11.1)	.478 (12.1)	.50 (12.7)
10	.468 (11.9)	.508 (12.9)	.50 (12.7)
11	.500 (12.7)	.540 (13.7)	.50 (12.7)
12	.531 (13.5)	.571 (14.5)	.50 (12.7)
13	.562 (14.3)	.602 (15.3)	.50 (12.7)
14	.593 (15.1)	.633 (16.1)	.50 (12.7)
15	.625 (15.9)	.665 (16.9)	.50 (12.7)
16	.656 (16.7)	.696 (17.7)	.50 (12.7)
17	.687 (17.4)	.727 (18.5)	.50 (12.7)
18	.718 (18.2)	.758 (19.3)	.50 (12.7)
19	.750 (19.1)	.790 (20.1)	.75 (19.1)
20	.781 (19.8)	.821 (20.9)	.75 (19.1)
21	.812 (20.6)	.852 (21.6)	.75 (19.1)
22	.843 (21.4)	.883 (22.4)	.75 (19.1)
23	.875 (22.2)	.915 (23.2)	.75 (19.1)
24	.906 (23.0)	.946 (24.0)	.75 (19.1)
25	.937 (23.8)	.977 (24.8)	.75 (19.1)
26	.968 (24.6)	1.008 (25.6)	.75 (19.1)
27	1.000 (25.4)	1.040 (26.4)	.75 (19.1)

Dash No.	I.D. ±.010 (.3)	O.D. ±.010 (.3)	Length (Note 2)
28	1.031 (26.2)	1.071 (27.2)	.75 (19.1)
29	1.062 (27.0)	1.102 (28.0)	.75 (19.1)
30	1.093 (27.8)	1.133 (28.8)	.75 (19.1)
31	1.125 (28.6)	1.165 (29.6)	.75 (19.1)
32	1.156 (29.4)	1.196 (30.4)	.75 (19.1)
33	1.187 (30.1)	1.227 (31.2)	.75 (19.1)
34	1.218 (30.9)	1.258 (32.0)	.75 (19.1)
35	1.250 (31.8)	1.290 (32.8)	.75 (19.1)
36	1.281 (32.5)	1.321 (33.6)	.75 (19.1)
37	1.312 (33.3)	1.352 (34.3)	1.00 (25.4)
38	1.343 (34.1)	1.383 (35.1)	1.00 (25.4)
39	1.375 (34.9)	1.415 (35.9)	1.00 (25.4)
40	1.406 (35.7)	1.446 (36.7)	1.00 (25.4)
41	1.437 (36.5)	1.477 (37.5)	1.00 (25.4)
42	1.468 (37.3)	1.508 (38.3)	1.00 (25.4)
43	1.500 (38.1)	1.540 (39.1)	1.00 (25.4)
44	1.531 (38.9)	1.571 (39.9)	1.00 (25.4)
45	1.562 (39.7)	1.602 (40.7)	1.00 (25.4)
46	1.593 (40.5)	1.633 (41.5)	1.00 (25.4)
47	1.625 (41.3)	1.665 (42.3)	1.00 (25.4)
48	1.656 (42.1)	1.696 (43.1)	1.00 (25.4)
49	1.687 (42.8)	1.727 (43.9)	1.00 (25.4)
50	1.718 (43.6)	1.758 (44.7)	1.00 (25.4)
51	1.750 (44.5)	1.790 (45.5)	1.00 (25.4)
52	1.781 (45.2)	1.821 (46.3)	1.00 (25.4)
53	1.812 (46.0)	1.852 (47.0)	1.00 (25.4)
54	1.843 (46.8)	1.883 (47.8)	1.00 (25.4)

1. Finish : Clear Anodize
2. Consult factory for other available lengths.
3. Metric dimensions (mm) are indicated in parentheses.

X-ON Electronics

Largest Supplier of Electrical and Electronic Components

Click to view similar products for [Circular MIL Spec Tools, Hardware & Accessories](#) *category:*

Click to view products by [Glenair](#) *manufacturer:*

Other Similar products are found below :

[0113-201-2025](#) [600-079-06](#) [600-146-06](#) [M10-101982-143](#) [M10-101982-163](#) [M10-101983-183](#) [M10-150912-083](#) [M10-454396-008](#)
[602GB18808](#) [CS3102A-22-14PW](#) [M2887615-CD](#) [627-009](#) [M38999/9-19B](#) [630A007NF083A](#) [630B007M051A](#) [630BJ003NF032H](#) [637-](#)
[149NF04B](#) [M39029/29-215](#) [6408-203V-09273](#) [6426-201-11343](#) [650FS002NF16](#) [660-008NF14S7-01](#) [660-009M22H8-03](#) [660-013NF19U6-](#)
[210](#) [660-015M10S6-17](#) [660-015NF10S5-01](#) [660-015NF14R3.5-01](#) [660-023NF19H6-19](#) [660-024NF11S12-01](#) [660-024NF11S3-01](#) [660-](#)
[024NF17S4-109](#) [660-050XM17F4-01](#) [660-068NF25R6-30G](#) [660-070M23S8-04](#) [660-073MTCH9-20](#) [M83723/61-18W](#) [M83723/61-218R](#)
[M83723/61-224W](#) [667-084-23C](#) [667-084-35C](#) [667-224NF16](#) [687-697NF-1](#) [M85049/94-10-A](#) [M85049/96-7-A](#) [M855282-10A01A](#)
[M85528/2-10B](#) [M855282-18A01A](#) [M85528/2-22A01A](#) [M85528/2-22AA](#) [710HS460NF2508](#)