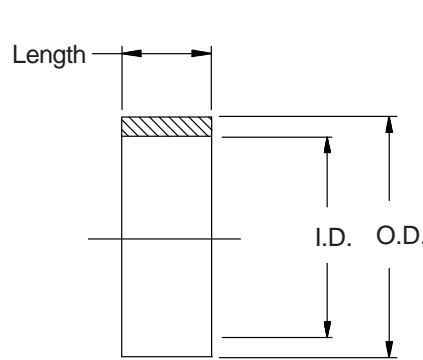


469-001
Shield Support Ring for Use with
G-Spring Backshells



460

For use with
Series 460 and
463 G-Spring
Backshells



469-001-22
 Basic Part No. _____
 Dash No. _____

Dash No.	I.D. ±.010 (.3)	O.D. ±.010 (.3)	Length (Note 2)
01	.187 (4.7)	.227 (5.8)	.50 (12.7)
02	.218 (5.5)	.258 (6.6)	.50 (12.7)
03	.250 (6.4)	.290 (7.4)	.50 (12.7)
04	.281 (7.1)	.321 (8.2)	.50 (12.7)
05	.312 (7.9)	.352 (8.9)	.50 (12.7)
06	.343 (8.7)	.383 (9.7)	.50 (12.7)
07	.375 (9.5)	.415 (10.5)	.50 (12.7)
08	.406 (10.3)	.446 (11.3)	.50 (12.7)
09	.438 (11.1)	.478 (12.1)	.50 (12.7)
10	.468 (11.9)	.508 (12.9)	.50 (12.7)
11	.500 (12.7)	.540 (13.7)	.50 (12.7)
12	.531 (13.5)	.571 (14.5)	.50 (12.7)
13	.562 (14.3)	.602 (15.3)	.50 (12.7)
14	.593 (15.1)	.633 (16.1)	.50 (12.7)
15	.625 (15.9)	.665 (16.9)	.50 (12.7)
16	.656 (16.7)	.696 (17.7)	.50 (12.7)
17	.687 (17.4)	.727 (18.5)	.50 (12.7)
18	.718 (18.2)	.758 (19.3)	.50 (12.7)
19	.750 (19.1)	.790 (20.1)	.75 (19.1)
20	.781 (19.8)	.821 (20.9)	.75 (19.1)
21	.812 (20.6)	.852 (21.6)	.75 (19.1)
22	.843 (21.4)	.883 (22.4)	.75 (19.1)
23	.875 (22.2)	.915 (23.2)	.75 (19.1)
24	.906 (23.0)	.946 (24.0)	.75 (19.1)
25	.937 (23.8)	.977 (24.8)	.75 (19.1)
26	.968 (24.6)	1.008 (25.6)	.75 (19.1)
27	1.000 (25.4)	1.040 (26.4)	.75 (19.1)

Dash No.	I.D. ±.010 (.3)	O.D. ±.010 (.3)	Length (Note 2)
28	1.031 (26.2)	1.071 (27.2)	.75 (19.1)
29	1.062 (27.0)	1.102 (28.0)	.75 (19.1)
30	1.093 (27.8)	1.133 (28.8)	.75 (19.1)
31	1.125 (28.6)	1.165 (29.6)	.75 (19.1)
32	1.156 (29.4)	1.196 (30.4)	.75 (19.1)
33	1.187 (30.1)	1.227 (31.2)	.75 (19.1)
34	1.218 (30.9)	1.258 (32.0)	.75 (19.1)
35	1.250 (31.8)	1.290 (32.8)	.75 (19.1)
36	1.281 (32.5)	1.321 (33.6)	.75 (19.1)
37	1.312 (33.3)	1.352 (34.3)	1.00 (25.4)
38	1.343 (34.1)	1.383 (35.1)	1.00 (25.4)
39	1.375 (34.9)	1.415 (35.9)	1.00 (25.4)
40	1.406 (35.7)	1.446 (36.7)	1.00 (25.4)
41	1.437 (36.5)	1.477 (37.5)	1.00 (25.4)
42	1.468 (37.3)	1.508 (38.3)	1.00 (25.4)
43	1.500 (38.1)	1.540 (39.1)	1.00 (25.4)
44	1.531 (38.9)	1.571 (39.9)	1.00 (25.4)
45	1.562 (39.7)	1.602 (40.7)	1.00 (25.4)
46	1.593 (40.5)	1.633 (41.5)	1.00 (25.4)
47	1.625 (41.3)	1.665 (42.3)	1.00 (25.4)
48	1.656 (42.1)	1.696 (43.1)	1.00 (25.4)
49	1.687 (42.8)	1.727 (43.9)	1.00 (25.4)
50	1.718 (43.6)	1.758 (44.7)	1.00 (25.4)
51	1.750 (44.5)	1.790 (45.5)	1.00 (25.4)
52	1.781 (45.2)	1.821 (46.3)	1.00 (25.4)
53	1.812 (46.0)	1.852 (47.0)	1.00 (25.4)
54	1.843 (46.8)	1.883 (47.8)	1.00 (25.4)

1. Finish : Clear Anodize
2. Consult factory for other available lengths.
3. Metric dimensions (mm) are indicated in parentheses.

X-ON Electronics

Largest Supplier of Electrical and Electronic Components

Click to view similar products for [Circular MIL Spec Tools, Hardware & Accessories](#) *category:*

Click to view products by [Glenair](#) *manufacturer:*

Other Similar products are found below :

[809-199-3](#) [001104](#) [300 04](#) [600-006-16](#) [600-079-06](#) [M10-101982-143](#) [M10-101982-163](#) [M10-101983-183](#) [M10-150912-083](#) [M10-454396-008](#) [602GB18808](#) [M225201-06](#) [M24758-20E21](#) [M2887610-BC](#) [M2887615-CD](#) [M38999/9-19B](#) [62GB-812-10](#) [630A007NF083A](#) [630B007M051A](#) [630BJ003NF032H](#) [637-149NF04B](#) [M39029/29-215](#) [650FS002NF16](#) [M81969-14-02](#) [660-008NF14S7-01](#) [660-009M22H8-03](#) [660-013NF19U6-210](#) [660-015M10S6-17](#) [660-015NF10S5-01](#) [660-015NF14R3.5-01](#) [660-023NF19H6-19](#) [660-024N09S5-104](#) [660-024NF11S12-01](#) [660-024NF11S3-01](#) [660-050XM17F4-01](#) [660-068NF25R6-30G](#) [660-070M23S8-04](#) [660-073MTCH9-20](#) [M83723/60-116RC](#) [M83723/61-18W](#) [M83723/61-218R](#) [M83723/61-224W](#) [667-224NF16](#) [M85049/118S22A](#) [M85049/126S11N](#) [M85049130-07M](#) [M85049140-09BC](#) [M85049/41-16A W/B](#) [687-697NF-1](#) [M85049/75-14-1](#) [M8504980-8](#)