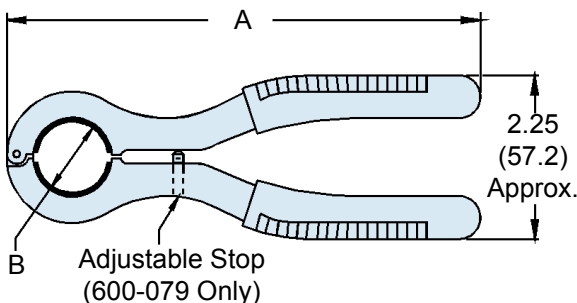
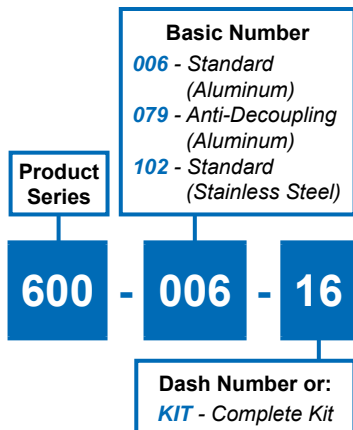


600-006, 600-079 & 600-102 Circular Backshell Assembly Wrenches and Replacement Insert Pads



APPLICATION NOTES

- Grips are covered in vinyl.
- Metric dimensions (mm) are indicated in parentheses.

600-006 and 600-102 (Standard Coupling)

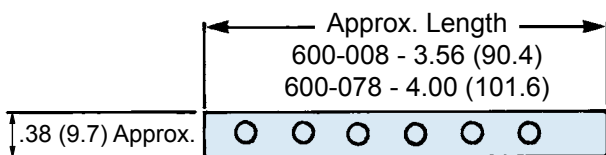
| Dash No. | Shell Size Ref. | A Ref. | B Ref. |
|----------|-----------------|--------------|--------------|
| 08 | 08/09 | 6.50 (165.1) | .617 (15.7) |
| 10 | 10/11 | 6.50 (165.1) | .734 (18.6) |
| 12 | 12/13 | 6.50 (165.1) | .858 (21.8) |
| 14 | 14/15 | 6.50 (165.1) | .984 (25.0) |
| 16 | 16/17 | 6.50 (165.1) | 1.112 (28.2) |
| 18 | 18/19 | 7.00 (177.8) | 1.198 (30.4) |
| 20 | 20/21 | 7.00 (177.8) | 1.323 (33.6) |
| 22 | 22/23 | 7.00 (177.8) | 1.448 (36.8) |
| 24 | 24/25 | 7.00 (177.8) | 1.573 (40.0) |
| 28 | 28 | 7.00 (177.8) | 1.969 (50.0) |

600-079 and 600-103 (Anti-Decoupling)

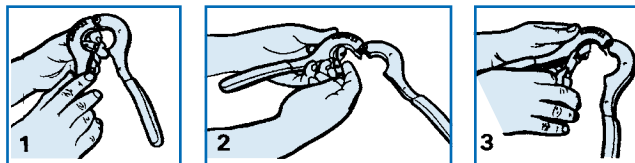
| Dash No. | Shell Size Ref. | A Ref. | B Ref. |
|----------|-----------------|--------------|--------------|
| 01 | 08/09 | 7.38 (187.5) | .659 (16.7) |
| 02 | 10/11 | 7.50 (190.5) | .783 (19.9) |
| 03 | 12/13 | 7.50 (190.5) | .906 (23.0) |
| 04 | 14/15 | 7.50 (190.5) | 1.035 (26.3) |
| 05 | 16/17 | 7.50 (190.5) | 1.140 (29.0) |
| 06 | 18/19 | 7.75 (196.9) | 1.260 (32.0) |
| 07 | 20/21 | 8.00 (203.2) | 1.383 (35.1) |
| 08 | 22/23 | 8.25 (209.6) | 1.510 (38.4) |
| 10 | 24/25 | 8.25 (209.6) | 1.630 (41.4) |

Consult Factory for Larger Sizes

Replacement Insert Pads



- 600-008-01 Fits standard coupling series sizes 08 through 24, color black.
- 600-078-01 Fits anti-decoupling coupling sizes 09 through 23, color red.
- 600-078-02 Fits anti-decoupling coupling size 25, color red.



Replacing Insert Pads in Backshell Assembly Tools

- The urethane pad strips are mechanically retained without adhesive. To remove, grasp an edge of the strip and pull loose from tool.
- Beginning with retaining hole adjacent to assembly tool hinge, insert first retaining knob on strip into hole. Continue inserting knobs on pad strip into remaining holes on tool.
- Using side-cutters or scissors, trim end of pad strip flush with metal surface of assembly tool. Retain remainder of strip for replacement in other size assembly tools.

X-ON Electronics

Largest Supplier of Electrical and Electronic Components

Click to view similar products for [Circular MIL Spec Tools, Hardware & Accessories](#) *category:*

Click to view products by [Glenair](#) *manufacturer:*

Other Similar products are found below :

[0113-201-2025](#) [600-079-06](#) [600-146-06](#) [M10-101982-143](#) [M10-101982-163](#) [M10-101983-183](#) [M10-150912-083](#) [M10-454396-008](#)
[602GB18808](#) [CS3102A-22-14PW](#) [M2887615-CD](#) [627-009](#) [M38999/9-19B](#) [630A007NF083A](#) [630B007M051A](#) [630BJ003NF032H](#) [637-](#)
[149NF04B](#) [M39029/29-215](#) [6408-203V-09273](#) [6426-201-11343](#) [650FS002NF16](#) [660-008NF14S7-01](#) [660-009M22H8-03](#) [660-013NF19U6-](#)
[210](#) [660-015M10S6-17](#) [660-015NF10S5-01](#) [660-015NF14R3.5-01](#) [660-023NF19H6-19](#) [660-024NF11S12-01](#) [660-024NF11S3-01](#) [660-](#)
[024NF17S4-109](#) [660-050XM17F4-01](#) [660-068NF25R6-30G](#) [660-070M23S8-04](#) [660-073MTCH9-20](#) [M83723/61-18W](#) [M83723/61-218R](#)
[M83723/61-224W](#) [667-084-23C](#) [667-084-35C](#) [667-224NF16](#) [687-697NF-1](#) [M85049/94-10-A](#) [M85049/96-7-A](#) [M855282-10A01A](#)
[M85528/2-10B](#) [M855282-18A01A](#) [M85528/2-22A01A](#) [M85528/2-22AA](#) [710HS460NF2508](#)